


Anti-Thrombin antibody ab92621

★★★★☆ **5 Abreviews** **15 References** 画像数 1

製品の概要

製品名	Anti-Thrombin antibody
製品の詳細	Rabbit polyclonal to Thrombin
由来種	Rabbit
アプリケーション	適用あり: WB
種交差性	交差種: Mouse, Rat, Human 交差が予測される動物種: Sheep, Rabbit, Pig, Macaque monkey, Orangutan 
免疫原	Synthetic peptide corresponding to Human Thrombin aa 400-500 conjugated to keyhole limpet haemocyanin. (Peptide available as ab102604)
ポジティブ・コントロール	This antibody gave a positive signal in the following lysates: Human Liver Tissue; Mouse Liver Tissue; Rat Liver Tissue; Human Plasma Total Protein; Mouse Plasma
特記事項	<p>The Life Science industry has been in the grips of a reproducibility crisis for a number of years. Abcam is leading the way in addressing this with our range of recombinant monoclonal antibodies and knockout edited cell lines for gold-standard validation. Please check that this product meets your needs before purchasing.</p> <p>If you have any questions, special requirements or concerns, please send us an inquiry and/or contact our Support team ahead of purchase. Recommended alternatives for this product can be found below, along with publications, customer reviews and Q&As</p>

製品の特性

製品の状態	Liquid
保存方法	Shipped at 4°C. Store at +4°C short term (1-2 weeks). Upon delivery aliquot. Store at -20°C or -80°C. Avoid freeze / thaw cycle.
バッファー	pH: 7.40 Preservative: 0.02% Sodium azide Constituent: PBS
	Batches of this product that have a concentration < 1mg/ml may have BSA added as a stabilising agent. If you would like information about the formulation of a specific lot, please contact our scientific support team who will be happy to help.

精製度	Immunogen affinity purified
ポリ/モノ	ポリクローナル
アイソタイプ	IgG

アプリケーション

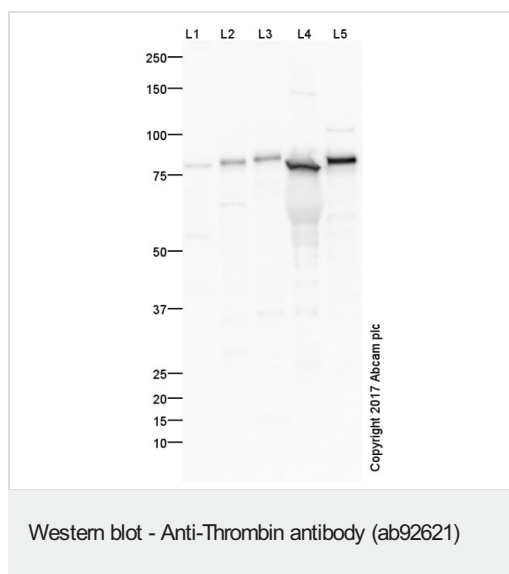
The Abpromise guarantee **Abpromise保証は、**次のテスト済みアプリケーションにおけるab92621の使用に適用されます
 アプリケーションノートには、推奨の開始希釈率がありますが、適切な希釈率につきましてはご検討ください。

アプリケーション	Abreviews	特記事項
WB	★★★★★ (4)	Use a concentration of 1 µg/ml. Detects a band of approximately 78 kDa (predicted molecular weight: 70 kDa).

ターゲット情報

機能	Thrombin, which cleaves bonds after Arg and Lys, converts fibrinogen to fibrin and activates factors V, VII, VIII, XIII, and, in complex with thrombomodulin, protein C. Functions in blood homeostasis, inflammation and wound healing.
組織特異性	Expressed by the liver and secreted in plasma.
関連疾患	Factor II deficiency Ischemic stroke Thrombophilia due to thrombin defect Pregnancy loss, recurrent, 2
配列類似性	Belongs to the peptidase S1 family. Contains 1 Gla (gamma-carboxy-glutamate) domain. Contains 2 kringle domains. Contains 1 peptidase S1 domain.
翻訳後修飾	The gamma-carboxyglutamyl residues, which bind calcium ions, result from the carboxylation of glutamyl residues by a microsomal enzyme, the vitamin K-dependent carboxylase. The modified residues are necessary for the calcium-dependent interaction with a negatively charged phospholipid surface, which is essential for the conversion of prothrombin to thrombin. N-glycosylated. N-glycan heterogeneity at Asn-121: Hex3HexNAc3 (minor), Hex4HexNAc3 (minor) and Hex5HexNAc4 (major). At Asn-143: Hex4HexNAc3 (minor) and Hex5HexNAc4 (major).
細胞内局在	Secreted, extracellular space.

画像



All lanes : Anti-Thrombin antibody (ab92621) at 1 µg/ml

Lane 1 : Liver (Human) Tissue Lysate

Lane 2 : Liver (Mouse) Tissue Lysate

Lane 3 : Liver (Rat) Tissue Lysate

Lane 4 : Plasma (Human) Total Protein Lysate

Lane 5 : Plasma (Mouse) Total Protein Lysate

Lysates/proteins at 10 µg per lane.

Secondary

All lanes : Goat Anti-Rabbit IgG H&L (HRP) at 1/50000 dilution

Developed using the ECL technique.

Performed under reducing conditions.

Predicted band size: 70 kDa

Observed band size: 78 kDa

Additional bands at: 100 kDa, 60 kDa. We are unsure as to the identity of these extra bands.

Exposure time: 5 seconds

This blot was produced using a 4-12% Bis-tris gel under the MOPS buffer system. The gel was run at 200V for 50 minutes before being transferred onto a Nitrocellulose membrane at 30V for 70 minutes. The membrane was then blocked for an hour using 2% Bovine Serum Albumin before being incubated with ab92621 overnight at 4°C. Antibody binding was detected using an anti-rabbit antibody conjugated to HRP, and visualised using ECL development solution **ab133406**.

Please note: All products are "FOR RESEARCH USE ONLY. NOT FOR USE IN DIAGNOSTIC PROCEDURES"

Our Abpromise to you: Quality guaranteed and expert technical support

- Replacement or refund for products not performing as stated on the datasheet
- Valid for 12 months from date of delivery
- Response to your inquiry within 24 hours

- We provide support in Chinese, English, French, German, Japanese and Spanish
- Extensive multi-media technical resources to help you
- We investigate all quality concerns to ensure our products perform to the highest standards

If the product does not perform as described on this datasheet, we will offer a refund or replacement. For full details of the Abpromise, please visit <https://www.abcam.co.jp/abpromise> or contact our technical team.

Terms and conditions

- Guarantee only valid for products bought direct from Abcam or one of our authorized distributors