

### Anti-THEA antibody [EPR18792] ab180745

リコンビナント RabMAb

★★★★★ **1 Abreviews** 画像数 5

#### 製品の概要

製品名	Anti-THEA antibody [EPR18792]
製品の詳細	Rabbit monoclonal [EPR18792] to THEA
由来種	Rabbit
アプリケーション	<b>適用あり:</b> WB
種交差性	<b>交差種:</b> Mouse, Human
免疫原	Recombinant fragment. This information is proprietary to Abcam and/or its suppliers.
ポジティブ・コントロール	WB: Human fetal liver, heart and kidney tissue lysates; Mouse brown adipose, kidney, heart and spleen tissue lysates; NIH/3T3, Jurkat, LNCaP and HepG2 whole cell lysates.
特記事項	<p>This product is a recombinant monoclonal antibody, which offers several advantages including:</p> <ul style="list-style-type: none"><li>- High batch-to-batch consistency and reproducibility</li><li>- Improved sensitivity and specificity</li><li>- Long-term security of supply</li><li>- Animal-free production</li></ul> <p>For more information <a href="#">see here</a>.</p> <p>Our RabMAb<sup>®</sup> technology is a patented hybridoma-based technology for making rabbit monoclonal antibodies. For details on our patents, please refer to <a href="#">RabMAb<sup>®</sup> patents</a>.</p>

#### 製品の特性

製品の状態	Liquid
保存方法	Shipped at 4°C. Store at +4°C short term (1-2 weeks). Upon delivery aliquot. Store at -20°C long term. Avoid freeze / thaw cycle.
バッファー	Preservative: 0.01% Sodium azide Constituents: 0.05% BSA, 40% Glycerol (glycerin, glycerine), PBS
精製度	Protein A purified
ポリ/モノ	モノクローナル
クローン名	EPR18792
アイソタイプ	IgG

## アプリケーション

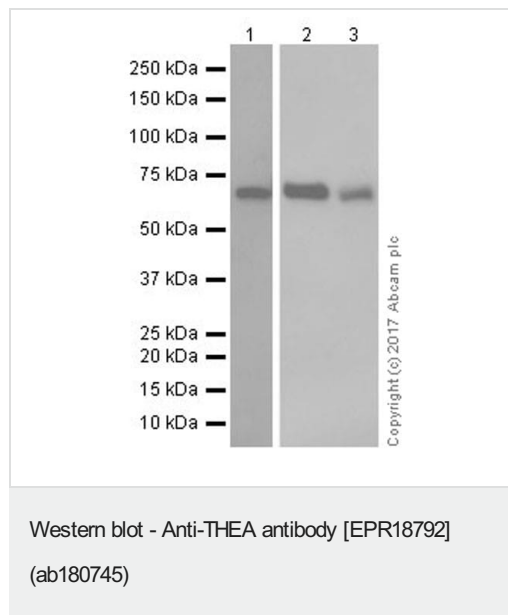
**The Abpromise guarantee** Abpromise保証は、次のテスト済みアプリケーションにおけるab180745の使用に適用されます  
アプリケーションノートには、推奨の開始希釈率がありますが、適切な希釈率につきましてはご検討ください。

アプリケーション	Abreviews	特記事項
WB		1/1000. Detects a band of approximately 68 kDa (predicted molecular weight: 68 kDa).

## ターゲット情報

機能	Has acyl-CoA thioesterase activity towards medium (C12) and long-chain (C18) fatty acyl-CoA substrates.
組織特異性	Isoform 1 is predominantly expressed in skeletal muscle, liver, testis, stomach, spleen, lung and brain. Isoform 2 is predominantly expressed in kidney, uterus, hibernoma and white adipose tissue.
配列類似性	Contains 2 acyl coenzyme A hydrolase domains. Contains 1 START domain.
細胞内局在	Cytoplasm.

## 画像



**All lanes** : Anti-THEA antibody [EPR18792] (ab180745) at 1/1000 dilution

**Lane 1** : Human fetal liver tissue lysate

**Lane 2** : Human fetal heart tissue lysate

**Lane 3** : Human fetal kidney tissue lysate

Lysates/proteins at 10 µg per lane.

### Secondary

**All lanes** : VeriBlot for IP Detection Reagent (HRP) ([ab131366](#)) at 1/10000 dilution

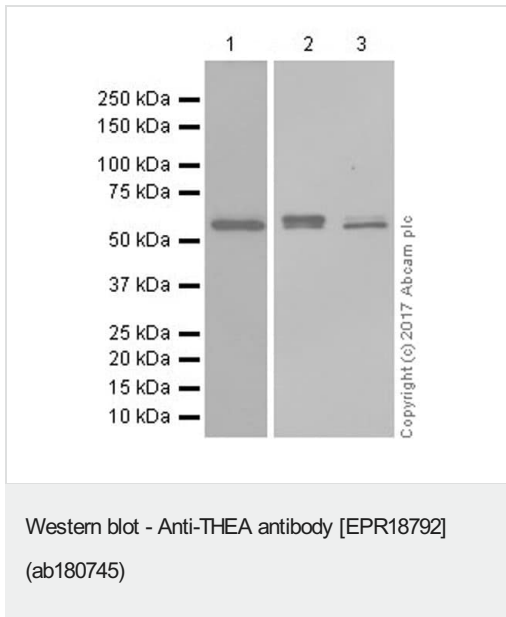
Developed using the ECL technique.

**Predicted band size:** 68 kDa

**Observed band size:** 68 kDa

Blocking/Dilution buffer: 5% NFDm/TBST.

Exposure time: Lane 1: 3 minutes; Lane 2/3: 15 seconds.



**All lanes** : Anti-THEA antibody [EPR18792] (ab180745) at 1/2000 dilution

**Lane 1** : Jurkat (human T cell leukemia cell line from peripheral blood) whole cell lysate

**Lane 2** : LNCaP (human prostate cancer cell line) whole cell lysate

**Lane 3** : HepG2 (human liver hepatocellular carcinoma cell line) whole cell lysate

Lysates/proteins at 20 µg per lane.

### Secondary

**All lanes** : Goat Anti-Rabbit IgG H&L (HRP) ([ab97051](#)) at 1/100000 dilution

Developed using the ECL technique.

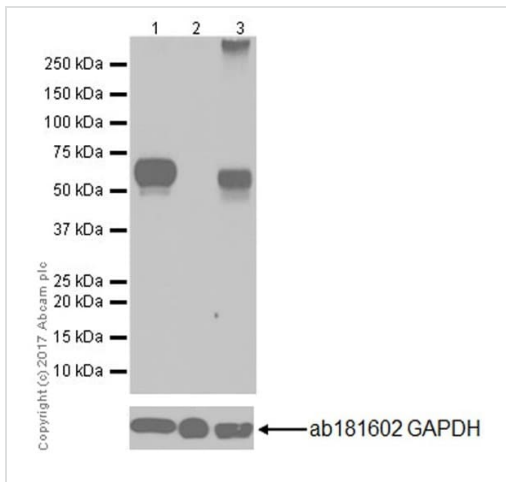
**Predicted band size:** 68 kDa

**Observed band size:** 67,68 kDa

Blocking/Dilution buffer: 5% NFDm/TBST.

Exposure time: Lane 1: 3 minutes; Lane 2/3: 15 seconds.

This antibody can recognize 2 isoforms in human, the predicted MW is 68 & 67 KDa.



Western blot - Anti-THEA antibody [EPR18792] (ab180745)

**All lanes** : Anti-THEA antibody [EPR18792] (ab180745) at 1/1000 dilution

**Lane 1** : Mouse brown adipose lysate

**Lane 2** : Mouse liver lysate

**Lane 3** : Mouse kidney lysate

Lysates/proteins at 20 µg per lane.

**Secondary**

**All lanes** : Goat Anti-Rabbit IgG H&L (HRP) (**ab97051**) at 1/100000 dilution

Developed using the ECL technique.

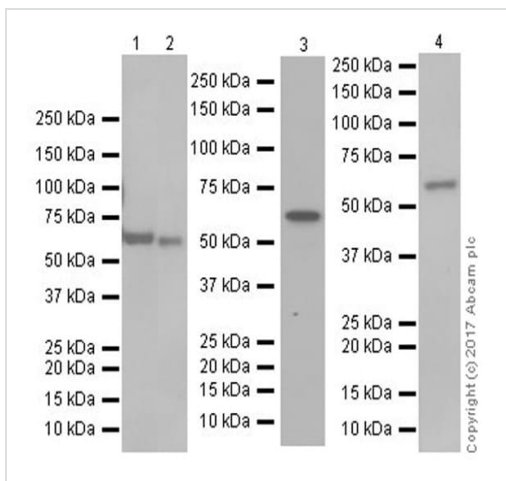
**Predicted band size:** 68 kDa

**Observed band size:** 68 kDa

Blocking/Dilution buffer: 5% NFDm/TBST.

Exposure time: 3 minutes.

The expression profile observed is consistent with what has been described in the literature (PMID: 22427358 and PMID:11696000).



Western blot - Anti-THEA antibody [EPR18792] (ab180745)

**All lanes** : Anti-THEA antibody [EPR18792] (ab180745) at 1/1000 dilution

**Lane 1** : Mouse heart lysate

**Lane 2** : Mouse spleen lysate

**Lane 3** : Mouse kidney lysate

**Lane 4** : NIH/3T3 (mouse embryonic fibroblast cell line) whole cell lysate

Lysates/proteins at 10 µg per lane.

**Secondary**

**All lanes** : Goat Anti-Rabbit IgG H&L (HRP) (**ab97051**) at 1/100000 dilution

Developed using the ECL technique.

**Predicted band size:** 68 kDa

**Observed band size:** 68 kDa

Blocking/Dilution buffer: 5% NFDm/TBST.

Exposure time: Lane 1/2: 1 minute; Lane 3: 10 seconds; Lane 4: 15 seconds.

Why choose a recombinant antibody?



**Research with confidence**  
Consistent and reproducible results

**Long-term and scalable supply**  
Recombinant technology

**Success from the first experiment**  
Confirmed specificity

**Ethical standards compliant**  
Animal-free production

Anti-THEA antibody [EPR18792] (ab180745)

**Please note:** All products are "FOR RESEARCH USE ONLY. NOT FOR USE IN DIAGNOSTIC PROCEDURES"

### Our Abpromise to you: Quality guaranteed and expert technical support

---

- Replacement or refund for products not performing as stated on the datasheet
- Valid for 12 months from date of delivery
- Response to your inquiry within 24 hours
- We provide support in Chinese, English, French, German, Japanese and Spanish
- Extensive multi-media technical resources to help you
- We investigate all quality concerns to ensure our products perform to the highest standards

If the product does not perform as described on this datasheet, we will offer a refund or replacement. For full details of the Abpromise, please visit <https://www.abcam.co.jp/abpromise> or contact our technical team.

### Terms and conditions

---

- Guarantee only valid for products bought direct from Abcam or one of our authorized distributors