


# Anti-TGFBI antibody ab99562

画像数 3

### 製品の概要

---

製品名	Anti-TGFBI antibody
製品の詳細	Goat polyclonal to TGFBI
由来種	Goat
アプリケーション	<b>適用あり:</b> IHC-P, WB, ICC/IF
種交差性	<b>交差種:</b> Human <b>交差が予測される動物種:</b> Mouse, Rat, Rabbit, Cow, Dog, Pig 
免疫原	Synthetic peptide corresponding to Human TGFBI aa 119-131 (internal sequence). Sequence: C-QLYTDRTTEKLRPE  Database link: <a href="#">NP_000349.1</a>

 [Run BLAST with](#)

 [Run BLAST with](#)

**ポジティブ・コントロール** WB: Human kidney tissue lysate. IHC-P: Human kidney tissue. ICC/IF: HeLa cells.

**特記事項** The Life Science industry has been in the grips of a reproducibility crisis for a number of years. Abcam is leading the way in addressing this with our range of recombinant monoclonal antibodies and knockout edited cell lines for gold-standard validation. Please check that this product meets your needs before purchasing.

If you have any questions, special requirements or concerns, please send us an inquiry and/or contact our Support team ahead of purchase. Recommended alternatives for this product can be found below, along with publications, customer reviews and Q&As

### 製品の特性

---

製品の状態	Liquid
保存方法	Shipped at 4°C. Upon delivery aliquot and store at -20°C. Avoid freeze / thaw cycles.
バッファー	pH: 7.30 Preservative: 0.02% Sodium azide Constituents: 0.5% BSA, Tris buffered saline
精製度	Immunogen affinity purified
特記事項 (精製)	Purified from goat serum by ammonium sulphate precipitation followed by antigen affinity chromatography using the immunizing peptide.

ポリモノ  
アイソタイプ

ポリクローナル  
IgG

## アプリケーション

**The Abpromise guarantee** Abpromise保証は、次のテスト済みアプリケーションにおけるab99562の使用に適用されます  
アプリケーションノートには、推奨の開始希釈率がありますが、適切な希釈率につきましてはご確認ください。

アプリケーション	Abreviews	特記事項
IHC-P		Use a concentration of 4 - 6 µg/ml. Perform heat mediated antigen retrieval with citrate buffer pH 6 before commencing with IHC staining protocol.
WB		Use a concentration of 0.1 - 0.3 µg/ml. Detects a band of approximately 70 kDa (predicted molecular weight: 75 kDa). A 1 hour primary incubation is recommended for this product.
ICC/IF		Use a concentration of 10 µg/ml.

## ターゲット情報

機能	Binds to type I, II, and IV collagens. This adhesion protein may play an important role in cell-collagen interactions. In cartilage, may be involved in endochondral bone formation.
組織特異性	Highly expressed in the corneal epithelium.
関連疾患	<p>Defects in TGFBI are the cause of epithelial basement membrane corneal dystrophy (EBMD) [MIM:121820]; also known as Cogan corneal dystrophy or map-dot-fingerprint type corneal dystrophy. EBMD is a bilateral anterior corneal dystrophy characterized by grayish epithelial fingerprint lines, geographic map-like lines, and dots (or microcysts) on slit-lamp examination. Pathologic studies show abnormal, redundant basement membrane and intraepithelial lacunae filled with cellular debris. Although this disorder usually is not considered to be inherited, families with autosomal dominant inheritance have been identified.</p> <p>Defects in TGFBI are the cause of corneal dystrophy Groenouw type 1 (CDGG1) [MIM:121900]; also known as corneal dystrophy granular type. Inheritance is autosomal dominant. Corneal dystrophies show progressive opacification of the cornea leading to severe visual handicap.</p> <p>Defects in TGFBI are the cause of corneal dystrophy lattice type 1 (CDL1) [MIM:122200]. Inheritance is autosomal dominant.</p> <p>Defects in TGFBI are a cause of corneal dystrophy Thiel-Behnke type (CDTB) [MIM:602082]; also known as corneal dystrophy of Bowman layer type 2 (CDB2).</p> <p>Defects in TGFBI are the cause of Reis-Buecklers corneal dystrophy (CDRB) [MIM:608470]; also known as corneal dystrophy of Bowman layer type 1 (CDB1).</p> <p>Defects in TGFBI are the cause of lattice corneal dystrophy type 3A (CDL3A) [MIM:608471]. CDL3A clinically resembles to lattice corneal dystrophy type 3, but differs in that its age of onset is 70 to 90 years. It has an autosomal dominant inheritance pattern.</p> <p>Defects in TGFBI are the cause of Avellino corneal dystrophy (ACD) [MIM:607541]. ACD could be considered a variant of granular dystrophy with a significant amyloidogenic tendency. Inheritance is autosomal dominant.</p>
配列類似性	Contains 1 EMI domain.

Contains 4 FAS1 domains.

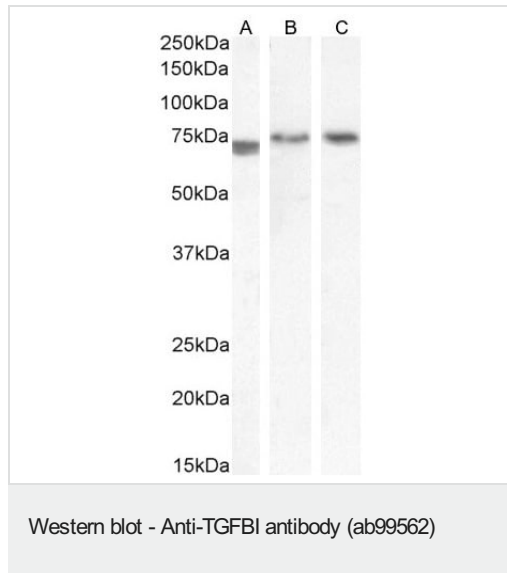
## 翻訳後修飾

Gamma-carboxyglutamate residues are formed by vitamin K dependent carboxylation. These residues are essential for the binding of calcium.

## 細胞内局在

Secreted > extracellular space > extracellular matrix. May be associated both with microfibrils and with the cell surface.

## 画像



**Lanes 1-2 :** Anti-TGFBI antibody (ab99562) at 0.3  $\mu\text{g/ml}$

**Lane 3 :** Anti-TGFBI antibody (ab99562) at 0.1  $\text{mg/ml}$

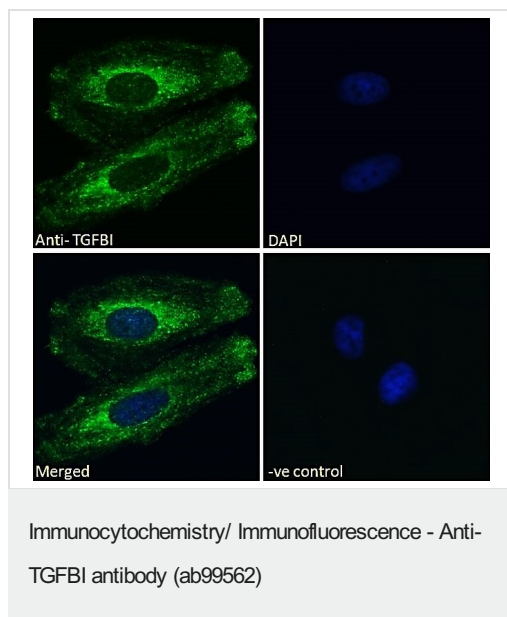
**Lane 1 :** Human Kidney in RIPA buffer

**Lane 2 :** Colorectal cancer in RIPA buffer

**Lane 3 :** Human Prostate in RIPA buffer

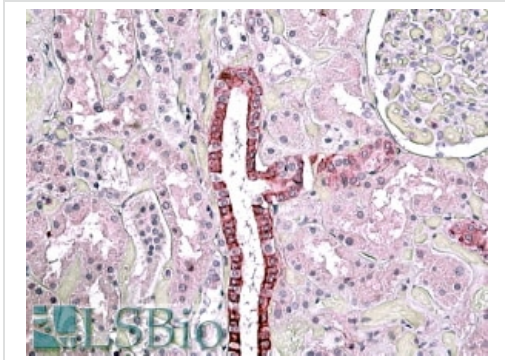
Lysates/proteins at 35  $\mu\text{g}$  per lane.

**Predicted band size:** 75 kDa



Immunocytochemistry/Immunofluorescence analysis of paraformaldehyde fixed HeLa cells, permeabilized with 0.15% Triton. Incubated with the primary antibody (ab99562) for 1hr at 10 $\mu\text{g/ml}$  followed by Alexa Fluor<sup>®</sup> 488 secondary antibody at 2 $\mu\text{g/ml}$ . Shows golgi and membrane staining. The nuclear stain is DAPI (blue).

Negative control: Unimmunized goat IgG (10 $\mu\text{g/ml}$ ) followed by Alexa Fluor<sup>®</sup> 488 secondary antibody (2 $\mu\text{g/ml}$ ).



ab99562 at 3.8µg/ml staining of paraffin embedded Human Kidney.  
Steamed antigen retrieval with citrate buffer pH 6, AP-staining.

Immunohistochemistry (Formalin/PFA-fixed paraffin-embedded sections) - Anti-TGFBI antibody (ab99562)

**Please note:** All products are "FOR RESEARCH USE ONLY. NOT FOR USE IN DIAGNOSTIC PROCEDURES"

### Our Abpromise to you: Quality guaranteed and expert technical support

---

- Replacement or refund for products not performing as stated on the datasheet
- Valid for 12 months from date of delivery
- Response to your inquiry within 24 hours
- We provide support in Chinese, English, French, German, Japanese and Spanish
- Extensive multi-media technical resources to help you
- We investigate all quality concerns to ensure our products perform to the highest standards

If the product does not perform as described on this datasheet, we will offer a refund or replacement. For full details of the Abpromise, please visit <https://www.abcam.co.jp/abpromise> or contact our technical team.

### Terms and conditions

---

- Guarantee only valid for products bought direct from Abcam or one of our authorized distributors