

Anti-TGF beta 3 antibody ab15537

★★★★★ **5 Abreviews** **46 References** 画像数 3

製品の概要

製品名	Anti-TGF beta 3 antibody
製品の詳細	Rabbit polyclonal to TGF beta 3
由来種	Rabbit
特異性	From Jan 2024, QC testing of replenishment batches of this polyclonal changed. All tested and expected application and reactive species combinations are still covered by our Abcam product promise. However, we no longer test all applications. For more information on a specific batch, please contact our Scientific Support who will be happy to help.
アプリケーション	適用あり: IP, WB, ICC/IF, IHC-P
種交差性	交差種: Mouse, Rat, Rabbit, Human
免疫原	Synthetic peptide. This information is proprietary to Abcam and/or its suppliers.
特記事項	<p>This product is FOR RESEARCH USE ONLY. For commercial use, please contact partnerships@abcam.com.</p> <p>The Life Science industry has been in the grips of a reproducibility crisis for a number of years. Abcam is leading the way in addressing this with our range of recombinant monoclonal antibodies and knockout edited cell lines for gold-standard validation. Please check that this product meets your needs before purchasing.</p> <p>If you have any questions, special requirements or concerns, please send us an inquiry and/or contact our Support team ahead of purchase. Recommended alternatives for this product can be found below, along with publications, customer reviews and Q&As</p>

製品の特性

製品の状態	Liquid
保存方法	Shipped at 4°C. Upon delivery aliquot and store at -20°C. Avoid freeze / thaw cycles.
バッファー	<p>pH: 7.60</p> <p>Preservative: 0.1% Sodium azide</p> <p>Constituents: PBS, 1% BSA</p>
精製度	Immunogen affinity purified
ポリ/モノ	ポリクローナル
アイソタイプ	IgG

アプリケーション

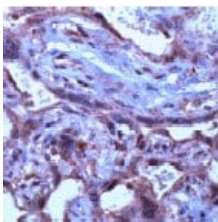
The Abpromise guarantee Abpromise保証は、次のテスト済みアプリケーションにおけるab15537の使用に適用されます
アプリケーションノートには、推奨の開始希釈率がありますが、適切な希釈率につきましてはご検討ください。

アプリケーション	Abreviews	特記事項
IP	★★★★★ (1)	Use at an assay dependent concentration.
WB	★★★★★ (2)	Use at an assay dependent concentration. Predicted molecular weight: 47 kDa. The immunogen for ab15537 is located close to C-terminus and therefore should be able to detect the proform at 50 kDa and mature form at 12.5 kDa under reducing condition.
ICC/IF		Use a concentration of 5 µg/ml.
IHC-P	★★★★★ (2)	1/100. Incubate for 10 minutes at RT. Staining of formalin-fixed tissues requires boiling tissue sections in 10mM citrate buffer, pH 6.0 for 10 minutes followed by cooling at RT for 20 minutes. Ab15537 demonstrates cytoplasmic staining.

ターゲット情報

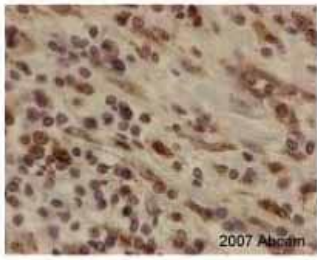
機能	Involved in embryogenesis and cell differentiation.
関連疾患	Defects in TGFB3 are a cause of familial arrhythmogenic right ventricular dysplasia type 1 (ARVD1) [MIM:107970]; also known as arrhythmogenic right ventricular cardiomyopathy 1 (ARVC1). ARVD is an autosomal dominant disease characterized by partial degeneration of the myocardium of the right ventricle, electrical instability, and sudden death. It is clinically defined by electrocardiographic and angiographic criteria; pathologic findings, replacement of ventricular myocardium with fatty and fibrous elements, preferentially involve the right ventricular free wall.
配列類似性	Belongs to the TGF-beta family.
細胞内局在	Secreted.

画像



Human placenta stained with ab15537 by Immunohistochemistry (FFPE-sections).

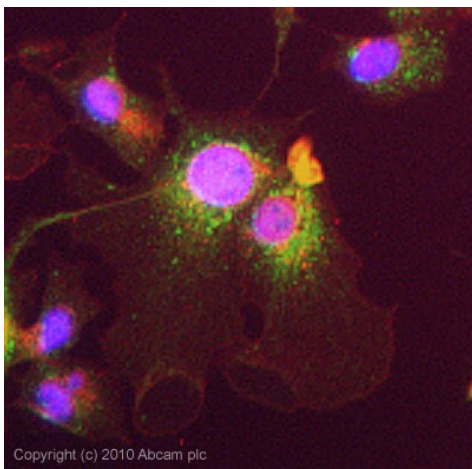
Immunohistochemistry (Formalin/PFA-fixed paraffin-embedded sections) - Anti-TGF beta 3 antibody (ab15537)



Immunohistochemistry (Formalin/PFA-fixed paraffin-embedded sections) - Anti-TGF beta 3 antibody (ab15537)

This image is courtesy of an anonymous Abreview

ab15537 at 1/200 staining human anal cancer tissue sections by IHC-P. The tissue was formaldehyde fixed and a heat mediated antigen retrieval step in citrate buffer was performed before incubation with the antibody for 30 minutes. An HRP conjugated goat anti-rabbit antibody was used as the secondary.



Immunocytochemistry/ Immunofluorescence - Anti-TGF beta 3 antibody (ab15537)

ICC/IF image of ab15537 stained HepG2 cells. The cells were 4% formaldehyde fixed (10 min) and then incubated in 1%BSA / 10% normal goat serum / 0.3M glycine in 0.1% PBS-Tween for 1h to permeabilise the cells and block non-specific protein-protein interactions. The cells were then incubated with the antibody ab15537 5µg/ml overnight at +4°C. The secondary antibody (green) was Alexa Fluor® 488 goat anti- rabbit IgG (H+L) used at a 1/1000 dilution for 1h. Alexa Fluor® 594 WGA was used to label plasma membranes (red) at a 1/200 dilution for 1h. DAPI was used to stain the cell nuclei (blue) at a concentration of 1.43µM.

Please note: All products are "FOR RESEARCH USE ONLY. NOT FOR USE IN DIAGNOSTIC PROCEDURES"

Our Abpromise to you: Quality guaranteed and expert technical support

- Replacement or refund for products not performing as stated on the datasheet
- Valid for 12 months from date of delivery
- Response to your inquiry within 24 hours
- We provide support in Chinese, English, French, German, Japanese and Spanish
- Extensive multi-media technical resources to help you
- We investigate all quality concerns to ensure our products perform to the highest standards

If the product does not perform as described on this datasheet, we will offer a refund or replacement. For full details of the Abpromise, please visit <https://www.abcam.co.jp/abpromise> or contact our technical team.

Terms and conditions

- Guarantee only valid for products bought direct from Abcam or one of our authorized distributors