


# Anti-TGF beta 2 antibody ab167655

**3 References** [画像数 1](#)

### 製品の概要

製品名	Anti-TGF beta 2 antibody
製品の詳細	Mouse polyclonal to TGF beta 2
由来種	Mouse
アプリケーション	<b>適用あり:</b> WB
種交差性	<b>交差種:</b> Human <b>交差が予測される動物種:</b> Rabbit, Horse, Cow, Dog, Chimpanzee, Rhesus monkey 
免疫原	Recombinant full length protein, corresponding to amino acids 1-414 of Human TGF beta 2 (AAH99635.1). <a href="#">Run BLAST with Expasy</a> <a href="#">Run BLAST with NCBI</a>
ポジティブ・コントロール	TGF beta 2 transfected 293T cell lysate
特記事項	<p>The Life Science industry has been in the grips of a reproducibility crisis for a number of years. Abcam is leading the way in addressing this with our range of recombinant monoclonal antibodies and knockout edited cell lines for gold-standard validation. Please check that this product meets your needs before purchasing.</p> <p>If you have any questions, special requirements or concerns, please send us an inquiry and/or contact our Support team ahead of purchase. Recommended alternatives for this product can be found below, along with publications, customer reviews and Q&amp;As</p>

### 製品の特性

製品の状態	Liquid
保存方法	Shipped at 4°C. Store at +4°C short term (1-2 weeks). Upon delivery aliquot. Store at -20°C long term.
バッファー	pH: 7.4 Constituent: 100% PBS
精製度	Protein A purified
ポリ/モノ	ポリクローナル
アイソタイプ	IgG

### アプリケーション

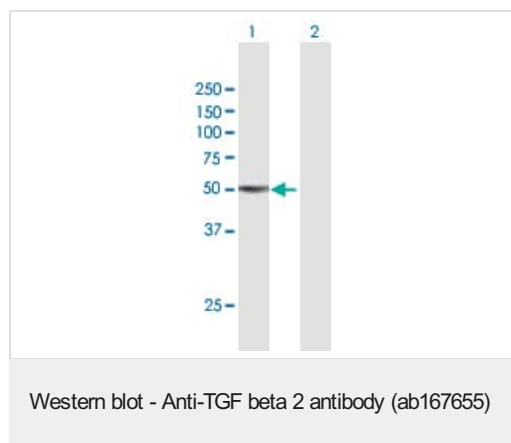
**The Abpromise guarantee** **Abpromise保証は、次のテスト済みアプリケーションにおけるab167655の使用に適用されます**  
 アプリケーションノートには、推奨の開始希釈率がありますが、適切な希釈率につきましてはご検討ください。

アプリケーション	Abreviews	特記事項
WB		Use a concentration of 1 µg/ml. Predicted molecular weight: 48 kDa.

## ターゲット情報

<b>機能</b>	TGF-beta 2 has suppressive effects on interleukin-2 dependent T-cell growth.
<b>関連疾患</b>	A chromosomal aberration involving TGFB2 is found in a family with Peters anomaly. Translocation t(1;7)(q41;p21) with HDAC9. Loey-Dietz syndrome 4 Defects in TGFB2 may be a cause of non-syndromic aortic disease (NSAD). NSAD is a frequently asymptomatic but potentially lethal disease characterized by thoracic aortic aneurysms and dissections without additional syndromic features.
<b>配列類似性</b>	Belongs to the TGF-beta family.
<b>翻訳後修飾</b>	The precursor is cleaved into mature TGF-beta-2 and LAP, which remains non-covalently linked to mature TGF-beta-2 rendering it inactive.
<b>細胞内局在</b>	Secreted.

## 画像



**All lanes :** Anti-TGF beta 2 antibody (ab167655) at 1 µg/ml

**Lane 1 :** TGF beta 2 transfected 293T cell lysate

**Lane 2 :** Non-transfected 293T cell lysate

Lysates/proteins at 15 µl per lane.

### Secondary

**All lanes :** Goat Anti-Mouse IgG HRP at 1/2500 dilution

**Predicted band size:** 48 kDa

**Please note:** All products are "FOR RESEARCH USE ONLY. NOT FOR USE IN DIAGNOSTIC PROCEDURES"

## Our Abpromise to you: Quality guaranteed and expert technical support

- Replacement or refund for products not performing as stated on the datasheet

- Valid for 12 months from date of delivery
- Response to your inquiry within 24 hours
  
- We provide support in Chinese, English, French, German, Japanese and Spanish
- Extensive multi-media technical resources to help you
- We investigate all quality concerns to ensure our products perform to the highest standards

If the product does not perform as described on this datasheet, we will offer a refund or replacement. For full details of the Abpromise, please visit <https://www.abcam.co.jp/abpromise> or contact our technical team.

### **Terms and conditions**

---

- Guarantee only valid for products bought direct from Abcam or one of our authorized distributors