

Anti-TCP1 delta antibody [EPR8494(B)] ab129112

リコンビナント RabMAb®

1 References [画像数 2](#)

製品の概要

製品名	Anti-TCP1 delta antibody [EPR8494(B)]
製品の詳細	Rabbit monoclonal [EPR8494(B)] to TCP1 delta
由来種	Rabbit
アプリケーション	適用あり: WB 適用なし: Flow Cyt, ICC/IF, IHC-P or IP
種交差性	交差種: Rat, Human
免疫原	Synthetic peptide within Human TCP1 delta aa 1-100 (N terminal). The exact sequence is proprietary.
ポジティブ・コントロール	C6, HeLa, HepG2, Jurkat, PC12 and Ramos cell lysates.
特記事項	<p>This product is a recombinant monoclonal antibody, which offers several advantages including:</p> <ul style="list-style-type: none">- High batch-to-batch consistency and reproducibility- Improved sensitivity and specificity- Long-term security of supply- Animal-free production <p>For more information see here.</p> <p>Our RabMAb® technology is a patented hybridoma-based technology for making rabbit monoclonal antibodies. For details on our patents, please refer to RabMAb® patents.</p> <p>Mouse: We have preliminary internal testing data to indicate this antibody may not react with this species. Please contact us for more information.</p>

製品の特性

製品の状態	Liquid
保存方法	Shipped at 4°C. Store at -20°C. Stable for 12 months at -20°C.
バッファー	pH: 7.20 Preservative: 0.01% Sodium azide Constituents: 9% PBS, 40% Glycerol (glycerin, glycerine), 0.05% BSA, 50% Tissue culture supernatant
精製度	Protein A purified

ポリ/モノ モノクローナル
 クローン名 EPR8494(B)
 アイソタイプ IgG

アプリケーション

The Abpromise guarantee **Abpromise保証は、次のテスト済みアプリケーションにおけるab129112の使用に適用されます**
 アプリケーションノートには、推奨の開始希釈率がありますが、適切な希釈率につきましてはご検討ください。

アプリケーション	Abreviews	特記事項
WB		1/1000 - 1/10000. Detects a band of approximately 58 kDa (predicted molecular weight: 58 kDa).

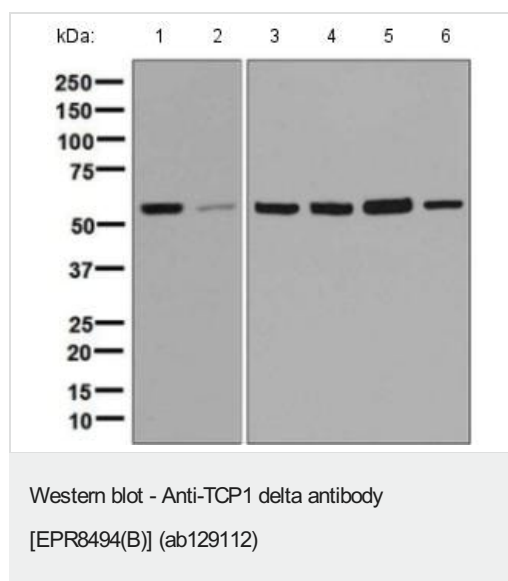
追加情報 Is unsuitable for Flow Cyt, ICC/IF, IHC-P or IP.

ターゲット情報

関連性 The chaperonin containing TCP1 complex (CCT), also called the TCP1 ring complex, consists of 2 back to back rings, each containing 8 unique but homologous subunits (e.g. CCT3). CCT assists the folding of newly translated polypeptide substrates through multiple rounds of ATP driven release and rebinding of partially folded intermediate forms. Substrates of CCT include the cytoskeletal proteins actin and tubulin, as well as alpha transducin. TCP1 delta belongs to the TCP1 chaperonin family, and is a molecular chaperone; assisting the folding of proteins upon ATP hydrolysis. It is known to play a role, in vitro, in the folding of actin and tubulin.

細胞内局在 Cytoplasmic > Cytoskeleton

画像



All lanes : Anti-TCP1 delta antibody [EPR8494(B)] (ab129112) at 1/1000 dilution

- Lane 1** : C6 cell lysate
- Lane 2** : PC12 cell lysate
- Lane 3** : HeLa cell lysate
- Lane 4** : Ramos cell lysate
- Lane 5** : Jurkat cell lysate
- Lane 6** : HepG2 cell lysate


Lysates/proteins at 10 µg per lane.

Secondary

All lanes : Standard HRP labelled goat anti-rabbit at 1/2000 dilution

Predicted band size: 58 kDa

Why choose a recombinant antibody?



Research with confidence
Consistent and reproducible results

Long-term and scalable supply
Recombinant technology

Success from the first experiment
Confirmed specificity

Ethical standards compliant
Animal-free production

Anti-TCP1 delta antibody [EPR8494(B)] (ab129112)

Please note: All products are "FOR RESEARCH USE ONLY. NOT FOR USE IN DIAGNOSTIC PROCEDURES"

Our Abpromise to you: Quality guaranteed and expert technical support

- Replacement or refund for products not performing as stated on the datasheet
- Valid for 12 months from date of delivery
- Response to your inquiry within 24 hours
- We provide support in Chinese, English, French, German, Japanese and Spanish
- Extensive multi-media technical resources to help you
- We investigate all quality concerns to ensure our products perform to the highest standards

If the product does not perform as described on this datasheet, we will offer a refund or replacement. For full details of the Abpromise, please visit <https://www.abcam.co.jp/abpromise> or contact our technical team.

Terms and conditions

- Guarantee only valid for products bought direct from Abcam or one of our authorized distributors