


Anti-TCF3 / E2A antibody ab69999

★★★★☆ **2 Abreviews** **5 References** 画像数 2

製品の概要

製品名	Anti-TCF3 / E2A antibody
製品の詳細	Rabbit polyclonal to TCF3 / E2A
由来種	Rabbit
特異性	Detects endogenous levels of total TCF3/E2A protein.
アプリケーション	適用あり: WB, IHC-P
種交差性	交差種: Human 交差が予測される動物種: Rat 
免疫原	Synthesized peptide derived from the C terminus of human TCF3/E2A
特記事項	<p>The Life Science industry has been in the grips of a reproducibility crisis for a number of years. Abcam is leading the way in addressing this with our range of recombinant monoclonal antibodies and knockout edited cell lines for gold-standard validation. Please check that this product meets your needs before purchasing.</p> <p>If you have any questions, special requirements or concerns, please send us an inquiry and/or contact our Support team ahead of purchase. Recommended alternatives for this product can be found below, along with publications, customer reviews and Q&As</p>

製品の特性

製品の状態	Liquid
保存方法	Shipped at 4°C. Upon delivery aliquot and store at -20°C. Avoid freeze / thaw cycles.
バッファー	pH: 7.40 Preservative: 0.02% Sodium azide Constituents: 50% Glycerol (glycerin, glycerine), 0.87% Sodium chloride, PBS
精製度	Immunogen affinity purified
特記事項 (精製)	Affinity purified from rabbit antiserum by affinity chromatography, using epitope specific immunogen.
ポリ/モノ	ポリクローナル
アイソタイプ	IgG

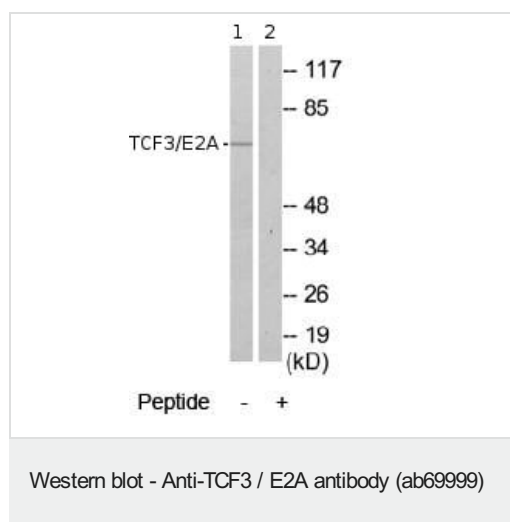
The Abpromise guarantee **Abpromise保証は、** 次のテスト済みアプリケーションにおけるab69999の使用に適用されます
アプリケーションノートには、推奨の開始希釈率がありますが、適切な希釈率につきましてはご検討ください。

アプリケーション	Abreviews	特記事項
WB		1/500 - 1/1000. Detects a band of approximately 68 kDa (predicted molecular weight: 68 kDa).
IHC-P		1/50 - 1/100.

ターゲット情報

機能	Heterodimers between TCF3 and tissue-specific basic helix-loop-helix (bHLH) proteins play major roles in determining tissue-specific cell fate during embryogenesis, like muscle or early B-cell differentiation. Dimers bind DNA on E-box motifs: 5'-CANNTG-3'. Binds to the kappa-E2 site in the kappa immunoglobulin gene enhancer.
関連疾患	Note=Chromosomal aberrations involving TCF3 are cause of forms of pre-B-cell acute lymphoblastic leukemia (B-ALL). Translocation t(1;19)(q23;p13.3) with PBX1; Translocation t(17;19)(q22;p13.3) with HLF. Inversion inv(19)(p13;q13) with TFPT.
配列類似性	Contains 1 basic helix-loop-helix (bHLH) domain.
ドメイン	the 9aaTAD motif is a transactivation domain present in a large number of yeast and animal transcription factors.
翻訳後修飾	Phosphorylated following NGF stimulation.
細胞内局在	Nucleus.

画像



All lanes : Anti-TCF3 / E2A antibody (ab69999) at 1/500 dilution

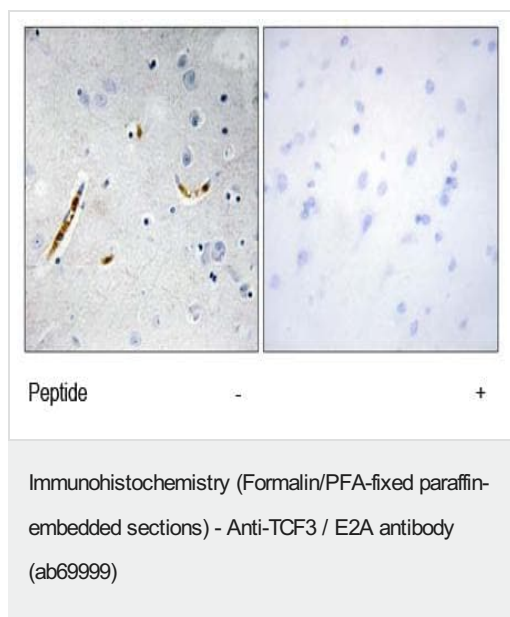
Lane 1 : Extracts from 293 cells, minus immunising peptide

Lane 2 : Extracts from 293 cells, plus immunising peptide 5µg

Lysates/proteins at 5 µg per lane.

Predicted band size: 68 kDa

Observed band size: 68 kDa



ab69999, at a 1/50 dilution, staining human TCF3/E2A in brain, using Immunohistochemistry, Formalin/PFA fixed Paraffin embedded tissue, minus immunising peptide (left image) and plus immunising peptide (right image).

Please note: All products are "FOR RESEARCH USE ONLY. NOT FOR USE IN DIAGNOSTIC PROCEDURES"

Our Abpromise to you: Quality guaranteed and expert technical support

- Replacement or refund for products not performing as stated on the datasheet
- Valid for 12 months from date of delivery
- Response to your inquiry within 24 hours
- We provide support in Chinese, English, French, German, Japanese and Spanish
- Extensive multi-media technical resources to help you
- We investigate all quality concerns to ensure our products perform to the highest standards

If the product does not perform as described on this datasheet, we will offer a refund or replacement. For full details of the Abpromise, please visit <https://www.abcam.co.jp/abpromise> or contact our technical team.

Terms and conditions

- Guarantee only valid for products bought direct from Abcam or one of our authorized distributors