

Anti-TCF19/SC1 antibody ab230005

★★★★☆ [1 Abreviews](#) [1 References](#) [画像数 2](#)

製品の概要

| | |
|--------------|-----------------------------------------------------------------------------------------------------------------------------------------------------------------------------------------------------------------------------------------------------------------------------------------------------------------------------------------------------------------------------------------------------------------------------------------------------------------------------------------------------------------------------------------------------------------------------------------------------------------|
| 製品名 | Anti-TCF19/SC1 antibody |
| 製品の詳細 | Rabbit polyclonal to TCF19/SC1 |
| 由来種 | Rabbit |
| アプリケーション | 適用あり: WB, IHC-P |
| 種交差性 | 交差種: Rat, Human 交差が予測される動物種: Chimpanzee, Rhesus monkey  |
| 免疫原 | Recombinant fragment corresponding to Human TCF19/SC1 aa 1-300. Database link: Q9Y242 Run BLAST with Run BLAST with |
| ポジティブ・コントロール | WB: HEK-293T whole cell lysate; Rat thymus tissue lysate. IHC-P: Human testis tissue. |
| 特記事項 | <p>The Life Science industry has been in the grips of a reproducibility crisis for a number of years. Abcam is leading the way in addressing this with our range of recombinant monoclonal antibodies and knockout edited cell lines for gold-standard validation. Please check that this product meets your needs before purchasing.</p> <p>If you have any questions, special requirements or concerns, please send us an inquiry and/or contact our Support team ahead of purchase. Recommended alternatives for this product can be found below, along with publications, customer reviews and Q&As</p> |

製品の特性

| | |
|--------|-----------------------------------------------------------------------------------------------------------------------------------|
| 製品の状態 | Liquid |
| 保存方法 | Shipped at 4°C. Store at +4°C short term (1-2 weeks). Upon delivery aliquot. Store at -20°C long term. Avoid freeze / thaw cycle. |
| バッファー | pH: 7.30 Preservative: 0.02% Sodium azide Constituents: PBS, 50% Glycerol |
| 精製度 | Immunogen affinity purified |
| ポリ/モノ | ポリクローナル |
| アイソタイプ | IgG |

アプリケーション

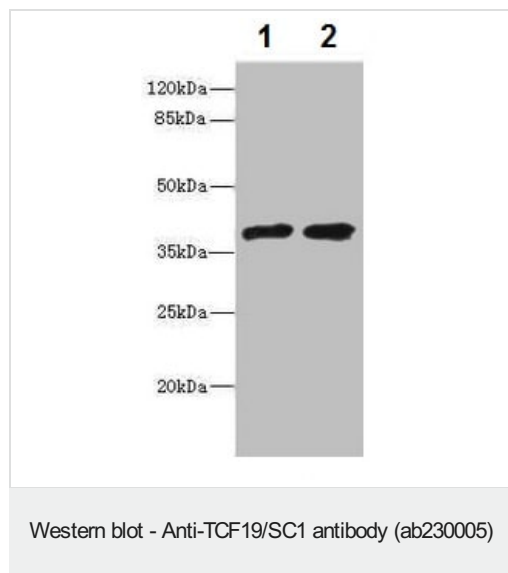
The Abpromise guarantee Abpromise保証は、次のテスト済みアプリケーションにおけるab230005の使用に適用されます
アプリケーションノートには、推奨の開始希釈率がありますが、適切な希釈率につきましてはご確認ください。

| アプリケーション | Abreviews | 特記事項 |
|----------|-----------|-----------------------------------------------------------------------------------------------|
| WB | ★★★★☆ (1) | 1/1000 - 1/5000. Detects a band of approximately 37 kDa (predicted molecular weight: 37 kDa). |
| IHC-P | | 1/20 - 1/200. |

ターゲット情報

| | |
|-------|------------------------------------------------------------------------------------------------------------------------------------------------------------|
| 機能 | Potential trans-activating factor that could play an important role in the transcription of genes required for the later stages of cell cycle progression. |
| 配列類似性 | Contains 1 FHA domain. Contains 1 PHD-type zinc finger. |
| 発生段階 | Growth regulated. |
| 翻訳後修飾 | Phosphorylated upon DNA damage, probably by ATM or ATR. |
| 細胞内局在 | Nucleus. |

画像



All lanes : Anti-TCF19/SC1 antibody (ab230005) at 1/1000 dilution

Lane 1 : HEK-293T (human epithelial cell line from embryonic kidney transformed with large T antigen) whole cell lysate

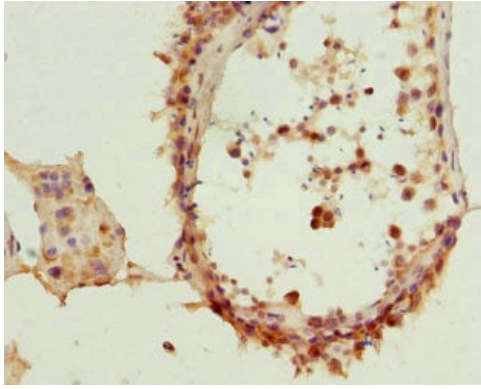
Lane 2 : Rat thymus lysate

Secondary

All lanes : Goat polyclonal to rabbit IgG at 1/10000 dilution

Predicted band size: 37 kDa

Observed band size: 37 kDa



Paraffin-embedded human testis tissue stained for TCF19/SC1 using ab230005 at 1/100 dilution in immunohistochemical analysis.

Immunohistochemistry (Formalin/PFA-fixed paraffin-embedded sections) - Anti-TCF19/SC1 antibody (ab230005)

Please note: All products are "FOR RESEARCH USE ONLY. NOT FOR USE IN DIAGNOSTIC PROCEDURES"

Our Abpromise to you: Quality guaranteed and expert technical support

- Replacement or refund for products not performing as stated on the datasheet
- Valid for 12 months from date of delivery
- Response to your inquiry within 24 hours

- We provide support in Chinese, English, French, German, Japanese and Spanish
- Extensive multi-media technical resources to help you
- We investigate all quality concerns to ensure our products perform to the highest standards

If the product does not perform as described on this datasheet, we will offer a refund or replacement. For full details of the Abpromise, please visit <https://www.abcam.co.jp/abpromise> or contact our technical team.

Terms and conditions

- Guarantee only valid for products bought direct from Abcam or one of our authorized distributors