

Anti-TBC1D15 antibody ab121396

★★★★★ [1 Abreviews](#) [3 References](#) [画像数 7](#)

製品の概要

製品名	Anti-TBC1D15 antibody
製品の詳細	Rabbit polyclonal to TBC1D15
由来種	Rabbit
アプリケーション	適用あり: ICC/IF, IHC-P, WB
種交差性	交差種: Mouse, Rat, Human
免疫原	antigen sequence, corresponding to internal sequence amino acids 169-286 of Human TBC1D15, isoform 2.
ポジティブ・コントロール	IHC-P: Human placenta, skin, kidney, and testis tissue sections. WB: NIH/3T3, NBT-II, and NTERA-2 cell lysates. ICC/IF: U-2 OS cells.
特記事項	<p>The Life Science industry has been in the grips of a reproducibility crisis for a number of years. Abcam is leading the way in addressing this with our range of recombinant monoclonal antibodies and knockout edited cell lines for gold-standard validation. Please check that this product meets your needs before purchasing.</p> <p>If you have any questions, special requirements or concerns, please send us an inquiry and/or contact our Support team ahead of purchase. Recommended alternatives for this product can be found below, along with publications, customer reviews and Q&As</p>

製品の特性

製品の状態	Liquid
保存方法	Shipped at 4°C. Upon delivery aliquot and store at -20°C. Avoid freeze / thaw cycles.
バッファー	<p>pH: 7.20</p> <p>Preservative: 0.02% Sodium azide</p> <p>Constituents: 59% PBS, 40% Glycerol (glycerin, glycerine)</p>
精製度	Immunogen affinity purified
ポリ/モノ	ポリクローナル
アイソタイプ	IgG

アプリケーション

The Abpromise guarantee

Abpromise保証は、次のテスト済みアプリケーションにおけるab121396の使用に適用されます

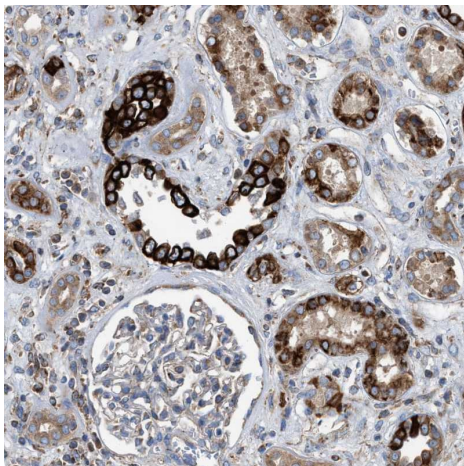
アプリケーションノートには、推奨の開始希釈率がありますが、適切な希釈率につきましてはご検討ください。

アプリケーション	Abreviews	特記事項
ICC/IF		Use a concentration of 0.25 - 2 µg/ml.
IHC-P		1/20 - 1/50. Perform heat mediated antigen retrieval with citrate buffer pH 6 before commencing with IHC staining protocol.
WB	★★★★★ (1)	Use a concentration of 0.04 - 0.4 µg/ml.

ターゲット情報

機能	Acts as a GTPase activating protein for RAB7A. Does not act on RAB4, RAB5 or RAB6.
配列類似性	Contains 1 Rab-GAP TBC domain.
細胞内局在	Cytoplasm.

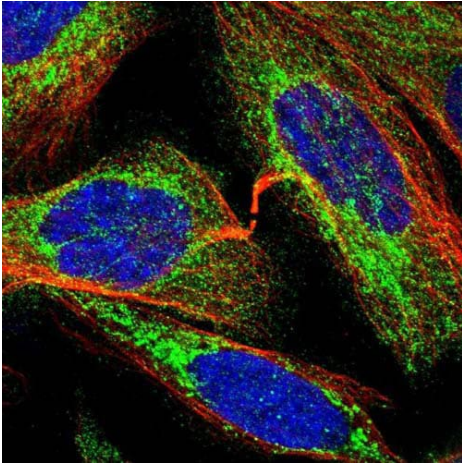
画像



Immunohistochemical analysis of paraffin embedded human kidney tissue labeling TBC1D15 with ab121396 antibody at a 1/20 dilution.

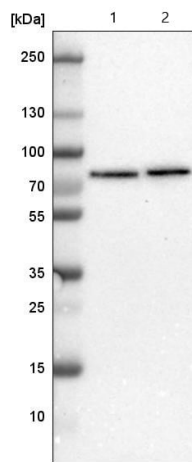
Performed heat mediated antigen retrieval with citrate buffer pH 6 before commencing with IHC staining protocol.

Immunohistochemistry (Formalin/PFA-fixed paraffin-embedded sections) - Anti-TBC1D15 antibody (ab121396)



Immunocytochemistry/ Immunofluorescence - Anti-TBC1D15 antibody (ab121396)

Immunofluorescent staining of Human cell line U-2 OS shows positivity in cytoplasm and mitochondria. Recommended concentration of ab121396 1-4 $\mu\text{g/ml}$. Cells treated with PFA/Triton X-100.

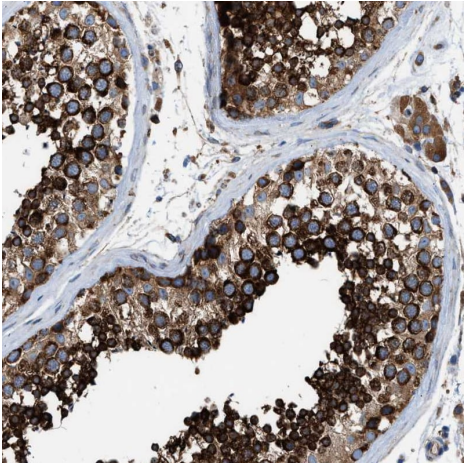


Western blot - Anti-TBC1D15 antibody (ab121396)

All lanes : Anti-TBC1D15 antibody (ab121396) at 0.4 $\mu\text{g/ml}$

Lane 1 : NIH/3T3 (mouse embryo fibroblast cell line) cell lysate

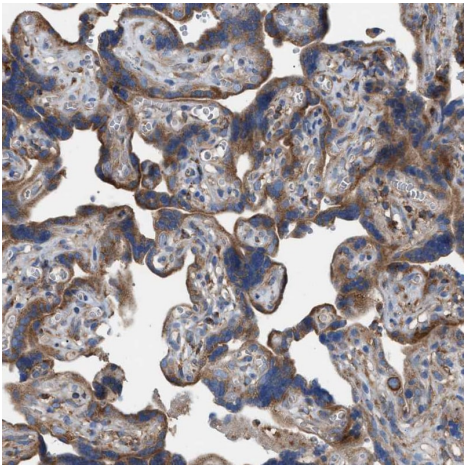
Lane 2 : NBT-II (rat urinary bladder tumor cell line) cell lysate



Immunohistochemistry (Formalin/PFA-fixed paraffin-embedded sections) - Anti-TBC1D15 antibody (ab121396)

Immunohistochemical analysis of paraffin embedded human testis tissue labeling TBC1D15 with ab121396 antibody at a 1/20 dilution.

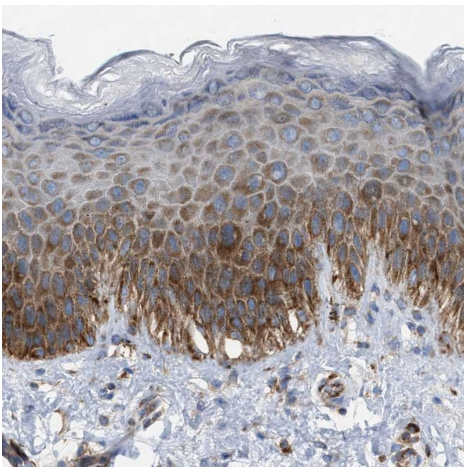
Performed heat mediated antigen retrieval with citrate buffer pH 6 before commencing with IHC staining protocol.



Immunohistochemistry (Formalin/PFA-fixed paraffin-embedded sections) - Anti-TBC1D15 antibody (ab121396)

Immunohistochemical analysis of paraffin embedded human placenta tissue labeling TBC1D15 with ab121396 antibody at a 1/20 dilution.

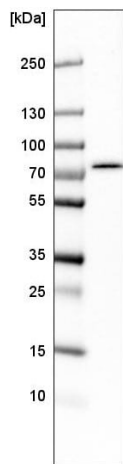
Performed heat mediated antigen retrieval with citrate buffer pH 6 before commencing with IHC staining protocol.



Immunohistochemistry (Formalin/PFA-fixed paraffin-embedded sections) - Anti-TBC1D15 antibody (ab121396)

Immunohistochemical analysis of paraffin embedded human skin tissue labeling TBC1D15 with ab121396 antibody at a 1/20 dilution.

Performed heat mediated antigen retrieval with citrate buffer pH 6 before commencing with IHC staining protocol.



Western blot - Anti-TBC1D15 antibody (ab121396)

Anti-TBC1D15 antibody (ab121396) at 0.4 µg/ml + NTERA-2 (human malignant pluripotent embryonic carcinoma cell line) cell lysate

Please note: All products are "FOR RESEARCH USE ONLY. NOT FOR USE IN DIAGNOSTIC PROCEDURES"

Our Abpromise to you: Quality guaranteed and expert technical support

- Replacement or refund for products not performing as stated on the datasheet
- Valid for 12 months from date of delivery
- Response to your inquiry within 24 hours
- We provide support in Chinese, English, French, German, Japanese and Spanish

- Extensive multi-media technical resources to help you
- We investigate all quality concerns to ensure our products perform to the highest standards

If the product does not perform as described on this datasheet, we will offer a refund or replacement. For full details of the Abpromise, please visit <https://www.abcam.co.jp/abpromise> or contact our technical team.

Terms and conditions

- Guarantee only valid for products bought direct from Abcam or one of our authorized distributors