

Anti-Talin 1 antibody [8D4] ab157808

6 References [画像数 3](#)

製品の概要

製品名	Anti-Talin 1 antibody [8D4]
製品の詳細	Mouse monoclonal [8D4] to Talin 1
由来種	Mouse
アプリケーション	適用あり: IP, WB, ICC/IF, Flow Cyt (Intra)
種交差性	交差種: Mouse, Rat, Chicken, Human, Frog
免疫原	Talin 1 protein purified from chicken gizzard.
エピトープ	ab157808 recognizes an epitope within the rod domain of Talin 1.
ポジティブ・コントロール	PC12 and Rabbit fibroblast cell lysates; Chick fibroblasts
特記事項	<p>The Life Science industry has been in the grips of a reproducibility crisis for a number of years. Abcam is leading the way in addressing this with our range of recombinant monoclonal antibodies and knockout edited cell lines for gold-standard validation. Please check that this product meets your needs before purchasing.</p> <p>If you have any questions, special requirements or concerns, please send us an inquiry and/or contact our Support team ahead of purchase. Recommended alternatives for this product can be found below, along with publications, customer reviews and Q&As</p>

製品の特性

製品の状態	Liquid
保存方法	Shipped at 4°C. Upon delivery aliquot and store at -20°C. Avoid freeze / thaw cycles.
バッファー	Preservative: 0.05% Sodium azide Constituents: 50% Glycerol, 0.1% BSA, 48% PBS
精製度	Protein A purified
ポリ/モノ	モノクローナル
クローン名	8D4
アイソタイプ	IgG1

アプリケーション

The Abpromise guarantee

Abpromise保証は、次のテスト済みアプリケーションにおけるab157808の使用に適用されます

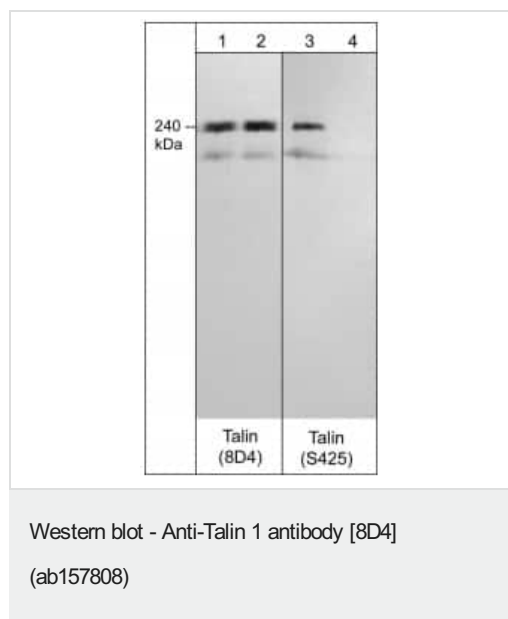
アプリケーションノートには、推奨の開始希釈率がありますが、適切な希釈率につきましてはご検討ください。

アプリケーション	Abreviews	特記事項
IP		Use at an assay dependent concentration.
WB		1/1000. Detects a band of approximately 240 kDa (predicted molecular weight: 269 kDa).
ICC/IF		1/100.
Flow Cyt (Intra)		1/1000. ab170190 - Mouse monoclonal IgG1, is suitable for use as an isotype control with this antibody.

ターゲット情報

機能	Probably involved in connections of major cytoskeletal structures to the plasma membrane. High molecular weight cytoskeletal protein concentrated at regions of cell-substratum contact and, in lymphocytes, at cell-cell contacts.
配列類似性	Contains 1 FERM domain. Contains 1 ILWEQ domain.
細胞内局在	Cell projection, ruffle membrane. Cytoplasm, cytoskeleton. Cell surface. Cell junction, focal adhesion. Colocalizes with LAYN at the membrane ruffles. Localized preferentially in focal adhesions than fibrillar adhesions (By similarity).

画像



Lanes 1-2 : Anti-Talin 1 antibody [8D4] (ab157808) at 1/1000 dilution

Lanes 3-4 : Anti-Talin 1 (phospho S425) antibody (**ab157807**) at 1/1000 dilution (Rabbit polyclonal to anti-Talin 1 (phospho Serine 425))

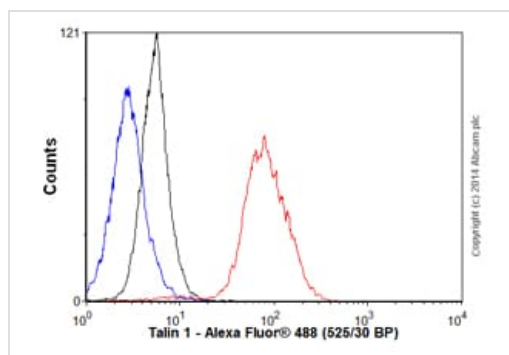
Lanes 1 & 3 : PC12 cell lysate - stimulated with calyculin A at 100nM for 30 minutes

Lanes 2 & 4 : PC12 cell lysate - stimulated with calyculin A at 100nM for 30 minutes and treated with lambda phosphatase

Predicted band size: 269 kDa

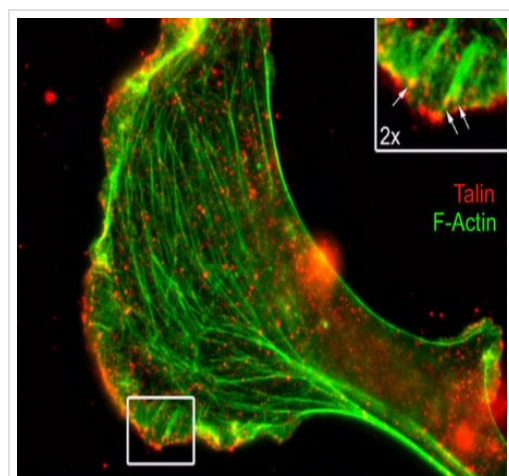
Observed band size: 240 kDa

Western blot membranes were incubated with diluted antibody in 5% non-fat milk, PBS and 0.04% Tween20 for 1 hour at room temperature.



Flow Cytometry (Intracellular) - Anti-Talin 1 antibody [8D4] (ab157808)

Overlay histogram showing RAW 264.7 cells stained with ab157808 (red line). The cells were fixed with 80% methanol (5 min)/ and then permeabilized with 0.1% PBS-Tween for 20 min. The cells were then incubated in 1x PBS / 10% normal goat serum / 0.3M glycine to block non-specific protein-protein interactions followed by the antibody (ab157808, 1/1000 dilution) for 30 min at 22°C. The secondary antibody used was Alexa Fluor® 488 goat anti-mouse IgG (H&L) (**ab150113**) at 1/2000 dilution for 30 min at 22°C. Isotype control antibody (black line) was mouse IgG1 [ICIGG1] (**ab91353**, 1µg/1x10⁶ cells) used under the same conditions. Unlabelled sample (blue line) was also used as a control. Acquisition of >5,000 events were collected using a 20mW Argon ion laser (488nm) and 525/30 bandpass filter. This antibody gave a positive signal in RAW 264.7 cells fixed with 4% formaldehyde (10 min)/permeabilized with 0.1% PBS-Tween for 20 min used under the same conditions.



Immunocytochemistry/ Immunofluorescence - Anti-Talin 1 antibody [8D4] (ab157808)

Immunocytochemical analysis of chick fibroblasts labelling Talin 1 with ab157808 at 1/100 (red). F-actin was stained in green. Image provided by Dr. Gianluca Gallo at Drexel University.

Please note: All products are "FOR RESEARCH USE ONLY. NOT FOR USE IN DIAGNOSTIC PROCEDURES"

Our Promise to you: Quality guaranteed and expert technical support

- Replacement or refund for products not performing as stated on the datasheet
- Valid for 12 months from date of delivery
- Response to your inquiry within 24 hours

- We provide support in Chinese, English, French, German, Japanese and Spanish
- Extensive multi-media technical resources to help you
- We investigate all quality concerns to ensure our products perform to the highest standards

If the product does not perform as described on this datasheet, we will offer a refund or replacement. For full details of the Abpromise, please visit <https://www.abcam.co.jp/abpromise> or contact our technical team.

Terms and conditions

- Guarantee only valid for products bought direct from Abcam or one of our authorized distributors