

# Anti-TAGLN/Transgelin antibody ab14106

★★★★★ [27 Abreviews](#) [383 References](#) [画像数 6](#)

### 製品の概要

製品名	Anti-TAGLN/Transgelin antibody
製品の詳細	Rabbit polyclonal to TAGLN/Transgelin
由来種	Rabbit
特異性	The immunogen used to generate this TAGLN/Transgelin antibody (ab14106) shares 75% homology with family members TAGLN2 and TAGLN3. Cross-reactivity with these proteins has not been confirmed experimentally.
アプリケーション	<b>適用あり:</b> ICC/IF, WB
種交差性	<b>交差種:</b> Mouse, Rat, Human
免疫原	Synthetic peptide within Mouse TAGLN/Transgelin aa 150 to the C-terminus conjugated to keyhole limpet haemocyanin. The exact sequence is proprietary. (Peptide available as <a href="#">ab16067</a> )
ポジティブ・コントロール	WB: Human primary smooth muscle cells; HeLa whole cell lysate; Mouse colon tissue lysate; Rat colon tissue lysate. ICC/IF: HeLa cells; mouse muscle cells.
特記事項	<p>The Life Science industry has been in the grips of a reproducibility crisis for a number of years. Abcam is leading the way in addressing this with our range of recombinant monoclonal antibodies and knockout edited cell lines for gold-standard validation. Please check that this product meets your needs before purchasing.</p> <p>If you have any questions, special requirements or concerns, please send us an inquiry and/or contact our Support team ahead of purchase. Recommended alternatives for this product can be found below, along with publications, customer reviews and Q&amp;As</p>

### 製品の特性

製品の状態	Liquid
保存方法	Shipped at 4°C. Store at +4°C short term (1-2 weeks). Upon delivery aliquot. Store at -20°C or -80°C. Avoid freeze / thaw cycle.
バッファー	<p>pH: 7.40</p> <p>Preservative: 0.02% Sodium azide</p> <p>Constituent: PBS</p>

Batches of this product that have a concentration < 1mg/ml may have BSA added as a stabilising agent. If you would like information about the formulation of a specific lot, please contact our

	scientific support team who will be happy to help.
精製度	Immunogen affinity purified
ポリ/モノ	ポリクローナル
アイソタイプ	IgG

## アプリケーション

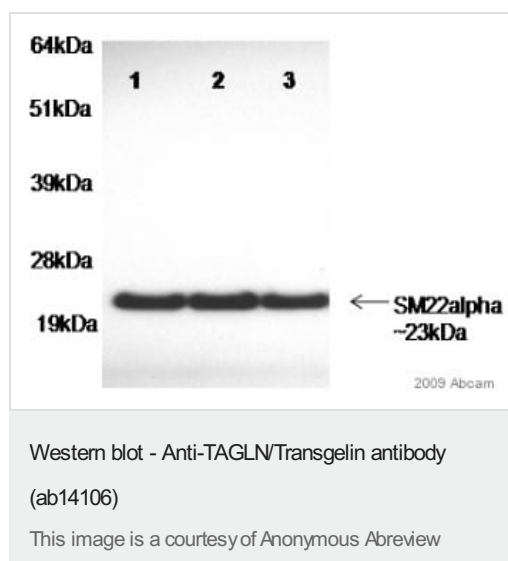
**The Abpromise guarantee** Abpromise保証は、次のテスト済みアプリケーションにおけるab14106の使用に適用されます  
 アプリケーションノートには、推奨の開始希釈率がありますが、適切な希釈率につきましてはご検討ください。

アプリケーション	Abreviews	特記事項
ICC/IF	★★★★★ (8)	Use a concentration of 1 - 5 µg/ml.
WB	★★★★★ (12)	Use a concentration of 1 µg/ml. Detects a band of approximately 23 kDa (predicted molecular weight: 23 kDa).

## ターゲット情報

機能	Actin cross-linking/gelling protein (By similarity). Involved in calcium interactions and contractile properties of the cell that may contribute to replicative senescence.
配列類似性	Belongs to the calponin family. Contains 1 calponin-like repeat. Contains 1 CH (calponin-homology) domain.
細胞内局在	Cytoplasm.

## 画像



**All lanes** : Anti-TAGLN/Transgelin antibody (ab14106) at 1/1000 dilution

**All lanes** : Lysates prepared from human primary smooth muscle cells

Lysates/proteins at 30 µg per lane.

### Secondary

**All lanes** : HRP-conjugated bovine polyclonal to rabbit IgG at 1/2000 dilution

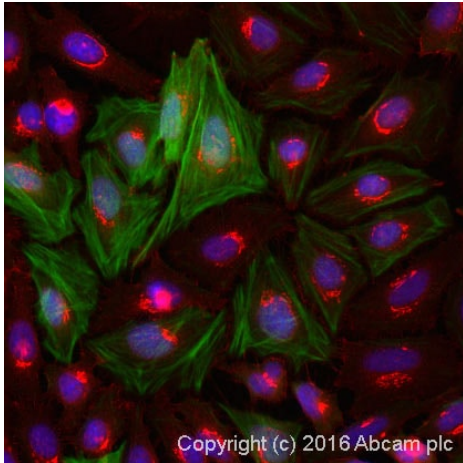
Developed using the ECL technique.

Performed under reducing conditions.

**Predicted band size:** 23 kDa

**Observed band size:** 23 kDa

**Exposure time:** 2 minutes

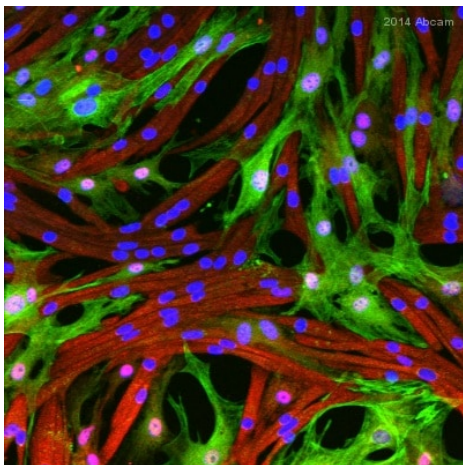


Immunocytochemistry/ Immunofluorescence - Anti-TAGLN/Transgelin antibody (ab14106)

ab14106 stained HeLa (Human epithelial cell line from cervix adenocarcinoma) cells.

The cells were fixed in 100% methanol for 5 minutes, permeabilized in 0.1% PBS-Triton X-100 for 5 minutes and then incubated in 1% BSA / 10% normal goat serum / 0.3M glycine in 0.1% PBS-Tween for 1 hour at room temperature to block non-specific protein-protein interactions. The cells were then incubated with the antibody (ab14106 at 1 µg/ml) overnight at +4°C. The secondary antibody (pseudo-colored green) was **ab150081** Goat Anti-Rabbit IgG H&L (Alexa Fluor® 488) preadsorbed used at a 1/1000 dilution for 1 hour at room temperature. Alexa Fluor® 594 WGA was used to label plasma membranes (pseudo-colored red) at a 1/200 dilution for 1 hour at room temperature.

DAPI was used to stain the cell nuclei (pseudo-colored blue) at a concentration of 1.43µM for 1 hour at room temperature.

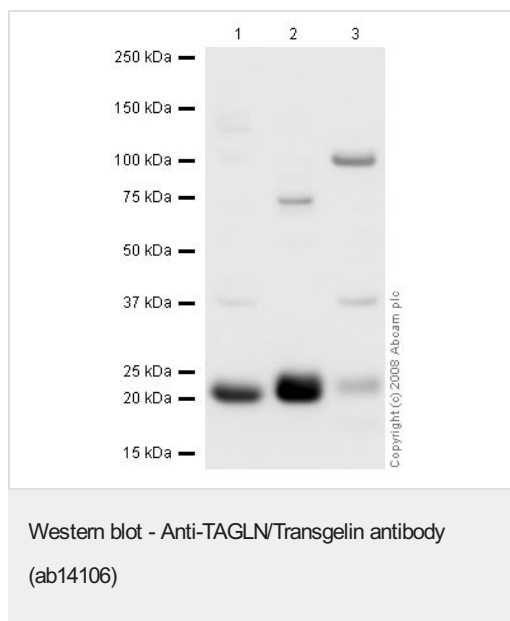


Immunocytochemistry/ Immunofluorescence - Anti-TAGLN/Transgelin antibody (ab14106)

This image is courtesy of an anonymous Abreview.

ab14106 staining SM22 alpha in mouse muscle cells by ICC/IF (Immunocytochemistry/immunofluorescence).

Cells were fixed with paraformaldehyde, permeabilized with 0.1% Triton X-100 and blocked with 10% serum for 30 minutes at 25°C. Samples were incubated with primary antibody (1/100 in PBS) for 18 hours at 4°C. An Alexa Fluor® 488-conjugated goat anti-rabbit IgG polyclonal was used as the secondary antibody at a dilution of 1/1000.



**All lanes :** Anti-TAGLN/Transgelin antibody (ab14106) at 1 µg/ml

**Lane 1 :** HeLa (Human epithelial cell line from cervix adenocarcinoma) whole cell lysate

**Lane 2 :** HeLa nuclear extract

**Lane 3 :** Human skeletal muscle tissue lysate

Lysates/proteins at 20 µg per lane.

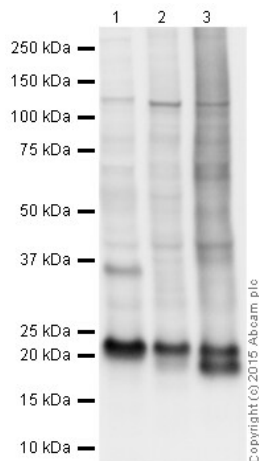
### Secondary

**All lanes :** Alexa Fluor Goat polyclonal to Rabbit IgG at 1/10000 dilution

**Predicted band size:** 23 kDa

**Observed band size:** 23 kDa

The band was completely abolished by peptide blocking with **ab16067** (immunizing peptide) - not shown.



Western blot - Anti-TAGLN/Transgelin antibody  
(ab14106)

**All lanes :** Anti-TAGLN/Transgelin antibody (ab14106) at 1 µg/ml

**Lane 1 :** Human colon tissue lysate - total protein ([ab30051](#))

**Lane 2 :** Mouse colon tissue lysate

**Lane 3 :** Rat colon tissue lysate

Lysates/proteins at 10 µg per lane.

### Secondary

**All lanes :** Goat Anti-Rabbit IgG H&L (HRP) preadsorbed at  
1/50000 dilution

Developed using the ECL technique.

Performed under reducing conditions.

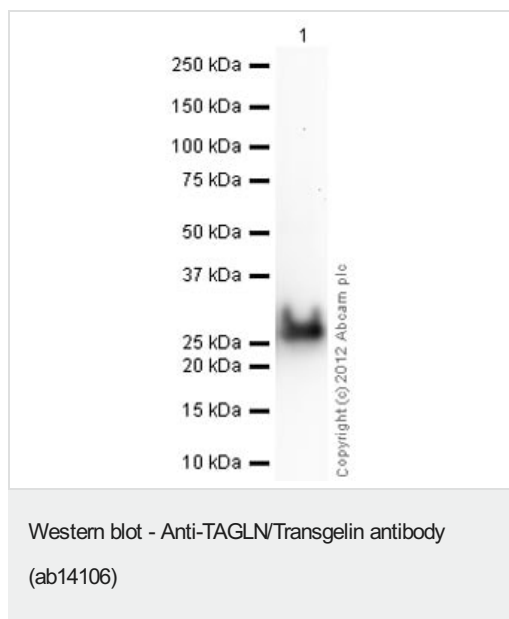
**Predicted band size:** 23 kDa

**Observed band size:** 23 kDa

**Additional bands at:** 115 kDa, 20 kDa, 36 kDa. We are unsure as  
to the identity of these extra bands.

**Exposure time:** 5 seconds

This blot was produced using a 4-12% Bis-tris gel under the MES buffer system. The gel was run at 200V for 35 minutes before being transferred onto a Nitrocellulose membrane at 30V for 70 minutes. The membrane was then blocked for an hour using 2% Bovine Serum Albumin before being incubated with ab14106 overnight at 4°C. Antibody binding was detected using an anti-rabbit antibody conjugated to HRP, and visualised using ECL development solution [ab133406](#).



Anti-TAGLN/Transgelin antibody (ab14106) at 1 µg/ml +  
Recombinant Human TAGLN/Transgelin protein (**ab101469**) at  
0.01 µg

#### Secondary

Goat Anti-Rabbit IgG H&L (HRP) preadsorbed (**ab97080**) at  
1/5000 dilution

Developed using the ECL technique.

Performed under reducing conditions.

**Predicted band size:** 23 kDa

**Exposure time:** 30 seconds

**Please note:** All products are "FOR RESEARCH USE ONLY. NOT FOR USE IN DIAGNOSTIC PROCEDURES"

#### Our Abpromise to you: Quality guaranteed and expert technical support

- Replacement or refund for products not performing as stated on the datasheet
- Valid for 12 months from date of delivery
- Response to your inquiry within 24 hours
- We provide support in Chinese, English, French, German, Japanese and Spanish
- Extensive multi-media technical resources to help you
- We investigate all quality concerns to ensure our products perform to the highest standards

If the product does not perform as described on this datasheet, we will offer a refund or replacement. For full details of the Abpromise, please visit <https://www.abcam.co.jp/abpromise> or contact our technical team.

#### Terms and conditions

- Guarantee only valid for products bought direct from Abcam or one of our authorized distributors