

### Anti-Synaptotagmin antibody [ASV30] ab13259

★★★★★ [1 Abreviews](#) [23 References](#) [画像数 3](#)

#### 製品の概要

---

製品名	Anti-Synaptotagmin antibody [ASV30]
製品の詳細	Mouse monoclonal [ASV30] to Synaptotagmin
由来種	Mouse
特異性	ab13259 is not specific to SYT2 but is a pan-synaptotagmin antibody. It does not distinguish between the Synaptotagmin family of proteins.
アプリケーション	<b>適用あり:</b> WB, ICC/IF, IP
種交差性	<b>交差種:</b> Mouse, Rat
免疫原	Full length protein corresponding to Rat Synaptotagmin. Rat brain synaptic junction protein complexes Database link: <a href="#">P21707</a>
ポジティブ・コントロール	Mouse or Rat brain tissue extract.
特記事項	<p>This product was changed from ascites to tissue culture supernatant on 5th July 2019. Lot numbers higher than GR3258922 are from tissue culture supernatant. Please note that the dilutions may need to be adjusted accordingly. If you have any questions, please do not hesitate to contact our scientific support team.</p> <p>The Life Science industry has been in the grips of a reproducibility crisis for a number of years. Abcam is leading the way in addressing this with our range of recombinant monoclonal antibodies and knockout edited cell lines for gold-standard validation. Please check that this product meets your needs before purchasing.</p> <p>If you have any questions, special requirements or concerns, please send us an inquiry and/or contact our Support team ahead of purchase. Recommended alternatives for this product can be found below, along with publications, customer reviews and Q&amp;As</p>

#### 製品の特性

---

製品の状態	Liquid
保存方法	Shipped at 4°C. Upon delivery aliquot and store at -20°C. Avoid freeze / thaw cycles.
バッファー	Preservative: 0.09% Sodium azide Constituents: PBS, 50% Glycerol (glycerin, glycerine)
精製度	Protein G purified
特記事項(精製)	Purified from TCS.

ポリ/モノ	モノクローナル
クローン名	ASV30
アイソタイプ	IgG2a

## アプリケーション

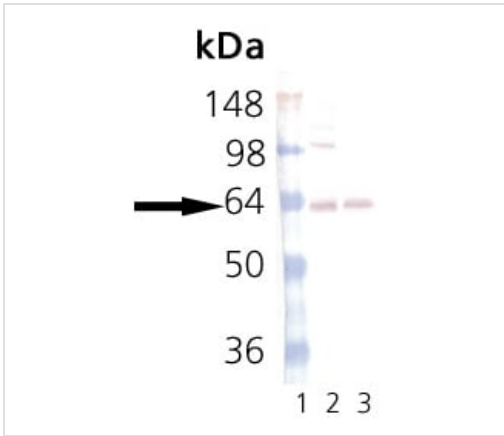
**The Abpromise guarantee** **Abpromise保証は、次のテスト済みアプリケーションにおけるab13259の使用に適用されず**  
 アプリケーションノートには、推奨の開始希釈率がありますが、適切な希釈率につきましてはご検討ください。

アプリケーション	Abreviews	特記事項
WB	★★★★★ (1)	1/1000.
ICC/IF		Use a concentration of 5 µg/ml.
IP		Use a concentration of 5 µg/ml.

## ターゲット情報

<b>機能</b>	May have a regulatory role in the membrane interactions during trafficking of synaptic vesicles at the active zone of the synapse. It binds acidic phospholipids with a specificity that requires the presence of both an acidic head group and a diacyl backbone.
<b>配列類似性</b>	Belongs to the synaptotagmin family. Contains 2 C2 domains.
<b>ドメイン</b>	The first C2 domain mediates Ca(2+)-dependent phospholipid binding. The second C2 domain mediates interaction with Stonin 2.
<b>細胞内局在</b>	Cytoplasmic vesicle, secretory vesicle, synaptic vesicle membrane. Cytoplasmic vesicle, secretory vesicle, chromaffin granule membrane. Synaptic vesicles and chromaffin granules.

## 画像



Western blot - Anti-Synaptotagmin antibody [ASV30] (ab13259)

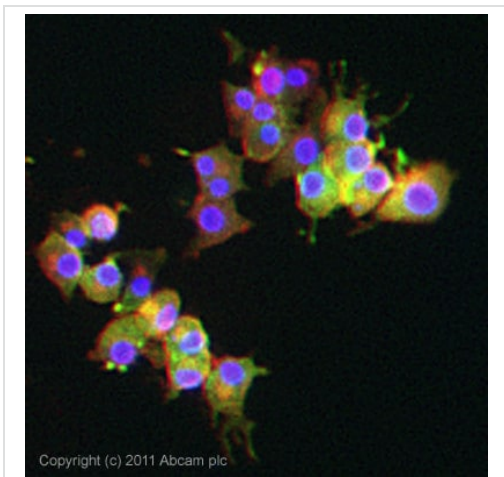
**All lanes :** Anti-Synaptotagmin antibody [ASV30] (ab13259) at 1/1000 dilution

**Lane 1 :** Molecular weight ladder

**Lane 2 :** Lysates prepared from mouse brain

**Lane 3 :** Lysates prepared from rat brain

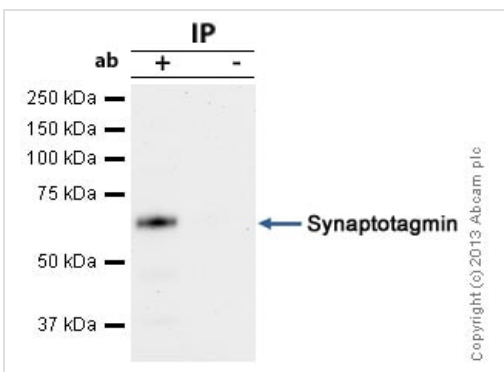
This image was generated using the ascites version of the product.



Immunocytochemistry/ Immunofluorescence - Anti-Synaptotagmin antibody [ASV30] (ab13259)

ICC/IF image of ab13259 stained PC12 cells. The cells were 4% formaldehyde fixed (10 min) and then incubated in 1%BSA / 10% normal goat serum / 0.3M glycine in 0.1% PBS-Tween for 1h to permeabilise the cells and block non-specific protein-protein interactions. The cells were then incubated with the antibody (ab13259, 5µg/ml) overnight at +4°C. The secondary antibody (green) was Alexa Fluor® 488 goat anti-mouse IgG (H+L) used at a 1/1000 dilution for 1h. Alexa Fluor® 594 WGA was used to label plasma membranes (red) at a 1/200 dilution for 1h. DAPI was used to stain the cell nuclei (blue) at a concentration of 1.43µM.

This image was generated using the ascites version of the product.



Immunoprecipitation - Anti-Synaptotagmin antibody [ASV30] (ab13259)

Synaptotagmin was immunoprecipitated using 0.5mg Mouse Brain tissue lysate, 5µg of Mouse monoclonal to Synaptotagmin and 50µl of protein G magnetic beads (+). No antibody was added to the control (-).

The antibody was incubated under agitation with Protein G beads for 10min, Mouse Brain tissue lysate lysate diluted in RIPA buffer was added to each sample and incubated for a further 10min under agitation.

Proteins were eluted by addition of 40µl SDS loading buffer and incubated for 10min at 70°C; 10µl of each sample was separated on a SDS PAGE gel, transferred to a nitrocellulose membrane, blocked with 5% BSA and probed with ab13259.

Secondary: Goat polyclonal to mouse IgG light chain specific (HRP) at 1/20,000 dilution.

Band: 64kDa; Synaptotagmin

This image was generated using the ascites version of the product.

**Please note:** All products are "FOR RESEARCH USE ONLY. NOT FOR USE IN DIAGNOSTIC PROCEDURES"

### **Our Abpromise to you: Quality guaranteed and expert technical support**

---

- Replacement or refund for products not performing as stated on the datasheet
- Valid for 12 months from date of delivery
- Response to your inquiry within 24 hours
  
- We provide support in Chinese, English, French, German, Japanese and Spanish
- Extensive multi-media technical resources to help you
- We investigate all quality concerns to ensure our products perform to the highest standards

If the product does not perform as described on this datasheet, we will offer a refund or replacement. For full details of the Abpromise, please visit <https://www.abcam.co.jp/abpromise> or contact our technical team.

### **Terms and conditions**

---

- Guarantee only valid for products bought direct from Abcam or one of our authorized distributors