

### Anti-Synaptophysin antibody [EP1098Y] ab52636

KO 評価済 リコンビナント RabMAb

★★★★★ 10 Abreviews 49 References 画像数 6

#### 製品の概要

製品名	Anti-Synaptophysin antibody [EP1098Y]
製品の詳細	Rabbit monoclonal [EP1098Y] to Synaptophysin
由来種	Rabbit
アプリケーション	<b>適用あり:</b> WB, Flow Cyt (Intra), ICC/IF <b>適用なし:</b> IHC-P
種交差性	<b>交差種:</b> Mouse, Rat, Human
免疫原	Synthetic peptide within Human Synaptophysin aa 200-300. The exact sequence is proprietary.
ポジティブ・コントロール	ICC/IF: PC12 cells. Flow Cyt (intra): PC12 cells. WB: Human, mouse and rat brain tissue lysates. HEK-293T cell lysate.
特記事項	<p>This product is a recombinant monoclonal antibody, which offers several advantages including:</p> <ul style="list-style-type: none"> <li>- High batch-to-batch consistency and reproducibility</li> <li>- Improved sensitivity and specificity</li> <li>- Long-term security of supply</li> <li>- Animal-free production</li> </ul> <p>For more information <a href="#">see here</a>.</p> <p>Our RabMAb<sup>®</sup> technology is a patented hybridoma-based technology for making rabbit monoclonal antibodies. For details on our patents, please refer to <a href="#">RabMAb<sup>®</sup> patents</a>.</p>

#### 製品の特性

製品の状態	Liquid
保存方法	Shipped at 4°C. Store at -20°C. Stable for 12 months at -20°C.
バッファー	pH: 7.20 Preservative: 0.05% Sodium azide Constituents: 0.1% BSA, 40% Glycerol (glycerin, glycerine), 9.85% Tris glycine, 50% Tissue culture supernatant
精製度	Protein A purified
ポリ/モノ	モノクローナル
クローン名	EP1098Y

アイソタイプIgG

アプリケーション

The Abpromise guarantee      **Abpromise保証は、次のテスト済みアプリケーションにおけるab52636の使用に適用されます**  
アプリケーションノートには、推奨の開始希釈率がありますが、適切な希釈率につきましてはご検討ください。

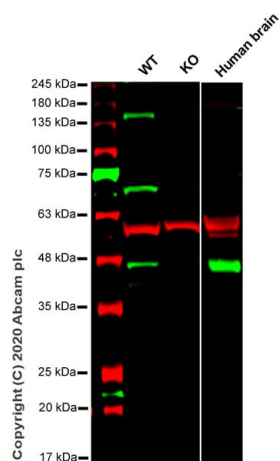
アプリケーション	Abreviews	特記事項
WB	★★★★★ (3)	1/1000 - 1/10000. Detects a band of approximately 38 kDa (predicted molecular weight: 34 kDa).
Flow Cyt (Intra)		1/20 - 1/100. <b>ab172730</b> - Rabbit monoclonal IgG, is suitable for use as an isotype control with this antibody.
ICC/IF	★★★★★ (3)	1/250 - 1/500.

追加情報      Is unsuitable for IHC-P.

ターゲット情報

機能	Possibly involved in structural functions as organizing other membrane components or in targeting the vesicles to the plasma membrane. Involved in the regulation of short-term and long-term synaptic plasticity.
組織特異性	Characteristic of a type of small (30-80 nm) neurosecretory vesicles, including presynaptic vesicles, but also vesicles of various neuroendocrine cells of both neuronal and epithelial phenotype.
関連疾患	Mental retardation, X-linked, SYP-related
配列類似性	Belongs to the synaptophysin/synaptobrevin family. Contains 1 MARVEL domain.
ドメイン	The calcium-binding activity is thought to be localized in the cytoplasmic tail of the protein.
翻訳後修飾	Ubiquitinated; mediated by SIAH1 or SIAH2 and leading to its subsequent proteasomal degradation.
細胞内局在	Cytoplasmic vesicle, secretory vesicle, synaptic vesicle membrane. Cell junction, synapse, synaptosome.

画像



Western blot - Anti-Synaptophysin antibody  
[EP1098Y] (ab52636)

**All lanes :** Anti-Synaptophysin antibody [EP1098Y] (ab52636) at 1/1000 dilution

**Lane 1 :** Wild-type HEK-293T cell lysate at 20 µg

**Lane 2 :** SYP knockout HEK-293T cell lysate at 20 µg

**Lane 3 :** Human brain tissue lysate

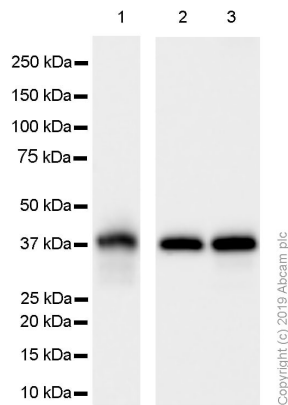
Performed under reducing conditions.

**Predicted band size:** 34 kDa

**Observed band size:** 38 kDa

**Lanes 1-3:** Merged signal (red and green). Green - ab52636 observed at 38 kDa. Red - loading control, **ab7291** observed at 50 kDa.

ab52636 Anti-Synaptophysin antibody [EP1098Y] was shown to specifically react with Synaptophysin in wild-type HEK293T cells. Loss of signal was observed when knockout cell line **ab267272** (knockout cell lysate **ab257060**) was used. Wild-type and Synaptophysin knockout samples were subjected to SDS-PAGE. ab52636 and Anti-alpha Tubulin antibody [DM1A] - Loading Control (**ab7291**) were incubated overnight at 4°C at 1 in 1000 dilution and 1 in 20000 dilution respectively. Blots were developed with Goat anti- Rabbit IgG H&L (IRDye® 800CW) preadsorbed (**ab216773**) and Goat anti- Mouse IgG H&L (IRDye® 680RD) preadsorbed (**ab216776**) secondary antibodies at 1 in 10000 dilution for 1 hour at room temperature before imaging.



Western blot - Anti-Synaptophysin antibody  
[EP1098Y] (ab52636)

**All lanes :** Anti-Synaptophysin antibody [EP1098Y] (ab52636) at 0.203 µg/ml

**Lane 1 :** Human brain tissue lysate

**Lane 2 :** Mouse brain tissue lysate

**Lane 3 :** Rat brain lysate tissue lysate

Lysates/proteins at 20 µg per lane.

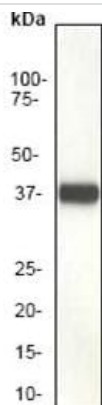
### Secondary

**All lanes :** Goat Anti-Rabbit IgG H&L (HRP) (**ab97051**) at 0.05 µg

**Predicted band size:** 34 kDa

**Observed band size:** 38 kDa

Blocking/Diluting buffer and concentration: 5% NFDM /TBST



Western blot - Anti-Synaptophysin antibody  
[EP1098Y] (ab52636)

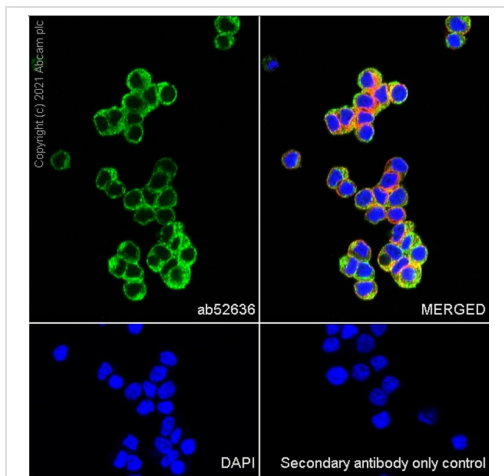
Anti-Synaptophysin antibody [EP1098Y] (ab52636) at 1/200000 dilution + Rat brain membrane

### Secondary

Goat anti-rabbit HRP labeled at 1/2000 dilution

**Predicted band size:** 34 kDa

**Observed band size:** 38 kDa



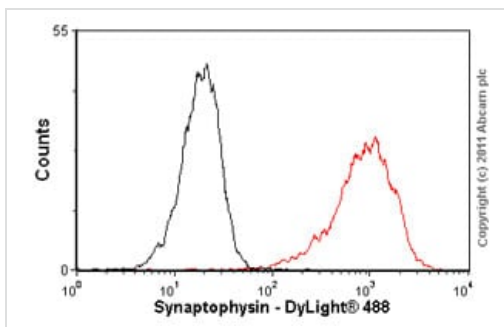
Immunocytochemistry/ Immunofluorescence - Anti-Synaptophysin antibody [EP1098Y] (ab52636)

Immunocytochemical analysis of 4% paraformaldehyde-fixed, 0.1% Triton X-100 permeabilized PC-12 (Rat adrenal gland pheochromocytoma) cells labeling Synaptophysin with ab52636 at 1/250 dilution followed by Goat Anti-Rabbit IgG H&L (Alexa Fluor® 488) ([ab150077](#)) secondary antibody at 1/1000 dilution (green).

Confocal image showing cytoplasmic staining in PC-12 cell line.

The nuclear counter stain is DAPI (blue). Tubulin is detected with Anti-alpha Tubulin antibody [DM1A] - Microtubule Marker (Alexa Fluor® 594) ([ab195889](#)) (red) at 1/200 dilution.

Secondary antibody only control: Used PBS instead of primary antibody, secondary antibody is Goat Anti-Rabbit IgG H&L (Alexa Fluor® 488) ([ab150077](#)) secondary antibody at 1/1000 dilution.



Flow Cytometry (Intracellular) - Anti-Synaptophysin antibody [EP1098Y] (ab52636)

Overlay histogram showing PC12 cells stained with ab52636 (red line). The cells were fixed with methanol (5 min) and incubated in 1x PBS / 10% normal goat serum / 0.3M glycine to block non-specific protein-protein interactions. The cells were then incubated with the antibody (ab52636, 1/100 dilution) for 30 min at 22°C. The secondary antibody used was DyLight® 488 goat anti-rabbit IgG (H+L) ([ab96899](#)) at 1/500 dilution for 30 min at 22°C. Isotype control antibody (black line) was rabbit monoclonal IgG (0.5µg/1x10<sup>6</sup> cells) used under the same conditions. Acquisition of >5,000 events was performed. This antibody gave a slightly decreased signal in PC12 cells fixed with 4% paraformaldehyde (10 min) used under the same conditions. Please note that Abcam do not have data for use of this antibody on non-fixed cells. We welcome any customer feedback.

### Why choose a recombinant antibody?



**Research with confidence**  
Consistent and reproducible results



**Long-term and scalable supply**  
Recombinant technology



**Success from the first experiment**  
Confirmed specificity



**Ethical standards compliant**  
Animal-free production

Anti-Synaptophysin antibody [EP1098Y] (ab52636)

**Please note:** All products are "FOR RESEARCH USE ONLY. NOT FOR USE IN DIAGNOSTIC PROCEDURES"

### Our Abpromise to you: Quality guaranteed and expert technical support

---

- Replacement or refund for products not performing as stated on the datasheet
- Valid for 12 months from date of delivery
- Response to your inquiry within 24 hours
- We provide support in Chinese, English, French, German, Japanese and Spanish
- Extensive multi-media technical resources to help you
- We investigate all quality concerns to ensure our products perform to the highest standards

If the product does not perform as described on this datasheet, we will offer a refund or replacement. For full details of the Abpromise, please visit <https://www.abcam.co.jp/abpromise> or contact our technical team.

### Terms and conditions

---

- Guarantee only valid for products bought direct from Abcam or one of our authorized distributors