

# Anti-SV40 T-antigen antibody [EPR22694-148] ab234426

リコンビナント RabMAb

## 1 References [画像数 5](#)

### 製品の概要

製品名	Anti-SV40 T-antigen antibody [EPR22694-148]
製品の詳細	Rabbit monoclonal [EPR22694-148] to SV40 T-antigen
由来種	Rabbit
アプリケーション	<b>適用あり:</b> Flow Cyt (Intra), ICC/IF, IP, WB
種交差性	<b>交差種:</b> Simian Virus 40
免疫原	Recombinant fragment. This information is proprietary to Abcam and/or its suppliers.
ポジティブ・コントロール	WB: 293T (SV40 transfected human embryonic kidney epithelial cell) whole cell lysate . ICC/IF: HEK-293T cells. Flow: HEK-293T (SV40 transfected). IP: HEK-239T whole cell lysate.
特記事項	<p>This product is a recombinant monoclonal antibody, which offers several advantages including:</p> <ul style="list-style-type: none"><li>- High batch-to-batch consistency and reproducibility</li><li>- Improved sensitivity and specificity</li><li>- Long-term security of supply</li><li>- Animal-free production</li></ul> <p>For more information <a href="#">see here</a>.</p> <p>Our RabMAb<sup>®</sup> technology is a patented hybridoma-based technology for making rabbit monoclonal antibodies. For details on our patents, please refer to <a href="#">RabMAb<sup>®</sup> patents</a>.</p>

### 製品の特性

製品の状態	Liquid
保存方法	Shipped at 4°C. Store at +4°C short term (1-2 weeks). Upon delivery aliquot. Store at -20°C long term. Avoid freeze / thaw cycle.
バッファー	pH: 7.2 Preservative: 0.01% Sodium azide Constituents: 40% Glycerol (glycerin, glycerine), 0.05% BSA, PBS
精製度	Protein A purified
ポリ/モノ	モノクローナル
クローン名	EPR22694-148
アイソタイプ	IgG

## アプリケーション

The Abpromise guarantee **Abpromise保証は、次のテスト済みアプリケーションにおけるab234426の使用に適用されます**  
アプリケーションノートには、推奨の開始希釈率がありますが、適切な希釈率につきましてはご検討ください。

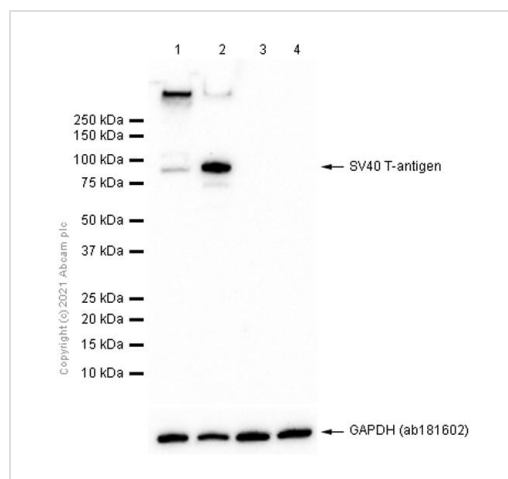
アプリケーション	Abreviews	特記事項
Flow Cyt (Intra)		1/500.
ICC/IF		1/50.
IP		1/30.
WB		1/1000.

## ターゲット情報

細胞内局在

Nuclear

## 画像



Western blot - Anti-SV40 T-antigen antibody  
[EPR22694-148] (ab234426)

**All lanes** : Anti-SV40 T-antigen antibody [EPR22694-148]  
(ab234426) at 1/5000 dilution

**Lane 1** : 293T (SV40 transfected human embryonic kidney epithelial cell) whole cell lysate prepared in RIPA lysis method

**Lane 2** : 293T (SV40 transfected human embryonic kidney epithelial cell) whole cell lysate prepared in 1%SDS Hot lysis method

**Lane 3** : HEK-293 (Human embryonic kidney epithelial cell) whole cell lysate prepared in RIPA lysis method

**Lane 4** : HEK-293 (Human embryonic kidney epithelial cell) whole cell lysate prepared in 1%SDS Hot lysis method

Lysates/proteins at 20 µg per lane.

### Secondary

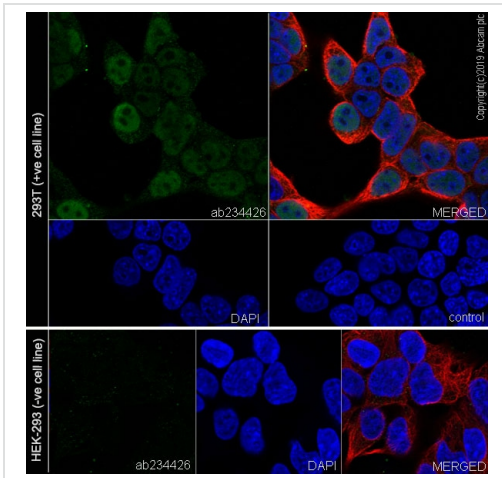
**All lanes** : Goat Anti-Rabbit IgG H&L (HRP) (**ab97051**) at  
1/100000 dilution

**Observed band size:** 90 kDa

**Exposure time:** 40 seconds

Blocking buffer and concentration: 5% NFDN/TBST

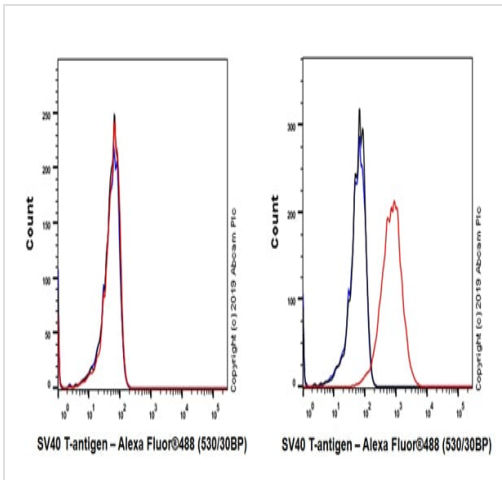
Diluting buffer and concentration: 5% NFDN/TBST



Immunocytochemistry/ Immunofluorescence - Anti-SV40 T-antigen antibody [EPR22694-148] (ab234426)

Immunofluorescent analysis of 4% paraformaldehyde-fixed, 0.1% Triton X-100 permeabilized HEK-293T (human embryonic kidney epithelial cell) cells labeling SV40 T-antigen with ab234426 at 1/50 dilution, followed by an AlexaFluor<sup>®</sup>488 Goat anti-Rabbit secondary (**ab150077**) (Green) at 1/1000 dilution. Confocal image showing nuclear and weak cytoplasmic staining in HEK-293T cells. The nuclear counterstain is DAPI (Blue). Tubulin was stained using an Anti-alpha Tubulin antibody [DM1A] - Microtubule Marker (Alexa Fluor<sup>®</sup> 594) (Red) at 1/200 dilution.

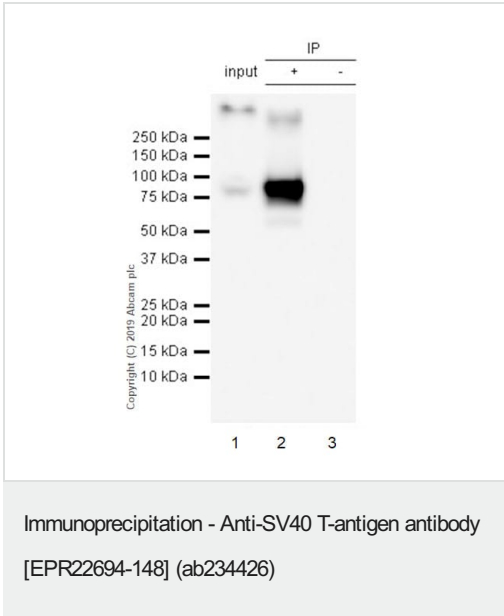
**Negative control:** HEK-293(PMID: 15175262).



Flow Cytometry (Intracellular) - Anti-SV40 T-antigen antibody [EPR22694-148] (ab234426)

Intracellular flow cytometric analysis of 4% paraformaldehyde-fixed HEK-293 (human embryonic kidney epithelial cell, Left) / 293T (SV40 transfected human embryonic kidney epithelial cell, Right) cells labeling SV40 T-antigen with ab234426 at 1/500 dilution (red), compared with a Rabbit monoclonal IgG isotype control (**ab172730**, Black) and an unlabeled control (cells without incubation with primary antibody and secondary antibody) (blue). Goat anti rabbit IgG (Alexa Fluor<sup>®</sup> 488, **ab150077**) was used as the secondary antibody at 1/2000 dilution.

**Negative control:** HEK-293.



SV40 T-antigen was immunoprecipitated from 0.35 mg HEK-293T (SV40 transfected human embryonic kidney epithelial cell) whole cell lysate with ab234426 at 1/30 dilution. Western blot was performed on the immunoprecipitate using ab234426 at 1/1000 dilution. VeriBlot for IP Detection Reagent (HRP) ([ab131366](#)) was used as the secondary antibody at 1/5000 dilution.

**Lane 1:** HEK-293T (SV40 transfected) whole cell lysate 10 µg (input).

**Lane 2:** ab234426 IP in HEK-293T (SV40 transfected) whole cell lysate.

**Lane 3:** Rabbit monoclonal IgG ([ab172730](#)) instead of ab234426 in HEK-293T whole cell lysate.

Blocking and dilution buffer and concentration: 5% NFD/MTBST.

Exposure time: 3 seconds.

Why choose a recombinant antibody?

**Research with confidence**  
Consistent and reproducible results

**Long-term and scalable supply**  
Recombinant technology

**Success from the first experiment**  
Confirmed specificity

**Ethical standards compliant**  
Animal-free production

Anti-SV40 T-antigen antibody [EPR22694-148] (ab234426)

**Please note:** All products are "FOR RESEARCH USE ONLY. NOT FOR USE IN DIAGNOSTIC PROCEDURES"

**Our Abpromise to you: Quality guaranteed and expert technical support**

- Replacement or refund for products not performing as stated on the datasheet

- Valid for 12 months from date of delivery
- Response to your inquiry within 24 hours
- We provide support in Chinese, English, French, German, Japanese and Spanish
- Extensive multi-media technical resources to help you
- We investigate all quality concerns to ensure our products perform to the highest standards

If the product does not perform as described on this datasheet, we will offer a refund or replacement. For full details of the Abpromise, please visit <https://www.abcam.co.jp/abpromise> or contact our technical team.

### **Terms and conditions**

---

- Guarantee only valid for products bought direct from Abcam or one of our authorized distributors