

Anti-SUZ12 antibody ab12073

KO 評価済

★★★★☆ [27 Abreviews](#) [145 References](#) [画像数 5](#)

製品の概要

製品名	Anti-SUZ12 antibody
製品の詳細	Rabbit polyclonal to SUZ12
由来種	Rabbit
アプリケーション	適用あり: IP, ChIP, ChIP/Chip, IHC-P, WB, RIP
種交差性	交差種: Mouse, Human, Common marmoset
免疫原	Synthetic peptide corresponding to Human SUZ12 aa 700 to the C-terminus conjugated to keyhole limpet haemocyanin. (Peptide available as ab12389)

特記事項

The Life Science industry has been in the grips of a reproducibility crisis for a number of years. Abcam is leading the way in addressing this with our range of recombinant monoclonal antibodies and knockout edited cell lines for gold-standard validation. Please check that this product meets your needs before purchasing.

If you have any questions, special requirements or concerns, please send us an inquiry and/or contact our Support team ahead of purchase. Recommended alternatives for this product can be found below, along with publications, customer reviews and Q&As

製品の特性

製品の状態	Liquid
保存方法	Shipped at 4°C. Store at +4°C short term (1-2 weeks). Upon delivery aliquot. Store at -20°C or -80°C. Avoid freeze / thaw cycle.
バッファー	pH: 7.40 Preservative: 0.02% Sodium azide Constituent: PBS
精製度	Batches of this product that have a concentration < 1mg/ml may have BSA added as a stabilising agent. If you would like information about the formulation of a specific lot, please contact our scientific support team who will be happy to help. Immunogen affinity purified
ポリ/モノ	ポリクローナル

アプリケーション

The Abpromise guarantee **Abpromise保証は、次のテスト済みアプリケーションにおけるab12073の使用に適用されます**

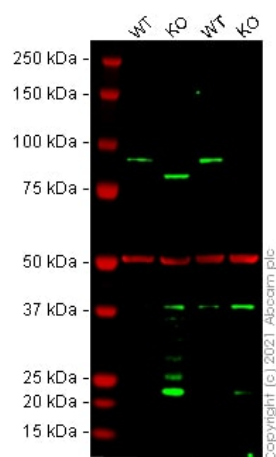
アプリケーションノートには、推奨の開始希釈率がありますが、適切な希釈率につきましてはご検討ください。

アプリケーション	Abreviews	特記事項
IP	★★★★★ (3)	Use at an assay dependent concentration.
ChIP	★★★★☆ (9)	Use at an assay dependent concentration.
ChIP/Chip	★★★★★ (1)	Use at an assay dependent concentration.
IHC-P	★★★★★ (2)	Use at an assay dependent concentration.
WB	★★★★☆ (9)	Use a concentration of 1 - 5 µg/ml. Detects a band of approximately 95 kDa (predicted molecular weight: 83 kDa).
RIP	★★★★☆ (2)	Use at an assay dependent concentration. PubMed: 19571010

ターゲット情報

機能	Polycomb group (PcG) protein. Component of the PRC2/EED-EZH2 complex, which methylates 'Lys-9' (H3K9me) and 'Lys-27' (H3K27me) of histone H3, leading to transcriptional repression of the affected target gene. The PRC2/EED-EZH2 complex may also serve as a recruiting platform for DNA methyltransferases, thereby linking two epigenetic repression systems. Genes repressed by the PRC2/EED-EZH2 complex include HOXC8, HOXA9, MYT1 and CDKN2A.
組織特異性	Overexpressed in breast and colon cancer.
関連疾患	Note=A chromosomal aberration involving SUZ12 may be a cause of endometrial stromal tumors. Translocation t(7;17)(p15;q21) with JAZF1. The translocation generates the JAZF1-SUZ12 oncogene consisting of the N-terminus part of JAZF1 and the C-terminus part of SUZ12. It is frequently found in all cases of endometrial stromal tumors, except in endometrial stromal sarcomas, where it is rarer.
配列類似性	Belongs to the VEFS (VRN2-EMF2-FIS2-SU(Z)12) family. Contains 1 C2H2-type zinc finger.
発生段階	Expressed at low levels in quiescent cells. Expression rises at the G1/S phase transition.
細胞内局在	Nucleus.

画像



Western blot - Anti-SUZ12 antibody (ab12073)

All lanes : Anti-SUZ12 antibody (ab12073) at 1 µg/ml

Lane 1 : Wild-type HeLa cell lysate

Lane 2 : SUZ12 knockout HeLa cell lysate

Lane 3 : Wild-type HAP1 cell lysate

Lane 4 : SUZ12 knockout HAP1 cell lysate

Lysates/proteins at 20 µg per lane.

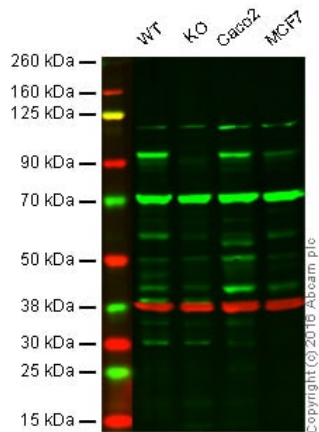
Performed under reducing conditions.

Predicted band size: 83 kDa

Observed band size: 95 kDa

Lanes 1 - 4: Merged signal (red and green). Green - ab12073 observed at 95 kDa. Red - loading control, **ab7291** (Mouse anti-Alpha Tubulin [DM1A]) observed at 55 kDa.

ab12073 was shown to react with SUZ12 in western blot. The band observed in the SUZ12 knockout cell line **ab264983** (SUZ12 knockout cell lysate **ab257721**) lane below 95 kDa is likely to represent a truncated form. This has not been investigated further. Membranes were blocked in 3 % milk in TBS-T (0.1 % Tween®) before incubation with ab12073 and **ab7291** (Mouse anti-Alpha Tubulin [DM1A]) overnight at 4 °C at 1 µg/ml and a 1 in 20000 dilution respectively. Blots were incubated with Goat anti-Rabbit IgG H&L (IRDye® 800CW) preabsorbed (**ab216773**) and Goat anti-Mouse IgG H&L (IRDye® 680RD) preabsorbed (**ab216776**) secondary antibodies at 1 in 20000 dilution for 1 h at room temperature before imaging.



Western blot - Anti-SUZ12 antibody (ab12073)

Lane 1: Wild-type HAP1 cell lysate (20 µg)

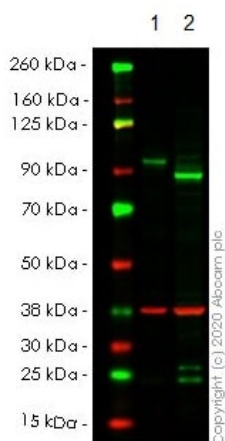
Lane 2: SUZ12 knockout HAP1 cell lysate (20 µg)

Lane 3: Caco2 cell lysate (20 µg)

Lane 4: MCF7 cell lysate (20 µg)

Lanes 1 - 4: Merged signal (red and green). Green - ab12073 observed at 95 kDa. Red - loading control, **ab8245**, observed at 37 kDa.

ab12073 was shown to specifically recognize SUZ12 in wild-type HAP1 cells along with additional cross-reactive bands. No band was observed when SUZ12 knockout samples were used. Wild-type and SUZ12 knockout samples were subjected to SDS-PAGE. ab12073 and **ab8245** (loading control to GAPDH) were diluted to 1 µg/mL and 1/10,000 respectively and incubated overnight at 4°C. Blots were developed with Goat anti-Rabbit IgG H&L (IRDye® 800CW) preadsorbed (**ab216773**) and Goat anti-Mouse IgG H&L (IRDye® 680RD) preadsorbed (**ab216776**) secondary antibodies at 1/10 000 dilution for 1 h at room temperature before imaging.



Western blot - Anti-SUZ12 antibody (ab12073)

All lanes : Anti-SUZ12 antibody (ab12073)

Lane 1 : Wild-type HeLa cell lysate

Lane 2 : SUZ12 CRISPR/Cas9 edited HeLa cell lysate

Lysates/proteins at 20 µg per lane.

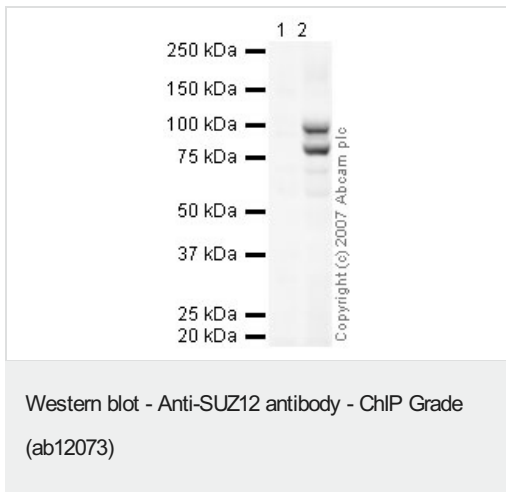
Performed under reducing conditions.

Predicted band size: 83 kDa

Observed band size: 95 kDa

Lanes 1-2: Merged signal (red and green). Green - ab12073 observed at 95 kDa. Red - Anti-GAPDH antibody [6C5] - Loading Control (**ab8245**) observed at 37 kDa.

ab12073 was shown to react with SUZ12 in wild-type HeLa cells in western blot. The band observed in CRISPR/Cas9 edited cell line **ab264983** (CRISPR/Cas9 edited cell lysate **ab257721**) lane below 95kDa may represent truncated forms and cleaved fragments. This has not been investigated further. Wild-type HeLa and SUZ12 CRISPR/Cas9 edited HeLa cell lysates were subjected to SDS-PAGE. Membrane was blocked for 1 hour at room temperature in 0.1% TBST with 3% non-fat dried milk. ab12073 and Anti-GAPDH antibody [6C5] - Loading Control (**ab8245**) were incubated overnight at 4°C at a 1 µg/ml and a 1 in 20000 dilution respectively. Blots were developed with Goat anti-Rabbit IgG H&L (IRDye®800CW) preadsorbed (**ab216773**) and Goat anti-Mouse IgG H&L (IRDye®680RD) preadsorbed (**ab216776**) secondary antibodies at 1 in 20000 dilution for 1 hour at room temperature before imaging.



All lanes : Anti-SUZ12 antibody (ab12073) at 1 µg/ml

Lane 1 : untransfected 293T cell lysate

Lane 2 : 293T cells transfected with 5ug HA-Suz12

Lysates/proteins at 20 µg per lane.

Secondary

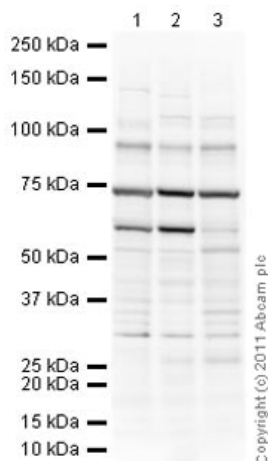
All lanes : Goat polyclonal to Rabbit IgG H&L (HRP) (Dako) at 1/2000 dilution

Performed under reducing conditions.

Predicted band size: 83 kDa

Observed band size: 95 kDa

Additional bands at: 76 kDa. We are unsure as to the identity of these extra bands.



Western blot - Anti-SUZ12 antibody - ChIP Grade
(ab12073)

All lanes : Anti-SUZ12 antibody (ab12073) at 1 µg/ml

Lane 1 : SW480 (Human colon adenocarcinoma cell line) Whole Cell Lysate

Lane 2 : MCF7 (Human breast adenocarcinoma cell line) Whole Cell Lysate

Lane 3 : Caco 2 (Human colonic carcinoma cell line) Whole Cell Lysate

Lysates/proteins at 20 µg per lane.

Secondary

All lanes : Goat Anti-Rabbit IgG H&L (HRP) preadsorbed
([ab97080](#)) at 1/5000 dilution

Developed using the ECL technique.

Performed under reducing conditions.

Predicted band size: 83 kDa

Observed band size: 95 kDa

Additional bands at: 30 kDa, 53 kDa, 60 kDa, 75 kDa. We are unsure as to the identity of these extra bands.

Exposure time: 4 minutes

Please note: All products are "FOR RESEARCH USE ONLY. NOT FOR USE IN DIAGNOSTIC PROCEDURES"

Our Abpromise to you: Quality guaranteed and expert technical support

- Replacement or refund for products not performing as stated on the datasheet
- Valid for 12 months from date of delivery
- Response to your inquiry within 24 hours

- We provide support in Chinese, English, French, German, Japanese and Spanish
- Extensive multi-media technical resources to help you
- We investigate all quality concerns to ensure our products perform to the highest standards

If the product does not perform as described on this datasheet, we will offer a refund or replacement. For full details of the Abpromise, please visit <https://www.abcam.co.jp/abpromise> or contact our technical team.

Terms and conditions

- Guarantee only valid for products bought direct from Abcam or one of our authorized distributors