

# Anti-Survivin DEx3 antibody ab3731

**7 References** [画像数 1](#)

### 製品の概要

製品名	Anti-Survivin DEx3 antibody
製品の詳細	Rabbit polyclonal to Survivin DEx3
由来種	Rabbit
特異性	This antibody has been tested in Western blotting against equal loadings of purified wild type survivin, 2B and DEx3. When used at 1/250, it detects a single clean (but weak) band of the appropriate size for DEx3, but no band is detected with wild type survivin or 2B. We have not succeeded in detecting endogenous Survivin DEx3 using this antibody (Survivin DEx3 is expressed at very low levels). This antibody has been used successfully however, to detect overexpressed Survivin DEx3 in whole cell extracts.
アプリケーション	<b>適用あり:</b> ICC/IF
種交差性	<b>交差種:</b> Human
免疫原	Synthetic peptide. This information is proprietary to Abcam and/or its suppliers.
ポジティブ・コントロール	This antibody gave a positive result in HeLa cell line in ICC/IF
特記事項	<p>This antibody should be aliquoted to reduce freeze-thaw cycles as it loses performance quickly after multiple freeze-thaws.</p> <p>The Life Science industry has been in the grips of a reproducibility crisis for a number of years. Abcam is leading the way in addressing this with our range of recombinant monoclonal antibodies and knockout edited cell lines for gold-standard validation. Please check that this product meets your needs before purchasing.</p> <p>If you have any questions, special requirements or concerns, please send us an inquiry and/or contact our Support team ahead of purchase. Recommended alternatives for this product can be found below, along with publications, customer reviews and Q&amp;As</p>

### 製品の特性

製品の状態	Liquid
保存方法	Shipped at 4°C. Store at +4°C short term (1-2 weeks). Upon delivery aliquot. Store at -20°C or -80°C. Avoid freeze / thaw cycle.
バッファー	<p>pH: 7.40</p> <p>Preservative: 0.02% Sodium azide</p> <p>Constituent: PBS</p>

Batches of this product that have a concentration < 1mg/ml may have BSA added as a stabilising agent. If you would like information about the formulation of a specific lot, please contact our scientific support team who will be happy to help.

精製度	Immunogen affinity purified
ポリ/モノ	ポリクローナル
アイソタイプ	IgG

## アプリケーション

**The Abpromise guarantee**      **Abpromise保証は、**次のテスト済みアプリケーションにおけるab3731の使用に適用されます  
アプリケーションノートには、推奨の開始希釈率がありますが、適切な希釈率につきましてはご検討ください。

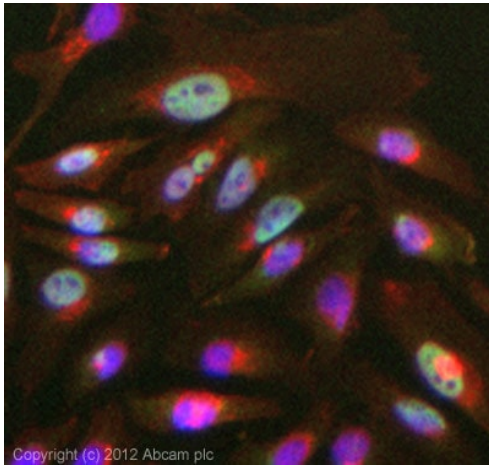
アプリケーション	Abreviews	特記事項
ICC/IF		Use a concentration of 5 µg/ml.

## ターゲット情報

**関連性**      Survivin is expressed in G2/M phase in a cycle regulated manner. At the beginning of mitosis, survivin associates with mitotic spindle microtubules, this is essential for survivin's anti-apoptosis function. Survivin may counteract a default induction of apoptosis in G2 / M phase. Survivin over-expression in cancer may overcome this apoptotic checkpoint. Survivin DEx3 (lacking exon 3) and survivin-2B (retaining a part of intron 2 as a cryptic exon) are isoforms of survivin that behave differently to survivin. Skipping of exon 3 in survivin-Ex3 results in a modification of the BIR domain, followed by an additional frame shift in exon 4. In consequence, the open reading frame of Survivin DEx3 ends in the 3' untranslated region of survivin at position 581 and generates a novel 63 amino acids-long COOH-terminal tail in survivin-Ex3 coded by 87 nucleotides of exon 4 and 103 nucleotides of the original 3' untranslated region. See Mahotka et al. 1999 for more details.

**細胞内局在**      Cytoplasmic and Nuclear

## 画像



Immunocytochemistry/ Immunofluorescence - Anti-Survivin DEx3 antibody (ab3731)

ICC/IF image of ab3731 stained HeLa cells. The cells were 4% formaldehyde fixed (10 min) and then incubated in 1%BSA / 10% normal goat serum / 0.3M glycine in 0.1% PBS-Tween for 1h to permeabilise the cells and block non-specific protein-protein interactions. The cells were then incubated with the antibody (ab3731, 5µg/ml) overnight at +4°C. The secondary antibody (green) was **ab96899**, DyLight® 488 goat anti-rabbit IgG (H+L) used at a 1/250 dilution for 1h. Alexa Fluor® 594 WGA was used to label plasma membranes (red) at a 1/200 dilution for 1h. DAPI was used to stain the cell nuclei (blue) at a concentration of 1.43µM.

**Please note:** All products are "FOR RESEARCH USE ONLY. NOT FOR USE IN DIAGNOSTIC PROCEDURES"

### Our Abpromise to you: Quality guaranteed and expert technical support

- Replacement or refund for products not performing as stated on the datasheet
- Valid for 12 months from date of delivery
- Response to your inquiry within 24 hours
- We provide support in Chinese, English, French, German, Japanese and Spanish
- Extensive multi-media technical resources to help you
- We investigate all quality concerns to ensure our products perform to the highest standards

If the product does not perform as described on this datasheet, we will offer a refund or replacement. For full details of the Abpromise, please visit <https://www.abcam.co.jp/abpromise> or contact our technical team.

### Terms and conditions

- Guarantee only valid for products bought direct from Abcam or one of our authorized distributors