

Anti-Surf1 antibody [21H2BG4] ab110256

4 References [画像数 2](#)

製品の概要

製品名	Anti-Surf1 antibody [21H2BG4]
製品の詳細	Mouse monoclonal [21H2BG4] to Surf1
由来種	Mouse
アプリケーション	適用あり: WB, Flow Cyt
種交差性	交差種: Human
免疫原	Recombinant full length protein. This information is considered to be commercially sensitive.
特記事項	<p>This antibody clone is manufactured by Abcam. If you require a custom buffer formulation or conjugation for your experiments, please contact orders@abcam.com.</p> <p>The Life Science industry has been in the grips of a reproducibility crisis for a number of years. Abcam is leading the way in addressing this with our range of recombinant monoclonal antibodies and knockout edited cell lines for gold-standard validation. Please check that this product meets your needs before purchasing.</p> <p>If you have any questions, special requirements or concerns, please send us an inquiry and/or contact our Support team ahead of purchase. Recommended alternatives for this product can be found below, along with publications, customer reviews and Q&As</p> <p>Product was previously marketed under the MitoSciences sub-brand.</p>

製品の特性

製品の状態	Liquid
保存方法	Shipped at 4°C. Store at +4°C. Do Not Freeze.
バッファー	<p>pH: 7.5</p> <p>Preservative: 0.02% Sodium azide</p> <p>Constituent: HEPES buffered saline</p>
特記事項 (精製)	Near homogeneity as judged by SDS-PAGE. The antibody was produced in vitro using hybridomas grown in serum-free medium, and then purified by biochemical fractionation.
ポリ/モノ	モノクローナル
クローン名	21H2BG4
アイソタイプ	IgG1

アプリケーション

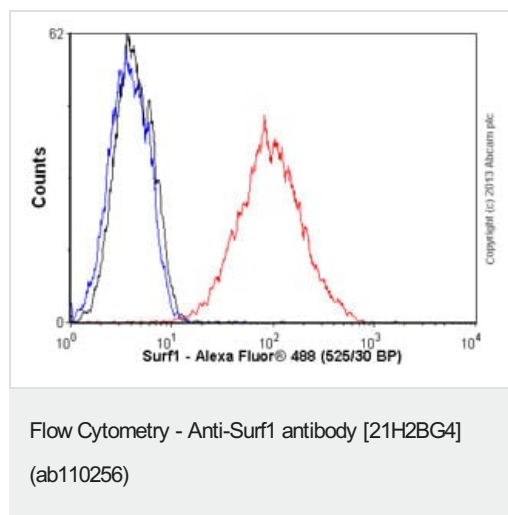
The Abpromise guarantee Abpromise保証は、次のテスト済みアプリケーションにおけるab110256の使用に適用されます
 アプリケーションノートには、推奨の開始希釈率がありますが、適切な希釈率につきましてはご検討ください。

アプリケーション	Abreviews	特記事項
WB		Use at an assay dependent concentration. Predicted molecular weight: 33 kDa.
Flow Cyt		Use 0.1µg for 10 ⁶ cells. <u>ab170190</u> - Mouse monoclonal IgG1, is suitable for use as an isotype control with this antibody.

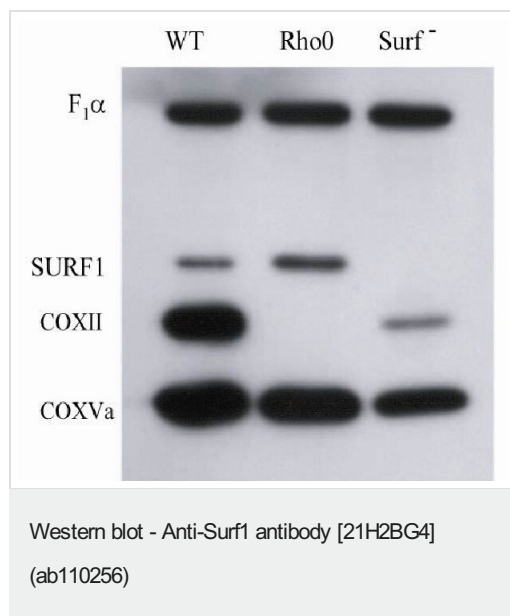
ターゲット情報

機能	Probably involved in the biogenesis of the COX complex.
関連疾患	Defects in SURF1 are a cause of Leigh syndrome (LS) [MIM:256000]. LS is a severe neurological disorder characterized by bilaterally symmetrical necrotic lesions in subcortical brain regions that is commonly associated with systemic cytochrome c oxidase (COX) deficiency.
配列類似性	Belongs to the SURF1 family.
細胞内局在	Mitochondrion inner membrane.

画像



Overlay histogram showing HepG2 cells stained with ab110256 (red line). The cells were fixed with 80% methanol (5 min) and then permeabilized with 0.1% PBS-Tween for 20 min. The cells were then incubated in 1x PBS / 10% normal goat serum / 0.3M glycine to block non-specific protein-protein interactions followed by the antibody (ab110256, 0.1µg/1x10⁶ cells) for 30 min at 22°C. The secondary antibody used was Alexa Fluor® 488 goat anti-mouse IgG (H&L) (ab150113) at 1/2000 dilution for 30 min at 22°C. Isotype control antibody (black line) was mouse IgG1 [ICIGG1] (ab91353, 1µg/1x10⁶ cells) used under the same conditions. Unlabelled sample (blue line) was also used as a control. Acquisition of >5,000 events were collected using a 20mW Argon ion laser (488nm) and 525/30 bandpass filter. This antibody gave a positive signal in HepG2 cells fixed with 4% paraformaldehyde (10 min)/permeabilized with 0.1% PBS-Tween for 20 min used under the same conditions.



Complex IV assembly factor SURF1 identification. This mAb can be used to verify the presence of Complex IV assembly factor SURF1. Blotted alongside are mAbs against the ATP synthase subunit F1 α subunit, an abundant mitochondrial protein acting as a control for gel loading. To indicate the assembly state of the cytochrome c oxidase, mAbs against the nuclear cytochrome c oxidase subunit COXVa and the mitochondrially encoded COXII subunit are also blotted in this Figure.

Please note: All products are "FOR RESEARCH USE ONLY. NOT FOR USE IN DIAGNOSTIC PROCEDURES"

Our Abpromise to you: Quality guaranteed and expert technical support

- Replacement or refund for products not performing as stated on the datasheet
- Valid for 12 months from date of delivery
- Response to your inquiry within 24 hours
- We provide support in Chinese, English, French, German, Japanese and Spanish
- Extensive multi-media technical resources to help you
- We investigate all quality concerns to ensure our products perform to the highest standards

If the product does not perform as described on this datasheet, we will offer a refund or replacement. For full details of the Abpromise, please visit <https://www.abcam.co.jp/abpromise> or contact our technical team.

Terms and conditions

- Guarantee only valid for products bought direct from Abcam or one of our authorized distributors