

# Anti-SUCLA2 antibody [EPR14924] ab202582

リコンビナント **RabMAb**

## 2 References [画像数 9](#)

### 製品の概要

製品名	Anti-SUCLA2 antibody [EPR14924]
製品の詳細	Rabbit monoclonal [EPR14924] to SUCLA2
由来種	Rabbit
アプリケーション	<b>適用あり:</b> Flow Cyt (Intra), ICC/IF, IHC-P, WB
種交差性	<b>交差種:</b> Mouse, Rat, Human
免疫原	Synthetic peptide. This information is proprietary to Abcam and/or its suppliers.
ポジティブ・コントロール	WB: 293, HeLa, HepG2, C6, RAW 264.7, PC-12 and NIH/3T3 whole cell lysates; mouse and rat brain, heart, kidney and spleen lysates. IHC-P: human cervix carcinoma, mouse cardiac muscle and rat pancreas tissues; ICC/IF: HeLa cells. Flow Cyt (intra): HeLa cells.
特記事項	<p>This product is a recombinant monoclonal antibody, which offers several advantages including:</p> <ul style="list-style-type: none"> <li>- High batch-to-batch consistency and reproducibility</li> <li>- Improved sensitivity and specificity</li> <li>- Long-term security of supply</li> <li>- Animal-free production</li> </ul> <p>For more information <a href="#">see here</a>.</p> <p>Our RabMAb<sup>®</sup> technology is a patented hybridoma-based technology for making rabbit monoclonal antibodies. For details on our patents, please refer to <a href="#">RabMAb<sup>®</sup> patents</a>.</p>

### 製品の特性

製品の状態	Liquid
保存方法	Shipped at 4°C. Store at +4°C short term (1-2 weeks). Upon delivery aliquot. Store at -20°C long term. Avoid freeze / thaw cycle.
バッファー	<p>pH: 7.2</p> <p>Preservative: 0.01% Sodium azide</p> <p>Constituents: 40% Glycerol (glycerin, glycerine), 59% PBS, 0.05% BSA</p>
精製度	Protein A purified
ポリ/モノ	モノクローナル
クローン名	EPR14924

アイソタイプIgG

アプリケーション

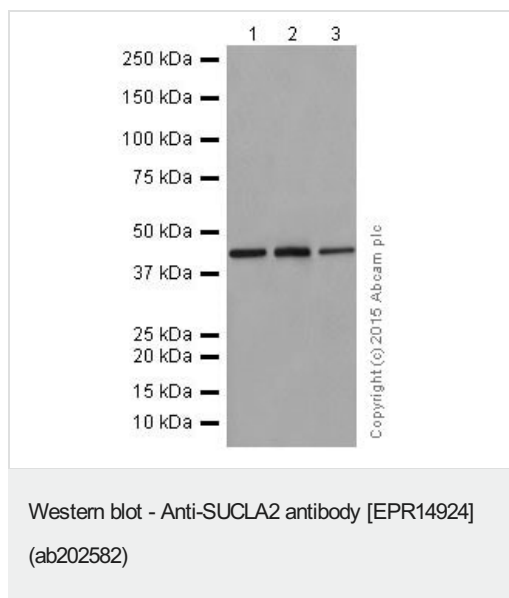
The Abpromise guarantee      Abpromise保証は、 次のテスト済みアプリケーションにおけるab202582の使用に適用されます  
アプリケーションノートには、推奨の開始希釈率がありますが、適切な希釈率につきましてはご検討ください。

アプリケーション	Abreviews	特記事項
Flow Cyt (Intra)		1/200.
ICC/IF		1/1800.
IHC-P		1/1800. Perform heat mediated antigen retrieval with Tris/EDTA buffer pH 9.0 before commencing with IHC staining protocol.
WB		1/1000. Detects a band of approximately 43 kDa (predicted molecular weight: 50 kDa).

ターゲット情報

機能	Catalyzes the ATP-dependent ligation of succinate and CoA to form succinyl-CoA.
組織特異性	Widely expressed. Not expressed in liver and lung.
パスウェイ	Carbohydrate metabolism; tricarboxylic acid cycle; succinate from succinyl-CoA (ligase route): step 1/1.
関連疾患	Mitochondrial DNA depletion syndrome 5
配列類似性	Belongs to the succinate/malate CoA ligase beta subunit family. Contains 1 ATP-grasp domain.
細胞内局在	Mitochondrion.

画像



**All lanes :** Anti-SUCLA2 antibody [EPR14924] (ab202582) at 1/1000 dilution

**Lane 1 :** 293 (Human epithelial cells from embryonic kidney) whole cell lysate

**Lane 2 :** HeLa (Human epithelial cells from cervix adenocarcinoma) whole cell lysate

**Lane 3 :** HepG2 (Human liver hepatocellular carcinoma) whole cell lysate

Lysates/proteins at 10 µg per lane.

### Secondary

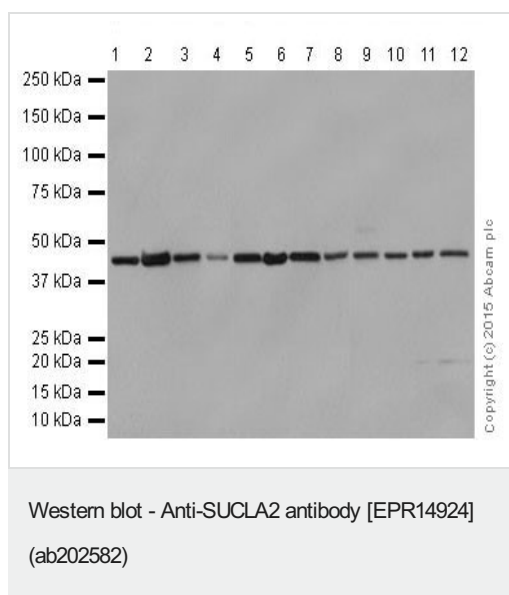
**All lanes :** Goat Anti-Rabbit IgG, (H+L), Peroxidase conjugated at 1/1000 dilution

**Predicted band size:** 50 kDa

**Observed band size:** 43 kDa

**Exposure time:** 1 minute

Blocking/Dilution buffer: 5% NFDM/TBST.



**All lanes :** Anti-SUCLA2 antibody [EPR14924] (ab202582) at 1/1000 dilution

**Lane 1 :** Mouse brain lysate

**Lane 2 :** Mouse heart lysate

**Lane 3 :** Mouse kidney lysate

**Lane 4 :** Mouse spleen lysate

**Lane 5 :** Rat brain lysate

**Lane 6 :** Rat heart lysate

**Lane 7 :** Rat kidney lysate

**Lane 8 :** Rat spleen lysate

**Lane 9 :** C6 (Rat glial tumor cells) whole cell lysate

**Lane 10 :** RAW 264.7 (Mouse macrophage cells transformed with Abelson murine leukemia virus) whole cell lysate

**Lane 11 :** PC-12 (Rat adrenal gland pheochromocytoma) whole cell lysate

**Lane 12 :** NIH/3T3 (Mouse embryo fibroblast cells) whole cell lysate

Lysates/proteins at 10 µg per lane.

## Secondary

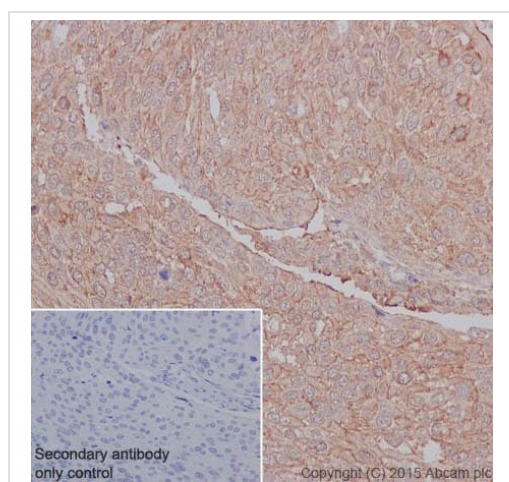
**All lanes :** Goat Anti-Rabbit IgG, (H+L), Peroxidase conjugated at 1/1000 dilution

**Predicted band size:** 50 kDa

**Observed band size:** 43 kDa

**Exposure time:** 15 seconds

Blocking/Dilution buffer: 5% NFDM/TBST.

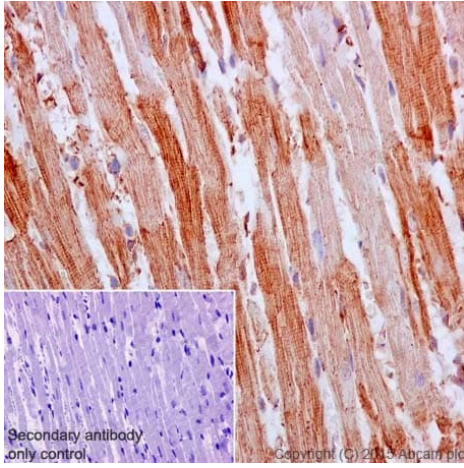


Immunohistochemical analysis of paraffin-embedded Human cervix carcinoma tissue labeling SUCLA2 with ab202582 at 1/1800 dilution, followed by Goat Anti-Rabbit IgG H&L (HRP) (**ab97051**) at 1/500 dilution. Cytoplasmic staining on Human cervix carcinoma tissue is observed. Counter stained with Hematoxylin.

Secondary antibody only control: Used PBS instead of primary antibody, secondary antibody is Goat Anti-Rabbit IgG H&L (HRP) (**ab97051**) at 1/500 dilution.

Perform heat mediated antigen retrieval with Tris/EDTA buffer pH 9.0 before commencing with IHC staining protocol.

Immunohistochemistry (Formalin/PFA-fixed paraffin-embedded sections) - Anti-SUCLA2 antibody [EPR14924] (ab202582)

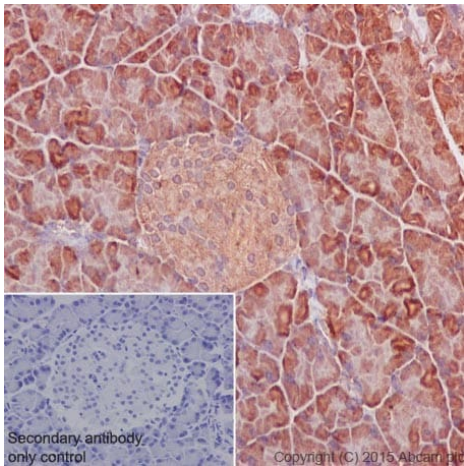


Immunohistochemistry (Formalin/PFA-fixed paraffin-embedded sections) - Anti-SUCLA2 antibody [EPR14924] (ab202582)

Immunohistochemical analysis of paraffin-embedded Mouse cardiac muscle tissue labeling SUCLA2 with ab202582 at 1/1800 dilution, followed by Goat Anti-Rabbit IgG H&L (HRP) ([ab97051](#)) at 1/500 dilution. Cytoplasmic staining on mouse cardiac muscle tissue is observed. Counter stained with Hematoxylin.

Secondary antibody only control: Used PBS instead of primary antibody, secondary antibody is Goat Anti-Rabbit IgG H&L (HRP) ([ab97051](#)) at 1/500 dilution.

Perform heat mediated antigen retrieval with Tris/EDTA buffer pH 9.0 before commencing with IHC staining protocol.

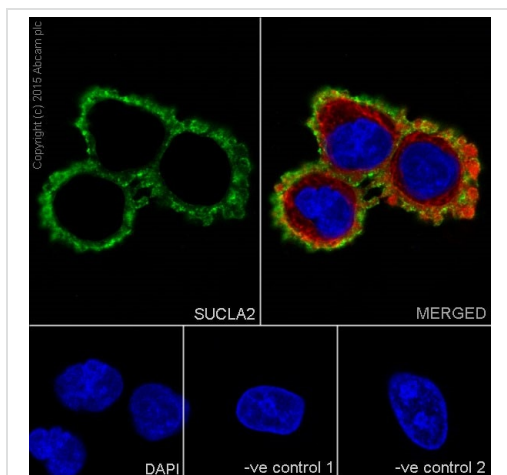


Immunohistochemistry (Formalin/PFA-fixed paraffin-embedded sections) - Anti-SUCLA2 antibody [EPR14924] (ab202582)

Immunohistochemical analysis of paraffin-embedded rat pancreas tissue labeling SUCLA2 with ab202582 at 1/1800 dilution, followed by Goat Anti-Rabbit IgG H&L (HRP) ([ab97051](#)) at 1/500 dilution. Cytoplasmic staining on rat pancreas tissue is observed. Counter stained with Hematoxylin.

Secondary antibody only control: Used PBS instead of primary antibody, secondary antibody is Goat Anti-Rabbit IgG H&L (HRP) ([ab97051](#)) at 1/500 dilution.

Perform heat mediated antigen retrieval with Tris/EDTA buffer pH 9.0 before commencing with IHC staining protocol.

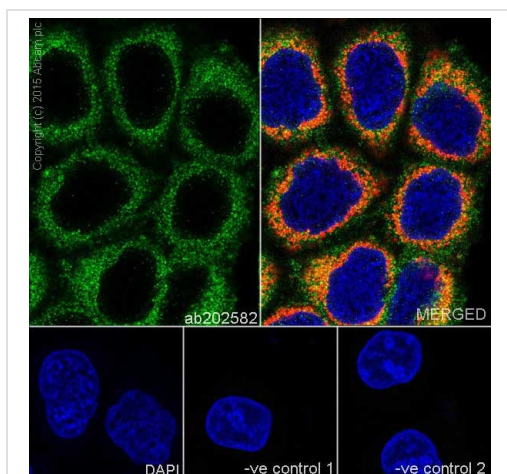


Immunocytochemistry/ Immunofluorescence - Anti-SUCLA2 antibody [EPR14924] (ab202582)

Immunofluorescent analysis of 100% methanol-fixed, 0.1% Triton X-100 permeabilized HeLa (Human epithelial cells from cervix adenocarcinoma) cells labeling SUCLA2 with ab202582 at 1/1800 dilution, followed by Goat Anti-Rabbit IgG (Alexa Fluor® 488) (**ab150077**) secondary antibody at 1/500 dilution (green). The nuclear counter stain is DAPI (blue). Tubulin is detected with **ab7291** (Anti-Tubulin mouse MAb) at 1/1000 dilution and **ab150120** (AlexaFluor®594 Goat Anti-Mouse secondary) at 1/500 dilution (red).

The negative controls are as follows:

-ve control 1: ab202582 at 1/1800 dilution followed by **ab150120** (AlexaFluor®594 Goat Anti-Mouse secondary) at 1/500 dilution.  
 -ve control 2: **ab7291** (Anti-Tubulin mouse MAb) at 1/1000 dilution followed by **ab150077** (Alexa Fluor®488 Goat Anti-Rabbit IgG H&L) at 1/500 dilution.



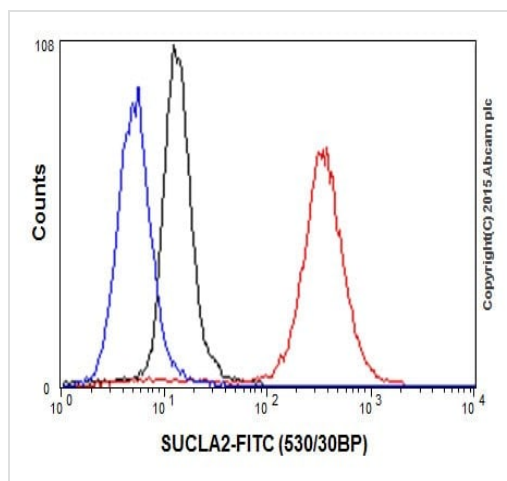
Immunocytochemistry/ Immunofluorescence - Anti-SUCLA2 antibody [EPR14924] (ab202582)

Immunofluorescent analysis of 100% methanol-fixed, 0.1% Triton X-100 permeabilized HeLa (Human epithelial cells from cervix adenocarcinoma) cells labeling SUCLA2 with ab202582 at 1/1800 dilution, followed by Goat Anti-Rabbit IgG (Alexa Fluor® 488) (**ab150077**) secondary antibody at 1/500 dilution (green). Confocal image showing cytoplasm staining on HeLa cell line. The nuclear counter stain is DAPI (blue). COX IV is detected with **ab33985** (anti-COX IV mouse mAb) at 1/1000 dilution and **ab150120** (AlexaFluor®594 Goat Anti-Mouse secondary) at 1/500 dilution (red).

The negative controls are as follows:

-ve control 1: ab202582 at 1/1800 dilution followed by **ab150120** (AlexaFluor®594 Goat Anti-Mouse secondary) at 1/500 dilution.  
 -ve control 2: **ab33985** (Anti-COX IV mouse MAb) at 1/1000 dilution followed by **ab150077** (Alexa Fluor®488 Goat Anti-Rabbit IgG H&L) at 1/500 dilution.









Intracellular flow cytometric analysis of 4% paraformaldehyde-fixed HeLa (Human epithelial cells from cervix adenocarcinoma) cells labeling SUCLA2 with ab202582 at 1/200 dilution (red) compared with a rabbit monoclonal IgG isotype control (**ab172730**; black) and an unlabelled control (cells without incubation with primary antibody and secondary antibody; blue). Goat anti rabbit IgG (FITC) at 1/500 dilution was used as the secondary antibody.

Flow Cytometry (Intracellular) - Anti-SUCLA2 antibody [EPR14924] (ab202582)

Why choose a recombinant antibody?

 <p><b>Research with confidence</b> Consistent and reproducible results</p>	 <p><b>Long-term and scalable supply</b> Recombinant technology</p>
 <p><b>Success from the first experiment</b> Confirmed specificity</p>	 <p><b>Ethical standards compliant</b> Animal-free production</p>

Anti-SUCLA2 antibody [EPR14924] (ab202582)

**Please note:** All products are "FOR RESEARCH USE ONLY. NOT FOR USE IN DIAGNOSTIC PROCEDURES"

### Our Abpromise to you: Quality guaranteed and expert technical support

- Replacement or refund for products not performing as stated on the datasheet
- Valid for 12 months from date of delivery
- Response to your inquiry within 24 hours
- We provide support in Chinese, English, French, German, Japanese and Spanish
- Extensive multi-media technical resources to help you
- We investigate all quality concerns to ensure our products perform to the highest standards

If the product does not perform as described on this datasheet, we will offer a refund or replacement. For full details of the Abpromise, please visit <https://www.abcam.co.jp/abpromise> or contact our technical team.

## Terms and conditions

---

- Guarantee only valid for products bought direct from Abcam or one of our authorized distributors