




Anti-STUB1/CHIP antibody ab2917

★★★★★ [2 Abreviews](#) [14 References](#) [画像数 3](#)

製品の概要

製品名	Anti-STUB1/CHIP antibody
製品の詳細	Rabbit polyclonal to STUB1/CHIP
由来種	Rabbit
特異性	Detects human carboxyl terminus of hsc70-interacting protein (CHIP). Detects a band of approximately 35 kDa representing CHIP from COS-1 cells overexpressing the human gene including a non-specific band at 80kDa . A customer reported that in mouse cerebrum the antibody detects a band of 35kDa as well as two small non-specific at 44 and 70 kDa.
アプリケーション	適用あり: WB
種交差性	交差種: Mouse, Human 交差が予測される動物種: Chicken 
免疫原	Synthetic peptide corresponding to Human STUB1/CHIP aa 218-232. Sequence: VDEKRKKRDIPDYLC (Peptide available as ab4934) <div>  Run BLAST with  Run BLAST with </div>
ポジティブ・コントロール	WB: mouse brain, MCF-7 cells, transfected COS-1 cells
特記事項	<p>The Life Science industry has been in the grips of a reproducibility crisis for a number of years. Abcam is leading the way in addressing this with our range of recombinant monoclonal antibodies and knockout edited cell lines for gold-standard validation. Please check that this product meets your needs before purchasing.</p> <p>If you have any questions, special requirements or concerns, please send us an inquiry and/or contact our Support team ahead of purchase. Recommended alternatives for this product can be found below, along with publications, customer reviews and Q&As</p>

製品の特性

製品の状態	Liquid
保存方法	Shipped at 4°C. Store at +4°C short term (1-2 weeks). Upon delivery aliquot. Store at -20°C or -80°C. Avoid freeze / thaw cycle.
バッファー	Preservative: 0.05% Sodium azide

精製度	Constituents: 0.1% BSA, 99% PBS
一次抗体 備考	Immunogen affinity purified
	A recently identified protein, termed carboxyl terminus of hsc70-interacting protein (CHIP), has been shown to interact both with the constitutive form of hsc70 and the stress inducible form, hsp70. This novel 35 kDa cytoplasmic protein has been shown to be highly expressed in striated muscle in vivo. Additional studies have shown that this protein is expressed over a broad range of cultured tissues. Through immunoprecipitation experiments, CHIP has been shown to directly bind to the carboxyl terminus of hsc70 and hsp70 where it decreases ATPase activity and reduces overall chaperone efficiency. CHIP has also been identified as an important protein in the ubiquitin-proteasome system. CHIP contains a U-box domain and acts as an E3 ubiquitin-ligase in conjunction with hsc70 and hsp90.
ポリ/モノ	ポリクローナル
アイソタイプ	IgG

アプリケーション

The Abpromise guarantee **Abpromise保証は、次のテスト済みアプリケーションにおけるab2917の使用に適用されます**
 アプリケーションノートには、推奨の開始希釈率がありますが、適切な希釈率につきましてはご確認ください。

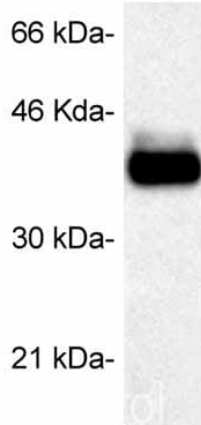
アプリケーション	Abreviews	特記事項
WB	★★★★★ (2)	Use at an assay dependent concentration. Predicted molecular weight: 35 kDa.

ターゲット情報

機能	E3 ubiquitin-protein ligase which targets misfolded chaperone substrates towards proteasomal degradation. Ubiquitinates NOS1 in concert with Hsp70 and Hsp40. Modulates the activity of several chaperone complexes, including Hsp70, Hsc70 and Hsp90. Mediates transfer of non-canonical short ubiquitin chains to HSPA8 that have no effect on HSPA8 degradation. Mediates polyubiquitination of DNA polymerase beta (POLB) at 'Lys-41', 'Lys-61' and 'Lys-81', thereby playing a role in base-excision repair: catalyzes polyubiquitination by amplifying the HUWE1/ARF-BP1-dependent monoubiquitination and leading to POLB-degradation by the proteasome. Mediates polyubiquitination of CYP3A4.
組織特異性	Highly expressed in skeletal muscle, heart, pancreas, brain and placenta. Detected in kidney, liver and lung.
パスウェイ	Protein modification; protein ubiquitination.
配列類似性	Contains 3 TPR repeats. Contains 1 U-box domain.
ドメイン	The TPR domain is essential for ubiquitination mediated by UBE2D1.
翻訳後修飾	Phosphorylated upon DNA damage, probably by ATM or ATR. Auto-ubiquitinated; mediated by UBE2D1 and UBE2D2.
細胞内局在	Cytoplasm.

画像

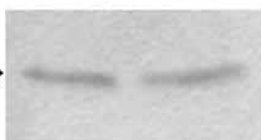
Fig.1



Western blot - Anti-STUB1/CHIP antibody (ab2917)

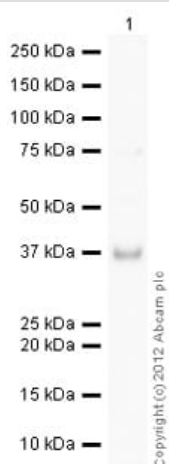
Western blot detection of transfected COS-1 cells expressing STUB1/CHIP using ab2917.

~35kD →



Western blot - Anti-STUB1/CHIP antibody (ab2917)

Western blot analysis of STUB1/CHIP was performed by loading 20ug of total protein extracted from the left hemisphere (Left lane) or right hemisphere (right lane) of a normal C57BL/6 mouse brain per well on an SDS-PAGE gel. Proteins were transferred to a membrane, blocked with 5% non-fat dry milk and probed with a STUB1/CHIP polyclonal antibody (**ab2915**) at a dilution of 1:1000, followed by a HRP-conjugated goat anti-rabbit IgG secondary antibody. Detection was performed using a chemiluminescent substrate.



Western blot - Anti-STUB1/CHIP antibody (ab2917)

Please note: All products are "FOR RESEARCH USE ONLY. NOT FOR USE IN DIAGNOSTIC PROCEDURES"

Our Abpromise to you: Quality guaranteed and expert technical support

- Replacement or refund for products not performing as stated on the datasheet
- Valid for 12 months from date of delivery
- Response to your inquiry within 24 hours
- We provide support in Chinese, English, French, German, Japanese and Spanish
- Extensive multi-media technical resources to help you
- We investigate all quality concerns to ensure our products perform to the highest standards

If the product does not perform as described on this datasheet, we will offer a refund or replacement. For full details of the Abpromise, please visit <https://www.abcam.co.jp/abpromise> or contact our technical team.

Terms and conditions

- Guarantee only valid for products bought direct from Abcam or one of our authorized distributors