


Anti-Stathmin 1 antibody [SP49], prediluted ab228139

リコンビナント **RabMAb**

画像数 15

製品の概要

製品名	Anti-Stathmin 1 antibody [SP49], prediluted
製品の詳細	Rabbit monoclonal [SP49] to Stathmin 1, prediluted
由来種	Rabbit
アプリケーション	適用あり: IHC-P
種交差性	交差種: Human 交差が予測される動物種: Mouse, Rat, Chicken, Cow, Dog, Pig 
免疫原	Synthetic peptide. This information is proprietary to Abcam and/or its suppliers.
ポジティブ・コントロール	IHC-P: Human tonsil, B-cell lymphoma, thymus, reactive lymph node, HK lymphoma, melanoma, cervical squamous cell carcinoma, breast ductal cell carcinoma, colon adenocarcinoma, ovarian adenocarcinoma, pancreatic adenocarcinoma, endometrium adenocarcinoma, stomach adenocarcinoma and bladder transitional cell carcinoma tissue.
特記事項	This product is FOR RESEARCH USE ONLY. For commercial use, please contact partnerships@abcam.com.

製品の特性

製品の状態	Liquid
保存方法	Shipped at 4°C. Store at +4°C. Do Not Freeze.
バッファー	pH: 7.60 Preservative: 0.1% Sodium azide Constituents: Tris buffered saline, 1% BSA
精製度	Protein A/G purified
特記事項(精製)	Purified from TCS by protein A/G.
ポリ/モノ	モノクローナル
クローン名	SP49
アイソタイプ	IgG

アプリケーション

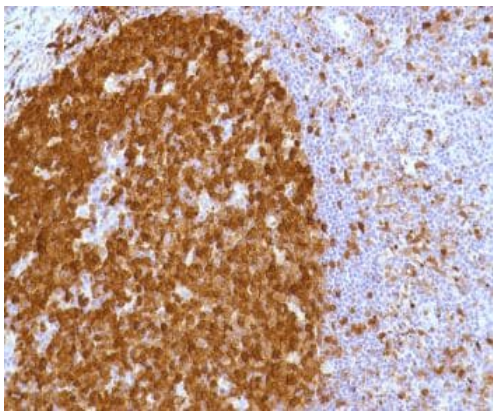
The Abpromise guarantee Abpromise保証は、 次のテスト済みアプリケーションにおけるab228139の使用に適用されます
アプリケーションノートには、推奨の開始希釈率がありますが、適切な希釈率につきましてはご確認ください。

アプリケーション	Abreviews	特記事項
IHC-P		1/1. Perform heat mediated antigen retrieval with citrate buffer pH 6 before commencing with IHC staining protocol. Pre-diluted / ready to use.

ターゲット情報

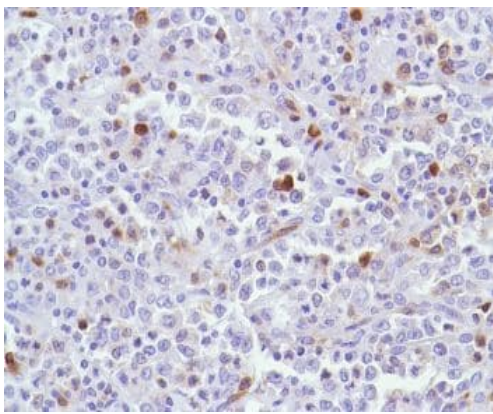
機能	Involved in the regulation of the microtubule (MT) filament system by destabilizing microtubules. Prevents assembly and promotes disassembly of microtubules. Phosphorylation at Ser-16 may be required for axon formation during neurogenesis. Involved in the control of the learned and innate fear.
組織特異性	Ubiquitous. Expression is strongest in fetal and adult brain, spinal cord, and cerebellum, followed by thymus, bone marrow, testis, and fetal liver. Expression is intermediate in colon, ovary, placenta, uterus, and trachea, and is readily detected at substantially lower levels in all other tissues examined. Lowest expression is found in adult liver. Present in much greater abundance in cells from patients with acute leukemia of different subtypes than in normal peripheral blood lymphocytes, non-leukemic proliferating lymphoid cells, bone marrow cells, or cells from patients with chronic lymphoid or myeloid leukemia.
配列類似性	Belongs to the stathmin family. Contains 1 SLD (stathmin-like) domain.
翻訳後修飾	Many different phosphorylated forms are observed depending on specific combinations among the sites which can be phosphorylated. MAPK is responsible for the phosphorylation of stathmin in response to NGF. Phosphorylation at Ser-16 seems to be required for neuron polarization (By similarity). Phosphorylation at Ser-63 reduces tubulin binding 10-fold and suppresses the MT polymerization inhibition activity.
細胞内局在	Cytoplasm > cytoskeleton.

画像



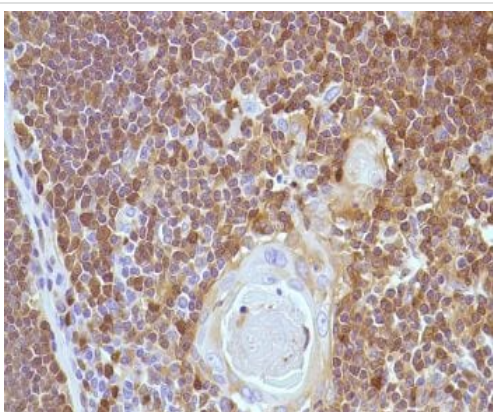
Immunohistochemistry (Formalin/PFA-fixed paraffin-embedded sections) - Anti-Stathmin 1 antibody [SP49], prediluted (ab228139)

Formalin-fixed, paraffin-embedded human tonsil tissue stained for Stathmin 1 using ab228139 in immunohistochemical analysis.



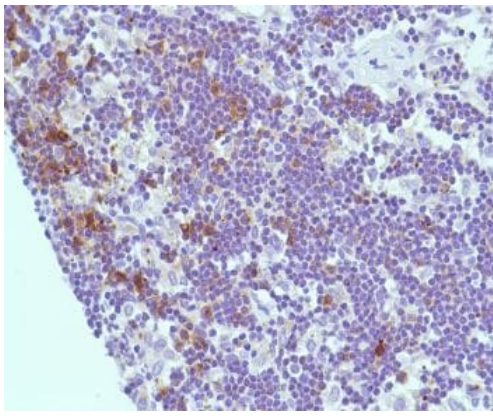
Immunohistochemistry (Formalin/PFA-fixed paraffin-embedded sections) - Anti-Stathmin 1 antibody [SP49], prediluted (ab228139)

Formalin-fixed, paraffin-embedded human B-cell lymphoma tissue stained for Stathmin 1 using ab228139 in immunohistochemical analysis.



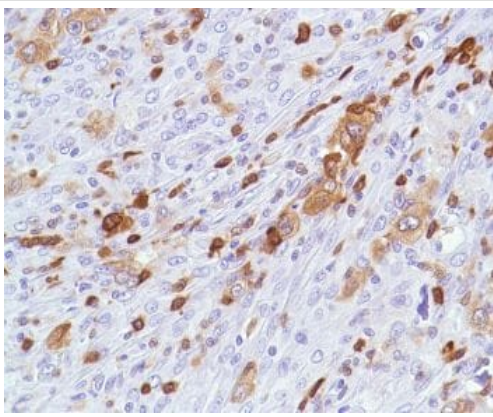
Immunohistochemistry (Formalin/PFA-fixed paraffin-embedded sections) - Anti-Stathmin 1 antibody [SP49], prediluted (ab228139)

Formalin-fixed, paraffin-embedded human thymus tissue stained for Stathmin 1 using ab228139 in immunohistochemical analysis.



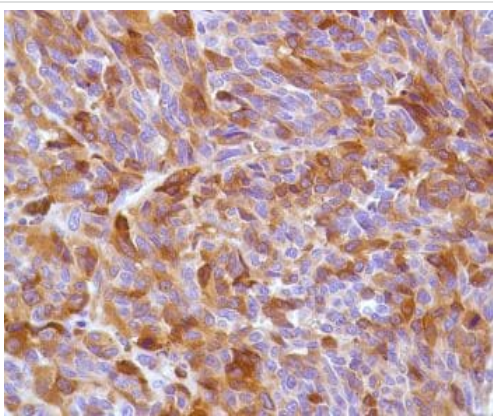
Formalin-fixed, paraffin-embedded human reactive lymph node tissue stained for Stathmin 1 using ab228139 in immunohistochemical analysis.

Immunohistochemistry (Formalin/PFA-fixed paraffin-embedded sections) - Anti-Stathmin 1 antibody [SP49], prediluted (ab228139)



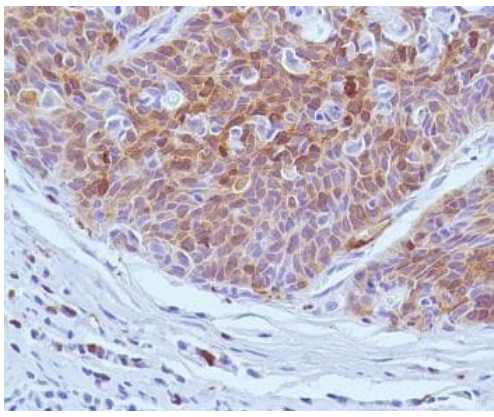
Formalin-fixed, paraffin-embedded human HK lymphoma tissue stained for Stathmin 1 using ab228139 in immunohistochemical analysis.

Immunohistochemistry (Formalin/PFA-fixed paraffin-embedded sections) - Anti-Stathmin 1 antibody [SP49], prediluted (ab228139)



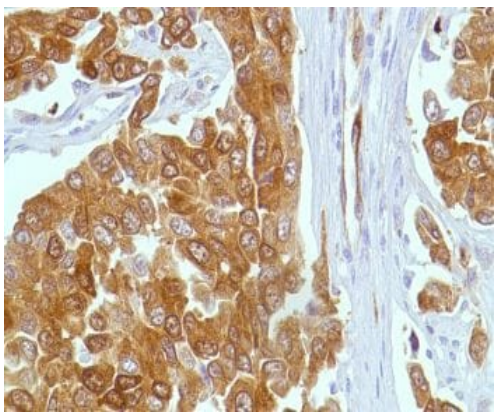
Formalin-fixed, paraffin-embedded human melanoma tissue stained for Stathmin 1 using ab228139 in immunohistochemical analysis.

Immunohistochemistry (Formalin/PFA-fixed paraffin-embedded sections) - Anti-Stathmin 1 antibody [SP49], prediluted (ab228139)



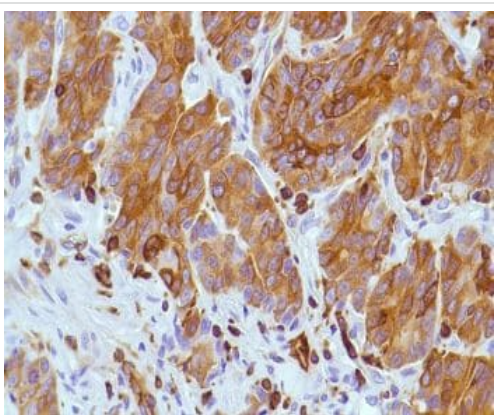
Immunohistochemistry (Formalin/PFA-fixed paraffin-embedded sections) - Anti-Stathmin 1 antibody [SP49], prediluted (ab228139)

Formalin-fixed, paraffin-embedded human cervical squamous cell carcinoma tissue stained for Stathmin 1 using ab228139 in immunohistochemical analysis.



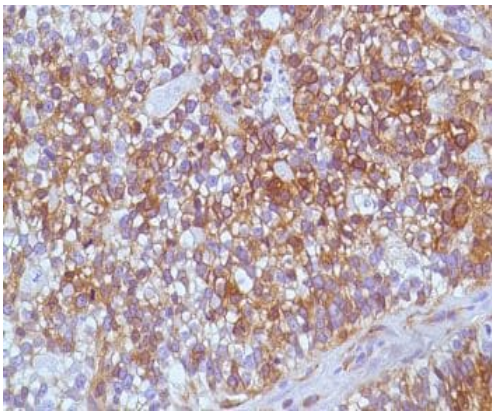
Immunohistochemistry (Formalin/PFA-fixed paraffin-embedded sections) - Anti-Stathmin 1 antibody [SP49], prediluted (ab228139)

Formalin-fixed, paraffin-embedded human breast ductal cell carcinoma tissue stained for Stathmin 1 using ab228139 in immunohistochemical analysis.



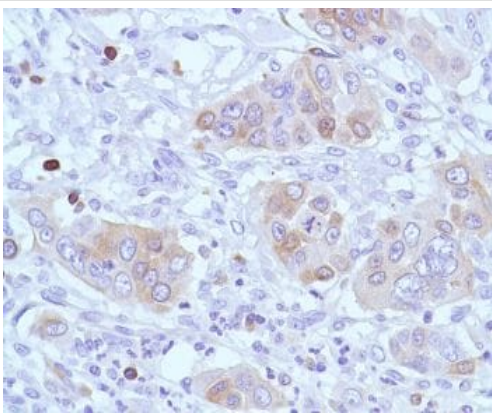
Immunohistochemistry (Formalin/PFA-fixed paraffin-embedded sections) - Anti-Stathmin 1 antibody [SP49], prediluted (ab228139)

Formalin-fixed, paraffin-embedded human colon adenocarcinoma tissue stained for Stathmin 1 using ab228139 in immunohistochemical analysis.



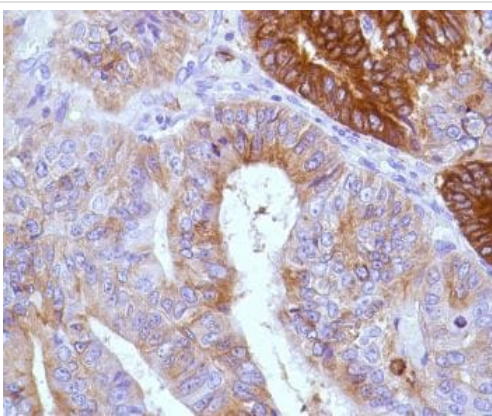
Immunohistochemistry (Formalin/PFA-fixed paraffin-embedded sections) - Anti-Stathmin 1 antibody [SP49], prediluted (ab228139)

Formalin-fixed, paraffin-embedded human ovarian adenocarcinoma tissue stained for Stathmin 1 using ab228139 in immunohistochemical analysis.



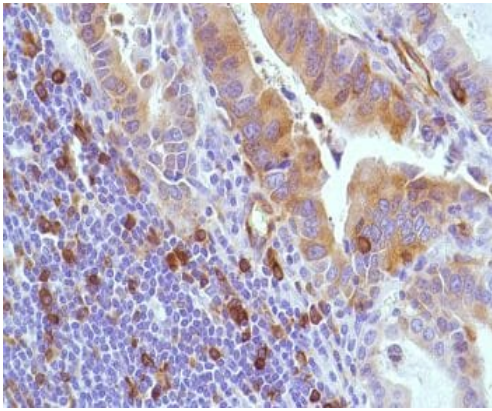
Immunohistochemistry (Formalin/PFA-fixed paraffin-embedded sections) - Anti-Stathmin 1 antibody [SP49], prediluted (ab228139)

Formalin-fixed, paraffin-embedded human pancreatic adenocarcinoma tissue stained for Stathmin 1 using ab228139 in immunohistochemical analysis.



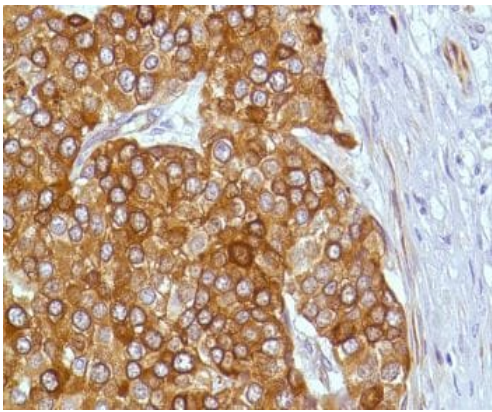
Immunohistochemistry (Formalin/PFA-fixed paraffin-embedded sections) - Anti-Stathmin 1 antibody [SP49], prediluted (ab228139)

Formalin-fixed, paraffin-embedded human endometrium adenocarcinoma tissue stained for Stathmin 1 using ab228139 in immunohistochemical analysis.



Immunohistochemistry (Formalin/PFA-fixed paraffin-embedded sections) - Anti-Stathmin 1 antibody [SP49], prediluted (ab228139)

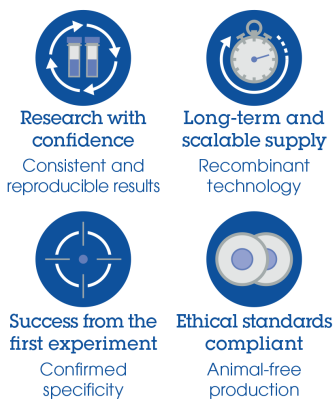
Formalin-fixed, paraffin-embedded human stomach adenocarcinoma tissue stained for Stathmin 1 using ab228139 in immunohistochemical analysis.



Immunohistochemistry (Formalin/PFA-fixed paraffin-embedded sections) - Anti-Stathmin 1 antibody [SP49], prediluted (ab228139)

Formalin-fixed, paraffin-embedded human bladder transitional cell carcinoma tissue stained for Stathmin 1 using ab228139 in immunohistochemical analysis.

Why choose a recombinant antibody?



Anti-Stathmin 1 antibody [SP49], prediluted (ab228139)

Please note: All products are "FOR RESEARCH USE ONLY. NOT FOR USE IN DIAGNOSTIC PROCEDURES"

Our Abpromise to you: Quality guaranteed and expert technical support

- Replacement or refund for products not performing as stated on the datasheet
- Valid for 12 months from date of delivery
- Response to your inquiry within 24 hours

- We provide support in Chinese, English, French, German, Japanese and Spanish
- Extensive multi-media technical resources to help you
- We investigate all quality concerns to ensure our products perform to the highest standards

If the product does not perform as described on this datasheet, we will offer a refund or replacement. For full details of the Abpromise, please visit <https://www.abcam.co.jp/abpromise> or contact our technical team.

Terms and conditions

- Guarantee only valid for products bought direct from Abcam or one of our authorized distributors