


Anti-Stathmin 1 antibody [SP49] ab101690

リコンビナント RabMAb[®]

2 References [画像数 8](#)

製品の概要

| | |
|--------------|---|
| 製品名 | Anti-Stathmin 1 antibody [SP49] |
| 製品の詳細 | Rabbit monoclonal [SP49] to Stathmin 1 |
| 由来種 | Rabbit |
| アプリケーション | 適用あり: Flow Cyt (Intra), WB, IHC-P, ICC/IF |
| 種交差性 | 交差種: Mouse, Human 交差が予測される動物種: Rat, Chicken, Cow, Dog, Pig  |
| 免疫原 | Synthetic peptide within Human Stathmin 1 aa 100 to the C-terminus (internal sequence). The exact sequence is proprietary. Database link: P16949 |
| ポジティブ・コントロール | IHC-P: Human Tonsil, and breast carcinoma tissue; WB: NIH3T3 cell lysate; Flow Cyt (Intra): Jurkat and Neuro-2a cell lysates; ICC: Jurkat cell lysate. |
| 特記事項 | This product is FOR RESEARCH USE ONLY. For commercial use, please contact partnerships@abcam.com. |

製品の特性

| | |
|----------|--|
| 製品の状態 | Liquid |
| 保存方法 | Shipped at 4°C. Store at +4°C. |
| バッファー | pH: 7.60 Preservative: 0.1% Sodium azide Constituents: PBS, 1% BSA |
| 精製度 | Protein A/G purified |
| 特記事項(精製) | Purified from TCS by protein A/G. |
| ポリ/モノ | モノクローナル |
| クローン名 | SP49 |
| アイソタイプ | IgG |

アプリケーション

The Abpromise guarantee

Abpromise保証は、次のテスト済みアプリケーションにおけるab101690の使用に適用されず

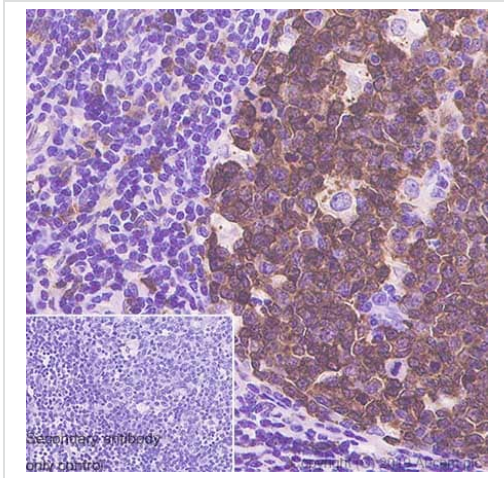
アプリケーションノートには、推奨の開始希釈率がありますが、適切な希釈率につきましてはご検討ください。

| アプリケーション | Abreviews | 特記事項 |
|------------------|-----------|---|
| Flow Cyt (Intra) | | Use at an assay dependent concentration. ab172730 - Rabbit monoclonal IgG, is suitable for use as an isotype control with this antibody. |
| WB | | Use at an assay dependent concentration. |
| IHC-P | | 1/100. Perform heat mediated antigen retrieval with citrate buffer pH 6 before commencing with IHC staining protocol. In details: boil tissue section in 10mM Citrate buffer, pH 6.0 for 10-20 min followed by cooling at RT for 20 min. |
| ICC/IF | | 1/500. |

ターゲット情報

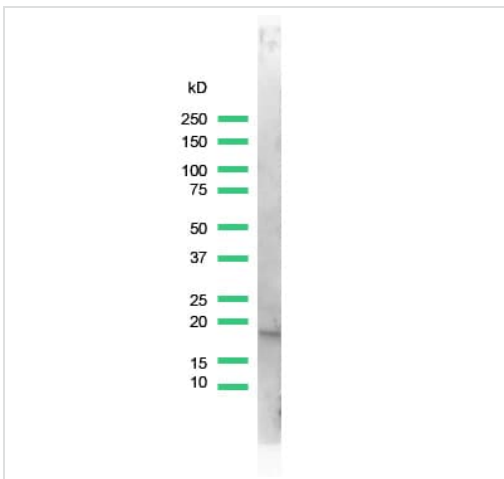
| | |
|-------|---|
| 機能 | Involved in the regulation of the microtubule (MT) filament system by destabilizing microtubules. Prevents assembly and promotes disassembly of microtubules. Phosphorylation at Ser-16 may be required for axon formation during neurogenesis. Involved in the control of the learned and innate fear. |
| 組織特異性 | Ubiquitous. Expression is strongest in fetal and adult brain, spinal cord, and cerebellum, followed by thymus, bone marrow, testis, and fetal liver. Expression is intermediate in colon, ovary, placenta, uterus, and trachea, and is readily detected at substantially lower levels in all other tissues examined. Lowest expression is found in adult liver. Present in much greater abundance in cells from patients with acute leukemia of different subtypes than in normal peripheral blood lymphocytes, non-leukemic proliferating lymphoid cells, bone marrow cells, or cells from patients with chronic lymphoid or myeloid leukemia. |
| 配列類似性 | Belongs to the stathmin family. Contains 1 SLD (stathmin-like) domain. |
| 翻訳後修飾 | Many different phosphorylated forms are observed depending on specific combinations among the sites which can be phosphorylated. MAPK is responsible for the phosphorylation of stathmin in response to NGF. Phosphorylation at Ser-16 seems to be required for neuron polarization (By similarity). Phosphorylation at Ser-63 reduces tubulin binding 10-fold and suppresses the MT polymerization inhibition activity. |
| 細胞内局在 | Cytoplasm > cytoskeleton. |

画像



Immunohistochemistry (Formalin/PFA-fixed paraffin-embedded sections) - Anti-Stathmin 1 antibody [SP49] (ab101690)

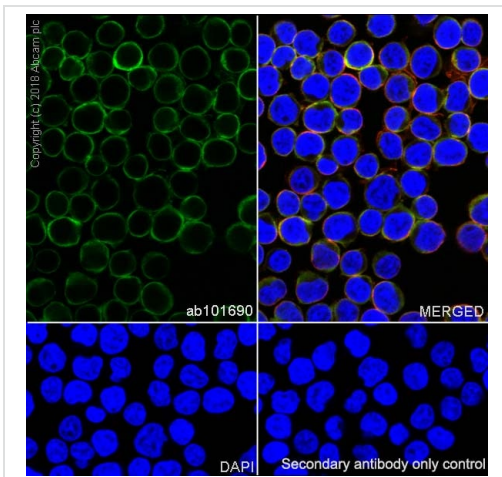
Immunohistochemistry (Formalin/PFA-fixed paraffin-embedded sections) analysis of Human tonsil tissue sections labeling Stathmin 1 with Purified ab101690 at 1/400 dilution (0.29 $\mu\text{g/ml}$). Heat mediated antigen retrieval was performed Heat mediated antigen retrieval with sodium citrate buffer (pH 6.0, epitope retrieval solution 1) for 20mins. Rabbit specific IHC polymer detection kit HRP/DAB (**ab209101**) was used as the secondary antibody. Negative control: PBS instead of the primary antibody. Hematoxylin was used as a counterstain.



Western blot - Anti-Stathmin 1 antibody [SP49] (ab101690)

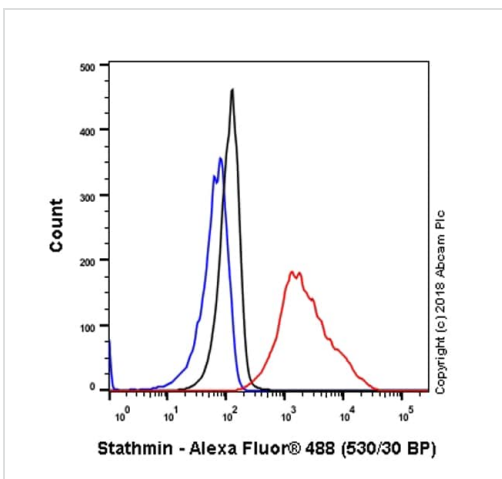
Anti-Stathmin 1 antibody [SP49] (ab101690) at 1/25 dilution + lysate prepared from NIH3T3 cells

Observed band size: 18 kDa



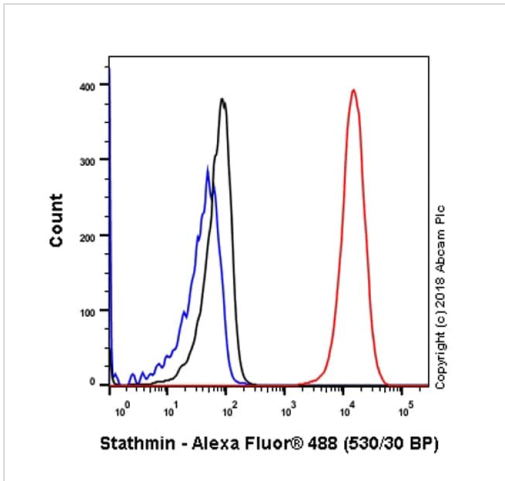
Immunocytochemistry/ Immunofluorescence - Anti-Stathmin 1 antibody [SP49] (ab101690)

Immunocytochemistry/ Immunofluorescence analysis of Jurkat (human T cell leukemia T lymphocyte) cells labeling Stathmin 1 with purified ab101690 at 1/500 (0.6 µg/ml). Cells were fixed in 4% paraformaldehyde and permeabilized with 0.1% Triton X-100. Cells were counterstained with Ab195889 Anti-alpha Tubulin antibody [DM1A] - Microtubule Marker (Alexa Fluor® 594) 1/200 (2.5 µg/ml). Goat anti rabbit IgG (Alexa Fluor® 488, **ab150077**) was used as the secondary antibody at 1/1000 (2 µg/ml) dilution. DAPI was used as nuclear counterstain. PBS instead of the primary antibody was used as the secondary antibody only control.



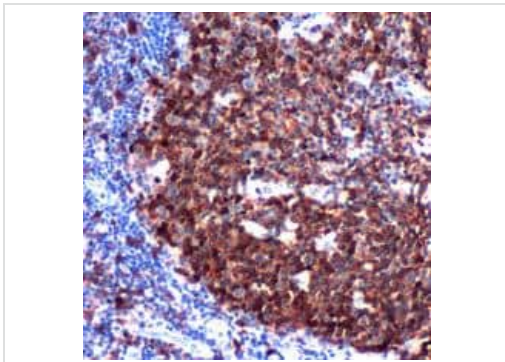
Flow Cytometry (Intracellular) - Anti-Stathmin 1 antibody [SP49] (ab101690)

Flow cytometry analysis of HepG2 (human liver hepatocellular carcinoma cell line) labeling Stathmin 1 with purified ab101690 (red). Cells were fixed with 4% paraformaldehyde and permeabilised with 90% methanol. Goat anti rabbit IgG (Alexa Fluor® 488, **ab150077**) was used as a secondary antibody. Isotype control -Rabbit monoclonal IgG (**ab172730**) (Black). Unlabeled control -Unlabelled cells (blue).



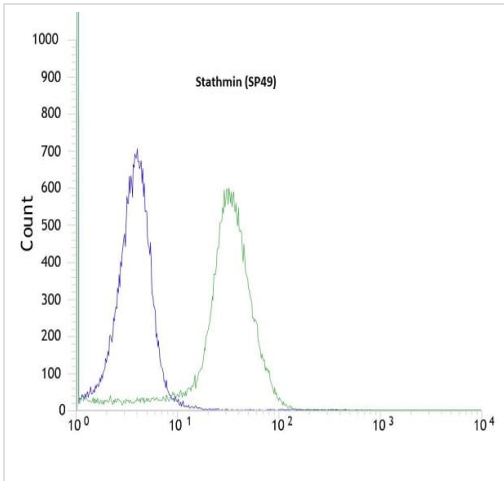
Flow Cytometry (Intracellular) - Anti-Stathmin 1 antibody [SP49] (ab101690)

Flow cytometry analysis of Jurkat (human acute T cell leukemia) labeling Stathmin 1 with purified ab101690 (red). Cells were fixed with 4% paraformaldehyde and permeabilised with 90% methanol. Goat anti rabbit IgG (Alexa Fluor® 488, [ab150077](#)) was used as a secondary antibody. Isotype control -Rabbit monoclonal IgG ([ab172730](#)) (Black). Unlabeled control -Unlabelled cells (blue).



Immunohistochemistry (Formalin/PFA-fixed paraffin-embedded sections) - Anti-Stathmin 1 antibody [SP49] (ab101690)




ab101690 at 1/100 dilution staining Stathmin 1 in formalin-fixed, paraffin-embedded Human tonsil by Immunohistochemistry (Formalin/PFA-fixed paraffin-embedded sections).



Flow cytometric analysis of rabbit anti-Stathmin 1 (SP49) antibody ab101690 in HeLa cells (green) compared to negative control of rabbit IgG (blue).

Flow Cytometry (Intracellular) - Anti-Stathmin 1 antibody [SP49] (ab101690)

Why choose a recombinant antibody?

| | |
|--|--|
|  <p>Research with confidence Consistent and reproducible results</p> |  <p>Long-term and scalable supply Recombinant technology</p> |
|  <p>Success from the first experiment Confirmed specificity</p> |  <p>Ethical standards compliant Animal-free production</p> |

Anti-Stathmin 1 antibody [SP49] (ab101690)

Please note: All products are "FOR RESEARCH USE ONLY. NOT FOR USE IN DIAGNOSTIC PROCEDURES"

Our Abpromise to you: Quality guaranteed and expert technical support

- Replacement or refund for products not performing as stated on the datasheet
- Valid for 12 months from date of delivery
- Response to your inquiry within 24 hours
- We provide support in Chinese, English, French, German, Japanese and Spanish
- Extensive multi-media technical resources to help you
- We investigate all quality concerns to ensure our products perform to the highest standards

If the product does not perform as described on this datasheet, we will offer a refund or replacement. For full details of the Abpromise, please visit <https://www.abcam.co.jp/abpromise> or contact our technical team.

Terms and conditions

- Guarantee only valid for products bought direct from Abcam or one of our authorized distributors