

Anti-STAT6 antibody [YE361] ab32520

リコンビナント **RabMAb**

★★★★★ **1 Abreviews** **60 References** **画像数 17**

製品の概要

製品名	Anti-STAT6 antibody [YE361]
製品の詳細	Rabbit monoclonal [YE361] to STAT6
由来種	Rabbit
特異性	This antibody does not cross-react with other Stat family members.
アプリケーション	適用あり: ChIC/CUT&RUN-seq, Flow Cyt (Intra), WB, IHC-P, ICC/IF, IP
種交差性	交差種: Mouse, Human
免疫原	Synthetic peptide within Human STAT6 aa 800 to the C-terminus (C terminal). The exact sequence is proprietary. Database link: P42226
ポジティブ・コントロール	WB: Raji, NIH/3T3 and RAW 264.7 cell lysates. IHC-P: Human skin carcinoma, kidney, transitional cell carcinoma of bladder, glioma and solitary fibrous tumor tissues; Mouse kidney tissue. ICC/IF: HeLa cells. Flow Cyt (intra): HeLa cells. IP: NIH/3T3 cell lysate. ChIC/CUT&RUN-Seq: HeLa cells.
特記事項	This product is a recombinant monoclonal antibody, which offers several advantages including: <ul style="list-style-type: none"> - High batch-to-batch consistency and reproducibility - Improved sensitivity and specificity - Long-term security of supply - Animal-free production For more information see here . Our RabMAb [®] technology is a patented hybridoma-based technology for making rabbit monoclonal antibodies. For details on our patents, please refer to RabMAb[®] patents . Rat: We have preliminary internal testing data to indicate this antibody may not react with this species. Please contact us for more information.

製品の特性

製品の状態	Liquid
保存方法	Shipped at 4°C. Store at +4°C short term (1-2 weeks). Upon delivery aliquot. Store at -20°C. Avoid freeze / thaw cycle.
バッファー	pH: 7.20 Preservative: 0.01% Sodium azide

	Constituents: 59% PBS, 40% Glycerol, 0.05% BSA
精製度	Protein A purified
ポリモノ	モノクローナル
クローン名	YE361
アイソタイプ	IgG

アプリケーション

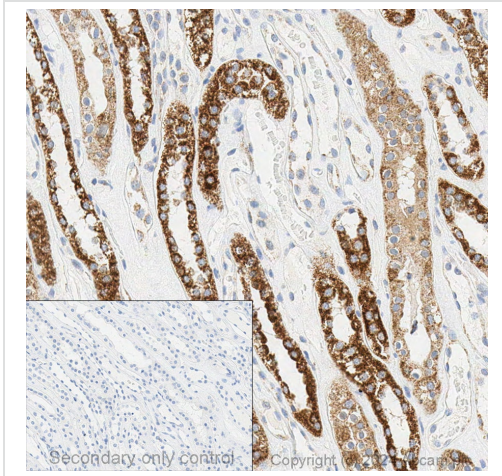
The Abpromise guarantee **Abpromise保証は、次のテスト済みアプリケーションにおけるab32520の使用に適用されず**
 アプリケーションノートには、推奨の開始希釈率がありますが、適切な希釈率につきましてはご検討ください。

アプリケーション	Abreviews	特記事項
ChIC/CUT&RUN-seq		Use at an assay dependent concentration. 5µg
Flow Cyt (Intra)		Use at an assay dependent concentration.
WB	★★★★★ (1)	1/1000 - 1/2000. Detects a band of approximately 100 kDa (predicted molecular weight: 94 kDa).
IHC-P		1/50. Perform heat mediated antigen retrieval before commencing with IHC staining protocol. See IHC antigen retrieval protocols .
ICC/IF		1/100.
IP		1/20 - 1/80.

ターゲット情報

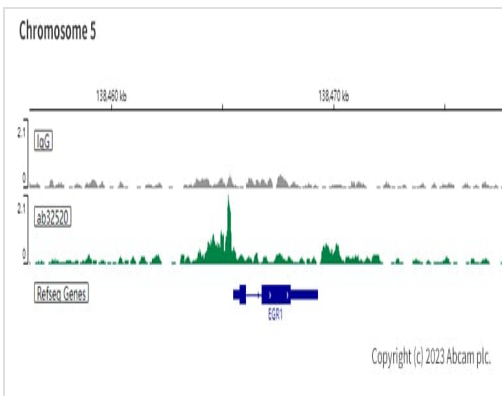
機能	Carries out a dual function: signal transduction and activation of transcription. Involved in interleukin-4 signalling.
配列類似性	Belongs to the transcription factor STAT family. Contains 1 SH2 domain.
翻訳後修飾	Tyrosine phosphorylated following stimulation by IL-4 and IL-3.
細胞内局在	Cytoplasm. Nucleus. Translocated into the nucleus in response to phosphorylation.

画像



Immunohistochemical analysis of formalin fixed paraffin embedded human kidney labelling STAT6 with ab32520 at a concentration of 0.79µg/ml. The immunostaining was performed on a Ventana DISCOVERY ULTRA (Roche Tissue Diagnostics) instrument with an OptiView DAB IHC Detection Kit. Heat mediated antigen retrieval was conducted for 32 min with DISCOVERY cell conditioning solution (CC1) 100°C, pH 8.5. ab32520 was incubated at 37°C for 16 min. Sections were counterstained with Hematoxylin II. Image inset shows absence of staining in secondary antibody only control.

Immunohistochemistry (Formalin/PFA-fixed paraffin-embedded sections) - Anti-STAT6 antibody [YE361] (ab32520)

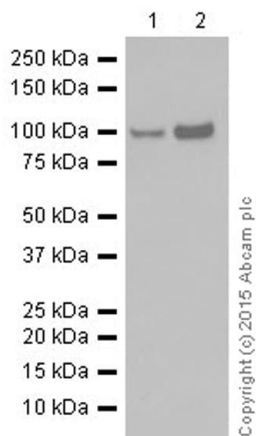


ChIC/CUT&RUN was performed using a pAG-MNase at a final concentration of 700 ng/mL, 2.5 x 10⁵ HeLa (Human cervix adenocarcinoma epithelial cell line) cells and 5µg of ab32520 [YE361]. The resulting DNA was sequenced on the Illumina NovaSeq 6000 to a depth of 10 million reads. The negative IgG control **ab172730** is also shown.

Additional screenshots of mapped reads can be downloaded [here](#).

The University of Geneva owns patents relevant to ChIC (Chromatin Immuno-Cleavage) methods.

ChIC/CUT&RUN sequencing - Anti-STAT6 antibody [YE361] (ab32520)



Western blot - Anti-STAT6 antibody [YE361]
(ab32520)

All lanes : Anti-STAT6 antibody [YE361] (ab32520) at 1/1000 dilution (purified)

Lane 1 : NIH/3T3 (mouse embryo fibroblast cell line) cell lysate

Lane 2 : RAW 264.7 (mouse macrophage cell line transformed with Abelson murine leukemia virus) cell lysate

Lysates/proteins at 10 µg per lane.

Secondary

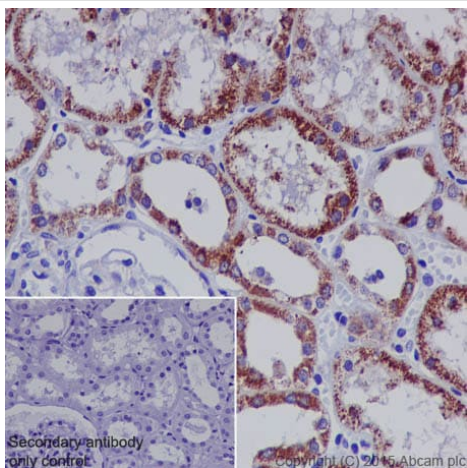
All lanes : HRP goat anti-rabbit IgG (H+L) at 1/20000 dilution

Predicted band size: 94 kDa

Observed band size: 100 kDa

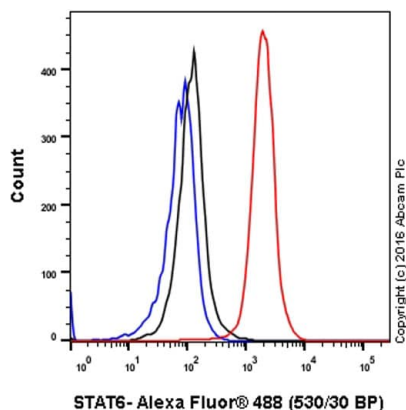
Blocking buffer: 5% NFDm/TBST

Dilution buffer: 5% NFDm/TBST



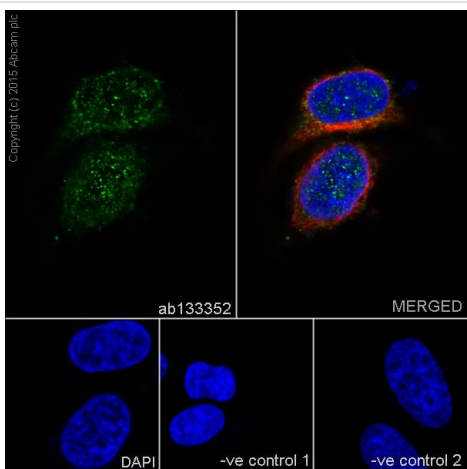
Immunohistochemistry (Formalin/PFA-fixed paraffin-embedded sections) - Anti-STAT6 antibody [YE361] (ab32520)

Immunohistochemical staining of paraffin embedded human kidney with purified ab32520 at a working dilution of 1/50. The secondary antibody used is HRP goat anti-rabbit IgG H&L (**ab97051**) at 1/500. The sample is counter-stained with hematoxylin. Antigen retrieval was performed using Tris-EDTA buffer, pH 9.0. PBS was used instead of the primary antibody as the negative control, and is shown in the inset.



Flow Cytometry (Intracellular) - Anti-STAT6 antibody [YE361] (ab32520)

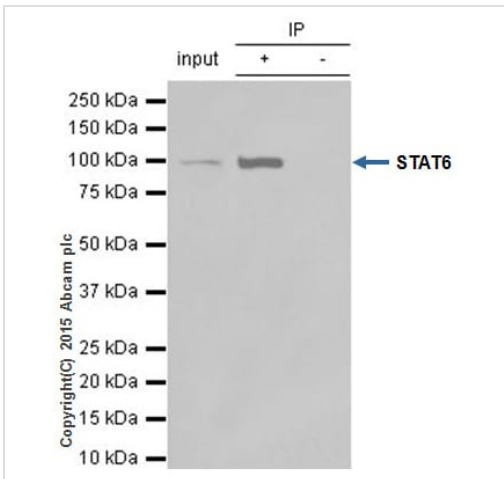
Intracellular Flow Cytometry analysis of HeLa (human epithelial cell line from cervix adenocarcinoma) cells labeling STAT6 with purified ab32520 at 1/30 dilution (10ug/ml) (red). Cells were fixed with 4% paraformaldehyde and permeabilised with 90% methanol. A Goat anti rabbit IgG (Alexa Fluor[®] 488) (1/2000 dilution) was used as the secondary antibody. Rabbit monoclonal IgG (Black) was used as the isotype control, cells without incubation with primary antibody and secondary antibody (Blue) was used as the unlabeled control.



Immunocytochemistry/ Immunofluorescence - Anti-STAT6 antibody [YE361] (ab32520)

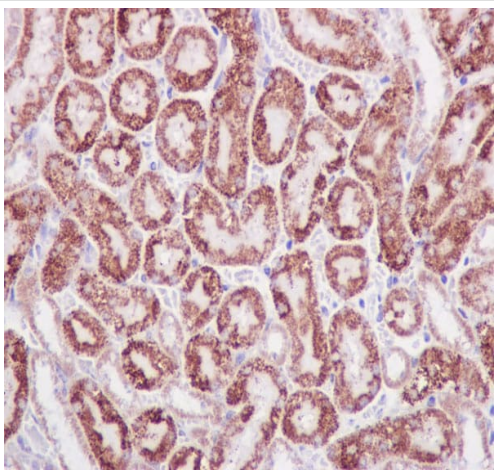
Immunofluorescence staining of HeLa (human epithelial cell line from cervix adenocarcinoma) cells with purified ab32520 at a working dilution of 1/100, counter-stained with DAPI. The secondary antibody was Alexa Fluor[®] 488 goat anti-rabbit (**ab150077**), used at a dilution of 1/1000. **ab7291**, a mouse anti-tubulin antibody (1/1000), was used to stain tubulin along with **ab150120** (Alexa Fluor[®] 594 goat anti-mouse, 1/1000), shown in the top right hand panel. The cells were fixed in 4% PFA and permeabilized using 0.1% Triton X 100. The negative controls are shown in bottom middle and right hand panels - for negative control 1, purified ab32520 was used at a dilution of 1/500 followed by an Alexa Fluor[®] 594 goat anti-mouse antibody (**ab150120**) at a dilution of 1/500. For negative control 2, **ab7291** (mouse anti-tubulin) was

used at a dilution of 1/500 followed by an Alexa Fluor[®] 488 goat anti-rabbit antibody ([ab150077](#)) at a dilution of 1/400.



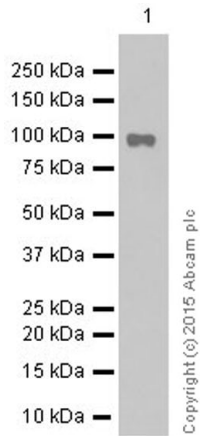
Immunoprecipitation - Anti-STAT6 antibody [YE361]
(ab32520)

ab32520 (purified) at 1/20 immunoprecipitating STAT6 in 10 μ g NIH/3T3 (mouse embryo fibroblast cell line; Lanes 1 and 2, observed at 100 kDa). Lane 3 - PBS. For western blotting, HRP Veriblot for IP ([ab131366](#)) was used for detection (1/10 000). Blocking buffer and concentration: 5% NFDm/TBST Dilution buffer and concentration: 5% NFDm/TBST



Immunohistochemistry (Formalin/PFA-fixed paraffin-embedded sections) - Anti-STAT6 antibody [YE361]
(ab32520)

Immunohistochemistry (Formalin/PFA-fixed paraffin-embedded sections) analysis of mouse kidney tissue sections labelling STAT6 with unpurified ab32520 at a dilution of 1/1000. HRP goat anti-rabbit ([ab97051](#)) was used at a dilution of 1/500. The antigen retrieval solution was Tris-EDTA buffer, pH 9.0.



Western blot - Anti-STAT6 antibody [YE361]
(ab32520)

Anti-STAT6 antibody [YE361] (ab32520) at 1/20000 dilution
(purified) + Raji (human Burkitt's lymphoma cell line) cell lysate at 10
µg

Secondary

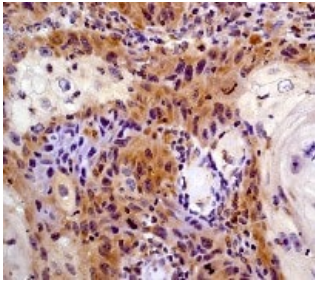
HRP goat anti-rabbit IgG (H+L) at 1/20000 dilution

Predicted band size: 94 kDa

Observed band size: 100 kDa

Blocking buffer: 5% NFDm/TBST

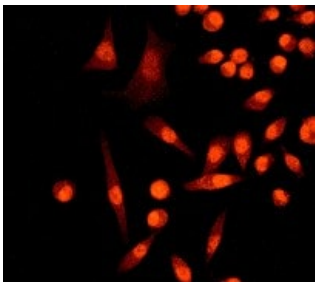
Dilution buffer: 5% NFDm/TBST



Immunohistochemistry (Formalin/PFA-fixed paraffin-
embedded sections) - Anti-STAT6 antibody [YE361]
(ab32520)

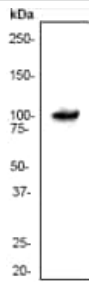
Immunohistochemistry (Formalin/PFA-fixed paraffin-embedded
sections) analysis of human skin carcinoma tissue labelling STAT6
with unpurified ab32520 at 1/100.

Perform heat mediated antigen retrieval before commencing with
IHC staining protocol.



Immunocytochemistry/ Immunofluorescence - Anti-
STAT6 antibody [YE361] (ab32520)

Immunocytochemistry/Immunofluorescence analysis of HeLa (human
epithelial cell line from cervix adenocarcinoma) cells labelling
STAT6 with unpurified ab32520 at 1/100.

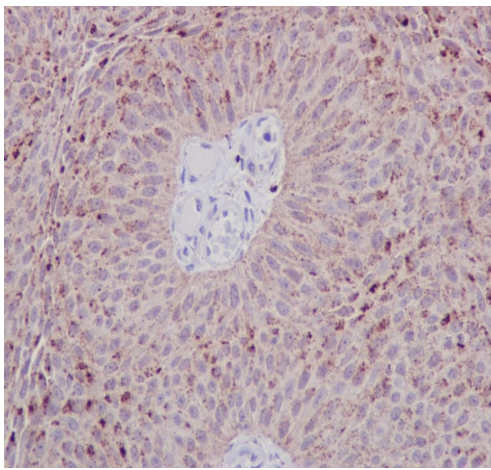


Western blot - Anti-STAT6 antibody [YE361]
(ab32520)

Anti-STAT6 antibody [YE361] (ab32520) at 1/1000 dilution
(unpurified) + NIH/3T3 (mouse embryo fibroblast cell line) cell lysate

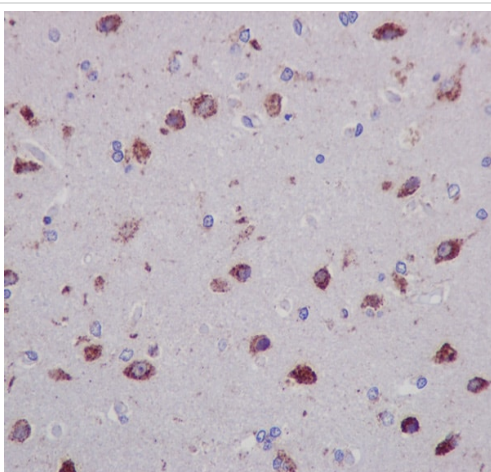
Predicted band size: 94 kDa

Observed band size: 100 kDa



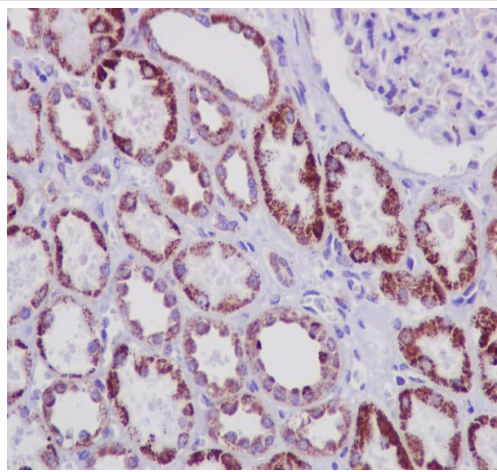
Immunohistochemistry (Formalin/PFA-fixed paraffin-
embedded sections) - Anti-STAT6 antibody [YE361]
(ab32520)

Immunohistochemistry (Formalin/PFA-fixed paraffin-embedded sections) analysis of human transitional cell carcinoma of bladder tissue sections labelling STAT6 with unpurified ab32520 at a dilution of 1/1000. HRP goat anti-rabbit ([ab97051](#)) was used at a dilution of 1/500. The antigen retrieval solution was Tris-EDTA buffer, pH 9.0.



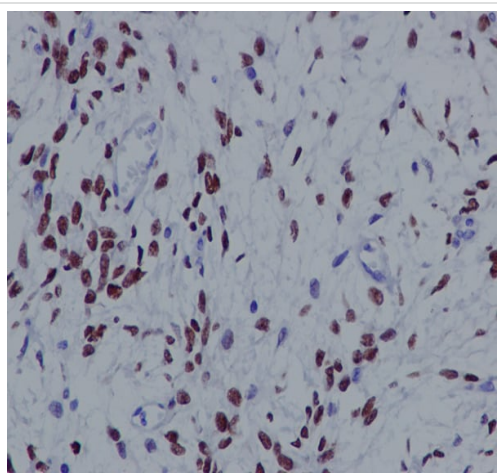
Immunohistochemistry (Formalin/PFA-fixed paraffin-
embedded sections) - Anti-STAT6 antibody [YE361]
(ab32520)

Immunohistochemistry (Formalin/PFA-fixed paraffin-embedded sections) analysis of human glioma tissue sections labelling STAT6 with unpurified ab32520 at a dilution of 1/1000. HRP goat anti-rabbit ([ab97051](#)) was used at a dilution of 1/500. The antigen retrieval solution was Tris-EDTA buffer, pH 9.0.



Immunohistochemistry (Formalin/PFA-fixed paraffin-embedded sections) - Anti-STAT6 antibody [YE361] (ab32520)





Immunohistochemistry (Formalin/PFA-fixed paraffin-embedded sections) analysis of human kidney tissue sections labelling STAT6 with unpurified ab32520 at a dilution of 1/1000. HRP goat anti-rabbit (**ab97051**) was used at a dilution of 1/500. The antigen retrieval solution was Tris-EDTA buffer, pH 9.0.



Immunohistochemistry (Formalin/PFA-fixed paraffin-embedded sections) - Anti-STAT6 antibody [YE361] (ab32520)

Immunohistochemistry (Formalin/PFA-fixed paraffin-embedded sections) analysis of human solitary fibrous tumor tissue sections labelling STAT6 with unpurified ab32520 at a dilution of 1/1000. HRP goat anti-rabbit (**ab97051**) was used at a dilution of 1/500. The antigen retrieval solution was Tris-EDTA buffer, pH 9.0.

Why choose a recombinant antibody?

 <p>Research with confidence Consistent and reproducible results</p>	 <p>Long-term and scalable supply Recombinant technology</p>
 <p>Success from the first experiment Confirmed specificity</p>	 <p>Ethical standards compliant Animal-free production</p>

Anti-STAT6 antibody [YE361] (ab32520)

Please note: All products are "FOR RESEARCH USE ONLY. NOT FOR USE IN DIAGNOSTIC PROCEDURES"

Our Abpromise to you: Quality guaranteed and expert technical support

- Replacement or refund for products not performing as stated on the datasheet
- Valid for 12 months from date of delivery
- Response to your inquiry within 24 hours
- We provide support in Chinese, English, French, German, Japanese and Spanish
- Extensive multi-media technical resources to help you
- We investigate all quality concerns to ensure our products perform to the highest standards

If the product does not perform as described on this datasheet, we will offer a refund or replacement. For full details of the Abpromise, please visit <https://www.abcam.co.jp/abpromise> or contact our technical team.

Terms and conditions

- Guarantee only valid for products bought direct from Abcam or one of our authorized distributors