

Anti-Stanniocalcin 1/STC antibody [EPR6055] ab124891

リコンビナント RabMAb[®]

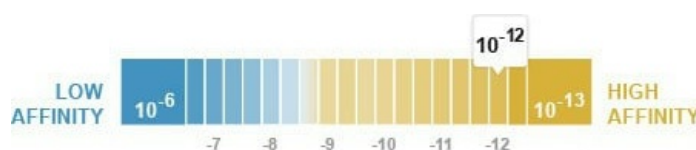
2 References 画像数 3

製品の概要

製品名	Anti-Stanniocalcin 1/STC antibody [EPR6055]
製品の詳細	Rabbit monoclonal [EPR6055] to Stanniocalcin 1/STC
由来種	Rabbit
アプリケーション	適用あり: WB 適用なし: ICC/IF or IHC-P
種交差性	交差種: Human 非交差種: Mouse, Rat
免疫原	Synthetic peptide within Human Stanniocalcin 1/STC aa 200-300 (C terminal). The exact sequence is proprietary.
ポジティブ・コントロール	Human Prostate, Ovary cancer and Plasma lysates.
特記事項	This product is a recombinant monoclonal antibody, which offers several advantages including: <ul style="list-style-type: none"> - High batch-to-batch consistency and reproducibility - Improved sensitivity and specificity - Long-term security of supply - Animal-free production For more information see here . Our RabMAb [®] technology is a patented hybridoma-based technology for making rabbit monoclonal antibodies. For details on our patents, please refer to RabMAb[®] patents .

製品の特性

製品の状態	Liquid
保存方法	Shipped at 4°C. Store at -20°C. Stable for 12 months at -20°C.
解離定数 (K _D 値)	K _D = 2.10 x 10 ⁻¹² M



[Learn more about K_D](#)

バッファー	pH: 7.2
-------	---------

	Preservative: 0.05% Sodium azide Constituents: 40% Glycerol (glycerin, glycerine), 9.85% Tris glycine, 50% Tissue culture supernatant
精製度	Protein A purified
ポリ/モノ	モノクローナル
クローン名	EPR6055
アイソタイプ	IgG

アプリケーション

The Abpromise guarantee **Abpromise保証は、** 次のテスト済みアプリケーションにおけるab124891の使用に適用されます
アプリケーションノートには、推奨の開始希釈率がありますが、適切な希釈率につきましてはご検討ください。

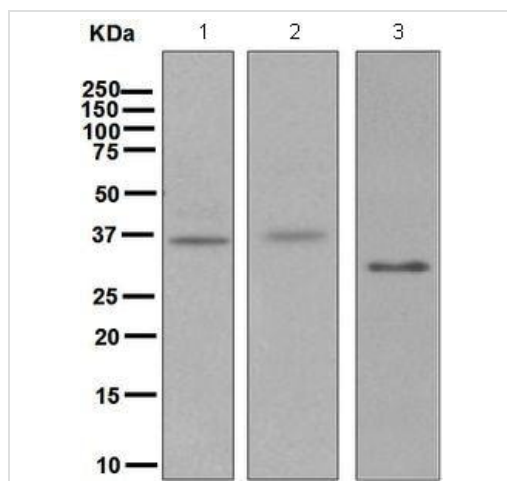
アプリケーション	Abreviews	特記事項
WB		1/1000 - 1/10000. Detects a band of approximately 31-35 kDa (predicted molecular weight: 28 kDa).

追加情報 Is unsuitable for ICC/IF or IHC-P.

ターゲット情報

機能	Stimulates renal phosphate reabsorption, and could therefore prevent hypercalcemia.
組織特異性	Expressed in most tissues, with the highest levels in ovary, prostate, heart, kidney and thyroid. In the kidney, expression is confined to the nephron, specifically in the distal convoluted tubule and in the collecting tubule. Not detected in the brain, liver, spleen, peripheral blood leukocytes and adrenal medulla.
配列類似性	Belongs to the stanniocalcin family.
細胞内局在	Secreted.

画像



Western blot - Anti-Stanniocalcin 1/STC antibody
[EPR6055] (ab124891)

All lanes : Anti-Stanniocalcin 1/STC antibody [EPR6055]
(ab124891) at 1/1000 dilution

Lane 1 : Human Prostate lysate

Lane 2 : Human Ovary cancer lysate

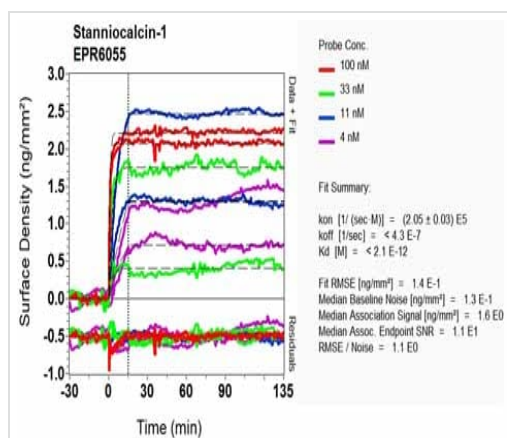
Lane 3 : Human Plasma lysate

Lysates/proteins at 10 µg per lane.

Secondary

All lanes : Goat anti-Rabbit HRP at 1/2000 dilution

Predicted band size: 28 kDa



OI-RD Scanning - Anti-Stanniocalcin 1/STC antibody
[EPR6055] (ab124891)

Equilibrium disassociation constant (K_D)

Learn more about K_D

[Click here to learn more about \$K_D\$](#)

Why choose a recombinant antibody?



Research with confidence
Consistent and reproducible results



Long-term and scalable supply
Recombinant technology



Success from the first experiment
Confirmed specificity



Ethical standards compliant
Animal-free production

Anti-Stanniocalcin 1/STC antibody [EPR6055]
(ab124891)

Please note: All products are "FOR RESEARCH USE ONLY. NOT FOR USE IN DIAGNOSTIC PROCEDURES"

Our Abpromise to you: Quality guaranteed and expert technical support

- Replacement or refund for products not performing as stated on the datasheet
- Valid for 12 months from date of delivery
- Response to your inquiry within 24 hours

- We provide support in Chinese, English, French, German, Japanese and Spanish
- Extensive multi-media technical resources to help you
- We investigate all quality concerns to ensure our products perform to the highest standards

If the product does not perform as described on this datasheet, we will offer a refund or replacement. For full details of the Abpromise, please visit <https://www.abcam.co.jp/abpromise> or contact our technical team.

Terms and conditions

- Guarantee only valid for products bought direct from Abcam or one of our authorized distributors