

Anti-SSEA1 antibody [MC-480] ab16285

★★★★★ 9 Abreviews 60 References 画像数 4

製品の概要

製品名	Anti-SSEA1 antibody [MC-480]
製品の詳細	Mouse monoclonal [MC-480] to SSEA1
由来種	Mouse
特異性	We guarantee IHC-P in Human only
アプリケーション	適用あり: IHC-FoFr, Flow Cyt, IHC-P, ICC
種交差性	交差種: Mouse, Human
免疫原	Tissue, cells or virus. This information is proprietary to Abcam and/or its suppliers.
ポジティブ・コントロール	This antibody gave a positive result in IHC in the following FFPE tissue: Human Hodgkin's Lymphoma Mouse embryonic carcinoma cell lines positive for SSEA1 include: F9, PCC4, ND-1, SCC1, NG2, LT/SV, MH-15, FA-25. Cell lines negative for SSEA1 include: PYS-2, OTT6050f, B3T3SV. C57SV, K129SV. KCA, QAIB, BW5147. ICC: Mouse embryonic stem cells. Flow Cyt: Mouse ES cells
特記事項	<p>This antibody clone is manufactured by Abcam. If you require a custom buffer formulation or conjugation for your experiments, please contact orders@abcam.com.</p> <p>The Life Science industry has been in the grips of a reproducibility crisis for a number of years. Abcam is leading the way in addressing this with our range of recombinant monoclonal antibodies and knockout edited cell lines for gold-standard validation. Please check that this product meets your needs before purchasing.</p> <p>If you have any questions, special requirements or concerns, please send us an inquiry and/or contact our Support team ahead of purchase. Recommended alternatives for this product can be found below, along with publications, customer reviews and Q&As</p>

製品の特性

製品の状態	Liquid
保存方法	Shipped at 4°C. Store at +4°C short term (1-2 weeks). Upon delivery aliquot. Store at -20°C or -80°C. Avoid freeze / thaw cycle.
バッファー	Preservative: 0.02% Sodium azide Constituent: 99% Tissue culture supernatant
精製度	Tissue culture supernatant

特記事項(精製)	Tissue culture supernatant was cross flow concentrated.
ポリ/モノ	モノクローナル
クローン名	MC-480
ミエローマ	P3-x63-Ag8
アイソタイプ	IgM
軽鎖の種類	kappa

アプリケーション

The Abpromise guarantee **Abpromise保証は、**次のテスト済みアプリケーションにおけるab16285の使用に適用されます
アプリケーションノートには、推奨の開始希釈率がありますが、適切な希釈率につきましてはご検討ください。

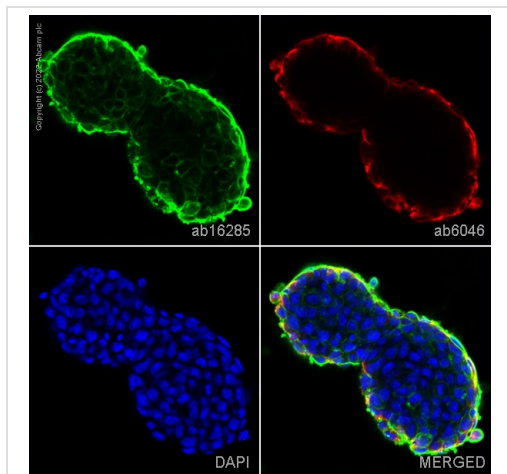
アプリケーション	Abreviews	特記事項
IHC-FoFr		Use at an assay dependent concentration.
Flow Cyt	★★★★★ (2)	Use at an assay dependent concentration.
IHC-P		1/200. Perform heat mediated antigen retrieval with citrate buffer pH 6 before commencing with IHC staining protocol.
ICC		1/1000. Fixation with 100% MeOH (5 min) or 4% PFA (10 min).

ターゲット情報

関連性

Stage-specific embryonic antigen-1 (SSEA-1) was described and named as part of a series of embryonic antigens, defined by monoclonal antibodies isolated in the lab of Prof. Davor Solter and Prof. Barbara Knowles (Solter D and Knowles B.B, 1978, PNAS 75:5565). The anti SSEA-1 monoclonal antibody detects a carbohydrate epitope, which is first present on blastomeres of the 8-cell mouse embryo. It is also present on the cell surface of mouse embryonic stem (ES) cells, mouse embryonal carcinoma (EC) cells and both mouse and human embryonic germ (EG) cells. SSEA1 expression decreases as mouse ES cells differentiate but increases during the differentiation of human ES and EC cells. This antigen is also found on the cell surface of human neutrophils and myeloid leukemias, where it's expression pattern is likened to that of CD15. However, it is currently believed that the expression pattern of SSEA1 differs from CD15, especially on the early mouse embryo.

画像

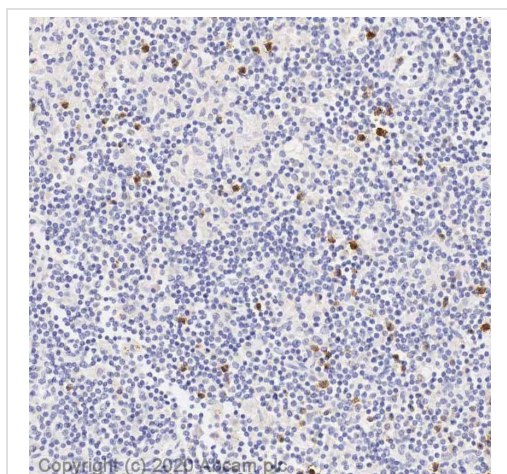


Immunocytochemistry - Anti-SSEA1 antibody [MC-480] (ab16285)

ab16285 staining SSEA1 in mES cells. The cells were fixed with 4% paraformaldehyde (10 min), permeabilized with 0.1% PBS-Tween for 5 minutes and then blocked with 1% BSA/10% normal goat serum/0.3M glycine in 0.1%PBS-Tween for 1h. The cells were then incubated overnight at 4°C with ab16285 at a 1/1000 dilution and **ab6046**, Rabbit polyclonal to beta Tubulin - Loading Control. Cells were then incubated with **ab150121**, Goat polyclonal Secondary Antibody to Mouse IgM - mu chain (Alexa Fluor® 488) at 1/1000 dilution (shown in green) and **ab150080**, Goat polyclonal Secondary Antibody to Rabbit IgG - H&L (Alexa Fluor® 594) at 1/1000 dilution (shown in pseudocolour red). Nuclear DNA was labelled with DAPI (shown in blue).

Also suitable in cells fixed with 100% methanol (5 min).

Image was acquired with a confocal microscope (Leica-Microsystems TCS SP8) and a single confocal section is shown.

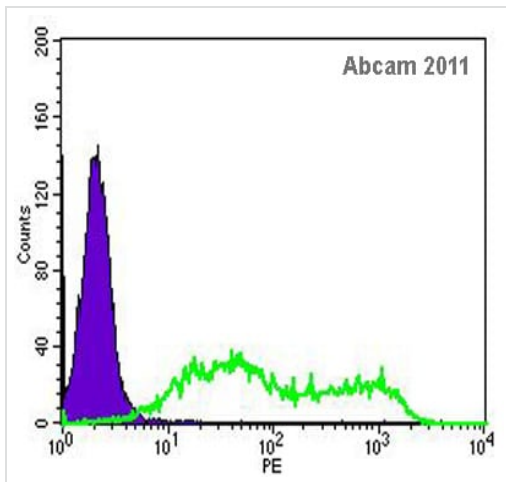


Immunohistochemistry (Formalin/PFA-fixed paraffin-embedded sections) - Anti-SSEA1 antibody [MC-480] (ab16285)

IHC image of SSEA1 staining in Human Hodgkin's Lymphoma formalin fixed paraffin embedded tissue section*. The section was pre-treated using pressure cooker heat mediated antigen retrieval with sodium citrate buffer (pH6.0). The section was incubated with ab16285, 1/200 dilution, overnight at 4°C. A Goat anti-Mouse (IgM) HRP conjugated secondary antibody (**ab97230** at 1/2000) was used to detect the primary and visualized using DAB as the chromogen. The section was counterstained with haematoxylin and mounted with DPX.

For other IHC staining systems (automated and non-automated) customers should optimize variable parameters such as antigen retrieval conditions, primary antibody concentration and antibody incubation times.

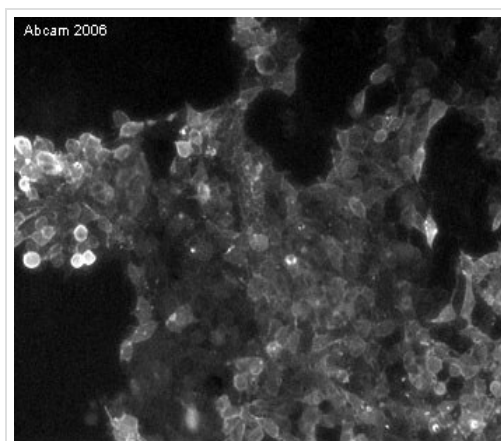
*Tissue obtained from the Human Research Tissue Bank, supported by the NIHR Cambridge Biomedical Research Centre



Flow Cytometry - Anti-SSEA1 antibody [MC-480]
(ab16285)

This image is taken from an anonymous abreview.

Cell surface flow analysis of SSEA1 on D3 mouse ES cells using ab16285 at 1:100 dilution. Purple histogram represents negative control; green line represents anti-SSEA1 antibody (ab16285).



Immunocytochemistry - Anti-SSEA1 antibody [MC-480] (ab16285)

This image is courtesy of the laboratory of Peter Andrews.

The image shows staining of the cell membranes of P19 mouse embryonic carcinoma cells using SSEA1-specific antibody, ab16285.

Please note: All products are "FOR RESEARCH USE ONLY. NOT FOR USE IN DIAGNOSTIC PROCEDURES"

Our Abpromise to you: Quality guaranteed and expert technical support

- Replacement or refund for products not performing as stated on the datasheet
- Valid for 12 months from date of delivery
- Response to your inquiry within 24 hours
- We provide support in Chinese, English, French, German, Japanese and Spanish

- Extensive multi-media technical resources to help you
- We investigate all quality concerns to ensure our products perform to the highest standards

If the product does not perform as described on this datasheet, we will offer a refund or replacement. For full details of the Abpromise, please visit <https://www.abcam.co.jp/abpromise> or contact our technical team.

Terms and conditions

- Guarantee only valid for products bought direct from Abcam or one of our authorized distributors