

Anti-SSB (phospho S366) antibody ab61800

画像数 2

製品の概要

| | |
|----------|---|
| 製品名 | Anti-SSB (phospho S366) antibody |
| 製品の詳細 | Rabbit polyclonal to SSB (phospho S366) |
| 由来種 | Rabbit |
| アプリケーション | 適用あり: ICC/IF, WB |
| 種交差性 | 交差種: Human |
| 免疫原 | Synthetic peptide corresponding to Human SSB aa 300-400 (phospho S366). Database link: P05455 |
| 特記事項 | <p>The Life Science industry has been in the grips of a reproducibility crisis for a number of years. Abcam is leading the way in addressing this with our range of recombinant monoclonal antibodies and knockout edited cell lines for gold-standard validation. Please check that this product meets your needs before purchasing.</p> <p>If you have any questions, special requirements or concerns, please send us an inquiry and/or contact our Support team ahead of purchase. Recommended alternatives for this product can be found below, along with publications, customer reviews and Q&As</p> |

製品の特性

| | |
|-----------|--|
| 製品の状態 | Liquid |
| 保存方法 | Shipped at 4°C. Upon delivery aliquot and store at -20°C. Avoid freeze / thaw cycles. |
| バッファー | pH: 7.40 Preservative: 0.02% Sodium azide Constituents: PBS, 50% Glycerol (glycerin, glycerine), 0.87% Sodium chloride |
| 精製度 | Immunogen affinity purified |
| 特記事項 (精製) | The antibody was affinity-purified from rabbit antiserum by affinity-chromatography using epitope-specific phosphopeptide. The antibody against non-phosphopeptide was removed by chromatography using non-phosphopeptide corresponding to the phosphorylation site. |
| ポリ/モノ | ポリクローナル |
| アイソタイプ | IgG |

アプリケーション

The Abpromise guarantee

Abpromise保証は、次のテスト済みアプリケーションにおけるab61800の使用に適用されます

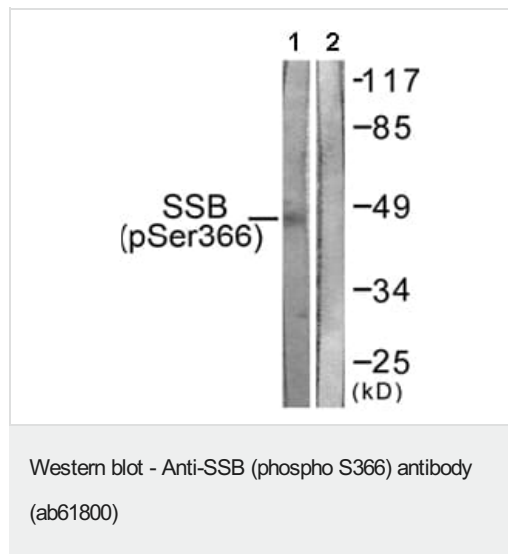
アプリケーションノートには、推奨の開始希釈率がありますが、適切な希釈率につきましてはご検討ください。

| アプリケーション | Abreviews | 特記事項 |
|----------|-----------|--|
| ICC/IF | | 1/500 - 1/1000. |
| WB | | 1/500 - 1/1000. Detects a band of approximately 45 kDa (predicted molecular weight: 45 kDa). |

ターゲット情報

| | |
|-------|--|
| 機能 | Binds to the 3' poly(U) termini of nascent RNA polymerase III transcripts, protecting them from exonuclease digestion and facilitating their folding and maturation. |
| 配列類似性 | Contains 1 HTH La-type RNA-binding domain. Contains 1 RRM (RNA recognition motif) domain. |
| 翻訳後修飾 | Phosphorylated. The phosphorylation sites are at the C-terminal part of the protein. The N-terminus is blocked. |
| 細胞内局在 | Nucleus. |

画像



All lanes : Anti-SSB (phospho S366) antibody (ab61800) at 1/500 dilution

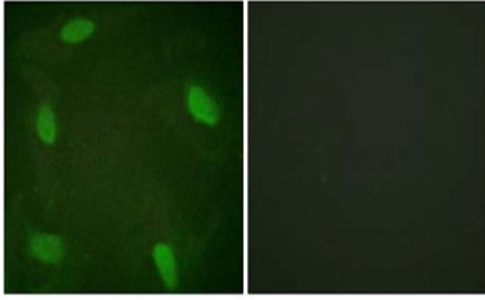
Lane 1 : extracts from 293 cells

Lane 2 : extracts from 293 cells with immunizing peptide

Lysates/proteins at 5 µg per lane.

Predicted band size: 45 kDa

Observed band size: 45 kDa



Ab61800 at 1/500 dilution staining HeLa cells, (left) treated with Forskolin (40nM, 30mins), (right) untreated cells.

Immunocytochemistry/ Immunofluorescence - Anti-SSB (phospho S366) antibody (ab61800)

Please note: All products are "FOR RESEARCH USE ONLY. NOT FOR USE IN DIAGNOSTIC PROCEDURES"

Our Abpromise to you: Quality guaranteed and expert technical support

- Replacement or refund for products not performing as stated on the datasheet
- Valid for 12 months from date of delivery
- Response to your inquiry within 24 hours
- We provide support in Chinese, English, French, German, Japanese and Spanish
- Extensive multi-media technical resources to help you
- We investigate all quality concerns to ensure our products perform to the highest standards

If the product does not perform as described on this datasheet, we will offer a refund or replacement. For full details of the Abpromise, please visit <https://www.abcam.co.jp/abpromise> or contact our technical team.

Terms and conditions

- Guarantee only valid for products bought direct from Abcam or one of our authorized distributors