





Anti-SRP68 antibody ab157120

画像数 3

製品の概要

製品名	Anti-SRP68 antibody
製品の詳細	Rabbit polyclonal to SRP68
由来種	Rabbit
アプリケーション	適用あり: WB, IP
種交差性	<p>交差種: Mouse, Human</p> <p>交差が予測される動物種: Rabbit, Horse, Guinea pig, Cow, Dog, Pig, Chimpanzee, Ferret, Rhesus monkey, Gorilla, Opossum, Common marmoset </p>
免疫原	<p>Synthetic peptide, corresponding to a region within the N terminal amino acids 1-50 of Human SRP68 (NP_055045.2).</p> <p> Run BLAST with  Run BLAST with </p>
ポジティブ・コントロール	HeLa, 293T, TCMK 1, Renca, NIH 3T3, and Jurkat whole cell lysates.
特記事項	<p>The Life Science industry has been in the grips of a reproducibility crisis for a number of years. Abcam is leading the way in addressing this with our range of recombinant monoclonal antibodies and knockout edited cell lines for gold-standard validation. Please check that this product meets your needs before purchasing.</p> <p>If you have any questions, special requirements or concerns, please send us an inquiry and/or contact our Support team ahead of purchase. Recommended alternatives for this product can be found below, along with publications, customer reviews and Q&As</p>

製品の特性

製品の状態	Liquid
保存方法	Shipped at 4°C. Store at +4°C.
バッファー	<p>pH: 7</p> <p>Preservative: 0.09% Sodium azide</p> <p>Constituent: 99% Tris citrate/phosphate</p> <p>pH 7 to 8</p>
精製度	Immunogen affinity purified
特記事項 (精製)	ab157120 was affinity purified using an epitope specific to SRP68 immobilized on solid support.
ポリ/モノ	ポリクローナル

アイソタイプlgG

アプリケーション

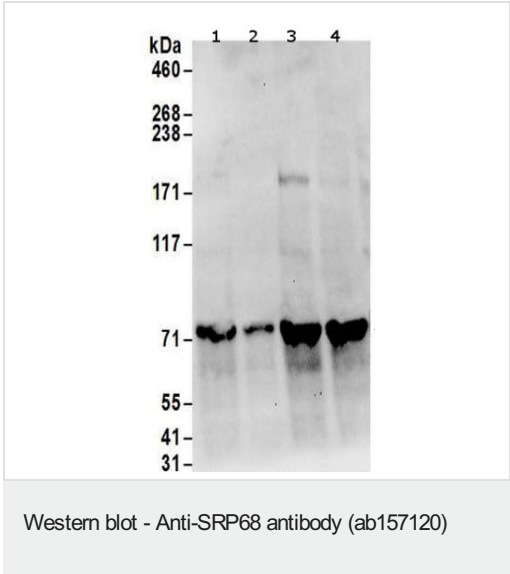
The Abpromise guarantee Abpromise保証は、 次のテスト済みアプリケーションにおけるab157120の使用に適用されます
アプリケーションノートには、推奨の開始希釈率がありますが、適切な希釈率につきましてはご検討ください。

アプリケーション	Abreviews	特記事項
WB		1/2000 - 1/10000. Predicted molecular weight: 70 kDa.
IP		Use at 2-10 µg/mg of lysate.

ターゲット情報

機能	Signal-recognition-particle assembly has a crucial role in targeting secretory proteins to the rough endoplasmic reticulum membrane. SRP68 binds the 7S RNA, SRP72 binds to this complex subsequently. This ribonucleoprotein complex might interact directly with the docking protein in the ER membrane and possibly participate in the elongation arrest function.
配列類似性	Belongs to the SRP68 family.
ドメイン	The RNA-binding domain is located near the N-terminus.
細胞内局在	Cytoplasm. Nucleus > nucleolus.

画像



All lanes : Anti-SRP68 antibody (ab157120) at 0.1 µg/ml

Lane 1 : HeLa whole cell lysate at 50 µg

Lane 2 : HeLa whole cell lysate at 15 µg

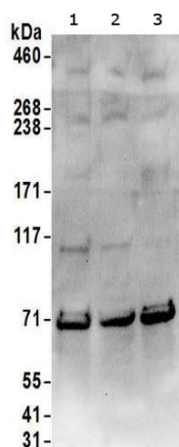
Lane 3 : 293T whole cell lysate at 50 µg

Lane 4 : Jurkat whole cell lysate at 50 µg

Developed using the ECL technique.

Predicted band size: 70 kDa

Exposure time: 30 seconds



Western blot - Anti-SRP68 antibody (ab157120)

All lanes : Anti-SRP68 antibody (ab157120) at 0.1 µg/ml

Lane 1 : TCMK 1 whole cell lysate

Lane 2 : Renca whole cell lysate

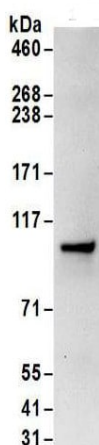
Lane 3 : NIH 3T3 whole cell lysate

Lysates/proteins at 50 µg per lane.

Developed using the ECL technique.

Predicted band size: 70 kDa

Exposure time: 30 seconds



Immunoprecipitation - Anti-SRP68 antibody
(ab157120)

Detection of SRP68 by Western Blot of Immunoprecipitate.

ab157120 at 0.4µg/ml labeling SRP68 in HeLa whole cell lysate

immunoprecipitated using ab157120 at 6µg/mg lysate (1 mg/IP;
20% of IP loaded/lane).

Detection: Chemiluminescence with exposure time of 10 seconds.

Please note: All products are "FOR RESEARCH USE ONLY. NOT FOR USE IN DIAGNOSTIC PROCEDURES"

Our Abpromise to you: Quality guaranteed and expert technical support

- Replacement or refund for products not performing as stated on the datasheet
- Valid for 12 months from date of delivery
- Response to your inquiry within 24 hours
- We provide support in Chinese, English, French, German, Japanese and Spanish
- Extensive multi-media technical resources to help you

- We investigate all quality concerns to ensure our products perform to the highest standards

If the product does not perform as described on this datasheet, we will offer a refund or replacement. For full details of the Abpromise, please visit <https://www.abcam.co.jp/abpromise> or contact our technical team.

Terms and conditions

- Guarantee only valid for products bought direct from Abcam or one of our authorized distributors