

Anti-Spt6 antibody ab32820

★★★★★ [1 Abreviews](#) [11 References](#) [画像数 2](#)

製品の概要

製品名	Anti-Spt6 antibody
製品の詳細	Rabbit polyclonal to Spt6
由来種	Rabbit
特異性	From Jan 2024, QC testing of replenishment batches of this polyclonal changed. All tested and expected application and reactive species combinations are still covered by our Abcam product promise. However, we no longer test all applications. For more information on a specific batch, please contact our Scientific Support who will be happy to help.
アプリケーション	適用あり: IP, WB
種交差性	交差種: Human 交差が予測される動物種: Mouse, Zebrafish 
免疫原	Synthetic peptide corresponding to Human Spt6 aa 1150-1250 conjugated to keyhole limpet haemocyanin. (Peptide available as ab32818 , ab32819)
ポジティブ・コントロール	This antibody gave a positive signal for the following cell lysates: HeLa Nuclear; HeLa; Jurkat.
特記事項	<p>The Life Science industry has been in the grips of a reproducibility crisis for a number of years. Abcam is leading the way in addressing this with our range of recombinant monoclonal antibodies and knockout edited cell lines for gold-standard validation. Please check that this product meets your needs before purchasing.</p> <p>If you have any questions, special requirements or concerns, please send us an inquiry and/or contact our Support team ahead of purchase. Recommended alternatives for this product can be found below, along with publications, customer reviews and Q&As</p>

製品の特性

製品の状態	Liquid
保存方法	Shipped at 4°C. Store at +4°C short term (1-2 weeks). Upon delivery aliquot. Store at -20°C or -80°C. Avoid freeze / thaw cycle.
バッファー	pH: 7.40 Preservative: 0.02% Sodium azide Constituent: PBS

Batches of this product that have a concentration < 1mg/ml may have BSA added as a stabilising agent. If you would like information about the formulation of a specific lot, please contact our scientific support team who will be happy to help.

精製度	Immunogen affinity purified
ポリ/モノ	ポリクローナル
アイソタイプ	IgG

アプリケーション

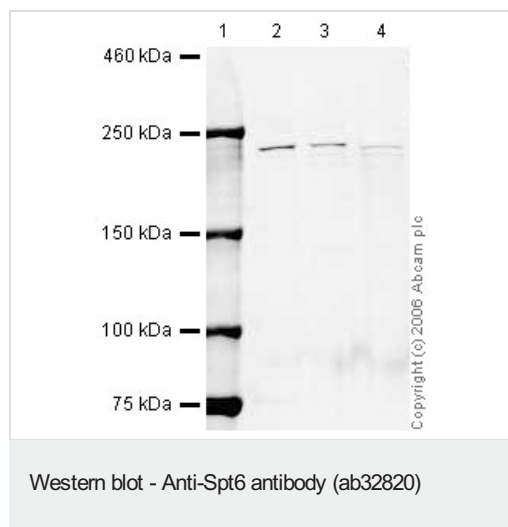
The Abpromise guarantee **Abpromise保証は、** 次のテスト済みアプリケーションにおけるab32820の使用に適用されます
アプリケーションノートには、推奨の開始希釈率がありますが、適切な希釈率につきましてはご検討ください。

アプリケーション	Abreviews	特記事項
IP		Use at an assay dependent concentration.
WB	★★★★★ (1)	1/500. Detects a band of approximately 230 kDa (predicted molecular weight: 199 kDa).

ターゲット情報

機能	Acts to stimulate transcriptional elongation by RNA polymerase II.
組織特異性	Ubiquitously expressed.
配列類似性	Belongs to the SPT6 family. Contains 1 S1 motif domain. Contains 1 SH2 domain.
細胞内局在	Nucleus.

画像



Lane 1 : Marker

Lanes 2-4 : Anti-Spt6 antibody (ab32820) at 1/500 dilution

Lane 5 : High Mark marker

Lane 2 : HeLa (Human epithelial carcinoma cell line) Whole Cell
Lysate at 10 µg

Lane 3 : Jurkat whole cell lysate (**ab7899**) at 20 µg

Lane 4 : HeLa (Human epithelial carcinoma cell line) Nuclear
Lysate at 20 µg

Secondary

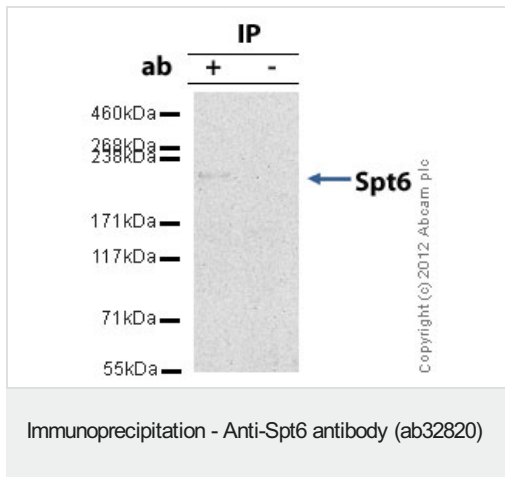
Lanes 2-4 : IR Dye 680 Conjugated Goat anti Rabbit IgG (H+L) at
1/21250 dilution

Performed under reducing conditions.

Predicted band size: 199 kDa

Observed band size: 230 kDa

Ab32820 detects a band at approximately 230kDa. Other antibodies to this target detect a band in this region and it is understood that this band corresponds to the native Spt6 protein.



Spt6 was immunoprecipitated using 0.5mg HeLa whole cell extract, 5µg of Rabbit polyclonal to Spt6 and 50µl of protein G magnetic beads (+). No antibody was added to the control (-).

The antibody was incubated under agitation with Protein G beads for 10min, HeLa whole cell extract lysate diluted in RIPA buffer was added to each sample and incubated for a further 10min under agitation.

Proteins were eluted by addition of 40µl SDS loading buffer and incubated for 10min at 70°C; 10µl of each sample was separated on a SDS PAGE gel, transferred to a nitrocellulose membrane, blocked with 5% BSA and probed with ab32820.

Secondary: Mouse monoclonal [SB62a] Secondary Antibody to Rabbit IgG light chain (HRP) ([ab99697](#)).

Band: 230kDa: Spt6

Please note: All products are "FOR RESEARCH USE ONLY. NOT FOR USE IN DIAGNOSTIC PROCEDURES"

Our Abpromise to you: Quality guaranteed and expert technical support

- Replacement or refund for products not performing as stated on the datasheet
- Valid for 12 months from date of delivery
- Response to your inquiry within 24 hours
- We provide support in Chinese, English, French, German, Japanese and Spanish
- Extensive multi-media technical resources to help you
- We investigate all quality concerns to ensure our products perform to the highest standards

If the product does not perform as described on this datasheet, we will offer a refund or replacement. For full details of the Abpromise, please visit <https://www.abcam.co.jp/abpromise> or contact our technical team.

Terms and conditions

- Guarantee only valid for products bought direct from Abcam or one of our authorized distributors