

Anti-SPINK1/P12 antibody [SP166] ab183347

リコンビナント **RabMAb**

画像数 3

製品の概要

製品名	Anti-SPINK1/P12 antibody [SP166]
製品の詳細	Rabbit monoclonal [SP166] to SPINK1/P12
由来種	Rabbit
アプリケーション	適用あり: WB, IHC-P
種交差性	交差種: Human
免疫原	Recombinant full length protein corresponding to Human SPINK1/P12 aa 1 to the C-terminus. Without signal peptide. Database link: <u>P00995</u>
ポジティブ・コントロール	Human prostate adenocarcinoma tissue; Human pancreas lysate
特記事項	Cow: We have preliminary internal testing data to indicate this antibody may not react with these species. Please contact us for more information. This product is a recombinant monoclonal antibody, which offers several advantages including: - High batch-to-batch consistency and reproducibility - Improved sensitivity and specificity - Long-term security of supply - Animal-free production For more information <u>see here</u> . This product is FOR RESEARCH USE ONLY. For commercial use, please contact partnerships@abcam.com.

製品の特性

製品の状態	Liquid
保存方法	Shipped at 4°C. Store at +4°C short term (1-2 weeks). Upon delivery aliquot. Store at -20°C long term. Avoid freeze / thaw cycle.
バッファー	pH: 7.60 Preservative: 0.1% Sodium azide Constituents: PBS, 1% BSA
精製度	Protein A/G purified
特記事項 (精製)	Purified from TCS by protein A/G.

ポリ/モノ	モノクローナル
クローン名	SP166
アイソタイプ	IgG

アプリケーション

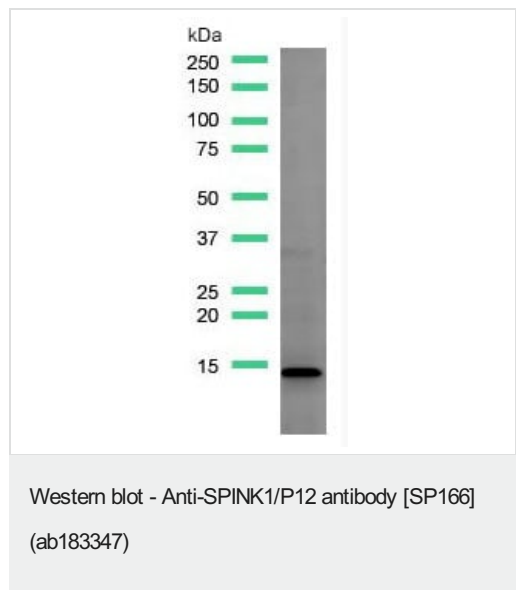
The Abpromise guarantee **Abpromise保証は、**次のテスト済みアプリケーションにおけるab183347の使用に適用されます
 アプリケーションノートには、推奨の開始希釈率がありますが、適切な希釈率につきましてはご検討ください。

アプリケーション	Abreviews	特記事項
WB		1/100. Predicted molecular weight: 8 kDa.
IHC-P		1/100. Perform heat mediated antigen retrieval with Tris/EDTA buffer pH 9.0 before commencing with IHC staining protocol.

ターゲット情報

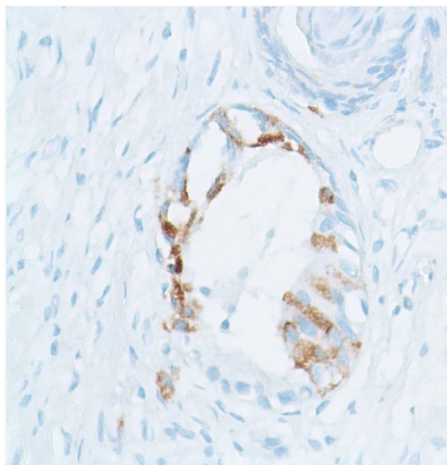
機能	Serine protease inhibitor which exhibits anti-trypsin activity (PubMed:7142173). In the pancreas, protects against trypsin-catalyzed premature activation of zymogens. In the male reproductive tract, binds to sperm heads where it modulates sperm capacitance by inhibiting calcium uptake and nitrogen oxide (NO) production.
関連疾患	Pancreatitis, hereditary Tropical calcific pancreatitis
配列類似性	Contains 1 Kazal-like domain.
細胞内局在	Secreted.

画像



Anti-SPINK1/P12 antibody [SP166] (ab183347) at 1/100 dilution +
 Human pancreas lysate

Predicted band size: 8 kDa



Immunohistochemical analysis of paraffin embedded Human prostate adenocarcinoma tissue labeling SPINK1/P12 with ab183347 at 1/100 dilution.

Immunohistochemistry (Formalin/PFA-fixed paraffin-embedded sections) - Anti-SPINK1/P12 antibody [SP166] (ab183347)

Why choose a recombinant antibody?



Research with confidence
Consistent and reproducible results



Long-term and scalable supply
Recombinant technology



Success from the first experiment
Confirmed specificity



Ethical standards compliant
Animal-free production

Anti-SPINK1/P12 antibody [SP166] (ab183347)

Please note: All products are "FOR RESEARCH USE ONLY. NOT FOR USE IN DIAGNOSTIC PROCEDURES"

Our Abpromise to you: Quality guaranteed and expert technical support

- Replacement or refund for products not performing as stated on the datasheet
- Valid for 12 months from date of delivery
- Response to your inquiry within 24 hours
- We provide support in Chinese, English, French, German, Japanese and Spanish
- Extensive multi-media technical resources to help you
- We investigate all quality concerns to ensure our products perform to the highest standards

If the product does not perform as described on this datasheet, we will offer a refund or replacement. For full details of the Abpromise, please visit <https://www.abcam.co.jp/abpromise> or contact our technical team.

Terms and conditions

- Guarantee only valid for products bought direct from Abcam or one of our authorized distributors