


Anti-Spermine synthase antibody [EPR9252(B)] ab156879

KO 評価済 リコンビナント RabMAb

4 References 画像数 4

製品の概要

製品名	Anti-Spermine synthase antibody [EPR9252(B)]
製品の詳細	Rabbit monoclonal [EPR9252(B)] to Spermine synthase
由来種	Rabbit
アプリケーション	適用あり: WB, ICC/IF 適用なし: IHC-P or IP
種交差性	交差種: Mouse, Human 交差が予測される動物種: Rat 
免疫原	Synthetic peptide within Human Spermine synthase aa 100-200. The exact sequence is proprietary. Database link: P52788
ポジティブ・コントロール	Recombinant Human Spermine synthase protein (ab116202) can be used as a positive control in WB. Human fetal heart extract, HeLa cell extract, Jurkat cell extract, K562 cell extract
特記事項	This product is a recombinant monoclonal antibody, which offers several advantages including: <ul style="list-style-type: none">- High batch-to-batch consistency and reproducibility- Improved sensitivity and specificity- Long-term security of supply- Animal-free production For more information see here . Our RabMAb [®] technology is a patented hybridoma-based technology for making rabbit monoclonal antibodies. For details on our patents, please refer to RabMAb[®] patents .

製品の特性

製品の状態	Liquid
保存方法	Shipped at 4°C. Store at -20°C.
バッファー	pH: 7.2 Preservative: 0.01% Sodium azide Constituents: 9% PBS, 40% Glycerol (glycerin, glycerine), 0.05% BSA, 50% Tissue culture supernatant
精製度	Protein A purified

ポリ/モノ	モノクローナル
クローン名	EPR9252(B)
アイソタイプ	IgG

アプリケーション

The Abpromise guarantee Abpromise保証は、次のテスト済みアプリケーションにおけるab156879の使用に適用されず
アプリケーションノートには、推奨の開始希釈率がありますが、適切な希釈率につきましてはご検討ください。

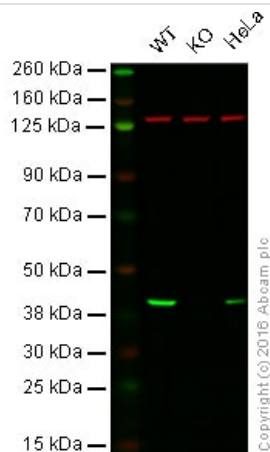
アプリケーション	Abreviews	特記事項
WB		1/1000 - 1/10000. Predicted molecular weight: 41 kDa.
ICC/IF		1/250 - 1/500.

追加情報 Is unsuitable for IHC-P or IP.

ターゲット情報

機能	Required for normal viability, growth and fertility.
パスウェイ	Amine and polyamine biosynthesis; spermine biosynthesis; spermine from spermidine: step 1/1.
関連疾患	Defects in SMS are the cause of Snyder-Robinson syndrome (SRS) [MIM:309583]; also known as X-linked mental retardation Snyder-Robinson type. SRS is characterized by moderate intellectual deficit, hypotonia, an unsteady gait, osteoporosis, kyphoscoliosis and facial asymmetry. Transmission is X-linked recessive.
配列類似性	Belongs to the spermidine/spermine synthase family.
ドメイン	Composed of 3 domains: the N-terminal domain has structural similarity to S-adenosylmethionine decarboxylase, the central domain is made up of four beta strands and the C-terminal domain is similar in structure to spermidine synthase. The N- and C-terminal domains are both required for activity.

画像



Western blot - Anti-Spermine synthase antibody [EPR9252(B)] (ab156879)

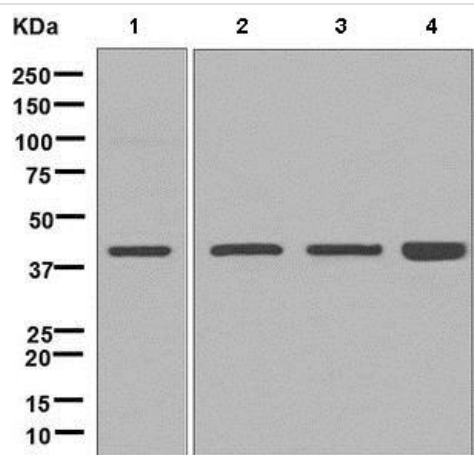
Lane 1: Wild-type HAP1 cell lysate (20 µg)

Lane 2: Spermine synthase knockout HAP1 cell lysate (20 µg)

Lane 3: HeLa cell lysate (20 µg)

Lanes 1 - 3: Merged signal (red and green). Green - ab156879 observed at 40 kDa. Red - loading control, **ab18058**, observed at 124 kDa.

ab156879 was shown to specifically react with Spermine synthase when Spermine synthase knockout samples were used. Wild-type and Spermine synthase knockout samples were subjected to SDS-PAGE. ab156879 and **ab18058** (loading control to vinculin) were diluted 1/1000 and 1/10000 respectively and incubated overnight at 4°C. Blots were developed with Goat anti-Rabbit IgG H&L (IRDye® 800CW) preadsorbed (**ab216773**) and Goat anti-Mouse IgG H&L (IRDye® 680RD) preadsorbed (**ab216776**) secondary antibodies at 1/10000 dilution for 1 hour at room temperature before imaging.



Western blot - Anti-Spermine synthase antibody [EPR9252(B)] (ab156879)

All lanes : Anti-Spermine synthase antibody [EPR9252(B)] (ab156879) at 1/1000 dilution

Lane 1 : Human fetal heart extract

Lane 2 : HeLa cell lysate

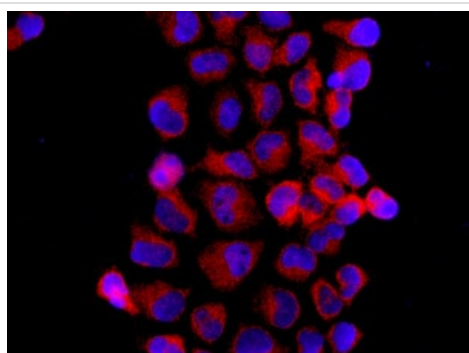
Lane 3 : Jurkat cell lysate

Lane 4 : K562 cell lysate

Lysates/proteins at 10 µg per lane.

Developed using the ECL technique.

Predicted band size: 41 kDa



Immunocytochemistry/ Immunofluorescence - Anti-Spermine synthase antibody [EPR9252(B)] (ab156879)

Immunofluorescence analysis of HeLa cells labeling Spermine Synthase with ab156879 antibody at a dilution of 1/250.

Why choose a recombinant antibody?



Research with confidence
Consistent and reproducible results



Long-term and scalable supply
Recombinant technology



Success from the first experiment
Confirmed specificity



Ethical standards compliant
Animal-free production

Anti-Spermine synthase antibody [EPR9252(B)]
(ab156879)

Please note: All products are "FOR RESEARCH USE ONLY. NOT FOR USE IN DIAGNOSTIC PROCEDURES"

Our Abpromise to you: Quality guaranteed and expert technical support

- Replacement or refund for products not performing as stated on the datasheet
- Valid for 12 months from date of delivery
- Response to your inquiry within 24 hours
- We provide support in Chinese, English, French, German, Japanese and Spanish
- Extensive multi-media technical resources to help you
- We investigate all quality concerns to ensure our products perform to the highest standards

If the product does not perform as described on this datasheet, we will offer a refund or replacement. For full details of the Abpromise, please visit <https://www.abcam.co.jp/abpromise> or contact our technical team.

Terms and conditions

- Guarantee only valid for products bought direct from Abcam or one of our authorized distributors