


### Anti-SPARC antibody [SP205] ab225716

リコンビナント **RabMAb**

**4 References**    **画像数 15**

#### 製品の概要

製品名	Anti-SPARC antibody [SP205]
製品の詳細	Rabbit monoclonal [SP205] to SPARC
由来種	Rabbit
アプリケーション	<b>適用あり:</b> WB, IHC-P, ICC/IF, Flow Cyt (Intra)
種交差性	<b>交差種:</b> Human <b>交差が予測される動物種:</b> Rabbit, Cow, Pig 
免疫原	Synthetic peptide. This information is proprietary to Abcam and/or its suppliers.
ポジティブ・コントロール	IHC-P: Human kidney, stomach adenocarcinoma, colon adenocarcinoma, renal cell carcinoma, breast ductal carcinoma, lung squamos cell carcinoma, pancreatic adenocarcinoma, tonsil, placenta, testis and cerebellum tissues. WB: HUVEC and Jurkat whole cell lysate ( <b>ab7899</b> ). Flow Cyt (Intra): A375 cells. ICC/IF: A375 cells.
特記事項	<p>This product is a recombinant monoclonal antibody, which offers several advantages including:</p> <ul style="list-style-type: none"> <li>- High batch-to-batch consistency and reproducibility</li> <li>- Improved sensitivity and specificity</li> <li>- Long-term security of supply</li> <li>- Animal-free production</li> </ul> <p>For more information <a href="#">see here</a>.</p> <p><b>This product is FOR RESEARCH USE ONLY. For commercial use, please contact <a href="mailto:partnerships@abcam.com">partnerships@abcam.com</a>.</b></p>

#### 製品の特性

製品の状態	Liquid
保存方法	Shipped at 4°C. Store at +4°C short term (1-2 weeks). Upon delivery aliquot. Store at -20°C long term. Avoid freeze / thaw cycle.
バッファー	<p>pH: 7.60</p> <p>Preservative: 0.1% Sodium azide</p> <p>Constituents: PBS, 1% BSA</p>
精製度	Protein A/G purified

特記事項(精製)	Purified from TCS by protein A/G.
ポリ/モノ	モノクローナル
クローン名	SP205
アイソタイプ	IgG

## アプリケーション

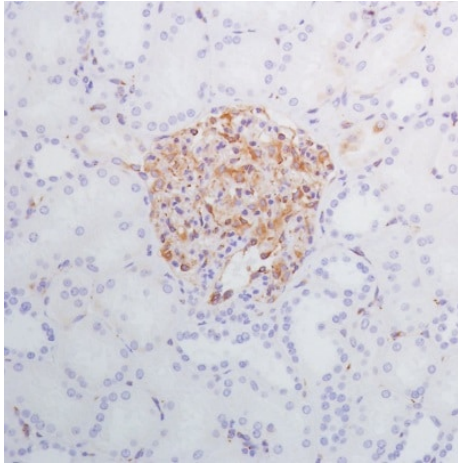
**The Abpromise guarantee**      **Abpromise保証は、次のテスト済みアプリケーションにおけるab225716の使用に適用されます**  
 アプリケーションノートには、推奨の開始希釈率がありますが、適切な希釈率につきましてはご検討ください。

アプリケーション	Abreviews	特記事項
WB		1/400. Predicted molecular weight: 35 kDa. Primary incubation for 1 hour at room temperature.
IHC-P		1/100. Perform heat mediated antigen retrieval with citrate buffer pH 6 before commencing with IHC staining protocol. Primary incubation for 10 minutes at room temperature.
ICC/IF		1/15.
Flow Cyt (Intra)		1/200.

## ターゲット情報

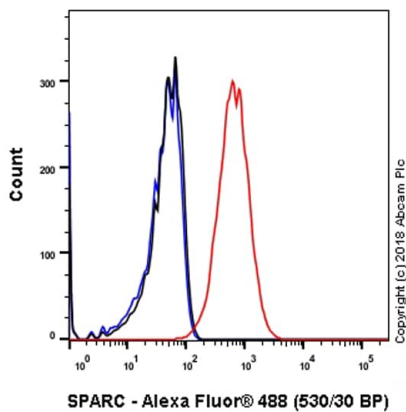
機能	Appears to regulate cell growth through interactions with the extracellular matrix and cytokines. Binds calcium and copper, several types of collagen, albumin, thrombospondin, PDGF and cell membranes. There are two calcium binding sites; an acidic domain that binds 5 to 8 Ca(2+) with a low affinity and an EF-hand loop that binds a Ca(2+) ion with a high affinity.
配列類似性	Belongs to the SPARC family. Contains 1 EF-hand domain. Contains 1 follistatin-like domain. Contains 1 Kazal-like domain.
発生段階	Expressed at high levels in tissues undergoing morphogenesis, remodeling and wound repair.
細胞内局在	Secreted > extracellular space > extracellular matrix > basement membrane. In or around the basement membrane.

## 画像



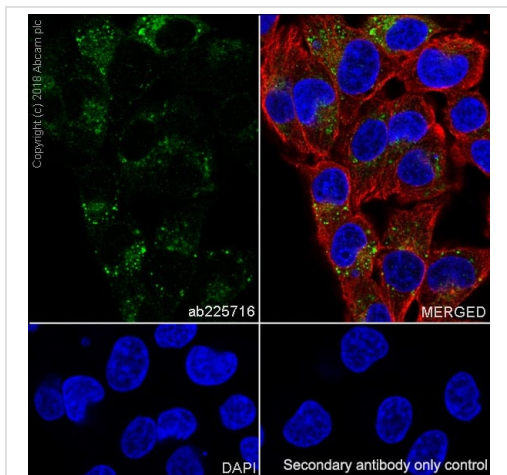
Immunohistochemistry (Formalin/PFA-fixed paraffin-embedded sections) - Anti-SPARC antibody [SP205] (ab225716)

Formalin-fixed, paraffin-embedded human kidney tissue stained for SPARC using ab225716 at 1/100 dilution in immunohistochemical analysis.



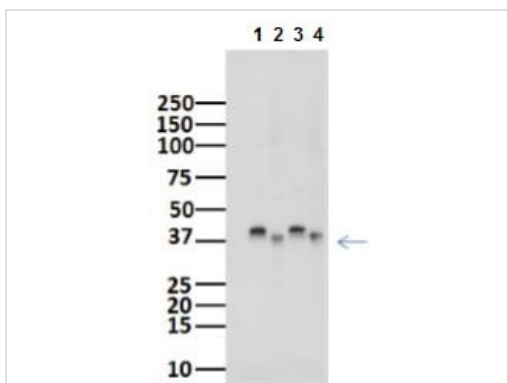
Flow Cytometry (Intracellular) - Anti-SPARC antibody [SP205] (ab225716)

Flow Cytometry analysis of A375 (Human malignant melanoma epithelial cell) cells labeling SPARC with purified ab225716 at 1:200 dilution (0.595 µg/ml) Red. Cells were fixed with 4% paraformaldehyde. A Goat anti rabbit IgG (Alexa Fluor® 488, **ab150077**) secondary antibody was used at 1:2000 dilution. Isotype control - Rabbit monoclonal IgG (**ab172730**) / Black. Unlabeled control - Unlabelled cells / Blue.



Immunocytochemistry/ Immunofluorescence - Anti-SPARC antibody [SP205] (ab225716)

Immunocytochemistry/ Immunofluorescence analysis of A375 (human malignant melanoma epithelial cell) cells labeling SPARC with purified ab225716 at 1:15 (7.9 µg/ml). Cells were fixed in 4% paraformaldehyde and permeabilized with 0.1% Triton X-100. Cells were counterstained with Ab195889 Anti-alpha Tubulin antibody [DM1A] - Microtubule Marker (Alexa Fluor® 594) 1:200 (2.5 µg/ml). Goat anti rabbit IgG (Alexa Fluor® 488, **ab150077**) was used as the secondary antibody at 1:1000 (2 µg/ml) dilution. DAPI nuclear counterstain. PBS instead of the primary antibody was used as the secondary antibody only control.



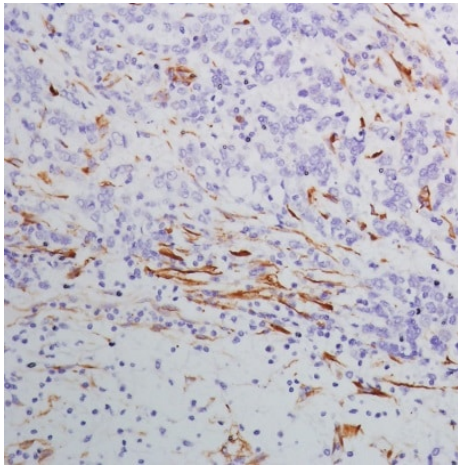
Western blot - Anti-SPARC antibody [SP205] (ab225716)

**All lanes** : Anti-SPARC antibody [SP205] (ab225716) at 1/400 dilution

**Lanes 1 & 3** : HUVEC (human umbilical vein endothelial cell line) cell lysate

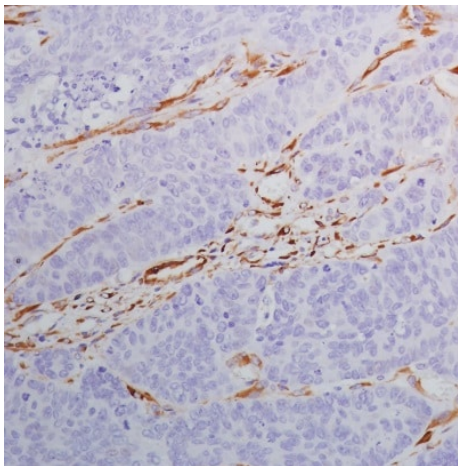
**Lanes 2 & 4** : Jurkat (human T cell leukemia cell line from peripheral blood) cell lysate

**Predicted band size:** 35 kDa



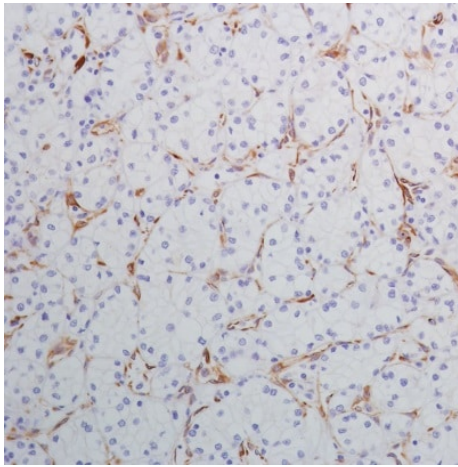
Formalin-fixed, paraffin-embedded human stomach adenocarcinoma tissue stained for SPARC using ab225716 at 1/100 dilution in immunohistochemical analysis.

Immunohistochemistry (Formalin/PFA-fixed paraffin-embedded sections) - Anti-SPARC antibody [SP205] (ab225716)



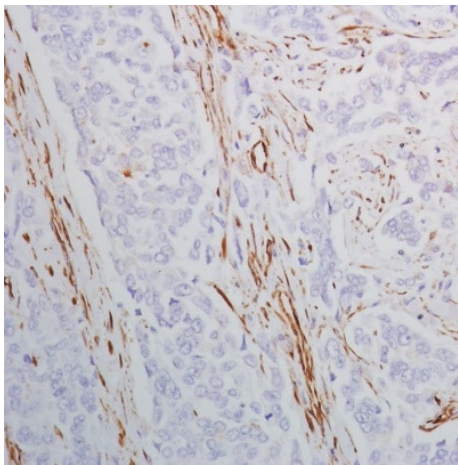
Formalin-fixed, paraffin-embedded human colon adenocarcinoma tissue stained for SPARC using ab225716 at 1/100 dilution in immunohistochemical analysis.

Immunohistochemistry (Formalin/PFA-fixed paraffin-embedded sections) - Anti-SPARC antibody [SP205] (ab225716)



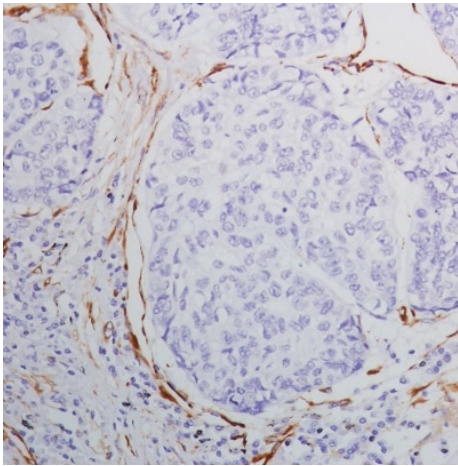
Formalin-fixed, paraffin-embedded human renal cell carcinoma tissue stained for SPARC using ab225716 at 1/100 dilution in immunohistochemical analysis.

Immunohistochemistry (Formalin/PFA-fixed paraffin-embedded sections) - Anti-SPARC antibody [SP205] (ab225716)



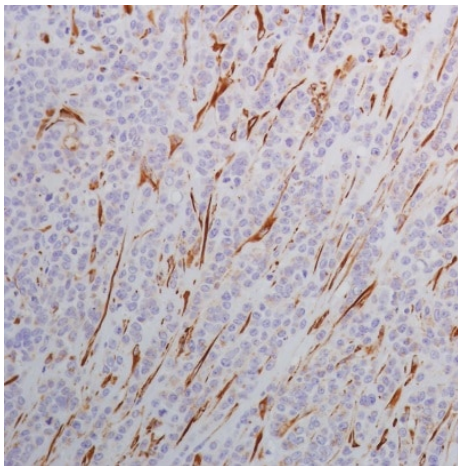
Formalin-fixed, paraffin-embedded human breast ductal carcinoma tissue stained for SPARC using ab225716 at 1/100 dilution in immunohistochemical analysis.

Immunohistochemistry (Formalin/PFA-fixed paraffin-embedded sections) - Anti-SPARC antibody [SP205] (ab225716)



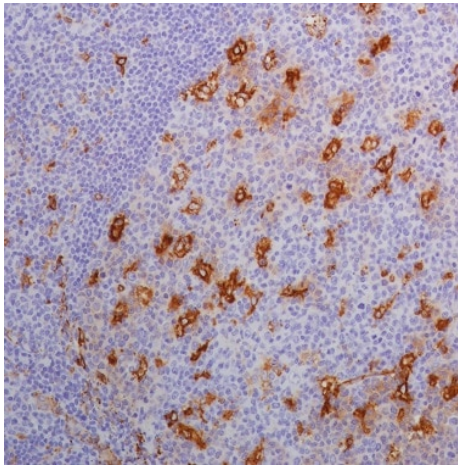
Formalin-fixed, paraffin-embedded human lung squamos cell carcinoma tissue stained for SPARC using ab225716 at 1/100 dilution in immunohistochemical analysis.

Immunohistochemistry (Formalin/PFA-fixed paraffin-embedded sections) - Anti-SPARC antibody [SP205] (ab225716)



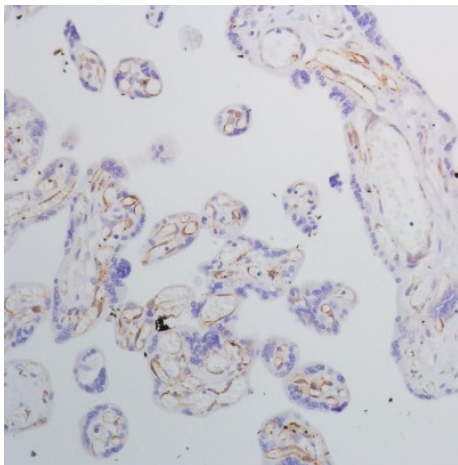
Formalin-fixed, paraffin-embedded human pancreatic adenocarcinoma tissue stained for SPARC using ab225716 at 1/100 dilution in immunohistochemical analysis.

Immunohistochemistry (Formalin/PFA-fixed paraffin-embedded sections) - Anti-SPARC antibody [SP205] (ab225716)



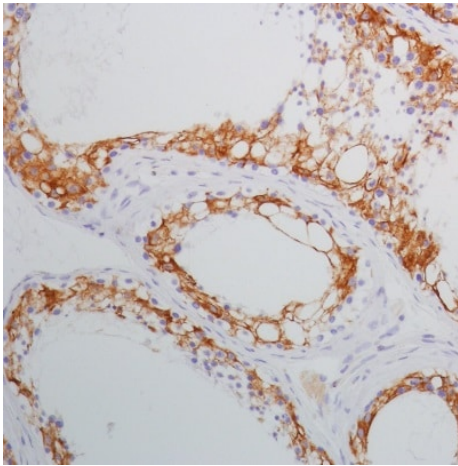
Formalin-fixed, paraffin-embedded human tonsil tissue stained for SPARC using ab225716 at 1/100 dilution in immunohistochemical analysis.

Immunohistochemistry (Formalin/PFA-fixed paraffin-embedded sections) - Anti-SPARC antibody [SP205] (ab225716)



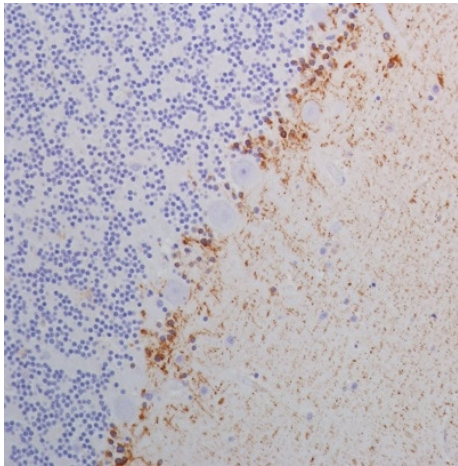
Formalin-fixed, paraffin-embedded human placenta tissue stained for SPARC using ab225716 at 1/100 dilution in immunohistochemical analysis.

Immunohistochemistry (Formalin/PFA-fixed paraffin-embedded sections) - Anti-SPARC antibody [SP205] (ab225716)



Formalin-fixed, paraffin-embedded human testis tissue stained for SPARC using ab225716 at 1/100 dilution in immunohistochemical analysis.

Immunohistochemistry (Formalin/PFA-fixed paraffin-embedded sections) - Anti-SPARC antibody [SP205] (ab225716)



Formalin-fixed, paraffin-embedded human cerebellum tissue stained for SPARC using ab225716 at 1/100 dilution in immunohistochemical analysis.

Immunohistochemistry (Formalin/PFA-fixed paraffin-embedded sections) - Anti-SPARC antibody [SP205] (ab225716)

### Why choose a recombinant antibody?



**Research with confidence**  
Consistent and reproducible results



**Long-term and scalable supply**  
Recombinant technology



**Success from the first experiment**  
Confirmed specificity



**Ethical standards compliant**  
Animal-free production

Anti-SPARC antibody [SP205] (ab225716)

**Please note:** All products are "FOR RESEARCH USE ONLY. NOT FOR USE IN DIAGNOSTIC PROCEDURES"

### Our Abpromise to you: Quality guaranteed and expert technical support

---

- Replacement or refund for products not performing as stated on the datasheet
- Valid for 12 months from date of delivery
- Response to your inquiry within 24 hours
- We provide support in Chinese, English, French, German, Japanese and Spanish
- Extensive multi-media technical resources to help you
- We investigate all quality concerns to ensure our products perform to the highest standards

If the product does not perform as described on this datasheet, we will offer a refund or replacement. For full details of the Abpromise, please visit <https://www.abcam.co.jp/abpromise> or contact our technical team.

### Terms and conditions

---

- Guarantee only valid for products bought direct from Abcam or one of our authorized distributors