

Anti-SOX9 (phospho S181) antibody ab59252

★★★★★ [3 Abreviews](#) [20 References](#) [画像数 3](#)

製品の概要

製品名	Anti-SOX9 (phospho S181) antibody
製品の詳細	Rabbit polyclonal to SOX9 (phospho S181)
由来種	Rabbit
アプリケーション	適用あり: IHC-P, WB
種交差性	交差種: Human
免疫原	Synthetic peptide corresponding to Human SOX9 aa 100-200 (phospho S181). (R-K-SP-V-K). Database link: P48436
特記事項	<p>The Life Science industry has been in the grips of a reproducibility crisis for a number of years. Abcam is leading the way in addressing this with our range of recombinant monoclonal antibodies and knockout edited cell lines for gold-standard validation. Please check that this product meets your needs before purchasing.</p> <p>If you have any questions, special requirements or concerns, please send us an inquiry and/or contact our Support team ahead of purchase. Recommended alternatives for this product can be found below, along with publications, customer reviews and Q&As</p>

製品の特性

製品の状態	Liquid
保存方法	Shipped at 4°C. Store at -20°C. Stable for 12 months at -20°C.
バッファー	<p>pH: 7.40</p> <p>Preservative: 0.02% Sodium azide</p> <p>Constituents: PBS, 50% Glycerol, 0.87% Sodium chloride</p> <p>Without Mg+2 and Ca+2</p>
精製度	Immunogen affinity purified
特記事項 (精製)	Affinity-purified from rabbit antiserum by affinity-chromatography using epitope-specific phosphopeptide. The antibody against the non-phosphopeptide was removed by chromatography using non-phosphopeptide corresponding to the phosphorylation site.
ポリ/モノ	ポリクローナル
アイソタイプ	IgG

アプリケーション

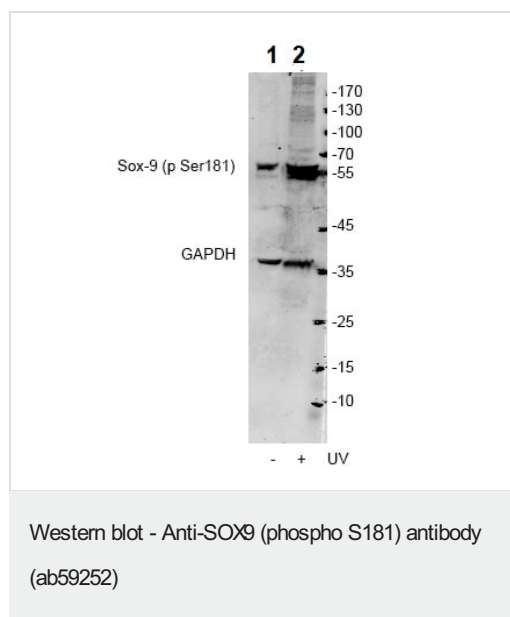
The Abpromise guarantee **Abpromise保証は、次のテスト済みアプリケーションにおけるab59252の使用に適用されます**
アプリケーションノートには、推奨の開始希釈率がありますが、適切な希釈率につきましてはご確認ください。

アプリケーション	Abreviews	特記事項
IHC-P		1/50 - 1/100.
WB	★★★★★ (2)	1/500 - 1/1000. Detects a band of approximately 56 kDa (predicted molecular weight: 56 kDa).

ターゲット情報

機能	Plays an important role in the normal skeletal development. May regulate the expression of other genes involved in chondrogenesis by acting as a transcription factor for these genes.
関連疾患	Defects in SOX9 are the cause of campomelic dysplasia (CMD1) [MIM:114290]. CMD1 is a rare, often lethal, dominantly inherited, congenital osteochondrodysplasia, associated with male-to-female autosomal sex reversal in two-thirds of the affected karyotypic males. A disease of the newborn characterized by congenital bowing and angulation of long bones, unusually small scapulae, deformed pelvis and spine and a missing pair of ribs. Craniofacial defects such as cleft palate, micrognathia, flat face and hypertelorism are common. Various defects of the ear are often evident, affecting the cochlea, malleus incus, stapes and tympanum. Most patients die soon after birth due to respiratory distress which has been attributed to hypoplasia of the tracheobronchial cartilage and small thoracic cage.
配列類似性	Contains 1 HMG box DNA-binding domain.
細胞内局在	Nucleus.

画像



All lanes : Anti-SOX9 (phospho S181) antibody (ab59252) at 1/5000 dilution

Lane 1 : HepG2 cell lysate

Lane 2 : HepG2 cell lysate treated with UV

Lysates/proteins at 50 µg per lane.

Secondary

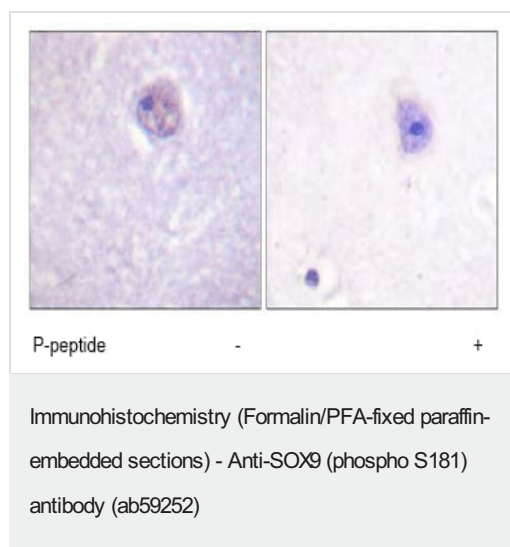
All lanes : Goat Anti-Rabbit IgG (H+L) HRP at 1/10000 dilution

Predicted band size: 56 kDa

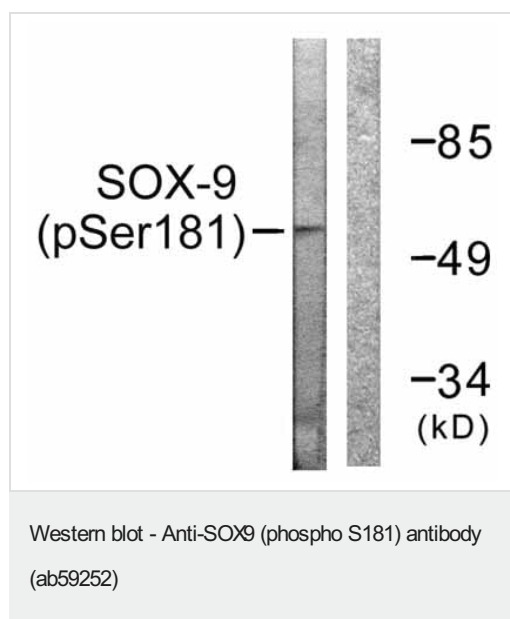
Loading control = GAPDH

10% SDS-PAGE

Primary incubation: 4°C overnight



ab59252 at 1/50 dilution staining SOX9 in human brain by Immunohistochemistry, Paraffin embedded tissue, in the absence or presence of the immunising peptide.



All lanes : Anti-SOX9 (phospho S181) antibody (ab59252) at 1/500 dilution

Lane 1 : 293 cell extracts treated with PBS (60mins)

Lane 2 : 293 cell extracts treated with PBS (60mins) with immunizing phospho-peptide

Predicted band size: 56 kDa

Observed band size: 56 kDa

Please note: All products are "FOR RESEARCH USE ONLY. NOT FOR USE IN DIAGNOSTIC PROCEDURES"

Our Abpromise to you: Quality guaranteed and expert technical support

- Replacement or refund for products not performing as stated on the datasheet
- Valid for 12 months from date of delivery
- Response to your inquiry within 24 hours
- We provide support in Chinese, English, French, German, Japanese and Spanish
- Extensive multi-media technical resources to help you

- We investigate all quality concerns to ensure our products perform to the highest standards

If the product does not perform as described on this datasheet, we will offer a refund or replacement. For full details of the Abpromise, please visit <https://www.abcam.co.jp/abpromise> or contact our technical team.

Terms and conditions

- Guarantee only valid for products bought direct from Abcam or one of our authorized distributors