




Anti-SORBS1 antibody ab4551

★★★★★ [1 Abreviews](#) [2 References](#) [画像数 2](#)

製品の概要

製品名	Anti-SORBS1 antibody
製品の詳細	Goat polyclonal to SORBS1
由来種	Goat
特異性	This antibody is expected to recognise both human isoforms.
アプリケーション	適用あり: WB, IHC-P
種交差性	交差種: Human 交差が予測される動物種: Mouse, Rat 
免疫原	Synthetic peptide corresponding to Human SORBS1 aa 800-900 (C terminal). (NP_056200.1; NP_001030126.1; NP_001030127.1; NP_001030128.1; NP_079267.1; NP_001030129.1) Database link: NP_006425.2  Run BLAST with  Run BLAST with
特記事項	<p>The Life Science industry has been in the grips of a reproducibility crisis for a number of years. Abcam is leading the way in addressing this with our range of recombinant monoclonal antibodies and knockout edited cell lines for gold-standard validation. Please check that this product meets your needs before purchasing.</p> <p>If you have any questions, special requirements or concerns, please send us an inquiry and/or contact our Support team ahead of purchase. Recommended alternatives for this product can be found below, along with publications, customer reviews and Q&As</p>

製品の特性

製品の状態	Liquid
保存方法	Shipped at 4°C. Upon delivery aliquot and store at -20°C or -80°C. Avoid repeated freeze / thaw cycles.
バッファー	pH: 7.3 Preservative: 0.02% Sodium azide Constituents: Tris buffered saline, 0.5% BSA
精製度	Immunogen affinity purified
特記事項 (精製)	Purified from goat serum by ammonium sulphate precipitation followed by antigen affinity chromatography using the immunizing peptide.
ポリ/モノ	ポリクローナル

アプリケーション

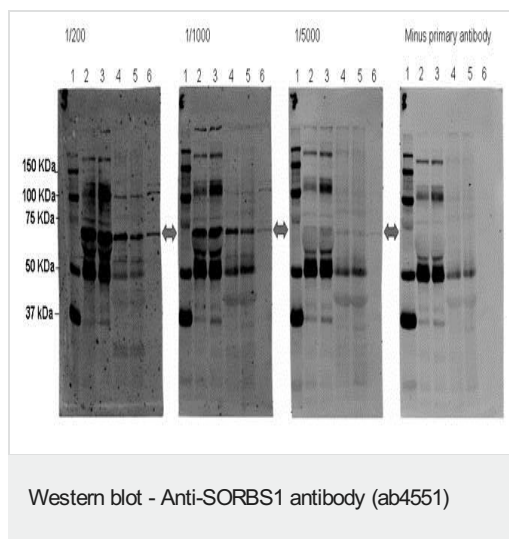
The Abpromise guarantee **Abpromise保証は、次のテスト済みアプリケーションにおけるab4551の使用に適用されます**
 アプリケーションノートには、推奨の開始希釈率がありますが、適切な希釈率につきましてはご確認ください。

アプリケーション	Abreviews	特記事項
WB	★★★★★ (1)	Use at an assay dependent concentration. A 1 hour primary incubation is recommended for this product. No signal obtained yet but low background observed in human heart and 293 lysates at up to 2 µg/ml.
IHC-P		Use a concentration of 2.5 µg/ml. Perform heat mediated antigen retrieval before commencing with IHC staining protocol.

ターゲット情報

機能	Plays a role in tyrosine phosphorylation of CBL by linking CBL to the insulin receptor. Required for insulin-stimulated glucose transport. Involved in formation of actin stress fibers and focal adhesions.
組織特異性	Detected in skeletal muscle (at protein level). Widely expressed with highest levels in heart and skeletal muscle.
配列類似性	Contains 3 SH3 domains. Contains 1 SoHo domain.
翻訳後修飾	O-glycosylated.
細胞内局在	Cell junction > adherens junction. Cell membrane. Cytoplasm > cytoskeleton. Cell junction > focal adhesion. Colocalizes with actin stress fibers. Also detected at the plasma membrane and in neuronal intranuclear inclusions. Colocalized with PXN at focal adhesions during myogenic differentiation.

画像



All lanes : Anti-SORBS1 antibody (ab4551)

Lane 1 : Molecular weight marker (Bio-Rad Precision Plus Kaleidoscope standards)

Lane 2 : 10 μ l Human plasma 1 (600-800 μ g protein)

Lane 3 : 10 μ l Human plasma 2 (600-800 μ g protein)

Lane 4 : 10 μ l Human White Blood cells 1 (30-50 μ g protein)

Lane 5 : 10 μ l Human White Blood cells 2 (30-50 μ g protein)

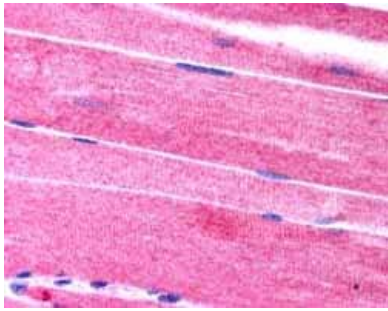
Lane 6 : 10 μ l HEK293 whole cell lysate (prepared by scrapping 10 cm confluent dish into 4ml of 2x sample buffer (Sigma)

Secondary

All lanes : Donkey anti-goat IgG (H+L) conjugated to Alexa-Fluor680 at 1/5000 dilution

ab4551 was tested in human plasma, human white blood cells and HEK293 cells. Samples were run for 1h at 200 V using the Fisherbrand vertical complete gel unit, and transferred onto nitrocellulose 0.45 μ m (1h, 100V, 4 C) using the Bio-rad Trans blot cell with plate electrodes. Membranes were blocked for 1 h at RT, then incubated overnight in primary antibody (1/200, 1/1000, 1/5000 or minus primary antibody) at 4 degrees C, with shaking. Following washing, membranes were incubated in secondary antibody (1/5000, Alexa-Fluor680 donkey anti-goat IgG, H+L) for 1 h at RT. Antibody binding was detected using LI-COR Bioscience's Odyssey Infrared Imaging system (intensity 5). The molecular weight of sorbs 1 was calculated using 'Compute pI/MW' from ExPASy tools based on the amino acid sequence according to NP_006425. The band indicated is approximately this predicted molecular weight, and is not present in the minus primary image, scanned at the same intensity.

Image courtesy of



Immunohistochemistry (Formalin/PFA-fixed paraffin-embedded sections) - Anti-SORBS1 antibody (ab4551)

ab4551 (2.5 µg/ml) staining SORBS1 in Human Skeletal Muscle by IHC-P. Steamed antigen retrieval in citrate buffer pH6, AP-staining. This image shows spotty staining on muscle fibres in longitudinal section.

Please note: All products are "FOR RESEARCH USE ONLY. NOT FOR USE IN DIAGNOSTIC PROCEDURES"

Our Abpromise to you: Quality guaranteed and expert technical support

- Replacement or refund for products not performing as stated on the datasheet
- Valid for 12 months from date of delivery
- Response to your inquiry within 24 hours
- We provide support in Chinese, English, French, German, Japanese and Spanish
- Extensive multi-media technical resources to help you
- We investigate all quality concerns to ensure our products perform to the highest standards

If the product does not perform as described on this datasheet, we will offer a refund or replacement. For full details of the Abpromise, please visit <https://www.abcam.co.jp/abpromise> or contact our technical team.

Terms and conditions

- Guarantee only valid for products bought direct from Abcam or one of our authorized distributors