


Anti-Somatostatin Receptor 2 antibody [UMB1] - BSA and Azide free ab271907

リコンビナント **RabMAb**

画像数 6

製品の概要

| | |
|--------------|--|
| 製品名 | Anti-Somatostatin Receptor 2 antibody [UMB1] - BSA and Azide free |
| 製品の詳細 | Rabbit monoclonal [UMB1] to Somatostatin Receptor 2 - BSA and Azide free |
| 由来種 | Rabbit |
| アプリケーション | 適用あり: WB, IP, IHC-P 適用なし: Flow Cyt, ICC/IF or IHC-Fr |
| 種交差性 | 交差種: Human 交差が予測される動物種: Mouse, Rat  |
| 免疫原 | Synthetic peptide. This information is proprietary to Abcam and/or its suppliers. (Peptide available as ab134152) |
| ポジティブ・コントロール | WB: Human and mouse brain tissue lysate. U937, INS-1 and Somatostatin Receptor 2 transfected HEK-293 cell lysates. IHC-P: Human pancreas, brain and breast carcinoma tissues. |
| 特記事項 | <p>ab271907 is the carrier-free version of ab134152.</p> <p>Our carrier-free antibodies are typically supplied in a PBS-only formulation, purified and free of BSA, sodium azide and glycerol. The carrier-free buffer and high concentration allow for increased conjugation efficiency.</p> <p>This conjugation-ready format is designed for use with fluorochromes, metal isotopes, oligonucleotides, and enzymes, which makes them ideal for antibody labelling, functional and cell-based assays, flow-based assays (e.g. mass cytometry) and Multiplex Imaging applications.</p> <p>Use our conjugation kits for antibody conjugates that are ready-to-use in as little as 20 minutes with <1 minute hands-on-time and 100% antibody recovery: available for fluorescent dyes, HRP, biotin and gold.</p> <p>This product is compatible with the Maxpar[®] Antibody Labeling Kit from Fluidigm, without the need for antibody preparation. Maxpar[®] is a trademark of Fluidigm Canada Inc.</p> <p>This product is a recombinant monoclonal antibody, which offers several advantages including:</p> <ul style="list-style-type: none"> - High batch-to-batch consistency and reproducibility - Improved sensitivity and specificity - Long-term security of supply - Animal-free production <p>For more information see here.</p> |

Our RabMAb[®] technology is a patented hybridoma-based technology for making rabbit monoclonal antibodies. For details on our patents, please refer to [RabMAb[®] patents](#).

製品の特性

| | |
|----------|---|
| 製品の状態 | Liquid |
| 保存方法 | Shipped at 4°C. Store at +4°C. Do Not Freeze. |
| バッファー | pH: 7.2 Constituent: PBS |
| キャリア・フリー | はい |
| 精製度 | Protein A purified |
| ポリ/モノ | モノクローナル |
| クローン名 | UMB1 |
| アイソタイプ | IgG |

アプリケーション

The Abpromise guarantee **Abpromise保証は、**次のテスト済みアプリケーションにおけるab271907の使用に適用されます
アプリケーションノートには、推奨の開始希釈率がありますが、適切な希釈率につきましてはご確認ください。

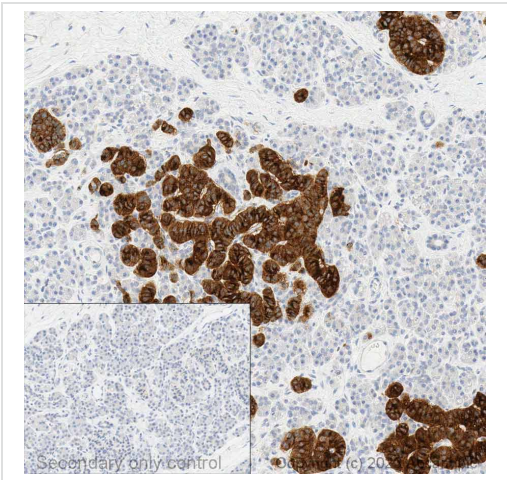
| アプリケーション | Abreviews | 特記事項 |
|----------|-----------|---|
| WB | | Use at an assay dependent concentration. Predicted molecular weight: 41 kDa. Can be blocked with <u>Rabbit monoclonal [UMB1] to Somatostatin Receptor 2 - C-terminal (ab134152)</u> . This antibody works better in 1%SDS Hot Lysates in WB. For Lysate preparation protocol, please refer to the protocol book in the protocol section and/or here (downloadable copy). |
| IP | | Use at an assay dependent concentration. |
| IHC-P | | Use at an assay dependent concentration. Perform heat mediated antigen retrieval with citrate buffer pH 6 before commencing with IHC staining protocol. |

追加情報 Is unsuitable for Flow Cyt, ICC/IF or IHC-Fr.

ターゲット情報

| | |
|-------|---|
| 機能 | Receptor for somatostatins-14 and -28. This receptor is coupled via pertussis toxin sensitive G proteins to inhibition of adenylyl cyclase. In addition it stimulates phosphotyrosine phosphatase and PLC via pertussis toxin insensitive as well as sensitive G proteins. In RIN-5F cells, this receptor inhibits calcium entry by suppressing voltage dependent calcium-channels. |
| 組織特異性 | Cerebrum and kidney. In lesser amounts in jejunum, colon and liver. |
| 配列類似性 | Belongs to the G-protein coupled receptor 1 family. |

画像



Immunohistochemistry (Formalin/PFA-fixed paraffin-embedded sections) - Anti-Somatostatin Receptor 2 antibody [UMB1] - BSA and Azide free (ab271907)

Immunohistochemical analysis of formalin-fixed paraffin-embedded human pancreas labelling somatostatin receptor 2 with [ab134152](#) at a concentration of 0.2µg/ml. The immunostaining was performed on a Ventana DISCOVERY ULTRA (Roche Tissue Diagnostics) instrument with an OptiView DAB IHC Detection Kit. Heat mediated antigen retrieval was conducted for 32min with ULTRA cell conditioning solution (CC1 pH8.5). [ab134152](#) anti somatostatin receptor 2 antibody was incubated at 37°C for 16min. Sections were counterstained is with Hematoxylin II. Image inset shows absence of staining in secondary antibody only control.

This data was developed using the same antibody clone in a different buffer formulation containing PBS, BSA, glycerol, and sodium azide ([ab134152](#)).

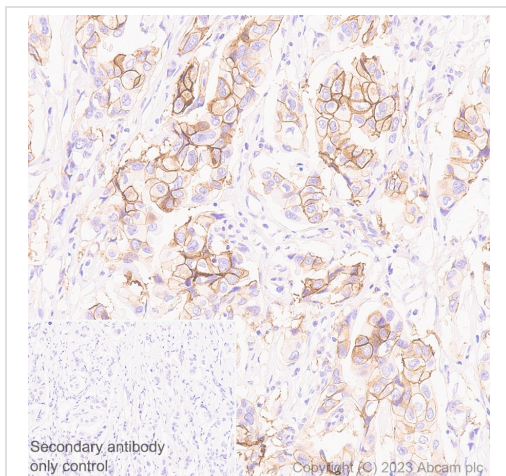
| Tissue Microarray (TMA) data for ab134152 | | | | | | | | | |
|---|-------------------------|-----------------------|--------------------|--|--------------------------------------|-------------------------|--------------------------------|-------------------------|---|
| Normal tissue samples | | | | | Malignant tissue samples | | | | |
| Human cardiac muscle | x | Human placenta | x (immune cells v) | | Clear cell carcinoma of human kidney | x (endothelial cells v) | Human glioma | | ✓ |
| Human cerebrum | ✓ | Human skeletal muscle | x | | Human bladder cancer | x (endothelial cells v) | Human hepatocellular carcinoma | | ✓ |
| Human colon | ✓ | Human skin | x | | Human breast carcinoma | ✓ | Human lung carcinoma | x (immune cells v) | |
| Human endometrium | x | Human spleen | ✓ | | Human cervical carcinoma | x (endothelial cells v) | Human ovarian carcinoma | x | |
| Human kidney | ✓ | Human stomach | ✓ | | Human colon carcinoma | x (endothelial cells v) | Human pancreatic carcinoma | x (immune cells v) | |
| Human liver | x | Human testis | x | | Human endometrial carcinoma | x (endothelial cells v) | Human prostatic hyperplasia | x (endothelial cells v) | |
| Human lung | x | Human thyroid | x | | Human gastric adenocarcinoma | x | Human thyroid carcinoma | x (endothelial cells v) | |
| Human mammary gland | x | Human tonsil | ✓ | | | | | | |
| Human pancreas | x (pancreatic islets v) | | | | | | | | |

Immunohistochemistry (Formalin/PFA-fixed paraffin-embedded sections) - Anti-Somatostatin Receptor 2 antibody [UMB1] - BSA and Azide free (ab271907)

This data was developed using the same antibody clone in a different buffer formulation containing PBS, BSA, glycerol, and sodium azide ([ab134152](#)).

Tissue Microarrays stained for Anti-Somatostatin Receptor 2 antibody [UMB1] using [ab134152](#) in immunohistochemical analysis. This table provides a detailed overview of positive (tick mark) and negative (cross mark) staining per sample type tested. The sections were incubated with [ab134152](#) for 30 mins at room temperature used at 1:2000 dilution (0.928 µg/ml) followed by a ready to use LeicaDS9800 (Bond™ Polymer Refine Detection) secondary antibody. Counterstain was Hematoxylin.

Heat mediated antigen retrieval was performed with Tris-EDTA buffer (pH 9.0, Epitope Retrieval Solution2) for 20 mins. The immunostaining was performed on a Leica Biosystems BOND® RX instrument.



Immunohistochemistry (Formalin/PFA-fixed paraffin-embedded sections) - Anti-Somatostatin Receptor 2 antibody [UMB1] - BSA and Azide free (ab271907)

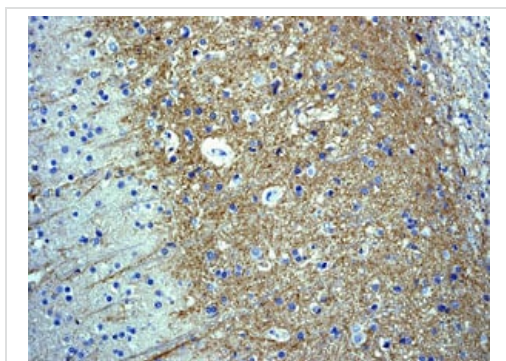
Immunohistochemical analysis of paraffin-embedded human breast carcinoma tissue labelling Somatostatin Receptor 2 with **ab134152** at 1/2000 dilution (0.928 µg/ml) followed by a LeicaDS9800 (Bond™ Polymer Refine Detection) at a ready to use dilution. Positive staining on human breast carcinoma. The section was incubated with **ab134152** for 30 mins at room temperature.

The immunostaining was performed on a Leica Biosystems BOND® RX instrument Counterstained with Hematoxylin.

Secondary antibody only control: Secondary antibody is LeicaDS9800 (Bond™ Polymer Refine Detection) at a ready to use dilution.

Heat mediated antigen retrieval was performed with Tris-EDTA buffer (pH 9.0, Epitope Retrieval Solution2) for 20 mins.

This data was developed using the same antibody clone in a different buffer formulation containing PBS, BSA, glycerol, and sodium azide (**ab134152**).

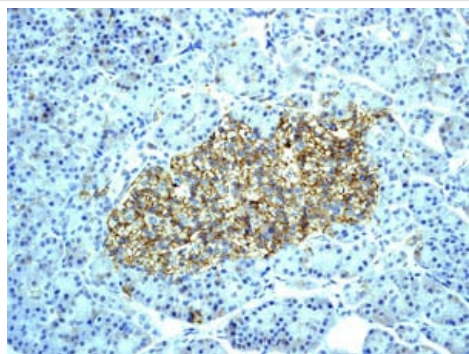


Immunohistochemistry (Formalin/PFA-fixed paraffin-embedded sections) - Anti-Somatostatin Receptor 2 antibody [UMB1] - BSA and Azide free (ab271907)

Immunohistochemical analysis of paraffin embedded human brain tissue labeled with **ab134152** at 1/100 dilution.

Perform heat mediated antigen retrieval with citrate buffer pH 6 before commencing with IHC staining protocol.

This data was developed using the same antibody clone in a different buffer formulation containing PBS, BSA, glycerol, and sodium azide (**ab134152**).



Immunohistochemistry (Formalin/PFA-fixed paraffin-embedded sections) - Anti-Somatostatin Receptor 2 antibody [UMB1] - BSA and Azide free (ab271907)

Immunohistochemical analysis of paraffin embedded human pancreas tissue labeled with **ab134152** at 1/100 dilution.

Perform heat mediated antigen retrieval with citrate buffer pH 6 before commencing with IHC staining protocol.

This data was developed using the same antibody clone in a different buffer formulation containing PBS, BSA, glycerol, and sodium azide (**ab134152**).

Why choose a recombinant antibody?



Research with confidence
Consistent and reproducible results



Long-term and scalable supply
Recombinant technology



Success from the first experiment
Confirmed specificity



Ethical standards compliant
Animal-free production

Anti-Somatostatin Receptor 2 antibody [UMB1] - BSA and Azide free (ab271907)

Please note: All products are "FOR RESEARCH USE ONLY. NOT FOR USE IN DIAGNOSTIC PROCEDURES"

Our Abpromise to you: Quality guaranteed and expert technical support

- Replacement or refund for products not performing as stated on the datasheet
- Valid for 12 months from date of delivery
- Response to your inquiry within 24 hours
- We provide support in Chinese, English, French, German, Japanese and Spanish

- Extensive multi-media technical resources to help you
- We investigate all quality concerns to ensure our products perform to the highest standards

If the product does not perform as described on this datasheet, we will offer a refund or replacement. For full details of the Abpromise, please visit <https://www.abcam.co.jp/abpromise> or contact our technical team.

Terms and conditions

- Guarantee only valid for products bought direct from Abcam or one of our authorized distributors