

Anti-Somatostatin 28 antibody [EPR3359(2)] ab111912

リコンビナント **RabMAb**

★★★★★ **4 Abreviews** **5 References** 画像数 **11**

製品の概要

製品名	Anti-Somatostatin 28 antibody [EPR3359(2)]
製品の詳細	Rabbit monoclonal [EPR3359(2)] to Somatostatin 28
由来種	Rabbit
アプリケーション	適用あり: IHC-P, IHC-Fr, mlHC 適用なし: Flow Cyt, ICC/IF, IP or WB
種交差性	交差種: Mouse, Rat, Human
免疫原	Synthetic peptide. This information is proprietary to Abcam and/or its suppliers.
ポジティブ・コントロール	IHC-P: Human, rat and mouse pancreas tissue; IHC-Fr: Rat hippocampal and pancreas tissue, Mouse hippocampal and pancreas tissue. mlHC: Rat and human pancreas tissues.
特記事項	This product is a recombinant monoclonal antibody, which offers several advantages including: <ul style="list-style-type: none"> - High batch-to-batch consistency and reproducibility - Improved sensitivity and specificity - Long-term security of supply - Animal-free production For more information see here . Our RabMAb [®] technology is a patented hybridoma-based technology for making rabbit monoclonal antibodies. For details on our patents, please refer to RabMAb[®] patents .

製品の特性

製品の状態	Liquid
保存方法	Shipped at 4°C. Store at -20°C. Stable for 12 months at -20°C.
バッファー	pH: 7.20 Preservative: 0.05% Sodium azide Constituents: 0.1% BSA, 40% Glycerol (glycerin, glycerine), 9.85% Tris glycine, 50% Tissue culture supernatant
精製度	Tissue culture supernatant
ポリ/モノ	モノクローナル
クローン名	EPR3359(2)

アイソタイプIgG

アプリケーション

The Abpromise guarantee Abpromise保証は、次のテスト済みアプリケーションにおけるab111912の使用に適用されます
アプリケーションノートには、推奨の開始希釈率がありますが、適切な希釈率につきましてはご確認ください。

アプリケーション	Abreviews	特記事項
IHC-P	★★★★★ (4)	1/50 - 1/100. Perform heat mediated antigen retrieval with citrate buffer pH 6 before commencing with IHC staining protocol.
IHC-Fr		Use at an assay dependent concentration.
mlHC		1/2000 - 1/9000.

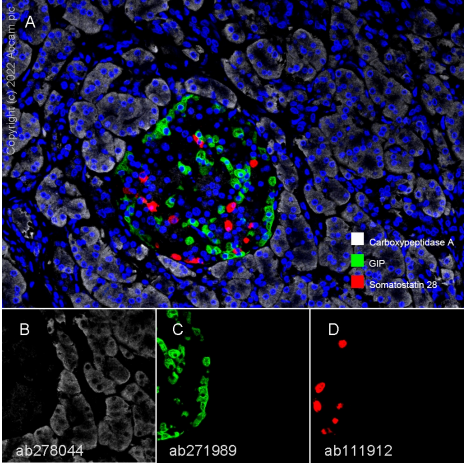
追加情報Is unsuitable for Flow Cyt, ICC/IF, IP or WB.

ターゲット情報

関連性The cyclic tetradecapeptide somatostatin 28 is widely distributed throughout the body and is an important regulator of endocrine and nervous system function. It exerts its biologic actions by binding to specific high affinity receptors on the cell surface.

細胞内局在Secreted

画像



Multiplex immunohistochemistry - Anti-Somatostatin 28 antibody [EPR3359(2)] (ab111912)

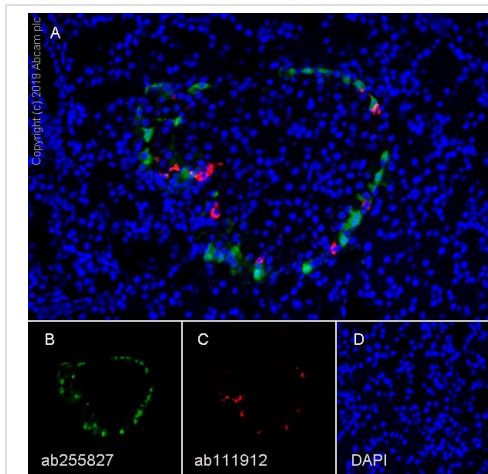
Fluorescence multiplex immunohistochemical analysis of the human pancreas (Formalin/PFA-fixed paraffin-embedded sections).

Panel A: merged staining of anti-Carboxypeptidase A ([ab278044](#), gray; Opal™690), anti-GIP ([ab271989](#), green; Opal™520) and anti-Somatostatin 28 ([ab111912](#), red; Opal™570) on human pancreas. Panel B: anti-Carboxypeptidase A stained on acinar cells. Panel C: anti-GIP stained on alpha cells. Panel D: anti-Somatostatin 28 stained on delta cells. Opal Polymer HRP Ms + Rb was used as a secondary antibody.

The section was incubated in three rounds of staining: in the order of [ab278044](#) at 1/4000 dilution (0.135 µg/ml), [ab271989](#) at 1/4000 dilution (0.27 µg/ml) and [ab111912](#) at 1/9000 dilution (0.068 µg/ml) for 30 mins at room temperature. Each round was followed by a separate fluorescent tyramide signal amplification system.

The immunostaining was performed on a Leica Biosystems BOND® RX instrument with an Opal™ 4-color kit. Image acquisition was performed with Leica SP8 confocal microscope.

Heat mediated antigen retrieval with Tris-EDTA buffer (pH 9.0, epitope retrieval solution2) for 20 mins. DAPI (blue) was used as a nuclear counter stain.



Multiplex immunohistochemistry - Anti-Somatostatin 28 antibody [EPR3359(2)] (ab111912)

Multiplex immunohistochemistry (Formalin/PFA-fixed paraffin-embedded sections) analysis of rat pancreas tissue.

Panel A: Merged staining of anti-Pancreatic Polypeptide (**ab255827**, green), anti-Somatostatin 28 (ab111912, red) and DAPI (blue).

Panel B: Anti-Pancreatic Polypeptide (green) stained on PP cells in rat pancreas islet.

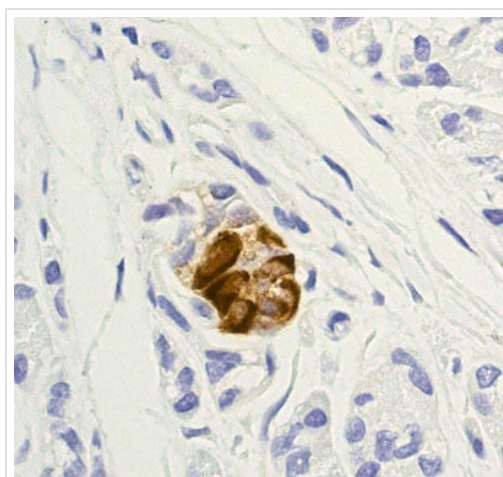
Panel C: Anti-Somatostatin 28 (red) stained on delta cells in rat pancreas islet.

Panel D: Nuclear counter stain, DAPI (blue).

Key protocol steps: The section was incubated in two rounds of staining with **ab255827** (1/20000 dilution) and ab111912 (1/2000 dilution) for 30 mins at room temperature. Each round was followed by tyramide signal amplification with the appropriate fluorophore. Heat mediated antigen retrieval was used (Tris-EDTA buffer (pH 9.0, epitope retrieval solution 2) for 20 mins after every round of antibody/fluorophore staining.

The immunostaining was performed on a Leica Biosystems BOND® RX instrument.

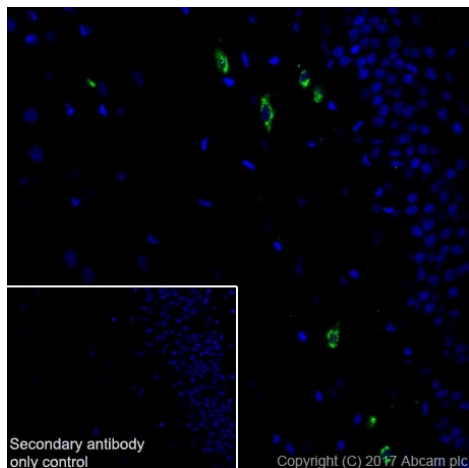
A ready-to-use anti-Rabbit and Mouse Polymer HRP was used as a secondary.



Immunohistochemistry (Formalin/PFA-fixed paraffin-embedded sections) - Anti-Somatostatin 28 antibody [EPR3359(2)] (ab111912)

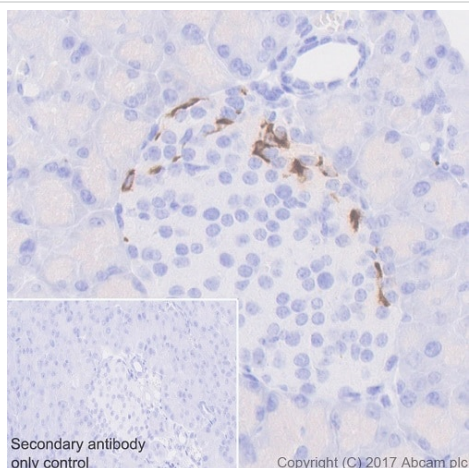
ab111912, at a 1/50 dilution, staining Somatostatin 28 in paraffin embedded Human pancreas tissue by Immunohistochemistry.

Perform heat mediated antigen retrieval with citrate buffer pH 6 before commencing with IHC staining protocol.



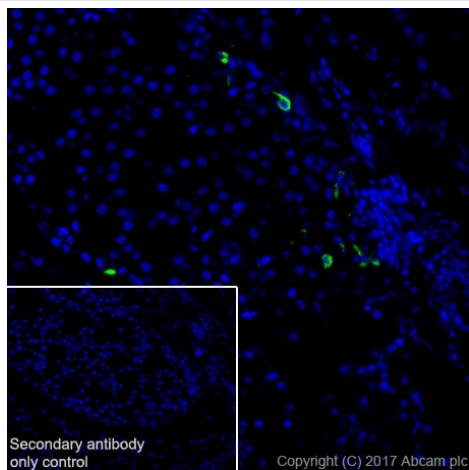
Immunohistochemistry (Frozen sections) - Anti-Somatostatin 28 antibody [EPR3359(2)] (ab111912)

Ab111912 staining Somatostatin-28 in Rat hippocampus tissue sections by Immunohistochemistry (IHC-Fr - frozen sections). Tissue was fixed with 4% paraformaldehyde and permeabilized with 0.2% TritonX-100. Heat mediated antigen retrieval was performed using a citrate solution (10mM citrate pH 6.0 + 0.05% Tween-20). Primary antibody was used at a 1:500 dilution. Ab150077 (1:1000) was used as the secondary antibody. Counterstained with DAPI. Cytoplasmic staining in the hilus of the dentate gyrus of rat hippocampus [PMID: 25469233] .



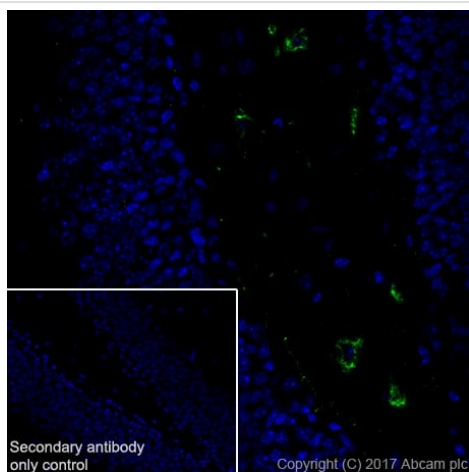
Immunohistochemistry (Formalin/PFA-fixed paraffin-embedded sections) - Anti-Somatostatin 28 antibody [EPR3359(2)] (ab111912)

ab111912 staining Somatostatin 28 in Mouse pancreas tissue sections by Immunohistochemistry (IHC-P - paraformaldehyde-fixed, paraffin-embedded sections). Heat mediated antigen retrieval in a TRIS/EDTA buffer pH9 ([ab93684](#)). Primary antibody at 1:4000 dilution and a Goat Anti- rabbit IgG H&L (HRP) was used as the secondary antibody. Couterstained with hematoxylin. Cytoplasmic staining on delta cells of mouse pancreas islet [PMID: 25019573], [PMID: 9066918], [BiologiaSerbica 2014, Vol. 36 No. 1-2 24-32] .



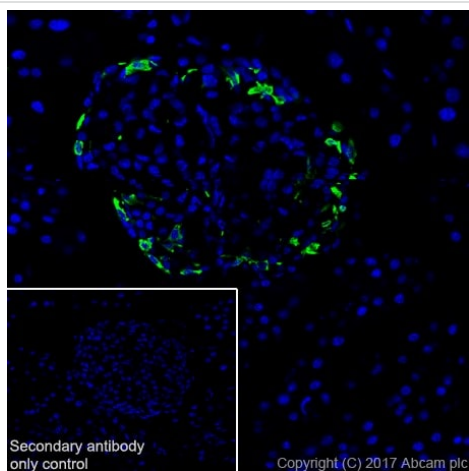
Immunohistochemistry (Frozen sections) - Anti-Somatostatin 28 antibody [EPR3359(2)] (ab111912)

Ab111912 staining Somatostatin-28 in Rat pancreas tissue sections by Immunohistochemistry (IHC-Fr - frozen sections). Tissue was fixed with 4% paraformaldehyde and permeabilized with 0.2% TritonX-100. Heat mediated antigen retrieval was performed using a citrate solution (10mM citrate pH 6.0 + 0.05% Tween-20). Primary antibody was used at a 1:500 dilution. Ab150077 (1:1000) was used as the secondary antibody. Counterstained with DAPI. Cytoplasmic staining on delta cells of rat pancreas islet. [PMID: 25019573], [PMID: 9066918], [BiologiaSerbica 2014, Vol. 36 No. 1-2 24-32].



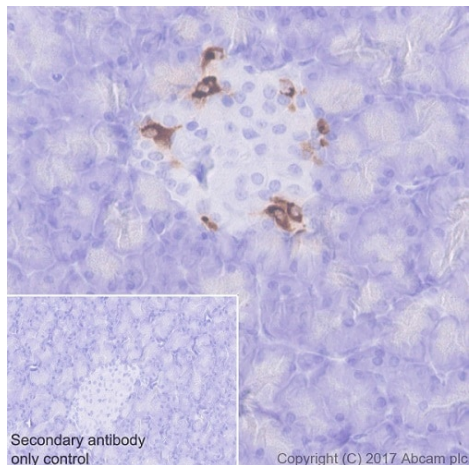
Immunohistochemistry (Frozen sections) - Anti-Somatostatin 28 antibody [EPR3359(2)] (ab111912)

Ab111912 staining Somatostatin-28 in Mouse hippocampus tissue sections by Immunohistochemistry (IHC-Fr - frozen sections). Tissue was fixed with 4% paraformaldehyde and permeabilized with 0.2% TritonX-100. Heat mediated antigen retrieval was performed using a citrate solution (10mM citrate pH 6.0 + 0.05% Tween-20). Primary antibody was used at a 1:500 dilution. Ab150077 (1:1000) was used as the secondary antibody. Counterstained with DAPI. Cytoplasmic staining in the hilus of the dentate gyrus of mouse hippocampus [PMID: 25469233].



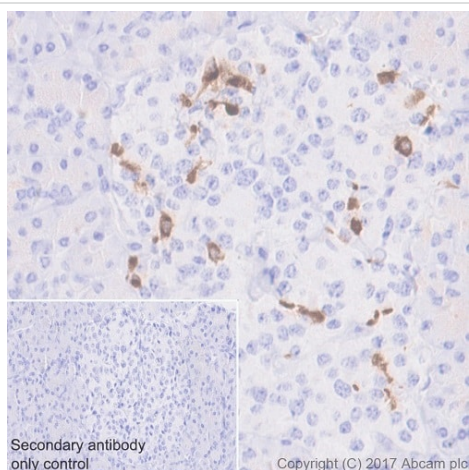
Immunohistochemistry (Frozen sections) - Anti-Somatostatin 28 antibody [EPR3359(2)] (ab111912)

Ab111912 staining Somatostatin-28 in Mouse pancreas tissue sections by Immunohistochemistry (IHC-Fr - frozen sections). Tissue was fixed with 4% paraformaldehyde and permeabilized with 0.2% TritonX-100. Heat mediated antigen retrieval was performed using a citrate solution (10mM citrate pH 6.0 + 0.05% Tween-20). Primary antibody was used at a 1:500 dilution. Ab150077 (1:1000) was used as the secondary antibody. Counterstained with DAPI. Cytoplasmic staining on delta cells of mouse pancreas islet. [PMID: 25019573], [PMID: 9066918], [BiologiaSerbica 2014, Vol. 36 No. 1-2 24-32].



Immunohistochemistry (Formalin/PFA-fixed paraffin-embedded sections) - Anti-Somatostatin 28 antibody [EPR3359(2)] (ab111912)

ab111912 staining Somatostatin 28 in Rat pancreas tissue sections by Immunohistochemistry (IHC-P - paraformaldehyde-fixed, paraffin-embedded sections). Antigen retrieval was by heat mediated in a TRIS/EDTA buffer pH9 ([ab93684](#)). Primary antibody at 1:4000 dilution and Goat Anti- rabbit IgG H&L (HRP) was used as the secondary antibody. Counterstained with Hematoxylin. Cytoplasmic staining on delta cells of rat pancreas islet [PMID: 25019573], [PMID: 9066918], [BiologiaSerbica 2014, Vol. 36 No. 1-2 24-32] .



Immunohistochemistry (Formalin/PFA-fixed paraffin-embedded sections) - Anti-Somatostatin 28 antibody [EPR3359(2)] (ab111912)

ab111912 staining Somatostatin 28 in human pancreas tissue sections by Immunohistochemistry (IHC-P - paraformaldehyde-fixed, paraffin-embedded sections). Heat mediated antigen retrieval in a TRIS/EDTA buffer pH9 ([ab93684](#)). Primary antibody at 1/4000 dilution and a Goat Anti- rabbit IgG H&L (HRP) was used as the secondary antibody. Counterstained with Hematoxylin. Cytoplasmic staining on delta cells of human pancreas islet. [PMID: 25019573], [PMID: 9066918], [BiologiaSerbica 2014, Vol. 36 No. 1-2 24-32] .

Why choose a recombinant antibody?



Research with confidence
Consistent and reproducible results



Long-term and scalable supply
Recombinant technology



Success from the first experiment
Confirmed specificity



Ethical standards compliant
Animal-free production

Anti-Somatostatin 28 antibody [EPR3359(2)]
(ab111912)

Please note: All products are "FOR RESEARCH USE ONLY. NOT FOR USE IN DIAGNOSTIC PROCEDURES"

Our Abpromise to you: Quality guaranteed and expert technical support

- Replacement or refund for products not performing as stated on the datasheet
- Valid for 12 months from date of delivery
- Response to your inquiry within 24 hours
- We provide support in Chinese, English, French, German, Japanese and Spanish
- Extensive multi-media technical resources to help you
- We investigate all quality concerns to ensure our products perform to the highest standards

If the product does not perform as described on this datasheet, we will offer a refund or replacement. For full details of the Abpromise, please visit <https://www.abcam.co.jp/abpromise> or contact our technical team.

Terms and conditions

- Guarantee only valid for products bought direct from Abcam or one of our authorized distributors