

# Anti-SOD2/MnSOD antibody ab13534

★★★★☆ **14 Abreviews** **90 References** **画像数 5**

### 製品の概要

製品名	Anti-SOD2/MnSOD antibody
製品の詳細	Rabbit polyclonal to SOD2/MnSOD
由来種	Rabbit
アプリケーション	<b>適用あり:</b> ICC/IF, IHC-P, IP
種交差性	<b>交差種:</b> Mouse, Rat, Human
免疫原	Recombinant fragment corresponding to Rat SOD2/MnSOD. Database link: <b><u>P07895</u></b>
特記事項	<p>The Life Science industry has been in the grips of a reproducibility crisis for a number of years. Abcam is leading the way in addressing this with our range of recombinant monoclonal antibodies and knockout edited cell lines for gold-standard validation. Please check that this product meets your needs before purchasing.</p> <p>If you have any questions, special requirements or concerns, please send us an inquiry and/or contact our Support team ahead of purchase. Recommended alternatives for this product can be found below, along with publications, customer reviews and Q&amp;As</p>

### 製品の特性

製品の状態	Liquid
保存方法	Shipped at 4°C. Upon delivery aliquot and store at -20°C. Avoid freeze / thaw cycles.
バッファー	Preservative: 0.1% Sodium azide Constituents: PBS, 50% Glycerol
精製度	Immunogen affinity purified
特記事項(精製)	This antibody was immunoaffinity purified.
ポリ/モノ	ポリクローナル
アイソタイプ	IgG

### アプリケーション

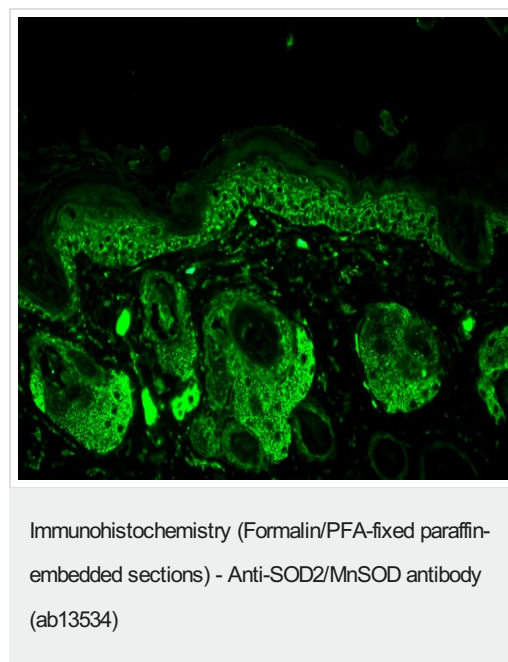
**The Abpromise guarantee**      **Abpromise保証は、次のテスト済みアプリケーションにおけるab13534の使用に適用されます**  
 アプリケーションノートには、推奨の開始希釈率がありますが、適切な希釈率につきましてはご検討ください。

アプリケーション	Abreviews	特記事項
ICC/IF	★★★★★ (1)	Use at an assay dependent concentration.
IHC-P	★★★★★ (2)	1/100.
IP		Use a concentration of 10 µg/ml.

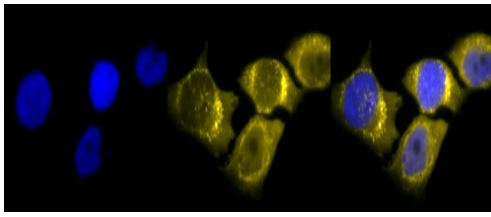
## ターゲット情報

機能	Destroys superoxide anion radicals which are normally produced within the cells and which are toxic to biological systems.
関連疾患	Genetic variation in SOD2 is associated with susceptibility to microvascular complications of diabetes type 6 (MVCD6) [MIM:612634]. These are pathological conditions that develop in numerous tissues and organs as a consequence of diabetes mellitus. They include diabetic retinopathy, diabetic nephropathy leading to end-stage renal disease, and diabetic neuropathy. Diabetic retinopathy remains the major cause of new-onset blindness among diabetic adults. It is characterized by vascular permeability and increased tissue ischemia and angiogenesis.
配列類似性	Belongs to the iron/manganese superoxide dismutase family.
翻訳後修飾	Nitrated under oxidative stress. Nitration coupled with oxidation inhibits the catalytic activity.
細胞内局在	Mitochondrion matrix.

## 画像



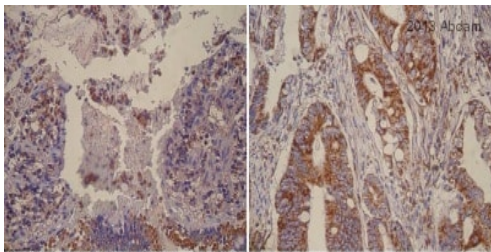
ab13534 at 1/100 dilution staining Superoxide Dismutase 2 in mouse back skin tissue section by Immunohistochemistry (Bouin's fixative fixed paraffin-embedded tissue section). Antigen retrieval was done by microwave in citrate buffer. A Fluorophore-conjugated goat anti-rabbit secondary was used at 1/50 dilution.



Immunocytochemistry/ Immunofluorescence - Anti-SOD2/MnSOD antibody (ab13534)

Immunocytochemistry/Immunofluorescence analysis of HeLa cells labelling SOD2/MnSOD with ab13534. Cells were fixed with 2% formaldehyde for 20 minutes at room temperature and incubated with the primary antibody at a dilution of 1/120 for 12 hours at 4°C. Followed by incubation with a R-PE-conjugated goat anti-rabbit IgG at a dilution of 1/200 for 2 hours at room temperature. Counterstained with DAPI (blue) at 1/40000 for 2 hours at room temperature. Magnification: 100x.

Left: DAPI (blue) nuclear stain. Middle: SOD2/MnSOD. Right: Merge.



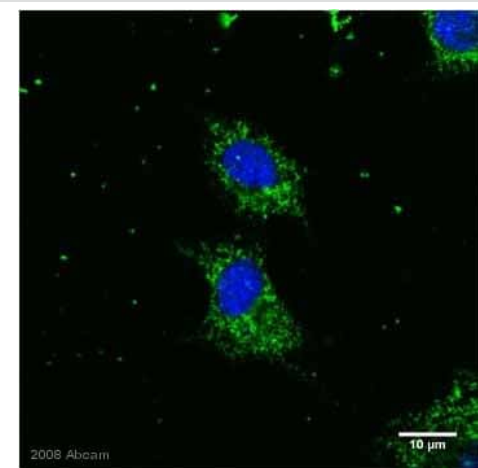
Ileo (Horse)

Colon (human)

Immunohistochemistry (Formalin/PFA-fixed paraffin-embedded sections) - Anti-SOD2/MnSOD antibody (ab13534)

This image is courtesy of an anonymous Abreview

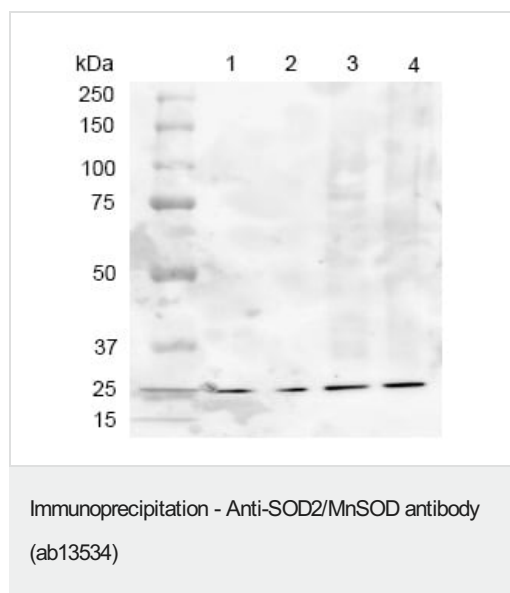
ab13534 staining SOD2 in Human colon and Horse ileo tissue sections by Immunohistochemistry (IHC-P - paraformaldehyde-fixed, paraffin-embedded sections). Tissue was fixed with formaldehyde and antigen retrieval was by heat mediation. Samples were incubated with primary antibody (1/2000) for 18 hours.



Immunocytochemistry/ Immunofluorescence - Anti-SOD2/MnSOD antibody (ab13534)

This image is courtesy of an Abreview submitted by Dr Anne Chiamello

ab13534 staining differentiating (rat) PC12 cells by ICC/IF. Cells were PFA fixed and permeabilized in 0.2% Triton X100 prior to blocking in 10% serum at RT for 1 hour. The primary antibody was incubated with the sample for 1 hour at 2 µg/ml. An Alexa Fluor® 488 conjugated goat anti-rabbit antibody diluted 1/1000 was used as the secondary. Cells were counterstained with the nuclear TOPRO-3 stain.



**Lane 1:** ab13534 + Mouse brain lysate (250µg)

**Lane 2:** ab13534 + Mouse brain lysate (250µg, ½ dilution)

**Lane 3:** Mouse brain lysate (15µg)

**Lane 4:** Rat brain lysate (15µg)

Ab13534 at 1:1000 immunoprecipitating SOD2 in mouse brain and rat brain lysate. For western blotting, donkey anti- rabbit IgG (HRP) was used as the secondary antibody.

**Please note:** All products are "FOR RESEARCH USE ONLY. NOT FOR USE IN DIAGNOSTIC PROCEDURES"

### Our Abpromise to you: Quality guaranteed and expert technical support

- Replacement or refund for products not performing as stated on the datasheet
- Valid for 12 months from date of delivery
- Response to your inquiry within 24 hours
- We provide support in Chinese, English, French, German, Japanese and Spanish
- Extensive multi-media technical resources to help you
- We investigate all quality concerns to ensure our products perform to the highest standards

If the product does not perform as described on this datasheet, we will offer a refund or replacement. For full details of the Abpromise, please visit <https://www.abcam.co.jp/abpromise> or contact our technical team.

### Terms and conditions

- Guarantee only valid for products bought direct from Abcam or one of our authorized distributors