


Anti-SNRPB2 antibody - N-terminal ab229560

画像数 2

製品の概要

製品名	Anti-SNRPB2 antibody - N-terminal
製品の詳細	Rabbit polyclonal to SNRPB2 - N-terminal
由来種	Rabbit
アプリケーション	適用あり: WB
種交差性	交差種: Human 交差が予測される動物種: Mouse, Rat, Cow, Dog, Rhesus monkey 
免疫原	Synthetic peptide within Human SNRPB2 (N terminal). The exact sequence is proprietary. Database link: P08579
ポジティブ・コントロール	WB: U-87 MG and HepG2 nuclear and whole cell extracts.
特記事項	<p>The Life Science industry has been in the grips of a reproducibility crisis for a number of years. Abcam is leading the way in addressing this with our range of recombinant monoclonal antibodies and knockout edited cell lines for gold-standard validation. Please check that this product meets your needs before purchasing.</p> <p>If you have any questions, special requirements or concerns, please send us an inquiry and/or contact our Support team ahead of purchase. Recommended alternatives for this product can be found below, along with publications, customer reviews and Q&As</p>

製品の特性

製品の状態	Liquid
保存方法	Shipped at 4°C. Store at +4°C short term (1-2 weeks). Upon delivery aliquot. Store at -20°C long term. Avoid freeze / thaw cycle.
バッファー	pH: 7.00 Preservative: 0.025% Proclin 300 Constituents: 79% PBS, 20% Glycerol (glycerin, glycerine)
精製度	Immunogen affinity purified
ポリ/モノ	ポリクローナル
アイソタイプ	IgG

アプリケーション

The Abpromise guarantee

Abpromise保証は、次のテスト済みアプリケーションにおけるab229560の使用に適用されます

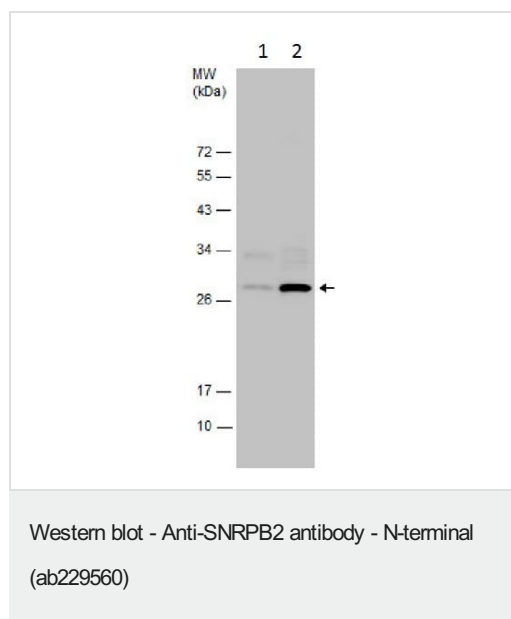
アプリケーションノートには、推奨の開始希釈率がありますが、適切な希釈率につきましてはご検討ください。

アプリケーション	Abreviews	特記事項
WB		1/500 - 1/3000. Predicted molecular weight: 25 kDa.

ターゲット情報

機能	Involved in pre-mRNA splicing. This protein is associated with snRNP U2. It binds stem loop IV of U2 snRNA only in presence of the U2A' protein.
配列類似性	Belongs to the RRM U1 A/B" family. Contains 2 RRM (RNA recognition motif) domains.
細胞内局在	Nucleus.

画像



All lanes : Anti-SNRPB2 antibody - N-terminal (ab229560) at 1/3000 dilution

Lane 1 : U-87 MG (Human glioblastoma-astrocytoma epithelial cell line) whole cell extracts

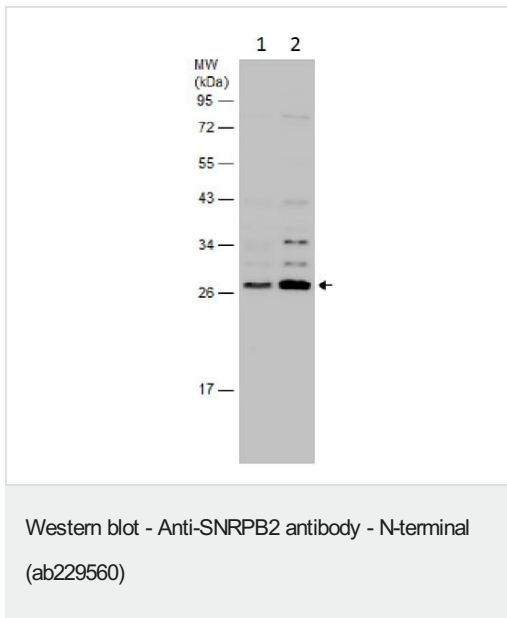
Lane 2 : U-87 MG (Human glioblastoma-astrocytoma epithelial cell line) nuclear extracts

Lysates/proteins at 30 µg per lane.

Developed using the ECL technique.

Predicted band size: 25 kDa

12% SDS-PAGE



All lanes : Anti-SNRPB2 antibody - N-terminal (ab229560) at 1/3000 dilution

Lane 1 : HepG2 (Human liver hepatocellular carcinoma cell line) whole cell extracts

Lane 2 : HepG2 (Human liver hepatocellular carcinoma cell line) nuclear extracts

Lysates/proteins at 30 µg per lane.

Developed using the ECL technique.

Predicted band size: 25 kDa

12% SDS-PAGE

Please note: All products are "FOR RESEARCH USE ONLY. NOT FOR USE IN DIAGNOSTIC PROCEDURES"

Our Abpromise to you: Quality guaranteed and expert technical support

- Replacement or refund for products not performing as stated on the datasheet
- Valid for 12 months from date of delivery
- Response to your inquiry within 24 hours
- We provide support in Chinese, English, French, German, Japanese and Spanish
- Extensive multi-media technical resources to help you
- We investigate all quality concerns to ensure our products perform to the highest standards

If the product does not perform as described on this datasheet, we will offer a refund or replacement. For full details of the Abpromise, please visit <https://www.abcam.co.jp/abpromise> or contact our technical team.

Terms and conditions

- Guarantee only valid for products bought direct from Abcam or one of our authorized distributors