


### Anti-SNAP25 antibody ab5666

★★★★★ [4 Abreviews](#) [51 References](#) [画像数 4](#)

#### 製品の概要

<b>製品名</b>	Anti-SNAP25 antibody
<b>製品の詳細</b>	Rabbit polyclonal to SNAP25
<b>由来種</b>	Rabbit
<b>アプリケーション</b>	<b>適用あり:</b> ICC, WB, Flow Cyt
<b>種交差性</b>	<b>交差種:</b> Mouse, Rat <b>交差が予測される動物種:</b> Human, Chimpanzee, Rhesus monkey, Goldfish 
<b>免疫原</b>	Synthetic peptide corresponding to Mouse SNAP25 aa 195-206. Sequence: ANQRATKMLGSG  (Peptide available as <a href="#">ab5843</a> )

 [Run BLAST with](#)

 [Run BLAST with](#)

#### 特記事項

The Life Science industry has been in the grips of a reproducibility crisis for a number of years. Abcam is leading the way in addressing this with our range of recombinant monoclonal antibodies and knockout edited cell lines for gold-standard validation. Please check that this product meets your needs before purchasing.

If you have any questions, special requirements or concerns, please send us an inquiry and/or contact our Support team ahead of purchase. Recommended alternatives for this product can be found below, along with publications, customer reviews and Q&As

#### 製品の特性

<b>製品の状態</b>	Liquid
<b>保存方法</b>	Shipped at 4°C. Store at +4°C short term (1-2 weeks). Upon delivery aliquot. Store at -20°C or -80°C. Avoid freeze / thaw cycle.
<b>バッファー</b>	Preservative: 0.05% Sodium azide Constituents: 99% PBS, 0.1% BSA
<b>精製度</b>	Immunogen affinity purified
<b>ポリ/モノ</b>	ポリクローナル
<b>アイソタイプ</b>	IgG

## アプリケーション

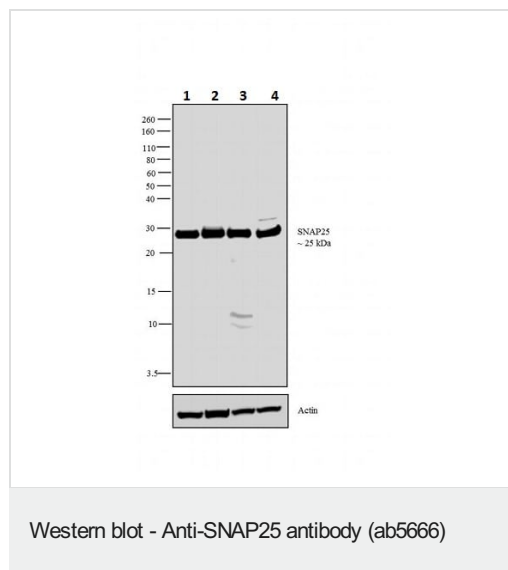
**The Abpromise guarantee**      **Abpromise保証は、次のテスト済みアプリケーションにおけるab5666の使用に適用されます**  
アプリケーションノートには、推奨の開始希釈率がありますが、適切な希釈率につきましてはご検討ください。

アプリケーション	Abreviews	特記事項
ICC		1/100.
WB	★★★★★ (4)	Use a concentration of 0.5 - 2 µg/ml. Detects a band of approximately 25 kDa.
Flow Cyt		Use 3-5µg for 10 <sup>6</sup> cells.

## ターゲット情報

<b>機能</b>	t-SNARE involved in the molecular regulation of neurotransmitter release. May play an important role in the synaptic function of specific neuronal systems. Associates with proteins involved in vesicle docking and membrane fusion. Regulates plasma membrane recycling through its interaction with CENPF.
<b>組織特異性</b>	Neurons of the neocortex, hippocampus, piriform cortex, anterior thalamic nuclei, pontine nuclei, and granule cells of the cerebellum.
<b>配列類似性</b>	Belongs to the SNAP-25 family. Contains 2 t-SNARE coiled-coil homology domains.
<b>翻訳後修飾</b>	Palmitoylated. Cys-85 appears to be the main site, and palmitoylation is required for membrane association.
<b>細胞内局在</b>	Cytoplasm > perinuclear region. Cell membrane. Cell junction > synapse > synaptosome. Membrane association requires palmitoylation. Expressed throughout cytoplasm, concentrating at the perinuclear region.

## 画像



**All lanes** : Anti-SNAP25 antibody (ab5666)

**Lane 1** : Mouse cerebellum

**Lane 2** : Mouse brain

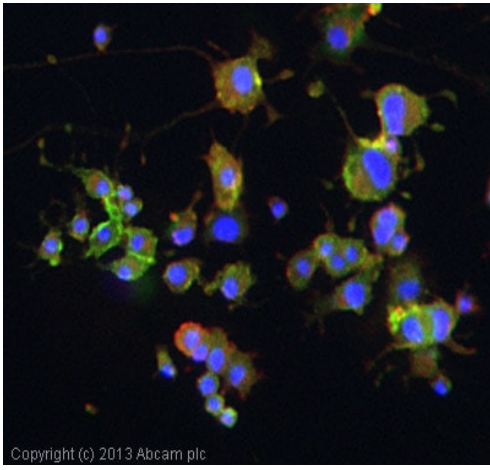
**Lane 3** : Rat brain

**Lane 4** : Membrane enriched extract

Lysates/proteins at 30 µg per lane.

### Secondary

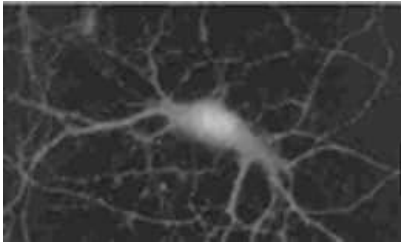
**All lanes** : Goat anti-Rabbit IgG (H+L) Secondary Antibody, HRP conjugate



Copyright (c) 2013 Abcam plc

Immunocytochemistry - Anti-SNAP25 antibody (ab5666)

ICC/IF image of ab5666 stained PC12 cells. The cells were 4% paraformaldehyde fixed (10 min) and then incubated in 1%BSA / 10% normal goat serum / 0.3M glycine in 0.1% PBS-Tween for 1h to permeabilise the cells and block non-specific protein-protein interactions. The cells were then incubated with the antibody (ab5666, 5µg/ml) overnight at +4°C. The secondary antibody (green) was **ab96899**, DyLight® 488 goat anti-rabbit IgG (H+L) used at a 1/250 dilution for 1h. Alexa Fluor® 594 WGA was used to label plasma membranes (red) at a 1/200 dilution for 1h. DAPI was used to stain the cell nuclei (blue) at a concentration of 1.43µM.



Immunocytochemistry - Anti-SNAP25 antibody (ab5666)

Immunolocalization of SNAP-25 in cultured rat hippocampal cells using ab5666.



Western blot - Anti-SNAP25 antibody (ab5666)  
This image is courtesy of an anonymous Abreview

Anti-SNAP25 antibody (ab5666) at 1/10000 dilution + Whole tissue lysate prepared from mouse hippocampus.

### Secondary

HRP conjugated goat anti-rabbit Ig. at 1/10000 dilution

Developed using the ECL technique.

Performed under reducing conditions.

**Observed band size:** 25 kDa

**Exposure time:** 20 seconds

**Please note:** All products are "FOR RESEARCH USE ONLY. NOT FOR USE IN DIAGNOSTIC PROCEDURES"

**Our Abpromise to you: Quality guaranteed and expert technical support**

- Replacement or refund for products not performing as stated on the datasheet
- Valid for 12 months from date of delivery
- Response to your inquiry within 24 hours
  
- We provide support in Chinese, English, French, German, Japanese and Spanish
- Extensive multi-media technical resources to help you
- We investigate all quality concerns to ensure our products perform to the highest standards

If the product does not perform as described on this datasheet, we will offer a refund or replacement. For full details of the Abpromise, please visit <https://www.abcam.co.jp/abpromise> or contact our technical team.

### **Terms and conditions**

---

- Guarantee only valid for products bought direct from Abcam or one of our authorized distributors