

Anti-SMC1L2 antibody ab96206

1 References [画像数 2](#)

医薬用外劇物

製品の概要

製品名	Anti-SMC1L2 antibody
製品の詳細	Rabbit polyclonal to SMC1L2
由来種	Rabbit
アプリケーション	<b>適用あり:</b> WB, IHC-P
種交差性	<b>交差種:</b> Human
免疫原	Recombinant fragment, corresponding to a region within amino acids 154-403 of Human SMC1L2.
ポジティブ・コントロール	HeLa cells lysate, SAS xenograft
特記事項	<p>The Life Science industry has been in the grips of a reproducibility crisis for a number of years. Abcam is leading the way in addressing this with our range of recombinant monoclonal antibodies and knockout edited cell lines for gold-standard validation. Please check that this product meets your needs before purchasing.</p> <p>If you have any questions, special requirements or concerns, please send us an inquiry and/or contact our Support team ahead of purchase. Recommended alternatives for this product can be found below, along with publications, customer reviews and Q&amp;As</p>

製品の特性

製品の状態	Liquid
保存方法	Shipped at 4°C. Upon delivery aliquot and store at -20°C. Avoid repeated freeze / thaw cycles.
バッファー	pH: 7.00 Preservative: 0.01% Thimerosal (merthiolate) Constituents: 1.21% Tris, 0.75% Glycine, 10% Glycerol (glycerin, glycerine)
精製度	Immunogen affinity purified
ポリ/モノ	ポリクローナル
アイソタイプ	IgG

アプリケーション

The Abpromise guarantee Abpromise保証は、次のテスト済みアプリケーションにおけるab96206の使用に適用されます

アプリケーションノートには、推奨の開始希釈率がありますが、適切な希釈率につきましてはご確認ください。

アプリケーション	Abreviews	特記事項
WB		1/500 - 1/3000. Predicted molecular weight: 144 kDa.
IHC-P		1/100 - 1/500.

## ターゲット情報

### 機能

Meiosis-specific component of cohesin complex. Required for the maintenance of meiotic cohesion, but not, or only to a minor extent, for its establishment. Contributes to axial element (AE) formation and the organization of chromatin loops along the AE. Plays a key role in synapsis, recombination and chromosome movements. The cohesin complex is required for the cohesion of sister chromatids after DNA replication. The cohesin complex apparently forms a large proteinaceous ring within which sister chromatids can be trapped. At anaphase, the complex is cleaved and dissociates from chromatin, allowing sister chromatids to segregate. The meiosis-specific cohesin complex probably replaces mitosis specific cohesin complex when it dissociates from chromatin during prophase I.

### 配列類似性

Belongs to the SMC family. SMC1 subfamily.

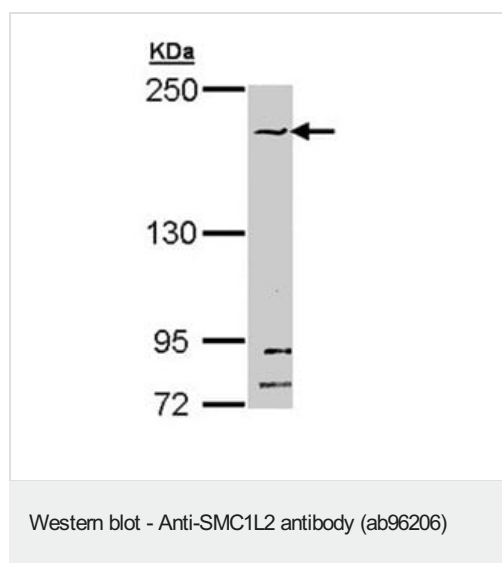
### ドメイン

The flexible hinge domain, which separates the large intramolecular coiled coil regions, allows the heterotypic interaction with the corresponding domain of SMC3, forming a V-shaped heterodimer. The two heads of the heterodimer are then connected by different ends of the cleavable RAD21 or REC8 protein, forming a ring structure.

### 細胞内局在

Nucleus. Chromosome. Chromosome > centromere. Associates with chromatin. In prophase I stage of meiosis, localizes along the AE of synaptonemal complexes. In late-pachytene-diplotene, the bulk of protein dissociates from the chromosome arms probably because of phosphorylation by PLK, except at centromeres, where cohesin complexes remain. Remains chromatin associated at the centromeres up to metaphase II. At anaphase II, dissociates from centromeres, allowing chromosomes segregation.

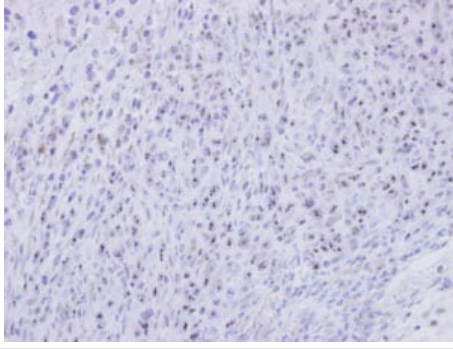
## 画像



Anti-SMC1L2 antibody (ab96206) at 1/1000 dilution + HeLa whole cell lysate at 30 µg

**Predicted band size:** 144 kDa

5% SDS PAGE



Immunohistochemical analysis of paraffin-embedded SAS xenograft, using ab96206 at 1:500 dilution.

Immunohistochemistry (Formalin/PFA-fixed paraffin-embedded sections) - Anti-SMC1L2 antibody (ab96206)

**Please note:** All products are "FOR RESEARCH USE ONLY. NOT FOR USE IN DIAGNOSTIC PROCEDURES"

### Our Abpromise to you: Quality guaranteed and expert technical support

---

- Replacement or refund for products not performing as stated on the datasheet
- Valid for 12 months from date of delivery
- Response to your inquiry within 24 hours
- We provide support in Chinese, English, French, German, Japanese and Spanish
- Extensive multi-media technical resources to help you
- We investigate all quality concerns to ensure our products perform to the highest standards

If the product does not perform as described on this datasheet, we will offer a refund or replacement. For full details of the Abpromise, please visit <https://www.abcam.co.jp/abpromise> or contact our technical team.

### Terms and conditions

---

- Guarantee only valid for products bought direct from Abcam or one of our authorized distributors