

Anti-Smad2 (phospho S255) antibody [EPR2856(N)] ab188334

リコンビナント **RabMAb**

★★★★★ **2 Abreviews** **53 References** 画像数 9

製品の概要

製品名	Anti-Smad2 (phospho S255) antibody [EPR2856(N)]
製品の詳細	Rabbit monoclonal [EPR2856(N)] to Smad2 (phospho S255)
由来種	Rabbit
アプリケーション	適用あり: Dot blot, IHC-P, IP, WB, ChIC/CUT&RUN-seq
種交差性	交差種: Mouse, Rat, Human
免疫原	Synthetic peptide. This information is proprietary to Abcam and/or its suppliers.
ポジティブ・コントロール	Hela treated with Okadaic acid and Calyculin A, Hela treated with Okadaic acid and Calyculin A, Human endometrium, Human transitional cell carcinoma of bladder. RAW 264.7 (Mouse Abelson murine leukemia virus-induced tumor macrophage) and PC-12 (Rat adrenal gland pheochromocytoma) whole cell lysates. ChIC/CUT&RUN-Seq: HaCaT cells.
特記事項	<p>This product is a recombinant monoclonal antibody, which offers several advantages including:</p> <ul style="list-style-type: none"> - High batch-to-batch consistency and reproducibility - Improved sensitivity and specificity - Long-term security of supply - Animal-free production <p>For more information see here.</p> <p>Our RabMAb[®] technology is a patented hybridoma-based technology for making rabbit monoclonal antibodies. For details on our patents, please refer to RabMAb[®] patents.</p>

製品の特性

製品の状態	Liquid
保存方法	Shipped at 4°C. Store at +4°C short term (1-2 weeks). Upon delivery aliquot. Store at -20°C long term. Avoid freeze / thaw cycle.
バッファー	<p>pH: 7.2</p> <p>Preservative: 0.01% Sodium azide</p> <p>Constituents: 59% PBS, 40% Glycerol, 0.05% BSA</p>
精製度	Protein A purified
ポリ/モノ	モノクローナル
クローン名	EPR2856(N)

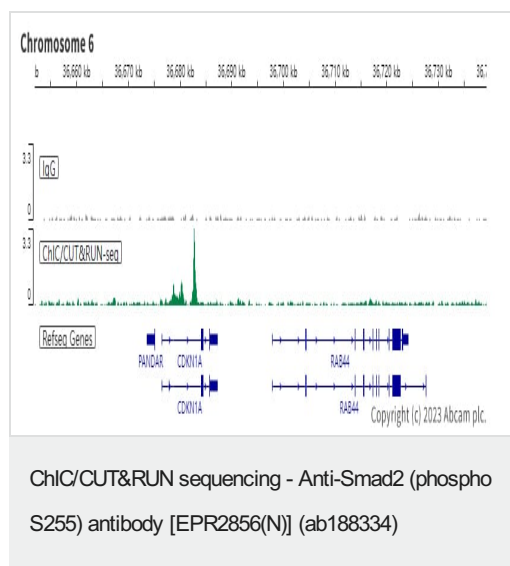
アプリケーション

The Abpromise guarantee Abpromise保証は、次のテスト済みアプリケーションにおけるab188334の使用に適用されます
アプリケーションノートには、推奨の開始希釈率がありますが、適切な希釈率につきましてはご検討ください。

アプリケーション	Abreviews	特記事項
Dot blot		Use at an assay dependent concentration.
IHC-P	★★★★★ (1)	1/50 - 1/100. Perform heat mediated antigen retrieval with Tris/EDTA buffer pH 9.0 before commencing with IHC staining protocol.
IP		1/50 - 1/70.
WB		1/1000 - 1/10000. Detects a band of approximately 58 kDa (predicted molecular weight: 52 kDa).
ChIC/CUT&RUN-seq		Use at an assay dependent concentration. 5µg

ターゲット情報

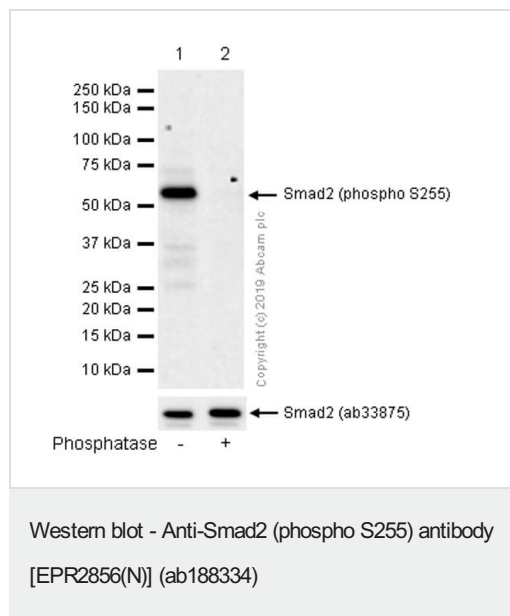
機能	Receptor-regulated SMAD (R-SMAD) that is an intracellular signal transducer and transcriptional modulator activated by TGF-beta (transforming growth factor) and activin type 1 receptor kinases. Binds the TRE element in the promoter region of many genes that are regulated by TGF-beta and, on formation of the SMAD2/SMAD4 complex, activates transcription. May act as a tumor suppressor in colorectal carcinoma.
組織特異性	Expressed at high levels in skeletal muscle, heart and placenta.
配列類似性	Belongs to the dwarfin/SMAD family. Contains 1 MH1 (MAD homology 1) domain. Contains 1 MH2 (MAD homology 2) domain.
翻訳後修飾	Phosphorylated on one or several of Thr-220, Ser-245, Ser-250, and Ser-255. In response to TGF-beta, phosphorylated on Ser-465/467 by TGF-beta and activin type 1 receptor kinases. Able to interact with SMURF2 when phosphorylated on Ser-465/467, recruiting other proteins, such as SNON, for degradation. In response to decorin, the naturally occurring inhibitor of TGF-beta signaling, phosphorylated on Ser-240 by CaMK2. Phosphorylated by MAPK3 upon EGF stimulation; which increases transcriptional activity and stability, and is blocked by calmodulin. In response to TGF-beta, ubiquitinated by NEDD4L; which promotes its degradation. Acetylated on Lys-19 by coactivators in response to TGF-beta signaling, which increases transcriptional activity. Isoform short: Acetylation increases DNA binding activity in vitro and enhances its association with target promoters in vivo. Acetylation in the nucleus by EP300 is enhanced by TGF-beta.
細胞内局在	Cytoplasm. Nucleus. Cytoplasmic and nuclear in the absence of TGF-beta. On TGF-beta stimulation, migrates to the nucleus when complexed with SMAD4. On dephosphorylation by phosphatase PPM1A, released from the SMAD2/SMAD4 complex, and exported out of the nucleus by interaction with RANBP1.



ChIC/CUT&RUN was performed using a pAG-MNase at a final concentration of 700 ng/mL, 2×10^5 HaCaT (human skin keratinocyte) cells and 5µg of ab188334 [EPR2856(N)]. The resulting DNA was sequenced on the Illumina NovaSeq 6000 to a depth of 10 million reads. The negative IgG control [ab172730](#) is also shown.

Additional screenshots of mapped reads can be downloaded [here](#).

The University of Geneva owns patents relevant to ChIC (Chromatin Immuno-Cleavage) methods.



All lanes : Anti-Smad2 (phospho S255) antibody [EPR2856(N)] (ab188334) at 1/10000 dilution

Lane 1 : PC-12 (Rat adrenal gland pheochromocytoma) whole cell lysate

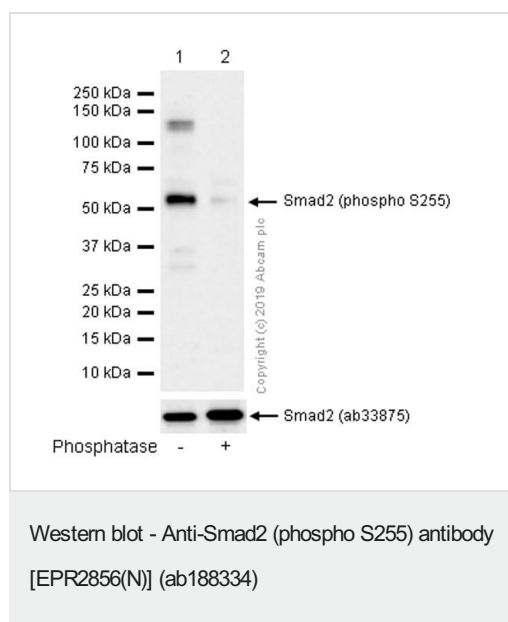
Lane 2 : PC-12 (Rat adrenal gland pheochromocytoma) whole cell lysate, Then the membrane was incubated with phosphatase

Lysates/proteins at 15 µg per lane.

Secondary

All lanes : Goat Anti-Rabbit IgG H&L (HRP) ([ab97051](#)) at 1/20000 dilution (Goat Anti-Rabbit IgG, (H+L), Peroxidase conjugated)

Predicted band size: 52 kDa



All lanes : Anti-Smad2 (phospho S255) antibody [EPR2856(N)] (ab188334) at 1/10000 dilution

Lane 1 : RAW 264.7 (Mouse Abelson murine leukemia virus-induced tumor macrophage) whole cell lysate

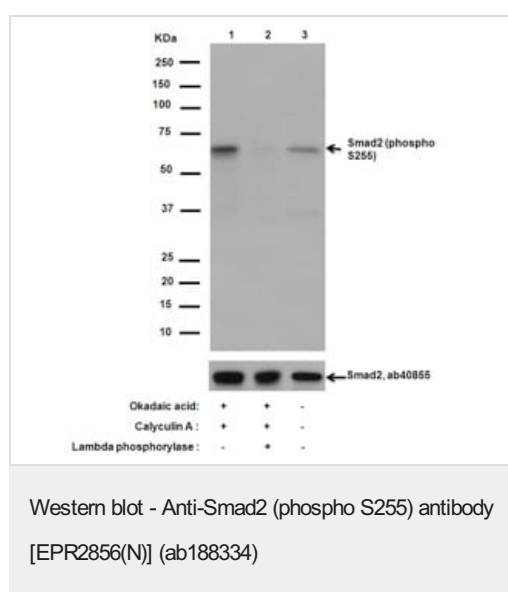
Lane 2 : RAW 264.7 (Mouse Abelson murine leukemia virus-induced tumor macrophage) whole cell lysate. Then the membrane was incubated with phosphatase.

Lysates/proteins at 15 µg per lane.

Secondary

All lanes : Goat Anti-Rabbit IgG H&L (HRP) (**ab97051**) at 1/20000 dilution (Goat Anti-Rabbit IgG, (H+L), Peroxidase conjugated)

Predicted band size: 52 kDa



All lanes : Anti-Smad2 (phospho S255) antibody [EPR2856(N)] (ab188334) at 1/10000 dilution

Lane 1 : HeLa treated with Okadaic acid and Calyculin A

Lane 2 : HeLa treated with Okadaic acid and Calyculin A , then treated with Lambda phosphatase

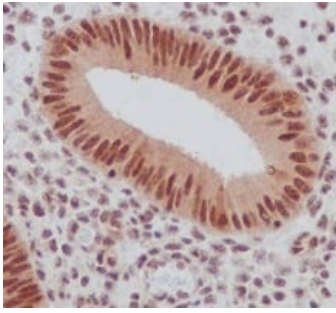
Lane 3 : Untreated HeLa

Lysates/proteins at 10 µg per lane.

Secondary

All lanes : Goat Anti-Rabbit IgG, (H+L), Peroxidase conjugated at 1/1000 dilution

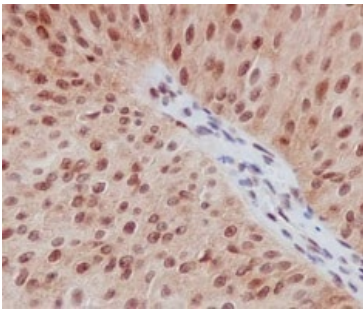
Predicted band size: 52 kDa



Immunohistochemistry (Formalin/PFA-fixed paraffin-embedded sections) - Anti-Smad2 (phospho S255) antibody [EPR2856(N)] (ab188334)

Immunohistochemical analysis of formalin fixed paraffin embedded Human endometrium labeling Smad2 (phospho S255) with ab188334 at 1/100 dilution and HRP Polymer for Rabbit IgG. Counterstained with Hematoxylin.

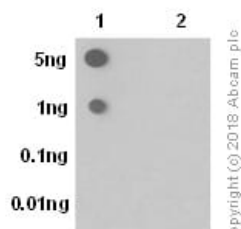
Perform heat mediated antigen retrieval with Tris/EDTA buffer pH 9.0 before commencing with IHC staining protocol.



Immunohistochemistry (Formalin/PFA-fixed paraffin-embedded sections) - Anti-Smad2 (phospho S255) antibody [EPR2856(N)] (ab188334)

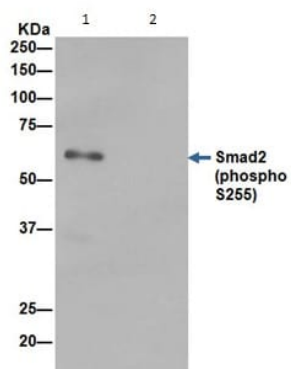
Immunohistochemical analysis of formalin fixed paraffin embedded Human transitional cell carcinoma of bladder labeling Smad2 (phospho S255) with ab188334 at 1/100 dilution and HRP Polymer for Rabbit IgG. Counterstained with Hematoxylin.

Perform heat mediated antigen retrieval with Tris/EDTA buffer pH 9.0 before commencing with IHC staining protocol.



Dot Blot - Anti-Smad2 (phospho S255) antibody [EPR2856(N)] (ab188334)

Dot blot analysis of Smad2 (S255) phospho peptide (Lane 1), Smad2 non-phospho peptide (Lane 2), labelling Smad2 (S255) phospho peptide with ab188334 at a dilution of 1:1000 dilution (1.365ug/ml). A Goat Anti-Rabbit IgG, (H+L), Peroxidase conjugated (**ab97051**) was used as the secondary antibody at a dilution of 1:20,000 dilution. Blocking buffer: 5% NFDM/TBST. Dilution buffer: 5% NFDM /TBST .



Immunoprecipitation of Hela cells treated with Okadaic acid and Calyculin A (Lane 1) or PBS (Lane 2) labeling Smad2 (phospho S255) with ab188334 at 1/50 dilution and Anti-Rabbit IgG (HRP), specific to the non-reduced form of IgG at 1/1500 dilution

Immunoprecipitation - Anti-Smad2 (phospho S255) antibody [EPR2856(N)] (ab188334)

Why choose a recombinant antibody?



Research with confidence
Consistent and reproducible results



Long-term and scalable supply
Recombinant technology



Success from the first experiment
Confirmed specificity



Ethical standards compliant
Animal-free production

Anti-Smad2 (phospho S255) antibody [EPR2856(N)] (ab188334)

Please note: All products are "FOR RESEARCH USE ONLY. NOT FOR USE IN DIAGNOSTIC PROCEDURES"

Our Abpromise to you: Quality guaranteed and expert technical support

- Replacement or refund for products not performing as stated on the datasheet

- Valid for 12 months from date of delivery
- Response to your inquiry within 24 hours
- We provide support in Chinese, English, French, German, Japanese and Spanish
- Extensive multi-media technical resources to help you
- We investigate all quality concerns to ensure our products perform to the highest standards

If the product does not perform as described on this datasheet, we will offer a refund or replacement. For full details of the Abpromise, please visit <https://www.abcam.co.jp/abpromise> or contact our technical team.

Terms and conditions

- Guarantee only valid for products bought direct from Abcam or one of our authorized distributors