

# Anti-Smad1 (phospho S463 + S465) antibody [EPR20662-29] ab214423

リコンビナント RabMAb

## 3 References [画像数 4](#)

### 製品の概要

製品名	Anti-Smad1 (phospho S463 + S465) antibody [EPR20662-29]
製品の詳細	Rabbit monoclonal [EPR20662-29] to Smad1 (phospho S463 + S465)
由来種	Rabbit
特異性	Based on sequence homology this antibody also reacts with Smad5 (phospho S463/S465) and Smad9 (phospho S465/S467).
アプリケーション	<b>適用あり:</b> WB, Dot blot, IP
種交差性	<b>交差種:</b> Mouse, Human
免疫原	Recombinant fragment. This information is proprietary to Abcam and/or its suppliers.
ポジティブ・コントロール	Dot Blot: Smad1 (phospho S463/S465) peptide, Smad1 (phospho S465) peptide, Smad5 (phospho S463/S465) peptide, Smad5 (phospho S465) peptide. WB: Calyculin ( <a href="#">ab141784</a> ) treated HeLa cell lysate; BMP2 treated NIH/3T3 cell lysate. IP: BMP2 treated NIH/3T3 cell lysate.
特記事項	Our RabMAb <sup>®</sup> technology is a patented hybridoma-based technology for making rabbit monoclonal antibodies. For details on our patents, please refer to <a href="#">RabMAb<sup>®</sup> patents</a> .

### 製品の特性

製品の状態	Liquid
保存方法	Shipped at 4°C. Store at +4°C short term (1-2 weeks). Upon delivery aliquot. Store at -20°C long term. Avoid freeze / thaw cycle.
バッファー	pH: 7.2 Preservative: 0.01% Sodium azide Constituents: PBS, 40% Glycerol (glycerin, glycerine), 0.05% BSA
精製度	Protein A purified
ポリクローナル	モノクローナル
クローン名	EPR20662-29
アイソタイプ	IgG

## アプリケーション

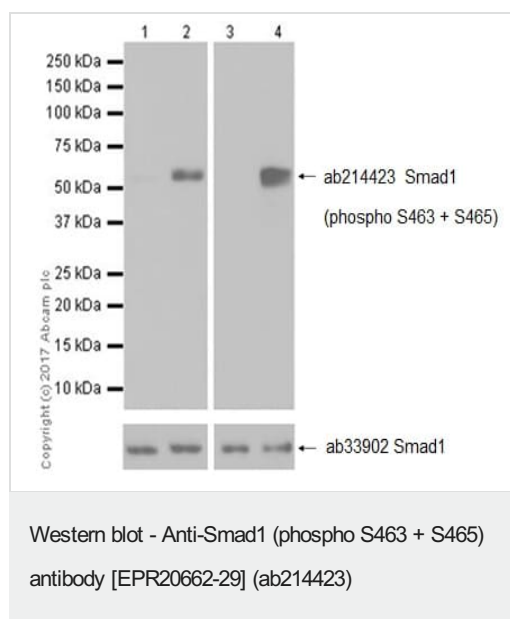
**The Abpromise guarantee** **Abpromise保証は、次のテスト済みアプリケーションにおけるab214423の使用に適用されます**  
アプリケーションノートには、推奨の開始希釈率がありますが、適切な希釈率につきましてはご検討ください。

アプリケーション	Abreviews	特記事項
WB		1/1000. Detects a band of approximately 60 kDa (predicted molecular weight: 52 kDa).
Dot blot		1/1000.
IP		1/30.

## ターゲット情報

機能	Transcriptional modulator activated by BMP (bone morphogenetic proteins) type 1 receptor kinase. SMAD1 is a receptor-regulated SMAD (R-SMAD). SMAD1/OAZ1/PSMB4 complex mediates the degradation of the CREBBP/EP300 repressor SNIP1.
組織特異性	Ubiquitous. Highest expression seen in the heart and skeletal muscle.
配列類似性	Belongs to the dwarfin/SMAD family. Contains 1 MH1 (MAD homology 1) domain. Contains 1 MH2 (MAD homology 2) domain.
翻訳後修飾	Phosphorylated on serine by BMP type 1 receptor kinase. Ubiquitin-mediated proteolysis by SMAD-specific E3 ubiquitin ligase SMURF1.
細胞内局在	Cytoplasm. Nucleus. Cytoplasmic in the absence of ligand. Migrates to the nucleus when complexed with SMAD4. Co-localizes with LEMD3 at the nucleus inner membrane.

## 画像



**All lanes** : Anti-Smad1 (phospho S463 + S465) antibody [EPR20662-29] (ab214423) at 1/1000 dilution

**Lane 1** : HeLa (human cervix adenocarcinoma epithelial cell) grown in serum-free media overnight, whole cell lysate

**Lane 2** : HeLa grown in serum-free media overnight, then treated with 100ng/ml Calyculin A (**ab141784**) for 15 minutes, Calyculin A was removed, followed by treatment with 100ng/ml BMP2 for 30 minutes, whole cell lysate

**Lane 3** : NIH/3T3 (mouse embryonic fibroblast) grown in serum-free media overnight, whole cell lysate

**Lane 4** : NIH/3T3 grown in serum-free media overnight, then treated with 50ng/ml BMP2 for 30 minutes, whole cell lysate

Lysates/proteins at 20 µg per lane.

## Secondary

**All lanes** : Goat Anti-Rabbit IgG H&L (HRP) (**ab97051**) at 1/100000 dilution

Developed using the ECL technique.

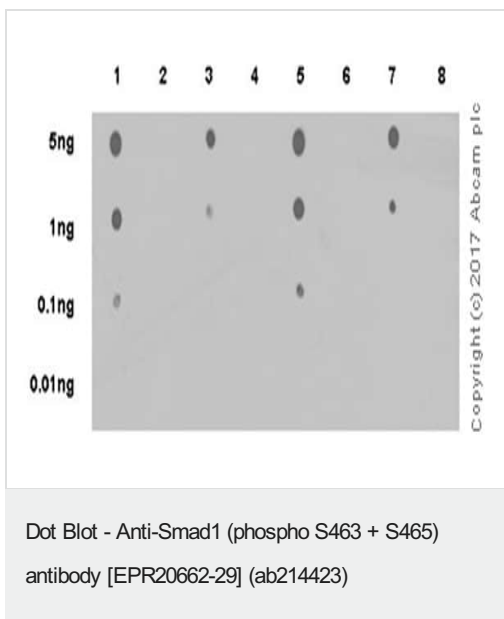
Performed under reducing conditions.

**Predicted band size:** 52 kDa

**Observed band size:** 60 kDa

**Exposure time:** 10 seconds

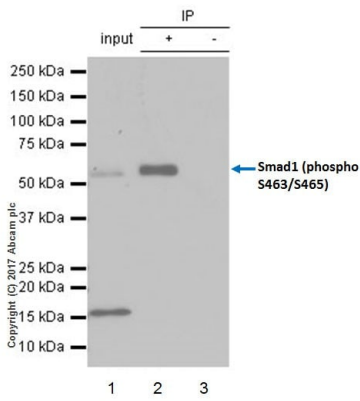
**Blocking/Dilution:** 5% NFDM/TBST.



Dot blot analysis of Smad1 (phospho S463/S465) peptide (Lane 1), Smad1 (phospho S463) peptide (Lane 2), Smad1 (phospho S465) peptide (Lane 3), Smad1 non-phospho peptide (Lane 4), Smad5 (phospho S463/S465) peptide (Lane 5), Smad5 (phospho S463) peptide (Lane 6), Smad5 (phospho S465) peptide (Lane 7) and Smad5 non-phospho peptide (Lane 8) using ab214423 at 1/1,000 dilution followed by Goat Anti-Rabbit IgG, (H+L), Peroxidase conjugated (**ab97051**) at 1/100,000 dilution.

Blocking and Diluting buffer and concentration: 5% NFDM /TBST.

Exposure time: 30 seconds.



Immunoprecipitation - Anti-Smad1 (phospho S463 + S465) antibody [EPR20662-29] (ab214423)

Smad1 (phospho S463/S465) was immunoprecipitated from 0.35 mg of NIH/3T3 (mouse embryo fibroblast cell line) whole cell lysate with ab214423 at 1/30 dilution. Western blot was performed from the immunoprecipitate using ab214423 at 1/500 dilution. VeriBlot for IP Detection Reagent (HRP) (**ab131366**), was used for detection at 1/1,000 dilution





**Lane 1:** NIH/3T3 (mouse embryonic fibroblast) grown in serum-free media overnight, then treated with 50 ng/ml BMP2 for 30 minutes, whole cell lysate 10 µg (Input).

**Lane 2:** ab214423 IP in NIH/3T3 grown in serum-free media overnight, then treated with 50 ng/ml BMP2 for 30 minutes, whole cell lysate.

**Lane 3:** Rabbit monoclonal IgG (**ab172730**) instead of ab214423 in NIH/3T3 grown in serum-free media overnight, then treated with 50 ng/ml BMP2 for 30 minutes, whole cell lysate

**Blocking and dilution buffer:** 5% NFD/MBST.

### Why choose a recombinant antibody?

 <b>Research with confidence</b> Consistent and reproducible results	 <b>Long-term and scalable supply</b> Recombinant technology
 <b>Success from the first experiment</b> Confirmed specificity	 <b>Ethical standards compliant</b> Animal-free production

Anti-Smad1 (phospho S463 + S465) antibody [EPR20662-29] (ab214423)

**Please note:** All products are "FOR RESEARCH USE ONLY. NOT FOR USE IN DIAGNOSTIC PROCEDURES"

### Our Abpromise to you: Quality guaranteed and expert technical support

- Replacement or refund for products not performing as stated on the datasheet
- Valid for 12 months from date of delivery
- Response to your inquiry within 24 hours
- We provide support in Chinese, English, French, German, Japanese and Spanish
- Extensive multi-media technical resources to help you
- We investigate all quality concerns to ensure our products perform to the highest standards

If the product does not perform as described on this datasheet, we will offer a refund or replacement. For full details of the Abpromise, please visit <https://www.abcam.co.jp/abpromise> or contact our technical team.

### **Terms and conditions**

---

- Guarantee only valid for products bought direct from Abcam or one of our authorized distributors