


Anti-SLD5 antibody [EPR9318] ab139683

リコンビナント **RabMAb**

4 References [画像数 3](#)

製品の概要

| | |
|--------------|---|
| 製品名 | Anti-SLD5 antibody [EPR9318] |
| 製品の詳細 | Rabbit monoclonal [EPR9318] to SLD5 |
| 由来種 | Rabbit |
| アプリケーション | 適用あり: Flow Cyt (Intra), WB 適用なし: ICC/IF or IHC-P |
| 種交差性 | 交差種: Rat, Human 交差が予測される動物種: Mouse  |
| 免疫原 | Synthetic peptide within Human SLD5 aa 1-100. The exact sequence is proprietary. |
| ポジティブ・コントロール | 293T cells; 293T, PC3, Jurkat and C6 cell lysates. |
| 特記事項 | <p>This product is a recombinant monoclonal antibody, which offers several advantages including:</p> <ul style="list-style-type: none"> - High batch-to-batch consistency and reproducibility - Improved sensitivity and specificity - Long-term security of supply - Animal-free production <p>For more information see here.</p> <p>Our RabMAb[®] technology is a patented hybridoma-based technology for making rabbit monoclonal antibodies. For details on our patents, please refer to RabMAb[®] patents.</p> |

製品の特性

| | |
|-------|--|
| 製品の状態 | Liquid |
| 保存方法 | Shipped at 4°C. Store at -20°C. |
| バッファー | pH: 7.2 Preservative: 0.01% Sodium azide Constituents: 9% PBS, 40% Glycerol (glycerin, glycerine), 0.05% BSA, 50% Tissue culture supernatant |
| 精製度 | Tissue culture supernatant |
| ポリ/モノ | モノクローナル |
| クローン名 | EPR9318 |

アイソタイプ

IgG

アプリケーション

The Abpromise guarantee **Abpromise保証は、** 次のテスト済みアプリケーションにおけるab139683の使用に適用されます
アプリケーションノートには、推奨の開始希釈率がありますが、適切な希釈率につきましてはご検討ください。

| アプリケーション | Abreviews | 特記事項 |
|------------------|-----------|--|
| Flow Cyt (Intra) | | 1/100 - 1/500. ab172730 - Rabbit monoclonal IgG, is suitable for use as an isotype control with this antibody. |
| WB | | 1/1000 - 1/10000. Predicted molecular weight: 26 kDa. |

追加情報

Is unsuitable for ICC/IF or IHC-P.

ターゲット情報

機能

The GINS complex plays an essential role in the initiation of DNA replication, and progression of DNA replication forks. GINS4 is important for GINS complex assembly. GINS complex seems to bind preferentially to single-stranded DNA.

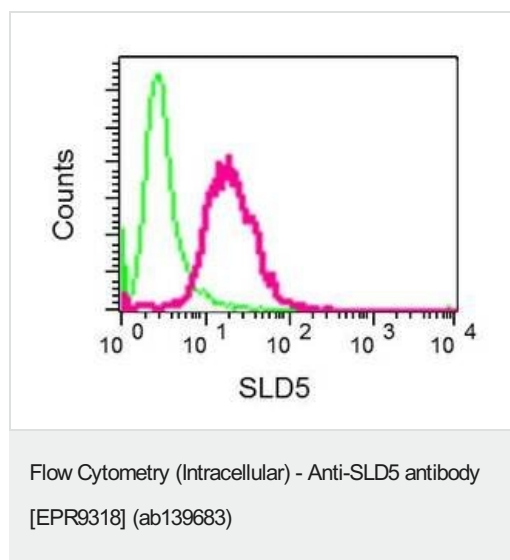
配列類似性

Belongs to the GINS4/SLD5 family.

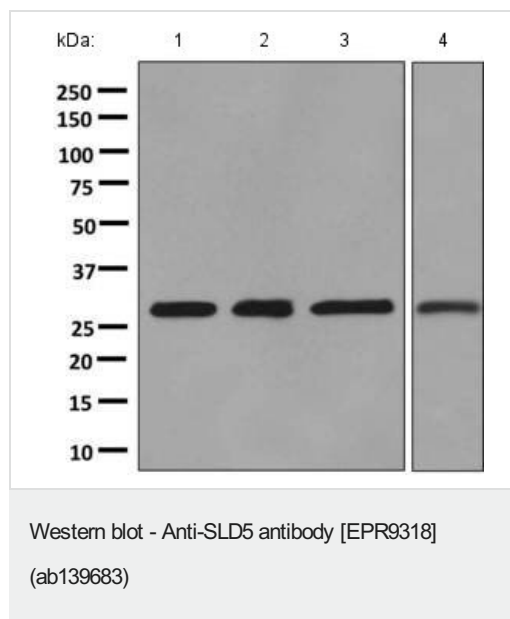
細胞内局在

Cytoplasm. Nucleus.

画像



Intracellular flow cytometric analysis of permeabilized 293T cells labeling SLD5 with ab139683 at 1/100 dilution (red). Rabbit IgG negative control (green).



All lanes : Anti-SLD5 antibody [EPR9318] (ab139683) at 1/1000 dilution

Lane 1 : 293T cell lysate

Lane 2 : PC3 cell lysate

Lane 3 : Jurkat cell lysate

Lane 4 : C6 cell lysate

Lysates/proteins at 10 µg per lane.

Secondary

All lanes : HRP labelled goat anti-rabbit at 1/2000 dilution

Predicted band size: 26 kDa

Why choose a recombinant antibody?

Research with confidence
Consistent and reproducible results

Long-term and scalable supply
Recombinant technology

Success from the first experiment
Confirmed specificity

Ethical standards compliant
Animal-free production

Anti-SLD5 antibody [EPR9318] (ab139683)

Please note: All products are "FOR RESEARCH USE ONLY. NOT FOR USE IN DIAGNOSTIC PROCEDURES"

Our Abpromise to you: Quality guaranteed and expert technical support

- Replacement or refund for products not performing as stated on the datasheet
- Valid for 12 months from date of delivery
- Response to your inquiry within 24 hours
- We provide support in Chinese, English, French, German, Japanese and Spanish
- Extensive multi-media technical resources to help you

- We investigate all quality concerns to ensure our products perform to the highest standards

If the product does not perform as described on this datasheet, we will offer a refund or replacement. For full details of the Abpromise, please visit <https://www.abcam.co.jp/abpromise> or contact our technical team.

Terms and conditions

- Guarantee only valid for products bought direct from Abcam or one of our authorized distributors