

Anti-SLC25A46/TB1 antibody ab237760

画像数 2

製品の概要

製品名	Anti-SLC25A46/TB1 antibody
製品の詳細	Rabbit polyclonal to SLC25A46/TB1
由来種	Rabbit
アプリケーション	適用あり: WB, ICC/IF
種交差性	交差種: Mouse, Human
免疫原	Recombinant fragment corresponding to Human SLC25A46/TB1 aa 1-102. Database link: Q96AG3
ポジティブ・コントロール	WB: Mouse brain tissue lysate; HeLa and Jurkat whole cell lysate (ab7899). ICC/IF: HeLa cells.
特記事項	<p>The Life Science industry has been in the grips of a reproducibility crisis for a number of years. Abcam is leading the way in addressing this with our range of recombinant monoclonal antibodies and knockout edited cell lines for gold-standard validation. Please check that this product meets your needs before purchasing.</p> <p>If you have any questions, special requirements or concerns, please send us an inquiry and/or contact our Support team ahead of purchase. Recommended alternatives for this product can be found below, along with publications, customer reviews and Q&As</p>

製品の特性

製品の状態	Liquid
保存方法	Shipped at 4°C. Store at +4°C short term (1-2 weeks). Upon delivery aliquot. Store at -20°C long term. Avoid freeze / thaw cycle.
バッファー	pH: 7.40 Preservative: 0.03% Proclin 300 Constituents: 50% Glycerol (glycerin, glycerine), PBS
精製度	Protein G purified
特記事項 (精製)	Purity greater than 95%.
ポリ/モノ	ポリクローナル
アイソタイプ	IgG

アプリケーション

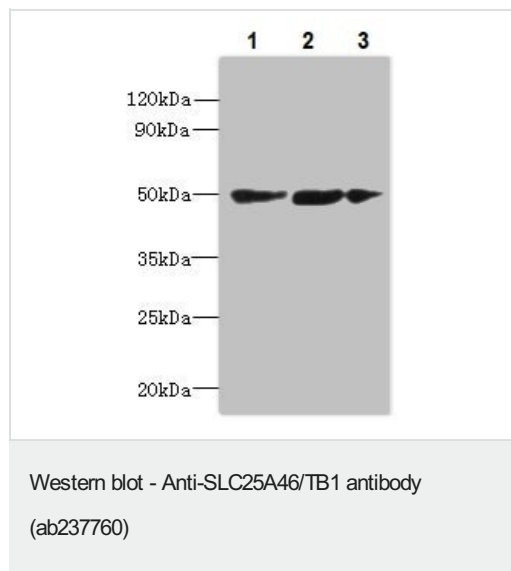
The Abpromise guarantee **Abpromise保証は、** 次のテスト済みアプリケーションにおけるab237760の使用に適用されます
アプリケーションノートには、推奨の開始希釈率がありますが、適切な希釈率につきましてはご検討ください。

アプリケーション	Abreviews	特記事項
WB		1/1000 - 1/5000. Predicted molecular weight: 46 kDa.
ICC/IF		1/50 - 1/200.

ターゲット情報

配列類似性	Belongs to the mitochondrial carrier family. Contains 2 Solcar repeats.
細胞内局在	Mitochondrion inner membrane.

画像



All lanes : Anti-SLC25A46/TB1 antibody (ab237760) at 1/1000 dilution

Lane 1 : Mouse brain tissue lysate

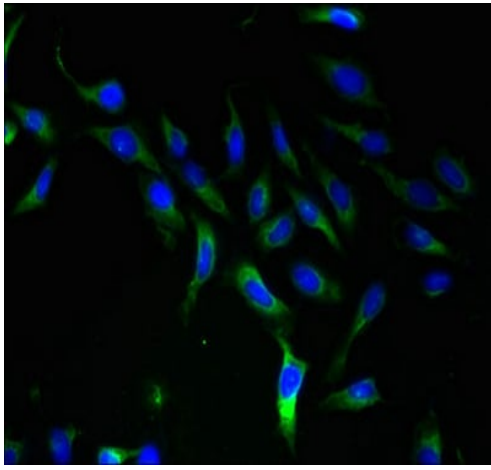
Lane 2 : HeLa (human epithelial cell line from cervix adenocarcinoma) whole cell lysate

Lane 3 : Jurkat (human T cell leukemia cell line from peripheral blood) whole cell lysate

Secondary

All lanes : Goat polyclonal to Rabbit IgG at 1/10000 dilution

Predicted band size: 46 kDa



Immunocytochemistry/ Immunofluorescence - Anti-SLC25A46/TB1 antibody (ab237760)

HeLa (human epithelial cell line from cervix adenocarcinoma) cells stained for SLC25A46/TB1 (green) using ab237760 at 1/100 dilution in ICC/IF, followed by Alexa Fluor 488[®] conjugated Goat Anti-Rabbit IgG (H+L).

Please note: All products are "FOR RESEARCH USE ONLY. NOT FOR USE IN DIAGNOSTIC PROCEDURES"

Our Abpromise to you: Quality guaranteed and expert technical support

- Replacement or refund for products not performing as stated on the datasheet
- Valid for 12 months from date of delivery
- Response to your inquiry within 24 hours
- We provide support in Chinese, English, French, German, Japanese and Spanish
- Extensive multi-media technical resources to help you
- We investigate all quality concerns to ensure our products perform to the highest standards

If the product does not perform as described on this datasheet, we will offer a refund or replacement. For full details of the Abpromise, please visit <https://www.abcam.co.jp/abpromise> or contact our technical team.

Terms and conditions

- Guarantee only valid for products bought direct from Abcam or one of our authorized distributors