


Anti-SLC25A13/Citrin antibody ab96303

★★★★★ [1 Abreviews](#) [1 References](#) [画像数 7](#)

製品の概要

製品名	Anti-SLC25A13/Citrin antibody
製品の詳細	Rabbit polyclonal to SLC25A13/Citrin
由来種	Rabbit
アプリケーション	適用あり: ICC/IF, IHC-P, WB
種交差性	交差種: Mouse, Rat, Human 交差が予測される動物種: Cow, Zebrafish 
免疫原	Recombinant fragment corresponding to Human SLC25A13/Citrin aa 248-505.
ポジティブ・コントロール	IHC-P: Mouse kidney tissue;N87 xenograft tissue. ICC/IF: HeLa cells. WB: Mouse liver lysate; rat liver lysate; HepG2, HEK-293T, A431 and HeLa whole cell extracts.
特記事項	<p>The Life Science industry has been in the grips of a reproducibility crisis for a number of years. Abcam is leading the way in addressing this with our range of recombinant monoclonal antibodies and knockout edited cell lines for gold-standard validation. Please check that this product meets your needs before purchasing.</p> <p>If you have any questions, special requirements or concerns, please send us an inquiry and/or contact our Support team ahead of purchase. Recommended alternatives for this product can be found below, along with publications, customer reviews and Q&As</p>

製品の特性

製品の状態	Liquid
保存方法	Shipped at 4°C. Upon delivery aliquot and store at -20°C or -80°C. Avoid repeated freeze / thaw cycles.
バッファー	pH: 7.00 Preservative: 0.025% Proclin 300 Constituents: 79% PBS, 20% Glycerol (glycerin, glycerine)
精製度	Immunogen affinity purified
ポリ/モノ	ポリクローナル
アイソタイプ	IgG

アプリケーション

The Abpromise guarantee

Abpromise保証は、次のテスト済みアプリケーションにおけるab96303の使用に適用されます

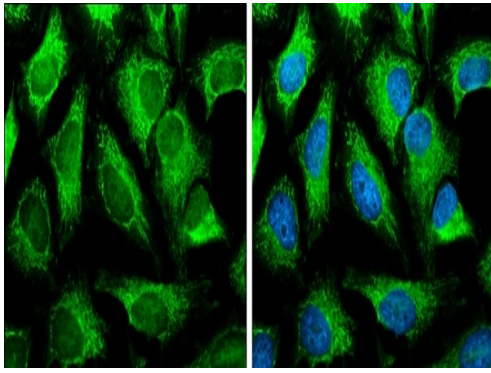
アプリケーションノートには、推奨の開始希釈率がありますが、適切な希釈率につきましてはご検討ください。

アプリケーション	Abreviews	特記事項
ICC/IF		1/100 - 1/1000.
IHC-P		1/100 - 1/1000.
WB	★★★★★ (1)	1/500 - 1/3000. Predicted molecular weight: 74 kDa.

ターゲット情報

機能	Catalyzes the calcium-dependent exchange of cytoplasmic glutamate with mitochondrial aspartate across the mitochondrial inner membrane. May have a function in the urea cycle.
組織特異性	High levels in liver and low levels in kidney, pancreas, placenta, heart and brain.
関連疾患	<p>Defects in SLC25A13 are the cause of citrullinemia type 2 (CTLN2) [MIM:603471]. Citrullinemia belongs to the urea cycle disorders. It is an autosomal recessive disease characterized primarily by elevated serum and urine citrulline levels. Ammonia intoxication is another manifestation. CTLN2 is characterized by neuropsychiatric symptoms including abnormal behaviors, loss of memory, seizures and coma. Death can result from brain edema. Onset is sudden and usually between the ages of 20 and 50 years.</p> <p>Defects in SLC25A13 are the cause of neonatal intrahepatic cholestasis due to citrin deficiency (NICCD) [MIM:605814]. NICCD is a form of citrullinemia type 2 with neonatal onset. NICCD is characterized by suppression of the bile flow, hepatic fibrosis, low birth weight, growth retardation, hypoproteinemia, variable liver dysfunction. NICCD is generally not severe and symptoms disappear by one year of age with an appropriate diet. Years or even decades later, however, some individuals develop the characteristic features of citrullinemia type 2 with neuropsychiatric symptoms.</p>
配列類似性	<p>Belongs to the mitochondrial carrier family.</p> <p>Contains 4 EF-hand domains.</p> <p>Contains 3 Solcar repeats.</p>
細胞内局在	Mitochondrion inner membrane.

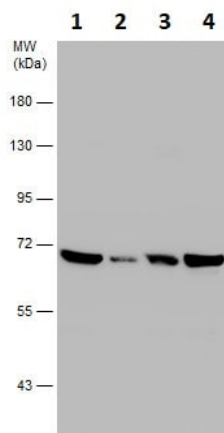
画像



Immunocytochemistry/ Immunofluorescence - Anti-SLC25A13/Citrin antibody (ab96303)

4% paraformaldehyde-fixed HeLa (human epithelial cell line from cervix adenocarcinoma) cells labeling SLC25A13/Citrin using ab96303 at 1/500 dilution (green) in ICC/IF.

The nuclear counter stain is Hoechst 33342 (blue).



Western blot - Anti-SLC25A13/Citrin antibody (ab96303)

All lanes : Anti-SLC25A13/Citrin antibody (ab96303) at 1/3000 dilution

Lane 1 : HEK-293T (human epithelial cell line from embryonic kidney transformed with large T antigen) whole cell extract

Lane 2 : A431 (human epidermoid carcinoma cell line) whole cell extract

Lane 3 : HeLa (human epithelial cell line from cervix adenocarcinoma) whole cell extract

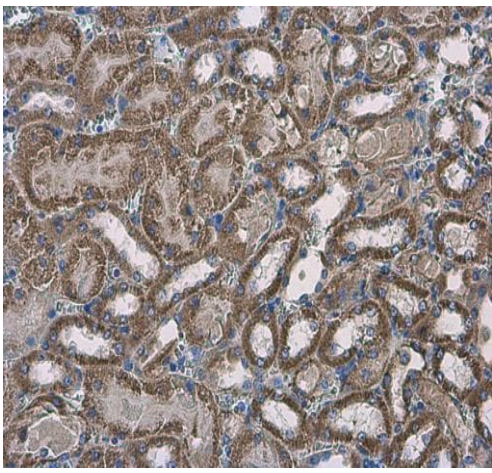
Lane 4 : HepG2 (human liver hepatocellular carcinoma cell line) whole cell extract

Lysates/proteins at 30 µg per lane.

Secondary

All lanes : HRP-conjugated anti-rabbit IgG

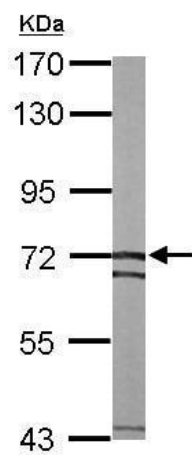
Predicted band size: 74 kDa



Immunohistochemistry (Formalin/PFA-fixed paraffin-embedded sections) - Anti-SLC25A13/Citrin antibody (ab96303)

Paraffin-embedded mouse kidney tissue labeling SLC25A13/Citrin using ab96303 at 1/500 dilution in immunohistochemical analysis.

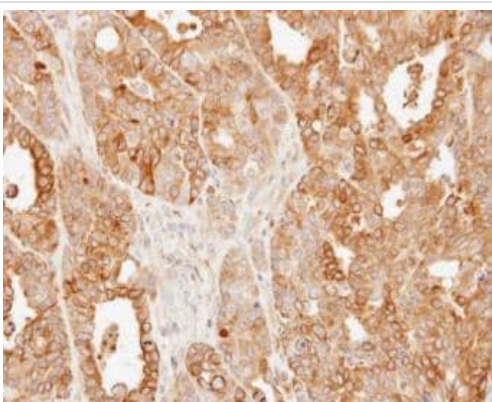
Antigen retrieval: Citrate buffer, pH 6.0, 15 min.



Western blot - Anti-SLC25A13/Citrin antibody (ab96303)

Anti-SLC25A13/Citrin antibody (ab96303) at 1/1000 dilution + Mouse liver lysate at 50 µg

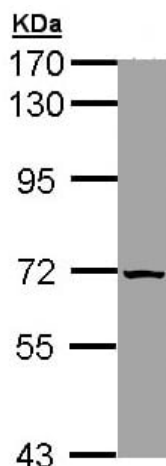
Predicted band size: 74 kDa



Immunohistochemistry (Formalin/PFA-fixed paraffin-embedded sections) - Anti-SLC25A13/Citrin antibody (ab96303)

Paraffin-embedded N87 xenograft tissue labeling SLC25A13/Citrin using ab96303 at 1/500 dilution in immunohistochemical analysis.

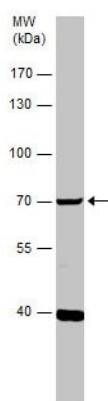
Antigen retrieval: EWDTA-based (pH 8.0), 15 minutes.



Western blot - Anti-SLC25A13/Citrin antibody
(ab96303)

Anti-SLC25A13/Citrin antibody (ab96303) at 1/1000 dilution +
293T whole cell lysate at 30 µg

Predicted band size: 74 kDa



Western blot - Anti-SLC25A13/Citrin antibody
(ab96303)

Anti-SLC25A13/Citrin antibody (ab96303) at 1/500 dilution + Rat
liver lysate at 50 µg

Secondary

HRP-conjugated anti-rabbit IgG

Predicted band size: 74 kDa

Please note: All products are "FOR RESEARCH USE ONLY. NOT FOR USE IN DIAGNOSTIC PROCEDURES"

Our Abpromise to you: Quality guaranteed and expert technical support

- Replacement or refund for products not performing as stated on the datasheet
- Valid for 12 months from date of delivery
- Response to your inquiry within 24 hours
- We provide support in Chinese, English, French, German, Japanese and Spanish
- Extensive multi-media technical resources to help you
- We investigate all quality concerns to ensure our products perform to the highest standards

If the product does not perform as described on this datasheet, we will offer a refund or replacement. For full details of the Abpromise, please visit <https://www.abcam.co.jp/abpromise> or contact our technical team.

Terms and conditions

- Guarantee only valid for products bought direct from Abcam or one of our authorized distributors