

### Anti-SLC25A12 antibody [EPR16294] ab200201

KO 評価済 リコンビナント RabMAb

★★★★★ [1 Abreviews](#) [2 References](#) [画像数 7](#)

#### 製品の概要

製品名	Anti-SLC25A12 antibody [EPR16294]
製品の詳細	Rabbit monoclonal [EPR16294] to SLC25A12
由来種	Rabbit
アプリケーション	<b>適用あり:</b> IP, WB
種交差性	<b>交差種:</b> Mouse, Rat, Human
免疫原	Synthetic peptide. This information is proprietary to Abcam and/or its suppliers.
ポジティブ・コントロール	WB: Human fetal heart and skeletal muscle lysates; HeLa, A431 C6, RAW 264.7, PC-12 and NIH/3T3 whole cell lysates; Mouse and rat brain, heart and kidney lysates. IP: Jurkat whole cell lysate.
特記事項	<p>This product is a recombinant monoclonal antibody, which offers several advantages including:</p> <ul style="list-style-type: none"> <li>- High batch-to-batch consistency and reproducibility</li> <li>- Improved sensitivity and specificity</li> <li>- Long-term security of supply</li> <li>- Animal-free production</li> </ul> <p>For more information <a href="#">see here</a>.</p> <p>Our RabMAb<sup>®</sup> technology is a patented hybridoma-based technology for making rabbit monoclonal antibodies. For details on our patents, please refer to <a href="#">RabMAb<sup>®</sup> patents</a>.</p>

#### 製品の特性

製品の状態	Liquid
保存方法	Shipped at 4°C. Store at +4°C short term (1-2 weeks). Upon delivery aliquot. Store at -20°C long term. Avoid freeze / thaw cycle.
バッファー	<p>pH: 7.2</p> <p>Preservative: 0.01% Sodium azide</p> <p>Constituents: 59% PBS, 40% Glycerol (glycerin, glycerine), 0.05% BSA</p>
精製度	Protein A purified
ポリ/モノ	モノクローナル
クローン名	EPR16294

## アプリケーション

## The Abpromise guarantee

**Abpromise保証は、**次のテスト済みアプリケーションにおけるab200201の使用に適用されます

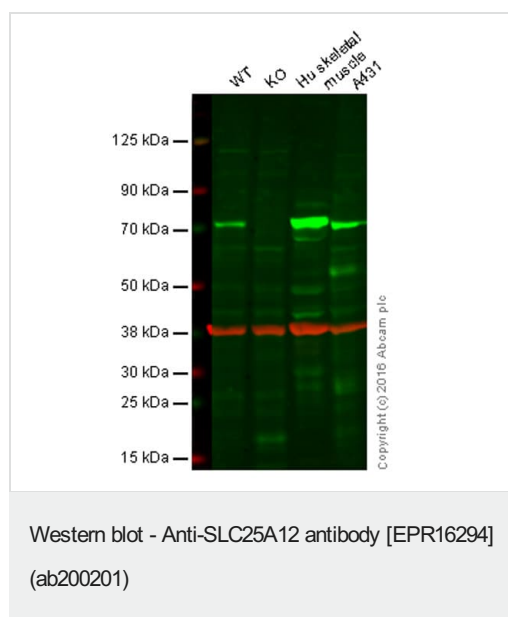
アプリケーションノートには、推奨の開始希釈率がありますが、適切な希釈率につきましてはご検討ください。

アプリケーション	Abreviews	特記事項
IP		1/40.
WB	★★★★★ (1)	1/1000. Detects a band of approximately 75 kDa (predicted molecular weight: 75 kDa).

## ターゲット情報

機能	Calcium-dependent mitochondrial aspartate and glutamate carrier. May have a function in the urea cycle.
組織特異性	High levels in heart and skeletal muscle, low in brain and very low in kidney.
関連疾患	Defects in SLC25A12 are the cause of aspartate-glutamate carrier 1 deficiency (AGC1D) [MIM:612949]; also called global cerebral hypomyelination. This syndrome consists of a child severe psychomotor retardation, hypotonia and hypomyelination of the central nervous system.
配列類似性	Belongs to the mitochondrial carrier family. Contains 4 EF-hand domains. Contains 3 Solcar repeats.
細胞内局在	Mitochondrion inner membrane.

## 画像



**Lane 1:** Wild-type HAP1 cell lysate (20 µg)

**Lane 2:** SLC25A12 knockout HAP1 cell lysate (20 µg)

**Lane 3:** Human skeletal muscle lysate (20 µg)

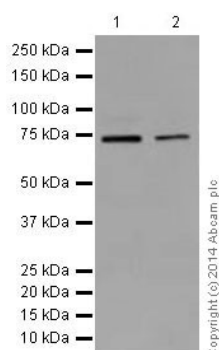
**Lane 4:** A431 cell lysate (20 µg)

**Lanes 1 - 4:** Merged signal (red and green). Green

- ab200201 observed at 72 kDa. Red - loading control, **ab8245**, observed at 37 kDa.

ab200201 was shown to recognize SLC25A12 when SLC25A12 knockout samples were used, along with additional cross-reactive bands. Wild-type and SLC25A12 knockout samples were subjected to SDS-PAGE. ab200201 and **ab8245** (loading control to GAPDH) were diluted to 1/1000 and 1/10000 respectively and incubated overnight at 4°C. Blots were developed with Goat anti-Rabbit IgG H&L (IRDye® 800CW) preadsorbed **ab216773**

and Goat anti-Mouse IgG H&L (IRDye® 680RD) preadsorbed **ab216776** secondary antibodies at 1/10000 dilution for 1 hour at room temperature before imaging.



Western blot - Anti-SLC25A12 antibody [EPR16294] (ab200201)

**All lanes :** Anti-SLC25A12 antibody [EPR16294] (ab200201) at 1/5000 dilution

**Lane 1 :** Human fetal heart lysate

**Lane 2 :** Human skeletal muscle lysate

Lysates/proteins at 20 µg per lane.

#### Secondary

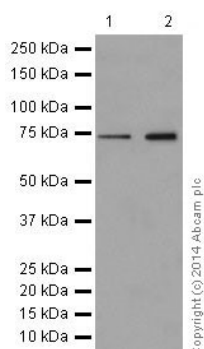
**All lanes :** Anti-Rabbit IgG (HRP), specific to the non-reduced form of IgG at 1/1000 dilution

**Predicted band size:** 75 kDa

**Observed band size:** 75 kDa

**Exposure time:** 10 seconds

Blocking/Dilution buffer: 5% NFDm/TBST.



Western blot - Anti-SLC25A12 antibody [EPR16294] (ab200201)

**All lanes :** Anti-SLC25A12 antibody [EPR16294] (ab200201) at 1/1000 dilution

**Lane 1 :** HeLa (Human epithelial cells from cervix adenocarcinoma) whole cell lysate

**Lane 2 :** A431 (Human epidermoid carcinoma) whole cell lysate

Lysates/proteins at 10 µg per lane.

#### Secondary

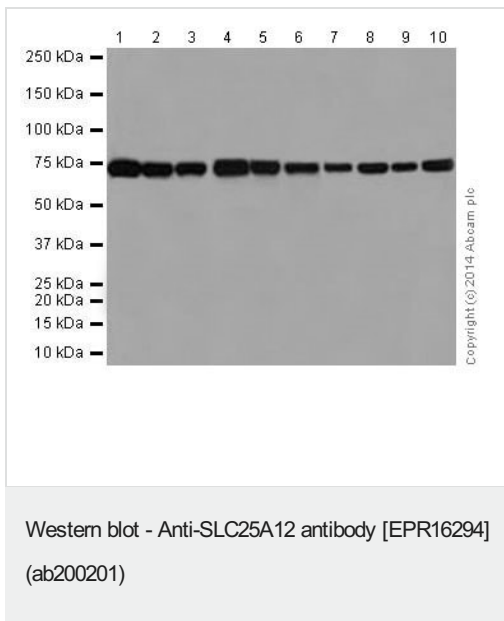
**All lanes :** Goat Anti-Rabbit IgG, (H+L), Peroxidase conjugated at 1/1000 dilution

**Predicted band size:** 75 kDa

**Observed band size:** 75 kDa

**Exposure time:** 3 minutes

Blocking/Dilution buffer: 5% NFDM/TBST.



**All lanes :** Anti-SLC25A12 antibody [EPR16294] (ab200201) at 1/1000 dilution

**Lane 1 :** Mouse brain lysate

**Lane 2 :** Mouse heart lysate

**Lane 3 :** Mouse kidney lysate

**Lane 4 :** Rat brain lysate

**Lane 5 :** Rat heart lysate

**Lane 6 :** Rat kidney lysate

**Lane 7 :** C6 (Rat glial tumor cells) whole cell lysate

**Lane 8 :** RAW 264.7 (Mouse macrophage cells transformed with Abelson murine leukemia virus) whole cell lysate

**Lane 9 :** PC-12 (Rat adrenal gland pheochromocytoma) whole cell lysate

**Lane 10 :** NIH/3T3 (Mouse embryo fibroblast cells) whole cell lysate

Lysates/proteins at 10 µg per lane.

### Secondary

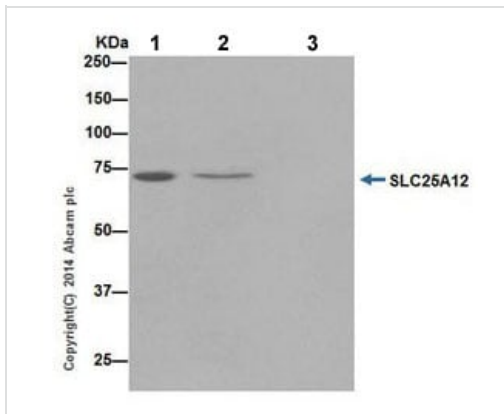
**All lanes :** Goat Anti-Rabbit IgG, (H+L), Peroxidase conjugated at 1/1000 dilution

**Predicted band size:** 75 kDa

**Observed band size:** 75 kDa

**Exposure time:** 15 seconds

Blocking/Dilution buffer: 5% NFDM/TBST.



Immunoprecipitation - Anti-SLC25A12 antibody  
[EPR16294] (ab200201)

SLC25A12 was immunoprecipitated from 1mg of Jurkat (Human T cell leukemia cells from peripheral blood) whole cell lysate with ab200201 at 1/40 dilution.

Western blot was performed from the immunoprecipitate using ab200201 at 1/1000 dilution.

Anti-Rabbit IgG (HRP), specific to the non-reduced form of IgG, was used as secondary antibody at 1/1500 dilution.

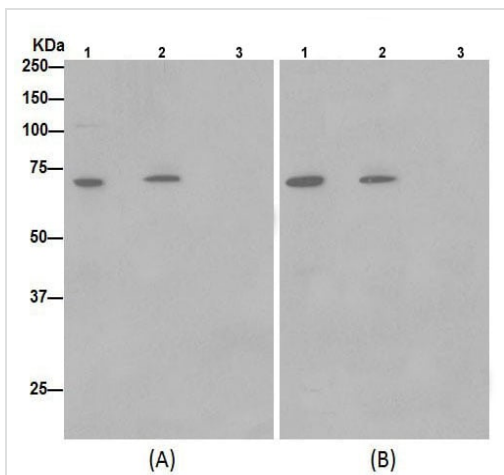
Lane 1: Jurkat whole cell lysate 10 µg (Input).

Lane 2: ab200201 IP in Jurkat whole cell lysate.

Lane 3: Rabbit monoclonal IgG (**ab172730**) instead of ab200201 in Jurkat whole cell lysate.

Blocking and dilution buffer and concentration: 5% NFDM/TBST.

Exposure time: 30 second.



Immunoprecipitation - Anti-SLC25A12 antibody  
[EPR16294] (ab200201)

SLC25A12 was immunoprecipitated from 1mg of Jurkat (Human T cell leukemia cells from peripheral blood) whole cell lysate with ab200201 at 1/40 dilution.

Western blot was performed from the immunoprecipitate using ab200201 at 1/1000 dilution (Panel A) or **ab192244** at 1/1000 dilution (Panel B).

Anti-Rabbit IgG (HRP), specific to the non-reduced form of IgG, was used as secondary antibody at 1/1500 dilution.

Lane 1: Jurkat whole cell lysate 10 µg (Input).

Lane 2: ab200201 IP in Jurkat whole cell lysate.

Lane 3: Rabbit monoclonal IgG (**ab172730**) instead of ab200201 in Jurkat whole cell lysate.

Blocking and dilution buffer and concentration: 5% NFDM/TBST.

Exposure time (Panel A and Panel B): 30 second.

### Why choose a recombinant antibody?



**Research with confidence**  
Consistent and reproducible results



**Long-term and scalable supply**  
Recombinant technology



**Success from the first experiment**  
Confirmed specificity



**Ethical standards compliant**  
Animal-free production

Anti-SLC25A12 antibody [EPR16294] (ab200201)

**Please note:** All products are "FOR RESEARCH USE ONLY. NOT FOR USE IN DIAGNOSTIC PROCEDURES"

### Our Abpromise to you: Quality guaranteed and expert technical support

---

- Replacement or refund for products not performing as stated on the datasheet
- Valid for 12 months from date of delivery
- Response to your inquiry within 24 hours
- We provide support in Chinese, English, French, German, Japanese and Spanish
- Extensive multi-media technical resources to help you
- We investigate all quality concerns to ensure our products perform to the highest standards

If the product does not perform as described on this datasheet, we will offer a refund or replacement. For full details of the Abpromise, please visit <https://www.abcam.co.jp/abpromise> or contact our technical team.

### Terms and conditions

---

- Guarantee only valid for products bought direct from Abcam or one of our authorized distributors