



Anti-SLC12A3 antibody ab95302

★★★★★ [1 Abreviews](#) [6 References](#) [画像数 2](#)

製品の概要

製品名	Anti-SLC12A3 antibody
製品の詳細	Rabbit polyclonal to SLC12A3
由来種	Rabbit
アプリケーション	適用あり: ICC/IF, WB
種交差性	交差種: Mouse, Rat, Human
免疫原	Synthetic peptide: PGEPRKVRPTLADLHSFLKQEG , corresponding to N terminal amino acids 74-95 of Rat SLC12A3 (NP_062218)  Run BLAST with  Run BLAST with
ポジティブ・コントロール	Rat kidney tissue lysate.
特記事項	<p>The Life Science industry has been in the grips of a reproducibility crisis for a number of years. Abcam is leading the way in addressing this with our range of recombinant monoclonal antibodies and knockout edited cell lines for gold-standard validation. Please check that this product meets your needs before purchasing.</p> <p>If you have any questions, special requirements or concerns, please send us an inquiry and/or contact our Support team ahead of purchase. Recommended alternatives for this product can be found below, along with publications, customer reviews and Q&As</p>

製品の特性

製品の状態	Liquid
保存方法	Shipped at 4°C. Store at -20°C. Stable for 12 months at -20°C.
バッファー	Preservative: 0.007% Sodium azide Constituents: 0.1% BSA, 50% Glycerol
精製度	Immunogen affinity purified
ポリ/モノ	ポリクローナル
アイソタイプ	IgG

アプリケーション

The Abpromise guarantee

Abpromise保証は、次のテスト済みアプリケーションにおけるab95302の使用に適用されます

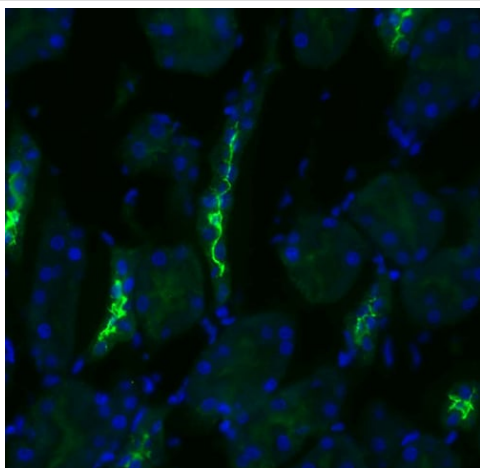
アプリケーションノートには、推奨の開始希釈率がありますが、適切な希釈率につきましてはご確認ください。

アプリケーション	Abreviews	特記事項
ICC/IF		1/200.
WB		1/1000. Detects a band of approximately 160 kDa (predicted molecular weight: 111 kDa).

ターゲット情報

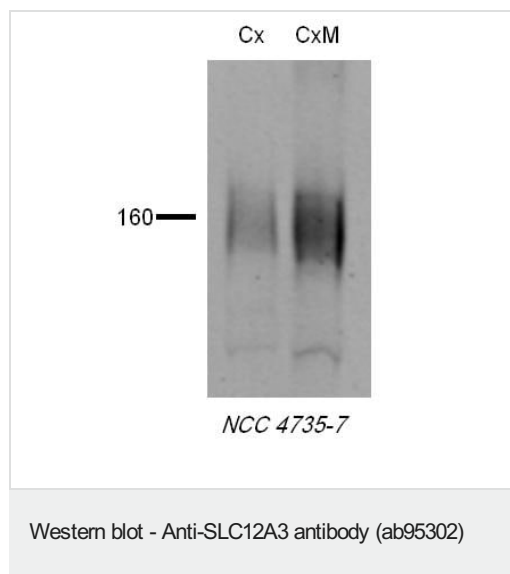
機能	Electrically silent transporter system. Mediates sodium and chloride reabsorption.
組織特異性	Predominant in kidney.
関連疾患	Defects in SLC12A3 are the cause of Gitelman syndrome (GS) [MIM:263800]. GS is an autosomal recessive disorder characterized by hypokalemic alkalosis in combination with hypomagnesemia, low urinary calcium, and increased renin activity associated with normal blood pressure. Patients are often asymptomatic or present transient periods of muscular weakness and tetany, usually accompanied by abdominal pain, vomiting and fever. The phenotype is highly heterogeneous in terms of age at onset and severity. Cardinal features such as hypocalciuria and hypomagnesemia might also change during the life cycle of a given patient. GS has overlapping features with Bartter syndrome.
配列類似性	Belongs to the SLC12A transporter family.
細胞内局在	Membrane.

画像



Immunofluorescent analysis of SLC12A3 in Rat kidney tissues using ab95302 at 1:200 dilution. DAPI merge.

Immunocytochemistry/ Immunofluorescence - Anti-SLC12A3 antibody (ab95302)



Western blot detection of SLC12A3 in Rat tissues using ab95302 at 1:1000 dilution.

Please note: All products are "FOR RESEARCH USE ONLY. NOT FOR USE IN DIAGNOSTIC PROCEDURES"

Our Abpromise to you: Quality guaranteed and expert technical support

- Replacement or refund for products not performing as stated on the datasheet
- Valid for 12 months from date of delivery
- Response to your inquiry within 24 hours
- We provide support in Chinese, English, French, German, Japanese and Spanish
- Extensive multi-media technical resources to help you
- We investigate all quality concerns to ensure our products perform to the highest standards

If the product does not perform as described on this datasheet, we will offer a refund or replacement. For full details of the Abpromise, please visit <https://www.abcam.co.jp/abpromise> or contact our technical team.

Terms and conditions

- Guarantee only valid for products bought direct from Abcam or one of our authorized distributors