

Anti-SLAMF6 antibody [EPR23122-130] ab243658

リコンビナント **RabMAb**

画像数 5

製品の概要

製品名	Anti-SLAMF6 antibody [EPR23122-130]
製品の詳細	Rabbit monoclonal [EPR23122-130] to SLAMF6
由来種	Rabbit
アプリケーション	適用あり: ICC/IF, Flow Cyt, IP 適用なし: IHC-P or WB
種交差性	交差種: Mouse
免疫原	Recombinant fragment. This information is proprietary to Abcam and/or its suppliers.
ポジティブ・コントロール	ICC/IF: EL4 and mouse splenocytes cells. Flow Cyt: Mouse splenocytes cells. IP: Mouse spleen lysate.
特記事項	This product is a recombinant monoclonal antibody, which offers several advantages including: <ul style="list-style-type: none"> - High batch-to-batch consistency and reproducibility - Improved sensitivity and specificity - Long-term security of supply - Animal-free production For more information see here . Our RabMAb [®] technology is a patented hybridoma-based technology for making rabbit monoclonal antibodies. For details on our patents, please refer to RabMAb[®] patents .

製品の特性

製品の状態	Liquid
保存方法	Shipped at 4°C. Store at +4°C short term (1-2 weeks). Upon delivery aliquot. Store at -20°C long term. Avoid freeze / thaw cycle.
バッファー	pH: 7.2 Preservative: 0.01% Sodium azide Constituents: PBS, 40% Glycerol (glycerin, glycerine), 0.05% BSA
精製度	Protein A purified
ポリ/モノ	モノクローナル
クローン名	EPR23122-130

アイソタイプIgG

アプリケーション

The Abpromise guarantee Abpromise保証は、 次のテスト済みアプリケーションにおけるab243658の使用に適用されます
アプリケーションノートには、推奨の開始希釈率がありますが、適切な希釈率につきましてはご検討ください。

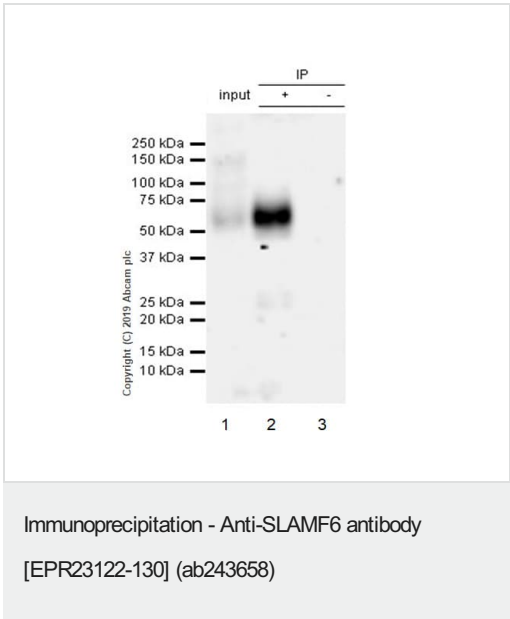
アプリケーション	Abreviews	特記事項
ICC/IF		1/50.
Flow Cyt		1/500.
IP		1/30.

追加情報Is unsuitable for IHC-P or WB.

ターゲット情報

機能	Triggers cytolytic activity only in natural killer cells (NK) expressing high surface densities of natural cytotoxicity receptors.
組織特異性	Expressed by all (resting and activated) natural killer cells (NK), T- and B-lymphocytes.
配列類似性	Contains 1 Ig-like (immunoglobulin-like) domain.
細胞内局在	Cell membrane.

画像

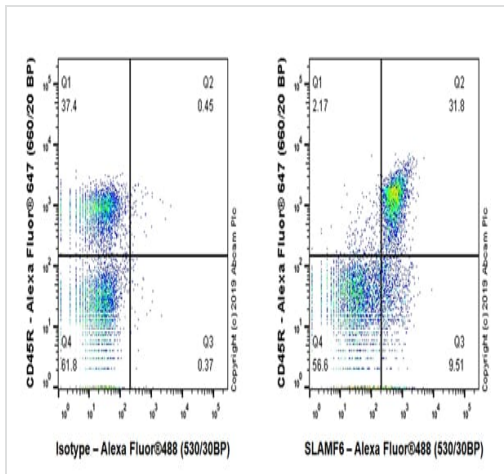


SLAMF6 was immunoprecipitated from 0.35 mg Mouse spleen lysate with ab243658 at 1/30 dilution (2µg in 0.35mg lysates). Western blot was performed on the immunoprecipitate using ab243658 at 1/500 dilution. VeriBlot for IP Detection Reagent (HRP) ([ab131366](#)) was used at 1/1000 dilution.

Lane 1: Mouse spleen lysate 10µg
Lane 2: ab243658 IP in Mouse spleen lysate
Lane 3: Rabbit monoclonal IgG ([ab172730](#)) instead of ab243658 in Mouse spleen lysate

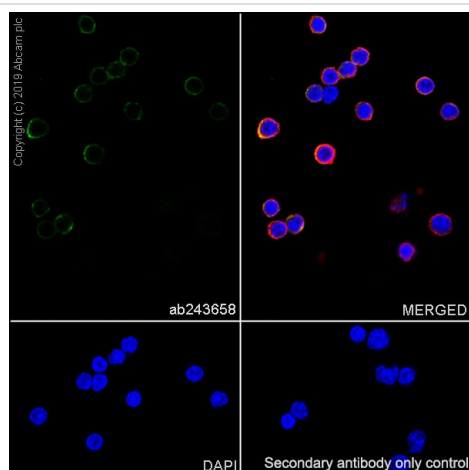
Blocking and dilution buffer and concentration: 5% NFDM/TBST.

Exposure time: 1 min



Flow Cytometry - Anti-SLAMF6 antibody
[EPR23122-130] (ab243658)

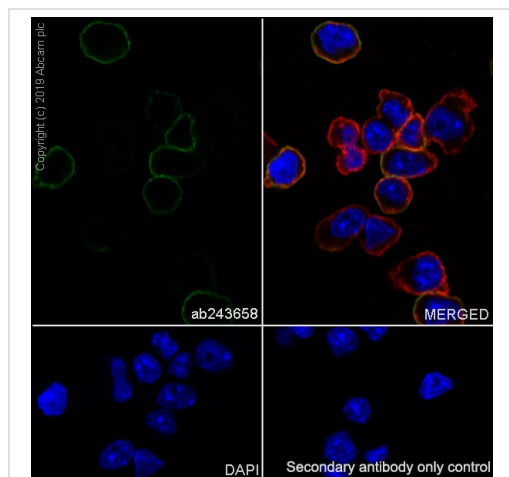
Flow cytometric analysis of Mouse splenocytes cells labelling SLAMF6 with ab243658 at 1/500 compared with a Rabbit monoclonal IgG (**ab172730**, Left) isotype control and an unlabelled control (cells without incubation with primary antibody and secondary antibody) (Blue). Goat anti rabbit IgG (Alexa Fluor® 488, **ab150077**) at 1/2000 was used as the secondary antibody.



Immunocytochemistry/ Immunofluorescence - Anti-SLAMF6 antibody [EPR23122-130] (ab243658)

Immunofluorescent analysis of 4% Paraformaldehyde-fixed, 0.1% TritonX-100 permeabilized mouse splenocytes cells labelling SLAMF6 with ab243658 at 1/50 dilution, followed by **ab150077** Alexa Fluor® 488 Goat anti-Rabbit secondary antibody at 1/1000 dilution (Green). Confocal image showing staining in some subsets of mouse splenocytes is observed. **ab195889** Anti-alpha Tubulin antibody [DM1A] - Microtubule Marker (Alexa Fluor® 594) was used to counterstain tubulin at 1/200 dilution (Red). The Nuclear counterstain was DAPI (Blue).

Secondary antibody only control: Secondary antibody is **ab150077** Alexa Fluor® 488 Goat anti-Rabbit secondary at 1/1000 dilution.







Immunocytochemistry/ Immunofluorescence - Anti-SLAMF6 antibody [EPR23122-130] (ab243658)

Immunofluorescent analysis of 4% Paraformaldehyde-fixed, 0.1% TritonX-100 permeabilized EL4 (mouse lymphoma T lymphocyte) cells labelling SLAMF6 with ab243658 at 1/50 dilution, followed by **ab150077** Alexa Fluor® 488 Goat anti-Rabbit secondary antibody at 1/1000 dilution (Green). Confocal image showing membranous staining in EL4 cells is observed. Ab195889 Anti-alpha Tubulin antibody [DM1A] - Microtubule Marker (Alexa Fluor® 594) was used to counterstain tubulin at 1/200 dilution (Red). The Nuclear counterstain was DAPI (Blue).

Secondary antibody only control: Secondary antibody is **ab150077** Alexa Fluor® 488 Goat anti-Rabbit secondary at 1/1000 dilution.

Why choose a recombinant antibody?

 <p>Research with confidence Consistent and reproducible results</p>	 <p>Long-term and scalable supply Recombinant technology</p>
 <p>Success from the first experiment Confirmed specificity</p>	 <p>Ethical standards compliant Animal-free production</p>

Anti-SLAMF6 antibody [EPR23122-130] (ab243658)

Please note: All products are "FOR RESEARCH USE ONLY. NOT FOR USE IN DIAGNOSTIC PROCEDURES"

Our Abpromise to you: Quality guaranteed and expert technical support

- Replacement or refund for products not performing as stated on the datasheet
- Valid for 12 months from date of delivery
- Response to your inquiry within 24 hours
- We provide support in Chinese, English, French, German, Japanese and Spanish
- Extensive multi-media technical resources to help you
- We investigate all quality concerns to ensure our products perform to the highest standards

If the product does not perform as described on this datasheet, we will offer a refund or replacement. For full details of the Abpromise, please visit <https://www.abcam.co.jp/abpromise> or contact our technical team.

Terms and conditions

- Guarantee only valid for products bought direct from Abcam or one of our authorized distributors