

Anti-SIGLEC11 antibody ab106390

画像数 3

製品の概要

製品名	Anti-SIGLEC11 antibody
製品の詳細	Rabbit polyclonal to SIGLEC11
由来種	Rabbit
特異性	Specific to Human SIGLEC11, does not cross react with SIGLEC10.
アプリケーション	適用あり: ICC/IF, WB, IHC-P
種交差性	交差種: Human
免疫原	18 amino acid peptide from near the carboxy terminus of Human SIGLEC11 (NP_443116).
ポジティブ・コントロール	HepG2 cell lysate Human liver tissue
特記事項	<p>The Life Science industry has been in the grips of a reproducibility crisis for a number of years. Abcam is leading the way in addressing this with our range of recombinant monoclonal antibodies and knockout edited cell lines for gold-standard validation. Please check that this product meets your needs before purchasing.</p> <p>If you have any questions, special requirements or concerns, please send us an inquiry and/or contact our Support team ahead of purchase. Recommended alternatives for this product can be found below, along with publications, customer reviews and Q&As</p>

製品の特性

製品の状態	Liquid
保存方法	Shipped at 4°C. Store at 4°C (stable for up to 12 months).
バッファー	<p>pH: 7.2</p> <p>Preservative: 0.02% Sodium azide</p> <p>Constituent: PBS</p>
精製度	Immunogen affinity purified
ポリ/モノ	ポリクローナル
アイソタイプ	IgG

アプリケーション

The Abpromise guarantee

Abpromise保証は、次のテスト済みアプリケーションにおけるab106390の使用に適用されます

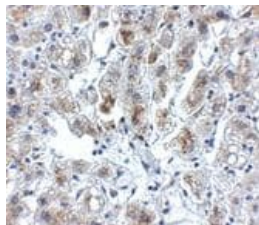
アプリケーションノートには、推奨の開始希釈率がありますが、適切な希釈率につきましてはご確認ください。

アプリケーション	Abreviews	特記事項
ICC/IF		Use a concentration of 20 µg/ml.
WB		Use a concentration of 0.5 - 1 µg/ml. Predicted molecular weight: 76 kDa.
IHC-P		Use a concentration of 5 µg/ml.

ターゲット情報

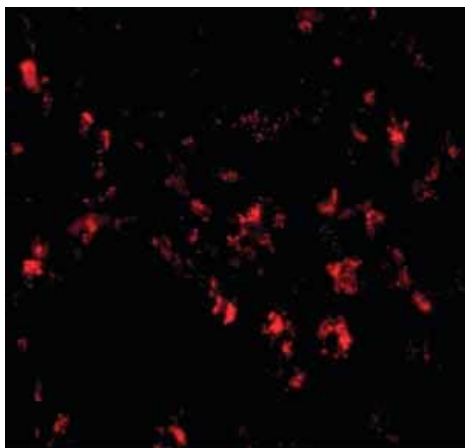
機能	Putative adhesion molecule that mediates sialic-acid dependent binding to cells. Preferentially binds to alpha-2,8-linked sialic acid. The sialic acid recognition site may be masked by cis interactions with sialic acids on the same cell surface. In the immune response, may act as an inhibitory receptor upon ligand induced tyrosine phosphorylation by recruiting cytoplasmic phosphatase(s) via their SH2 domain(s) that block signal transduction through dephosphorylation of signaling molecules.
組織特異性	Expressed by macrophages in various tissues including Kupffer cells. Also found in brain microglia.
配列類似性	Belongs to the immunoglobulin superfamily. SIGLEC (sialic acid binding Ig-like lectin) family. Contains 3 Ig-like C2-type (immunoglobulin-like) domains. Contains 1 Ig-like V-type (immunoglobulin-like) domain.
ドメイン	Contains 1 copy of a cytoplasmic motif that is referred to as the immunoreceptor tyrosine-based inhibitor motif (ITIM). This motif is involved in modulation of cellular responses. The phosphorylated ITIM motif can bind the SH2 domain of several SH2-containing phosphatases.
翻訳後修飾	Phosphorylated on tyrosine residues.
細胞内局在	Membrane.

画像



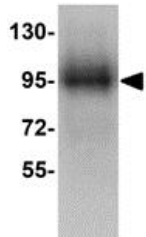
ab106390 at 5µg/ml, staining SIGLEC11 in Human liver, using Immunohistochemistry, Formalin/PFA-fixed paraffin-embedded tissue.

Immunohistochemistry (Formalin/PFA-fixed paraffin-embedded sections) - Anti-SIGLEC11 antibody (ab106390)



Immunofluorescence of SIGLEC11 in Human liver tissue with ab106390 at 20 ug/mL.

Immunocytochemistry/ Immunofluorescence - Anti-SIGLEC11 antibody (ab106390)



Anti-SIGLEC11 antibody (ab106390) at 1 µg/ml + HepG2 cell lysate at 15 µg

Predicted band size: 76 kDa

Western blot - Anti-SIGLEC11 antibody (ab106390)

Please note: All products are "FOR RESEARCH USE ONLY. NOT FOR USE IN DIAGNOSTIC PROCEDURES"

Our Abpromise to you: Quality guaranteed and expert technical support

- Replacement or refund for products not performing as stated on the datasheet
- Valid for 12 months from date of delivery
- Response to your inquiry within 24 hours
- We provide support in Chinese, English, French, German, Japanese and Spanish
- Extensive multi-media technical resources to help you
- We investigate all quality concerns to ensure our products perform to the highest standards

If the product does not perform as described on this datasheet, we will offer a refund or replacement. For full details of the Abpromise, please visit <https://www.abcam.co.jp/abpromise> or contact our technical team.

Terms and conditions

- Guarantee only valid for products bought direct from Abcam or one of our authorized distributors