

# Anti-Sialoadhesin/CD169 antibody [SP216] - BSA and Azide free ab245742

リコンビナント RabMAb

画像数 8

### 製品の概要

製品名	Anti-Sialoadhesin/CD169 antibody [SP216] - BSA and Azide free
製品の詳細	Rabbit monoclonal [SP216] to Sialoadhesin/CD169 - BSA and Azide free
由来種	Rabbit
アプリケーション	<b>適用あり:</b> Flow Cyt (Intra), IHC-P
種交差性	<b>交差種:</b> Human
免疫原	Synthetic peptide. This information is proprietary to Abcam and/or its suppliers.
ポジティブ・コントロール	IHC-P: Human bone marrow, HK lymphoma, squamous cell cervical carcinoma, squamous cell lung carcinoma, lung and lymph node tissue. Flow Cyt (intra): Human PBMC treated with 20ng/ml IFN-gamma for 24 hours cells
特記事項	ab245742 is the carrier-free version of <a href="#">ab183356</a> .

Our **carrier-free** antibodies are typically supplied in a PBS-only formulation, purified and free of BSA, sodium azide and glycerol. The carrier-free buffer and high concentration allow for increased conjugation efficiency.

This conjugation-ready format is designed for use with fluorochromes, metal isotopes, oligonucleotides, and enzymes, which makes them ideal for antibody labelling, functional and cell-based assays, flow-based assays (e.g. mass cytometry) and Multiplex Imaging applications.

Use our **conjugation kits** for antibody conjugates that are ready-to-use in as little as 20 minutes with <1 minute hands-on-time and 100% antibody recovery: available for fluorescent dyes, HRP, biotin and gold.

This product is compatible with the Maxpar<sup>®</sup> Antibody Labeling Kit from Fluidigm, without the need for antibody preparation. Maxpar<sup>®</sup> is a trademark of Fluidigm Canada Inc.

This product is a recombinant monoclonal antibody, which offers several advantages including:

- High batch-to-batch consistency and reproducibility
- Improved sensitivity and specificity
- Long-term security of supply
- Animal-free production

For more information [see here](#).

Our RabMAb<sup>®</sup> technology is a patented hybridoma-based technology for making rabbit monoclonal antibodies. For details on our patents, please refer to [RabMAb<sup>®</sup> patents](#).

This product is FOR RESEARCH USE ONLY. For commercial use, please contact [partnerships@abcam.com](mailto:partnerships@abcam.com).

## 製品の特性

製品の状態	Liquid
保存方法	Shipped at 4°C. Store at +4°C. Do Not Freeze.
バッファー	pH: 7.20 Constituent: PBS
キャリア・フリー	はい
精製度	Protein A/G purified
特記事項(精製)	Purified from TCS by protein A/G.
ポリ/モノ	モノクローナル
クローン名	SP216
アイソタイプ	IgG

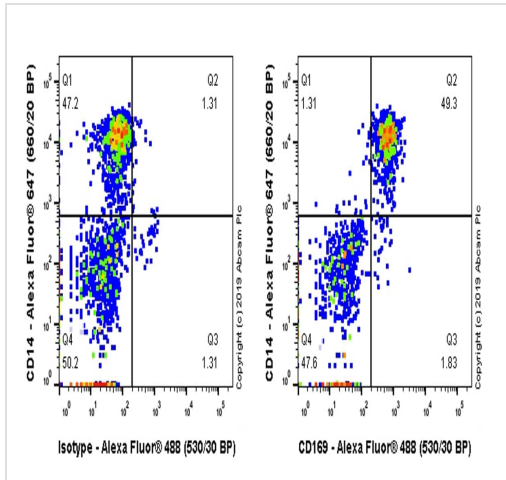
## アプリケーション

The Abpromise guarantee **Abpromise保証は、次のテスト済みアプリケーションにおけるab245742の使用に適用されず**  
アプリケーションノートには、推奨の開始希釈率がありますが、適切な希釈率につきましてはご検討ください。

アプリケーション	Abreviews	特記事項
Flow Cyt (Intra)		Use at an assay dependent concentration.
IHC-P		Use at an assay dependent concentration. Perform heat mediated antigen retrieval with citrate buffer pH 6 before commencing with IHC staining protocol.

## ターゲット情報

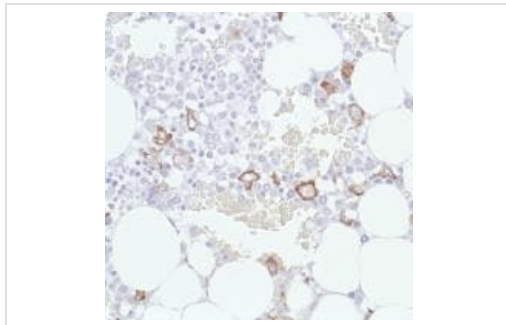
機能	Acts as an endocytic receptor mediating clathrin dependent endocytosis. Macrophage-restricted adhesion molecule that mediates sialic-acid dependent binding to lymphocytes, including granulocytes, monocytes, natural killer cells, B-cells and CD8 T-cells. Preferentially binds to alpha-2,3-linked sialic acid (By similarity). Binds to SPN/CD43 on T-cells (By similarity). May play a role in hemopoiesis.
組織特異性	Expressed by macrophages in various tissues. High levels are found in spleen, lymph node, perivascular macrophages in brain and lower levels in bone marrow, liver Kupffer cells and lamina propria of colon and lung. Also expressed by inflammatory macrophages in rheumatoid arthritis.
配列類似性	Belongs to the immunoglobulin superfamily. SIGLEC (sialic acid binding Ig-like lectin) family. Contains 16 Ig-like C2-type (immunoglobulin-like) domains. Contains 1 Ig-like V-type (immunoglobulin-like) domain.
細胞内局在	Secreted and Cell membrane.



Flow Cytometry (Intracellular) - Anti-Sialoadhesin/CD169 antibody [SP216] - BSA and Azide free (ab245742)

Intracellular Flow Cytometry analysis of Human PBMC treated with 20ng/ml IFN-gamma for 24 hours cells labeling Sialoadhesin/CD169 with purified **ab183356** at 1/20 dilution (47µg/ml) (red). Cells were fixed with 4% paraformaldehyde and permeabilised with 0.1% Tween-20. A Goat anti rabbit IgG (Alexa Fluor® 488, **ab150081**) secondary antibody was used at 1/2000 dilution. Isotype control - Rabbit monoclonal IgG (**ab172730**) / Black. Unlabeled control - Unlabelled cells / blue.

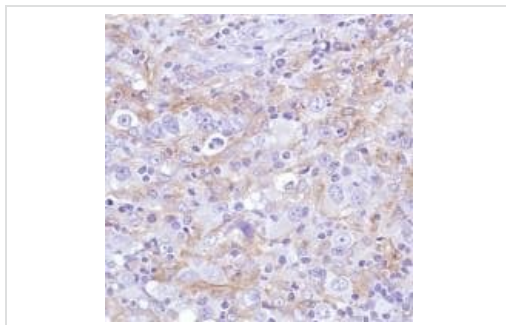
This data was developed using the same antibody clone in a different buffer formulation containing PBS, BSA, glycerol, and sodium azide (**ab183356**).



Immunohistochemistry (Formalin/PFA-fixed paraffin-embedded sections) - Anti-Sialoadhesin/CD169 antibody [SP216] - BSA and Azide free (ab245742)

Immunohistochemical analysis of formalin fixed, paraffin embedded human bone marrow tissue sections labeling Sialoadhesin/CD169 using **ab183356** at a 1/100 dilution.

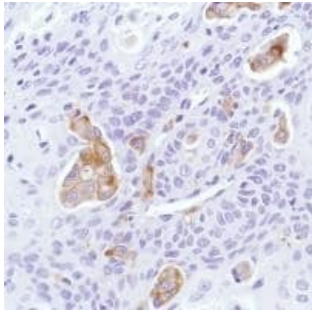
This data was developed using the same antibody clone in a different buffer formulation containing PBS, BSA and sodium azide (**ab183356**).



Immunohistochemistry (Formalin/PFA-fixed paraffin-embedded sections) - Anti-Sialoadhesin/CD169 antibody [SP216] - BSA and Azide free (ab245742)

Immunohistochemical analysis of formalin fixed, paraffin embedded human HK lymphoma tissue sections labeling Sialoadhesin/CD169 using **ab183356** at a 1/100 dilution.

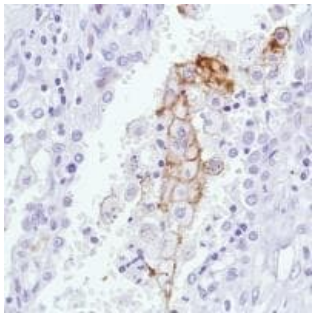
This data was developed using the same antibody clone in a different buffer formulation containing PBS, BSA and sodium azide (**ab183356**).



Immunohistochemistry (Formalin/PFA-fixed paraffin-embedded sections) - Anti-Sialoadhesin/CD169 antibody [SP216] - BSA and Azide free (ab245742)

Immunohistochemical analysis of formalin fixed, paraffin embedded human squamous cell cervical carcinoma tissue sections labeling Sialoadhesin/CD169 using [ab183356](#) at a 1/100 dilution.

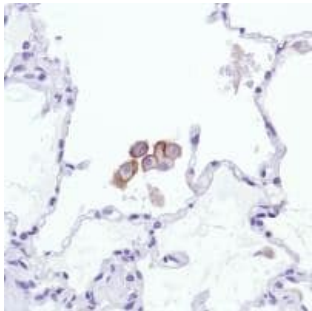
This data was developed using the same antibody clone in a different buffer formulation containing PBS, BSA and sodium azide ([ab183356](#)).



Immunohistochemistry (Formalin/PFA-fixed paraffin-embedded sections) - Anti-Sialoadhesin/CD169 antibody [SP216] - BSA and Azide free (ab245742)

Immunohistochemical analysis of formalin fixed, paraffin embedded human squamous cell lung carcinoma tissue sections labeling Sialoadhesin/CD169 using [ab183356](#) at a 1/100 dilution.

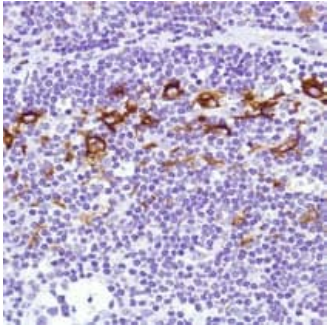
This data was developed using the same antibody clone in a different buffer formulation containing PBS, BSA and sodium azide ([ab183356](#)).



Immunohistochemistry (Formalin/PFA-fixed paraffin-embedded sections) - Anti-Sialoadhesin/CD169 antibody [SP216] - BSA and Azide free (ab245742)

Immunohistochemical analysis of formalin fixed, paraffin embedded human lung tissue sections labeling Sialoadhesin/CD169 using [ab183356](#) at a 1/100 dilution.

This data was developed using the same antibody clone in a different buffer formulation containing PBS, BSA and sodium azide ([ab183356](#)).

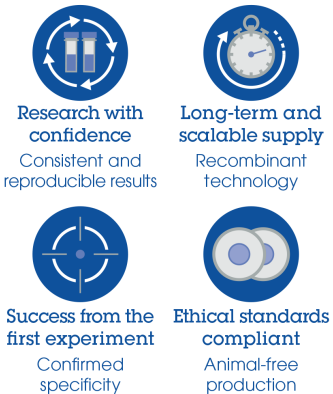


Immunohistochemical analysis of formalin fixed, paraffin embedded human lymph node tissue sections labeling Sialoadhesin/CD169 using **ab183356** at a 1/100 dilution.

This data was developed using the same antibody clone in a different buffer formulation containing PBS, BSA and sodium azide (**ab183356**).

Immunohistochemistry (Formalin/PFA-fixed paraffin-embedded sections) - Anti-Sialoadhesin/CD169 antibody [SP216] - BSA and Azide free (ab245742)

#### Why choose a recombinant antibody?



Anti-Sialoadhesin/CD169 antibody [SP216] - BSA and Azide free (ab245742)

**Please note:** All products are "FOR RESEARCH USE ONLY. NOT FOR USE IN DIAGNOSTIC PROCEDURES"

#### Our Abpromise to you: Quality guaranteed and expert technical support

- Replacement or refund for products not performing as stated on the datasheet
- Valid for 12 months from date of delivery
- Response to your inquiry within 24 hours
- We provide support in Chinese, English, French, German, Japanese and Spanish
- Extensive multi-media technical resources to help you

- We investigate all quality concerns to ensure our products perform to the highest standards

If the product does not perform as described on this datasheet, we will offer a refund or replacement. For full details of the Abpromise, please visit <https://www.abcam.co.jp/abpromise> or contact our technical team.

### **Terms and conditions**

---

- Guarantee only valid for products bought direct from Abcam or one of our authorized distributors