

Anti-Shugoshin antibody [3C11] ab58023

★★★★★ [6 Abreviews](#) [17 References](#) [画像数 2](#)

製品の概要

製品名	Anti-Shugoshin antibody [3C11]
製品の詳細	Mouse monoclonal [3C11] to Shugoshin
由来種	Mouse
アプリケーション	適用あり: WB, Flow Cyt
種交差性	交差種: Human, Recombinant fragment
免疫原	Recombinant full length protein, corresponding to amino acids 1-293 of Human Shugoshin
特記事項	<p>This product was changed from ascites to tissue culture supernatant on 17/04/2019. Please note that the dilutions may need to be adjusted accordingly. If you have any questions, please do not hesitate to contact our scientific support team.</p> <p>The Life Science industry has been in the grips of a reproducibility crisis for a number of years. Abcam is leading the way in addressing this with our range of recombinant monoclonal antibodies and knockout edited cell lines for gold-standard validation. Please check that this product meets your needs before purchasing.</p> <p>If you have any questions, special requirements or concerns, please send us an inquiry and/or contact our Support team ahead of purchase. Recommended alternatives for this product can be found below, along with publications, customer reviews and Q&As</p>

製品の特性

製品の状態	Liquid
保存方法	Shipped at 4°C. Upon delivery aliquot and store at -20°C or -80°C. Avoid repeated freeze / thaw cycles.
バッファー	pH: 7.4
精製度	Tissue culture supernatant
ポリ/モノ	モノクローナル
クローン名	3C11
アイソタイプ	IgG2a
軽鎖の種類	kappa

The Abpromise guarantee Abpromise保証は、 次のテスト済みアプリケーションにおけるab58023の使用に適用されます
アプリケーションノートには、推奨の開始希釈率がありますが、適切な希釈率につきましてはご確認ください。

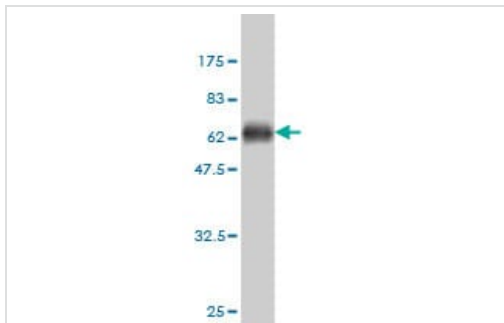
アプリケーション	Abreviews	特記事項
WB	★★★★☆ (2)	Use at an assay dependent concentration. This antibody has only been tested in WB against the recombinant fragment used as immunogen. We have no data on the detection of endogenous protein.
Flow Cyt		Use at an assay dependent concentration. ab170191 - Mouse monoclonal IgG2a, is suitable for use as an isotype control with this antibody.

ターゲット情報

機能	Plays a central role in chromosome cohesion during mitosis by preventing premature dissociation of cohesin complex from centromeres after prophase, when most of cohesin complex dissociates from chromosomes arms. May act by preventing phosphorylation of the STAG2 subunit of cohesin complex at the centromere, ensuring cohesin persistence at centromere until cohesin cleavage by ESPL1/separase at anaphase. Essential for proper chromosome segregation during mitosis and this function requires interaction with PPP2R1A. Its phosphorylated form is necessary for chromosome congression and for the proper attachment of spindle microtubule to the kinetochore. Necessary for kinetochore localization of PLK1 and CENPF. May play a role in the tension sensing mechanism of the spindle-assembly checkpoint by regulating PLK1 kinetochore affinity. Isoform 3 plays a role in maintaining centriole cohesion involved in controlling spindle pole integrity.
組織特異性	Widely expressed. Highly expressed in testis. Expressed in lung, small intestine, breast, liver and placenta. Strongly overexpressed in 90% of breast cancers tested.
配列類似性	Belongs to the shugoshin family.
発生段階	Appears in prophase cells and remains present until metaphase. Strongly decreases at the onset of anaphase and completely disappears at telophase. Not present in interphase cells (at protein level).
ドメイン	The KEN box and D-box 3 are required for its ubiquitination and degradation.
翻訳後修飾	Ubiquitinated and degraded during mitotic exit by APC/C-Cdh1. Phosphorylation by NEK2 is essential for chromosome congression in mitosis and for the proper attachment of spindle microtubule to the kinetochore. Phosphorylated by PLK1 and AUKRB.
細胞内局在	Nucleus. Chromosome > centromere. Chromosome > centromere > kinetochore. Cytoplasm > cytoskeleton > spindle pole. Cytoplasm > cytoskeleton > centrosome. Localizes to the inner centromere throughout prophase until metaphase and disappears at anaphase. During prometaphase, it localizes to a single focus, while at metaphase, it localizes to 2 spots corresponding to the 2 centromeres. Centromeric localization requires the presence of BUB1 and the interaction with PPP2R1A. Localizes to the inner kinetochore from prophase to early metaphase. Co-localizes with NEK2 and SS18L1 at the kinetochore. Phosphorylation by AUKRB and the presence of BUB1 are required for localization to the kinetochore. Isoform 1 primarily localizes to kinetochores during G2 phase and mitotic prophase, metaphase, and anaphase and does not appear to be associated with kinetochores during late mitosis. Isoform 3 is found at the

centrosome in interphase and at spindle poles in mitosis and its spindle pole localization is PLK1 dependent. Isoform 3 does not localize to kinetochores during any stages of the cell cycle.

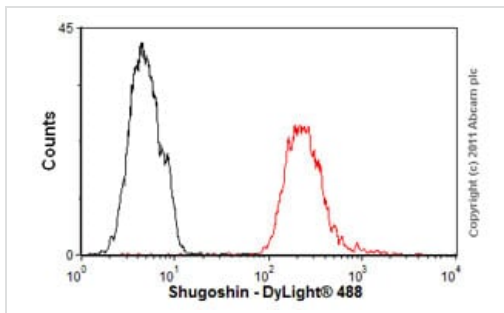
画像



Western blot - Anti-Shugoshin antibody [3C11]
(ab58023)

Western blot against tagged recombinant protein immunogen using ab58023 Shugoshin antibody at 1ug/ml. Predicted band size of immunogen is 58 kDa.

This image was generated using the ascites version of the product.



Flow Cytometry - Anti-Shugoshin antibody [3C11]
(ab58023)

Overlay histogram showing MCF-7 cells stained with ab58023 (red line). The cells were fixed with 80% methanol (5 min) and then permeabilized with 0.1% PBS-Tween for 20 min. The cells were then incubated in 1x PBS / 10% normal goat serum / 0.3M glycine to block non-specific protein-protein interactions followed by the antibody (ab58023, 0.5µg/1x10⁶ cells) for 30 min at 22°C. The secondary antibody used was DyLight® 488 goat anti-mouse IgG (H+L) ([ab96879](#)) at 1/500 dilution for 30 min at 22°C. Isotype control antibody (black line) was mouse IgG2a [ICIGG2A] ([ab91361](#), 1µg/1x10⁶ cells) used under the same conditions.

Acquisition of >5,000 events was performed. This antibody gave a positive signal in MCF-7 cells fixed with 4% paraformaldehyde (10 min)/permeabilized with 0.1% PBS-Tween for 20 min used under the same conditions.

This image was generated using the ascites version of the product.

Please note: All products are "FOR RESEARCH USE ONLY. NOT FOR USE IN DIAGNOSTIC PROCEDURES"

Our Abpromise to you: Quality guaranteed and expert technical support

- Replacement or refund for products not performing as stated on the datasheet
- Valid for 12 months from date of delivery
- Response to your inquiry within 24 hours
- We provide support in Chinese, English, French, German, Japanese and Spanish
- Extensive multi-media technical resources to help you

- We investigate all quality concerns to ensure our products perform to the highest standards

If the product does not perform as described on this datasheet, we will offer a refund or replacement. For full details of the Abpromise, please visit <https://www.abcam.co.jp/abpromise> or contact our technical team.

Terms and conditions

- Guarantee only valid for products bought direct from Abcam or one of our authorized distributors