

Anti-SHP2 antibody ab131541

★★★★★ [1 Abreviews](#) [9 References](#) [画像数 3](#)

製品の概要

製品名	Anti-SHP2 antibody
製品の詳細	Rabbit polyclonal to SHP2
由来種	Rabbit
アプリケーション	適用あり: WB, IHC-P, ICC/IF
種交差性	交差種: Mouse, Human
免疫原	Synthetic peptide conjugated to KLH, derived from around amino acids 540-544 (H-E-Y-T-N) of Human SHP2 (NP_002825.3). Run BLAST with Run BLAST with
ポジティブ・コントロール	HeLa cells; 3T3 cell extract; Human breast carcinoma tissue
特記事項	<p>The Life Science industry has been in the grips of a reproducibility crisis for a number of years. Abcam is leading the way in addressing this with our range of recombinant monoclonal antibodies and knockout edited cell lines for gold-standard validation. Please check that this product meets your needs before purchasing.</p> <p>If you have any questions, special requirements or concerns, please send us an inquiry and/or contact our Support team ahead of purchase. Recommended alternatives for this product can be found below, along with publications, customer reviews and Q&As</p>

製品の特性

製品の状態	Liquid
保存方法	Shipped at 4°C. Store at -20°C. Stable for 12 months at -20°C.
バッファー	<p>pH: 7.40</p> <p>Preservative: 0.02% Sodium azide</p> <p>Constituents: 0.88% Sodium chloride, 49% PBS, 50% Glycerol (glycerin, glycerine)</p> <p>PBS without Mg²⁺ and Ca²⁺</p>
精製度	Immunogen affinity purified
ポリ/モノ	ポリクローナル
アイソタイプ	IgG

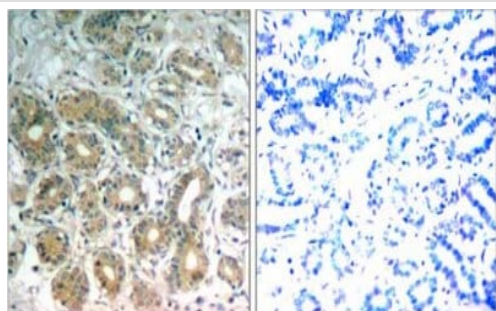
アプリケーション

The Abpromise guarantee **Abpromise保証は、次のテスト済みアプリケーションにおけるab131541の使用に適用されます**
アプリケーションノートには、推奨の開始希釈率がありますが、適切な希釈率につきましてはご検討ください。

アプリケーション	Abreviews	特記事項
WB		1/500 - 1/1000. Predicted molecular weight: 68 kDa.
IHC-P		1/50 - 1/100.
ICC/IF		1/100 - 1/200.

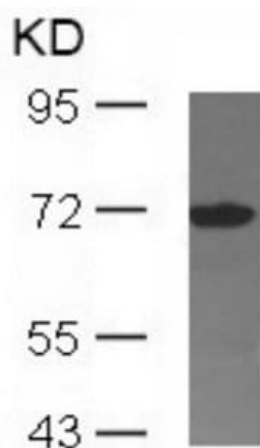
ターゲット情報

機能	Acts downstream of various receptor and cytoplasmic protein tyrosine kinases to participate in the signal transduction from the cell surface to the nucleus.
組織特異性	Widely expressed, with highest levels in heart, brain, and skeletal muscle.
関連疾患	<p>Defects in PTPN11 are the cause of LEOPARD syndrome type 1 (LEOPARD1) [MIM:151100]. It is an autosomal dominant disorder allelic with Noonan syndrome. The acronym LEOPARD stands for lentigines, electrocardiographic conduction abnormalities, ocular hypertelorism, pulmonic stenosis, abnormalities of genitalia, retardation of growth, and deafness.</p> <p>Defects in PTPN11 are the cause of Noonan syndrome type 1 (NS1) [MIM:163950]. Noonan syndrome (NS) is a disorder characterized by dysmorphic facial features, short stature, hypertelorism, cardiac anomalies, deafness, motor delay, and a bleeding diathesis. Some patients with Noonan syndrome type 1 develop multiple giant cell lesions of the jaw or other bony or soft tissues, which are classified as pigmented villomoduolar synovitis (PVNS) when occurring in the jaw or joints. Note=Mutations in PTPN11 account for more than 50% of the cases. Rarely, NS is associated with juvenile myelomonocytic leukemia (JMML). NS1 inheritance is autosomal dominant.</p> <p>Defects in PTPN11 are a cause of juvenile myelomonocytic leukemia (JMML) [MIM:607785]. JMML is a pediatric myelodysplastic syndrome that constitutes approximately 30% of childhood cases of myelodysplastic syndrome (MDS) and 2% of leukemia. It is characterized by leukocytosis with tissue infiltration and in vitro hypersensitivity of myeloid progenitors to granulocyte-macrophage colony stimulating factor.</p> <p>Defects in PTPN11 are a cause of metachondromatosis (MC) [MIM:156250]. It is a skeletal disorder with radiologic fetarures of both multiple exostoses and Ollier disease, characterized by the presence of multiple enchondromas and osteochondroma-like lesions.</p>
配列類似性	<p>Belongs to the protein-tyrosine phosphatase family. Non-receptor class 2 subfamily.</p> <p>Contains 2 SH2 domains.</p> <p>Contains 1 tyrosine-protein phosphatase domain.</p>
ドメイン	The SH2 domains repress phosphatase activity. Binding of these domains to phosphotyrosine-containing proteins relieves this auto-inhibition, possibly by inducing a conformational change in the enzyme.
翻訳後修飾	Phosphorylated on Tyr-546 and Tyr-584 upon receptor protein tyrosine kinase activation; which creates a binding site for GRB2 and other SH2-containing proteins.
細胞内局在	Cytoplasm.



Immunohistochemical analysis of paraffin-embedded Human breast carcinoma tissue labelling SHP2 with ab131541 at 1/50 dilution. Right panel was preincubated with blocking peptide.

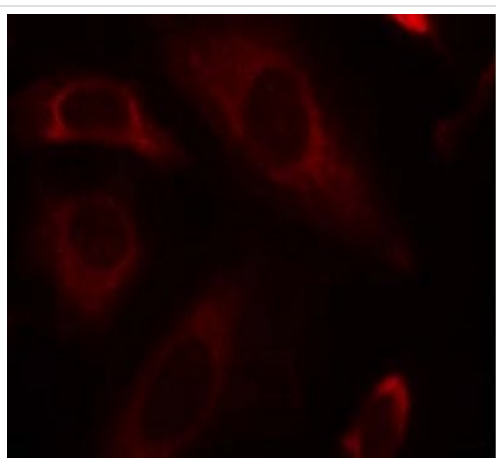
Immunohistochemistry (Formalin/PFA-fixed paraffin-embedded sections) - Anti-SHP2 antibody (ab131541)



Anti-SHP2 antibody (ab131541) at 1/500 dilution + 3T3 cell extract

Predicted band size: 68 kDa

Western blot - Anti-SHP2 antibody (ab131541)



Immunofluorescence analysis of methanol-fixed HeLa cells labelling SHP2 with ab131541 at 1/100 dilution.

Immunocytochemistry/ Immunofluorescence - Anti-SHP2 antibody (ab131541)

Please note: All products are "FOR RESEARCH USE ONLY. NOT FOR USE IN DIAGNOSTIC PROCEDURES"

Our Abpromise to you: Quality guaranteed and expert technical support

- Replacement or refund for products not performing as stated on the datasheet
- Valid for 12 months from date of delivery
- Response to your inquiry within 24 hours
- We provide support in Chinese, English, French, German, Japanese and Spanish
- Extensive multi-media technical resources to help you
- We investigate all quality concerns to ensure our products perform to the highest standards

If the product does not perform as described on this datasheet, we will offer a refund or replacement. For full details of the Abpromise, please visit <https://www.abcam.co.jp/abpromise> or contact our technical team.

Terms and conditions

- Guarantee only valid for products bought direct from Abcam or one of our authorized distributors